

WAREHOUSE FOR SUBLEASE

33375-33377 CROATIAN WAY | UNION CITY, CA

PRICE REDUCED!!



WAREHOUSE FOR SUBLEASE

33375-33377 CROATIAN WAY | UNION CITY, CA



LISTING DATA:

- 6,268± RSF
- 70% Warehouse
- Newer Improvements
- 17' Clear Height
- 2 Grade Level Doors
- Sprinklered
- 9 Parking Spaces, Plus Plenty of Street Parking
- Asking Price: ~~\$1.40/SF, I.G.~~ **\$1.25/SF, I.G.**
- LED: 8/31/2026

EXCLUSIVE AGENTS:

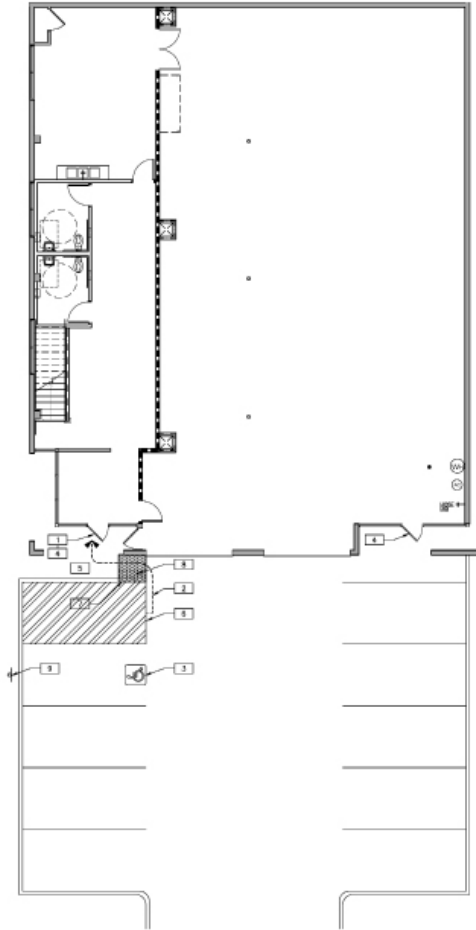
DAVID K. SCARPINATO
Principal
dscarpinato@lee-associates.com
510.907.3022 | LIC# 01812743

PATRICK O'BRIEN
Principal
pobrien@lee-associates.com
510.907.3023 | LIC# 02086133

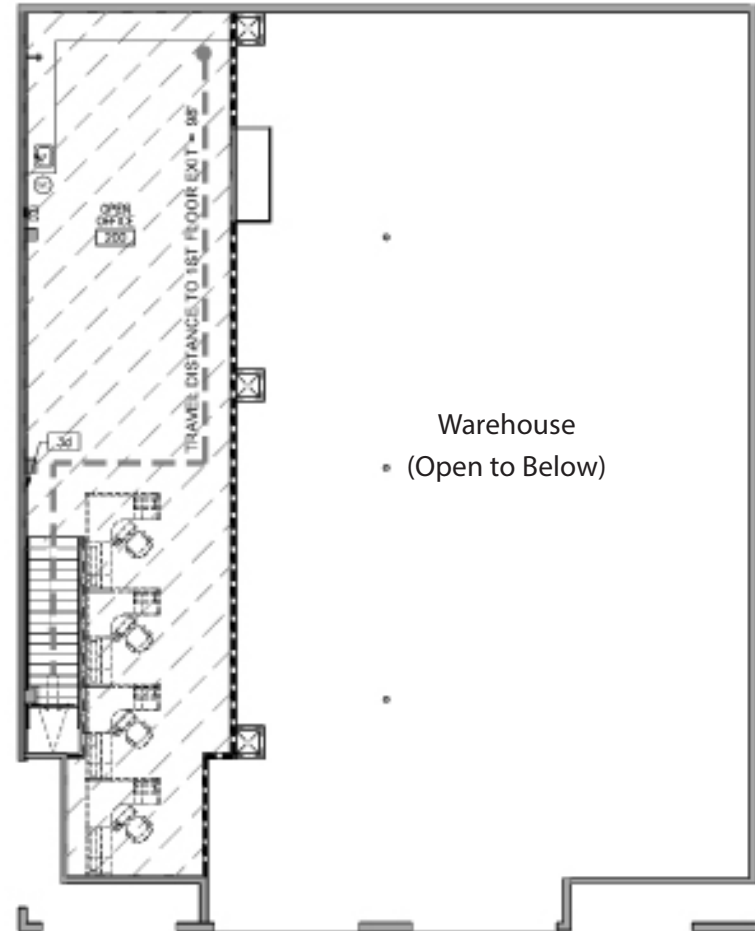
WAREHOUSE FOR SUBLEASE

33375-33377 CROATIAN WAY | UNION CITY, CA

FIRST FLOOR



MEZZANINE OFFICE



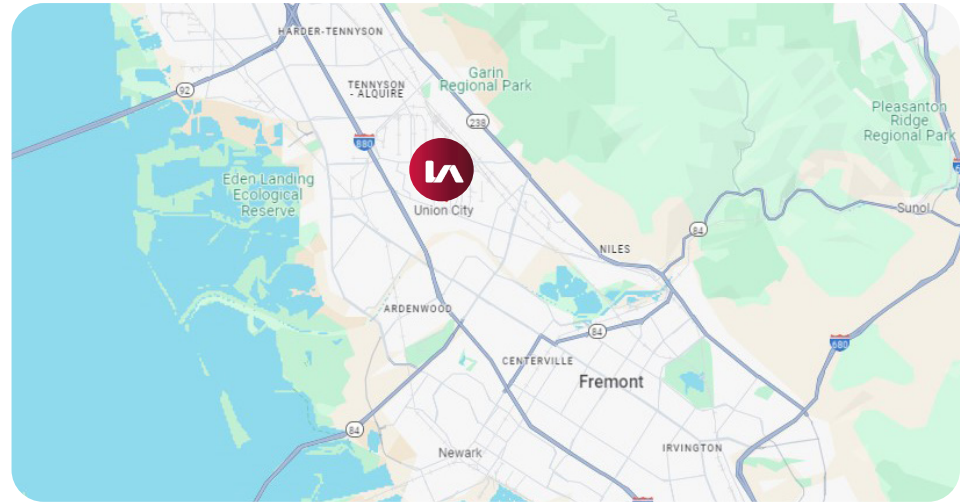
EXCLUSIVE AGENTS:

DAVID K. SCARPINATO
Principal
dscarpinato@lee-associates.com
510.907.3022 | LIC# 01812743

PATRICK O'BRIEN
Principal
pobrien@lee-associates.com
510.907.3023 | LIC# 02086133

WAREHOUSE FOR SUBLEASE

33375-33377 CROATIAN WAY | UNION CITY, CA



EXCLUSIVE AGENTS:

DAVID K. SCARPINATO
Principal
dscarpinato@lee-associates.com
510.907.3022 | LIC# 01812743

PATRICK O'BRIEN
Principal
pobrien@lee-associates.com
510.907.3023 | LIC# 02086133

555 12th Street, Suite 1725, Oakland, CA 94607 | 510-903-7600 | lee-associates.com



All information furnished regarding property for sale, rental or financing is from sources deemed reliable, but no warranty or representation is made to the accuracy thereof and same is submitted to errors, omissions, change of price, rental or other conditions prior to sale, lease or financing or withdrawal without notice. No liability of any kind is to be imposed on the broker herein.