



Office/Industrial Space for Lease

Paul Bickford

Vice President
+1 952 897 7732
paul.bickford@colliers.com

Rob Brass

Vice President
+1 952 897 7757
rob.brass@colliers.com

Andrew Odney

Senior Vice President
+1 952 897 7709
andrew.odney@colliers.com

1600 Utica Avenue S Ste 300
St. Louis Park, MN 55416
P: +1 952 897 7700
colliers.com

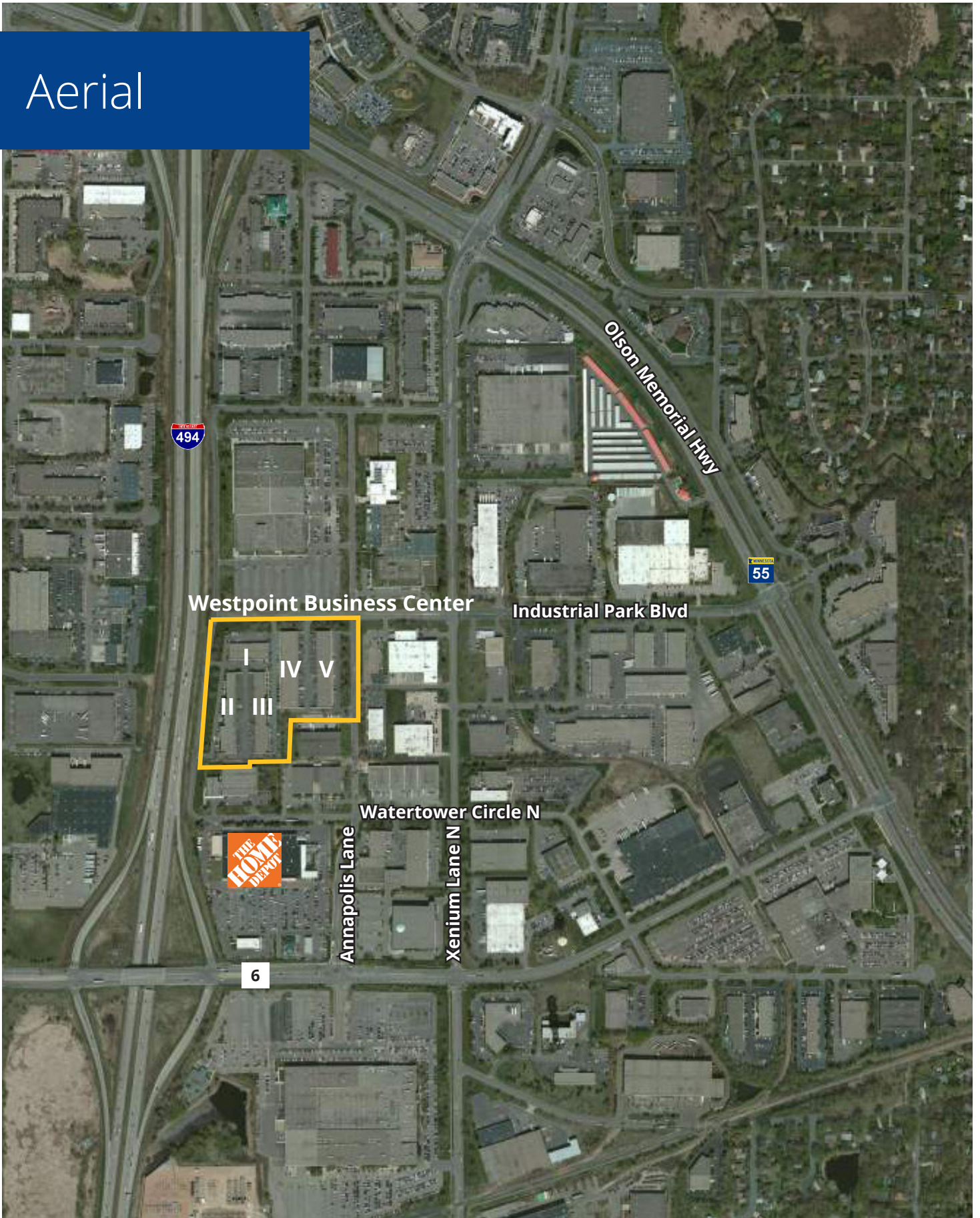
Westpoint Business Center Bldg I 13895 Industrial Park Blvd, Plymouth

Building Amenities

- > Five (5) building development totaling 162,000 SF
- > Great access and visibility to I-494
- > Near many amenities
- > 14' clear height
- > Flexible bay sizes
- > Locally owned and managed

Copyright © 2024 Colliers International. Information herein has been obtained from sources deemed reliable, however its accuracy cannot be guaranteed. The user is required to conduct their own due diligence and verification.

Aerial



Westpoint Business Center Bldg I

13895 Industrial Park Blvd | Plymouth, MN 55441



Property Address:

13895 Industrial Park Blvd
Plymouth, MN 55441

**Currently Available:
Suite 140**

4,242 SF office

Year Built:

1978

Clear Height:

8'

Zoning:

I-2 General Industrial

Building Square Feet:

17,062 SF total

Net Rental Rates:

\$7.50 PSF

2024 Est. CAM & RE Tax:

\$5.54 PSF CAM

\$2.58 PSF RE taxes

\$8.12 PSF total

Amenities:

- Five (5) building development totaling 162,000 SF
- Great access and visibility to I-494
- Near many area amenities
- Flexible bay sizes
- Locally owned and managed

FOR LEASING INFORMATION, CONTACT:

Paul Bickford

952 897 7732

paul.bickford@colliers.com

Rob Brass

952 897 7757

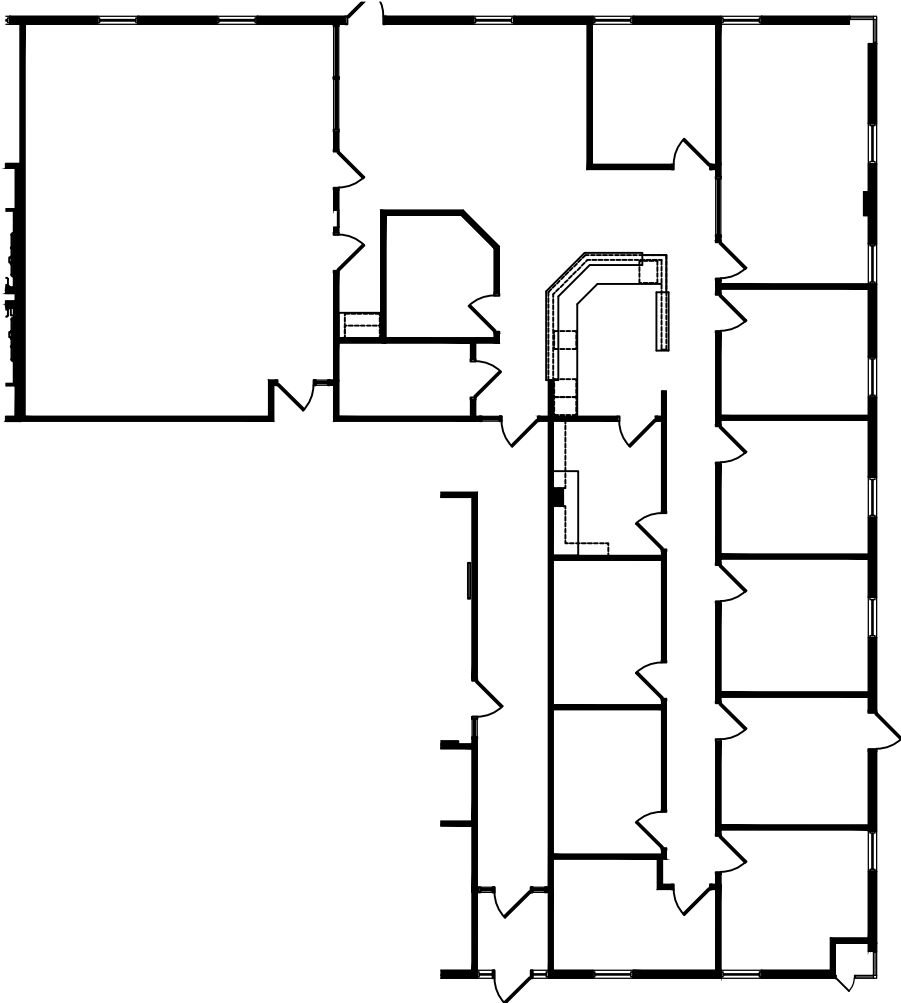
rob.brass@colliers.com

Andrew Odney

952 897 7709

andrew.odney@colliers.com

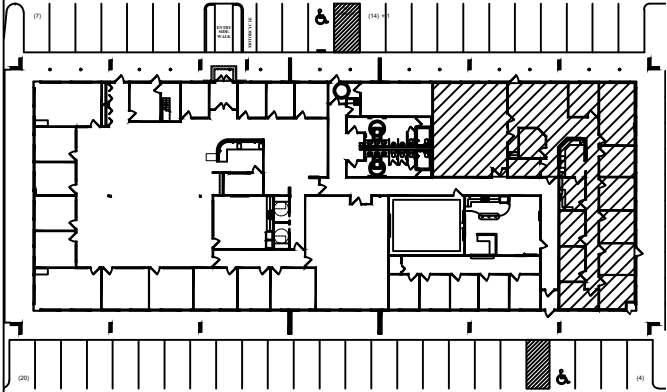
Colliers International | Minneapolis-St. Paul
1600 Utica Ave S Ste 300, St. Louis Park, MN 55416
www.colliers.com



Floor Plan

Scale: 1/16"=1'-0"
4,242 s.f.

Building Key Plan



Westpoint Business Center I

**13895 Industrial Park Blvd., Suite 140
Plymouth, MN 55441**



1600 Utica Avenue South, Suite 300
St. Louis Park, MN 55416



Leasing Contacts:
Rob Brass: (952) 897-7757
Paul Bickford: (952) 897-7732
Andrew Odney: (952) 897-7709

Aerial

