



## 152 Franklin St

152 Franklin St, New York, NY 10013

NYC  
**RESIDENCE**  
.com



**Terrence Oved**

NYC Residence

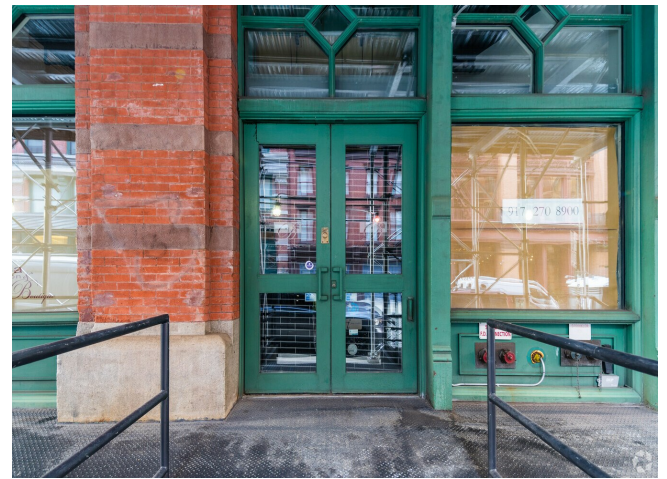
401 Greenwich St, New York, NY 10013

[terry@nycresidence.com](mailto:terry@nycresidence.com)

(917) 270-8900

# 152 Franklin St

\$74.12 /SF/YR

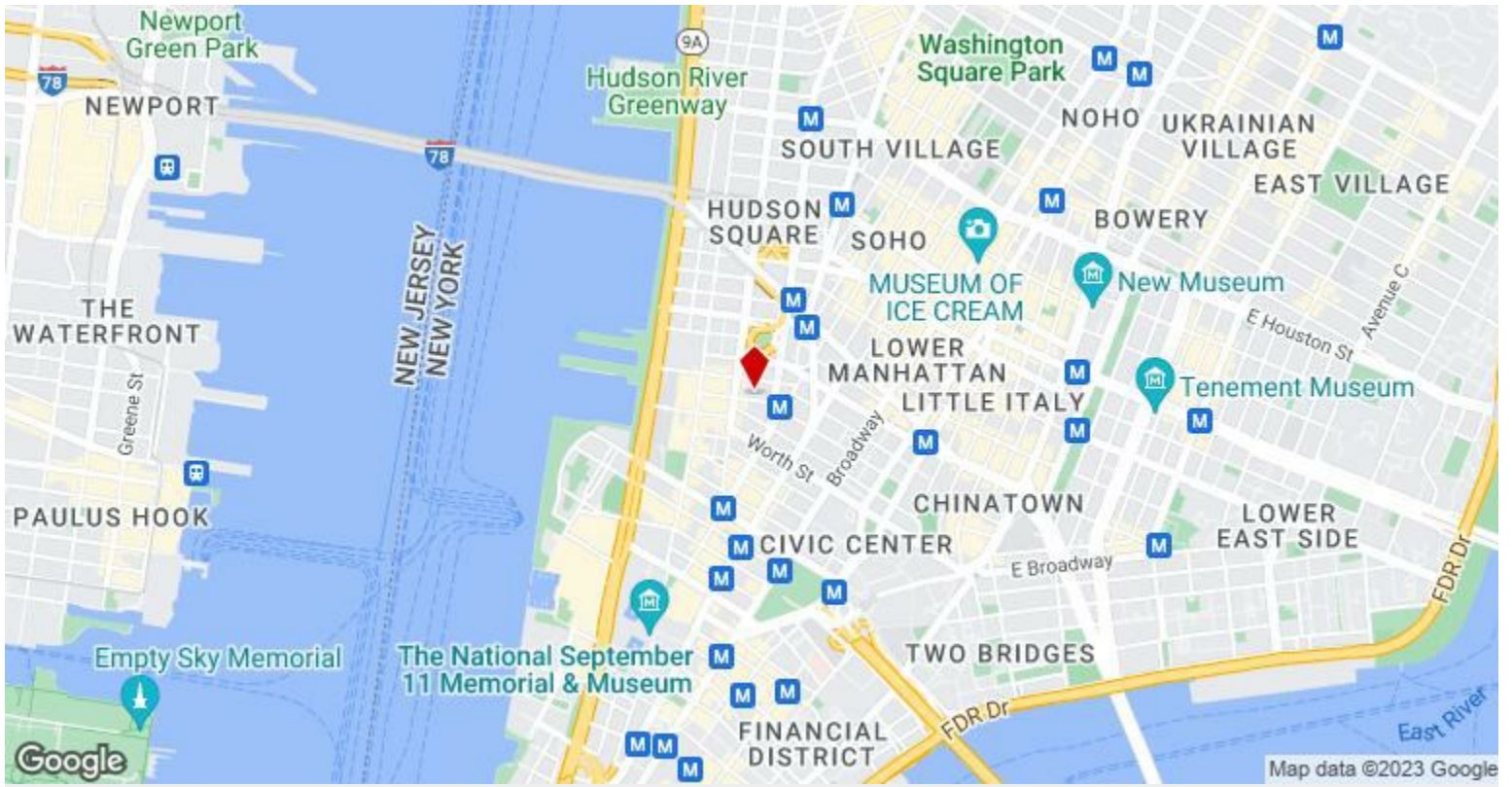


Rental Rate:	\$74.12 /SF/YR
Property Type:	Multifamily
Property Subtype:	Apartment
Apartment Style:	Mid Rise
Year Built:	1910
Walk Score ®:	100 (Walker's Paradise)
Transit Score ®:	100 (Rider's Paradise)
Rental Rate Mo:	\$6.18 /SF/MO

## Ground

Space Available	6,475 SF
Rental Rate	\$74.12 /SF/YR
Date Available	Now
Service Type	Modified Gross
Space Type	Relet
Space Use	Retail
Lease Term	1 - 10 Years

Located on historic cobblestone Franklin Street, between Varick and Hudson Streets in prime Tribeca, 152 Franklin Street was designed by the prolific architectural firm of John B. Snook & Sons. Completed in 1891, the seven-story loft structure was built in the Romanesque Revival style. The handsome façade showcases two six-story arches with cast iron framed openings. Pastene & Co.'s prominent lettering above the entrance earned the building the unofficial name of The Pastene Building. This commercial space is approximately 6,500 square feet evenly distributed between the upper and lower portions which are easily and integrated and accessed via internal steel staircase. The space is bright, open, large, airy and lofty and feature a private, custom designed restroom on each floor. The space has an ultra-high end look and feel while remaining true to its storied history befitting a high end brand seeking a prestigious, notable, large, open space with a creative, TriBeCa vibe. Perfect use for galleries, high end retailers or personal service providers or creative agency and office. The lower level is located on street level and is large, clean, windowed and completely open. Both floors are beautiful, large, airy, windowed and spectacular. Large 14-16' ceilings give the space a loft like dimension allowing for tremendous convenience, comfort and flexibility of use. There is also a freight elevator that directly services the lower level making it easy to receive and ship heavier items. It is conveniently situated a block or so from most major subway lines and steps away from CitiBank's Global Corporate Headquarters. Asking \$39,995/Month.

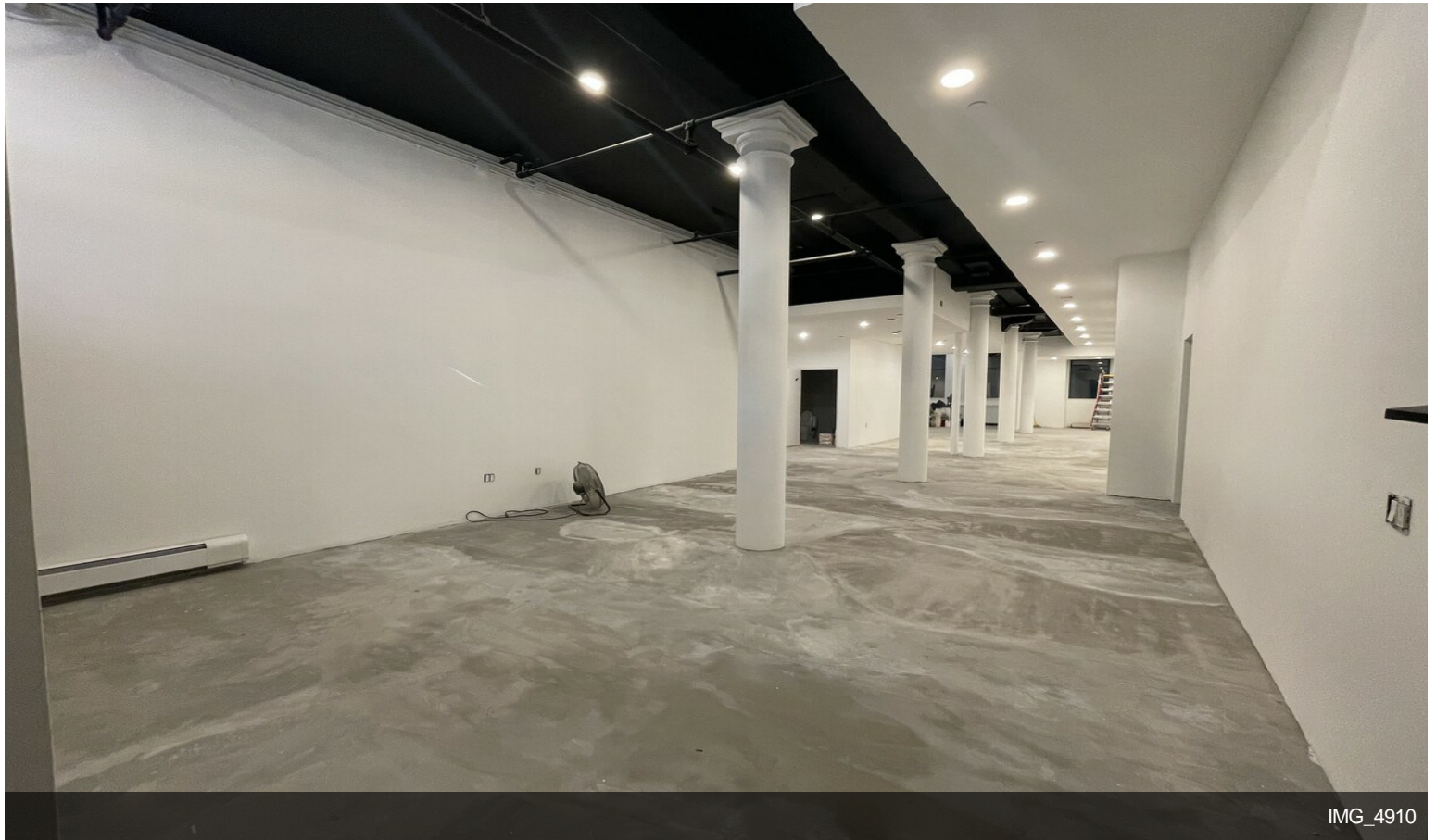


152 Franklin St, New York, NY 10013

# Property Photos

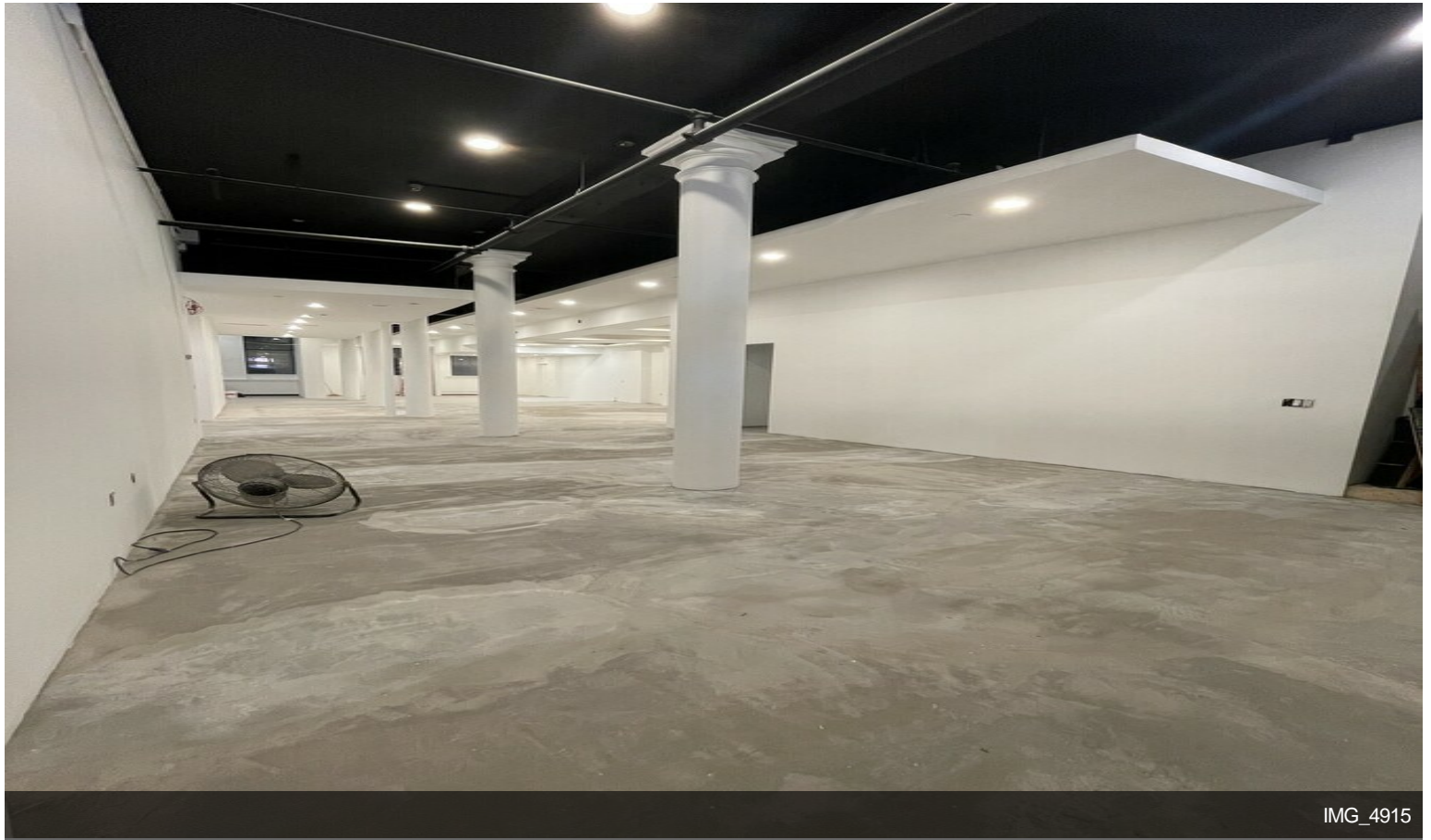


Building Photo

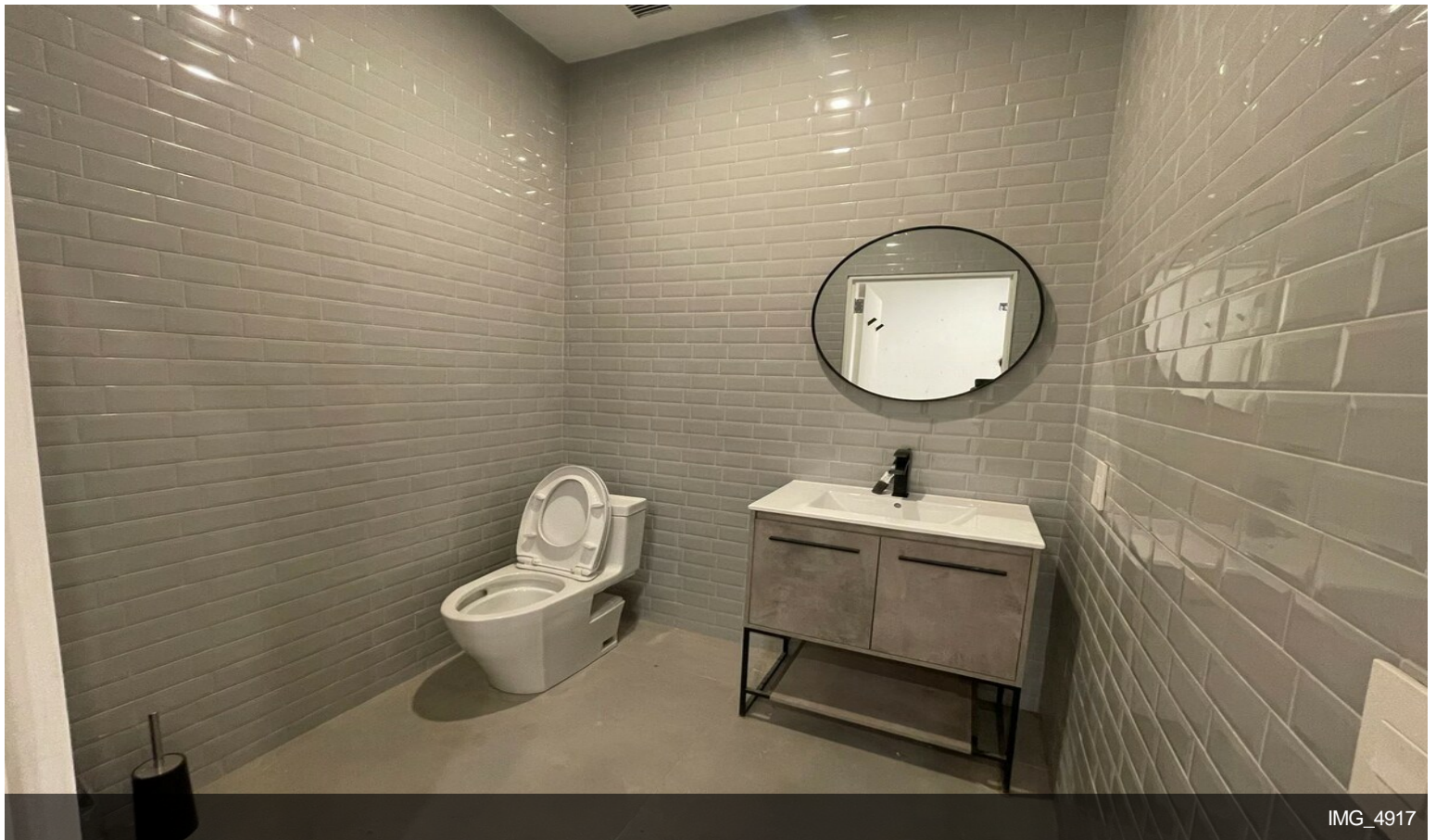


IMG\_4910

# Property Photos

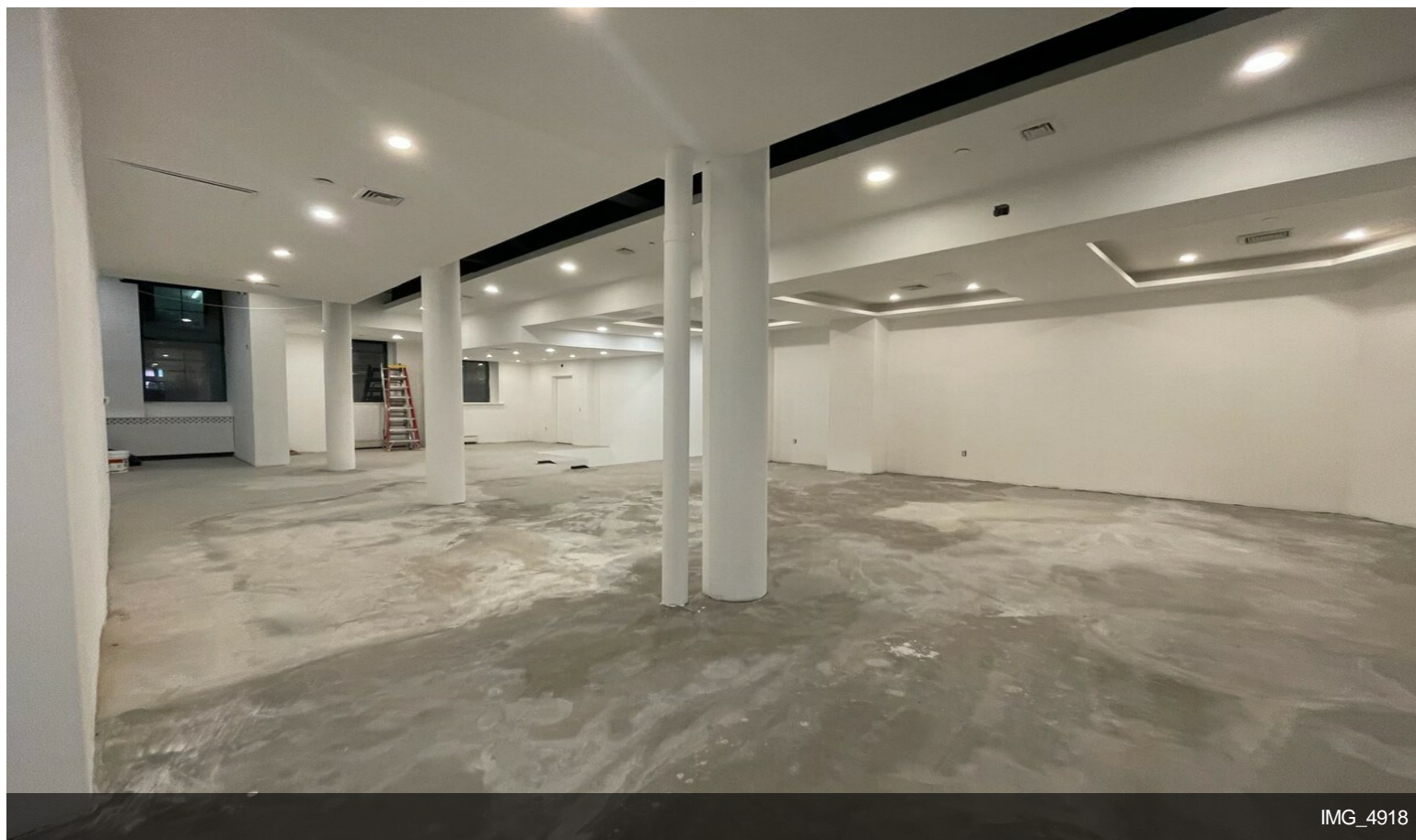


IMG\_4915

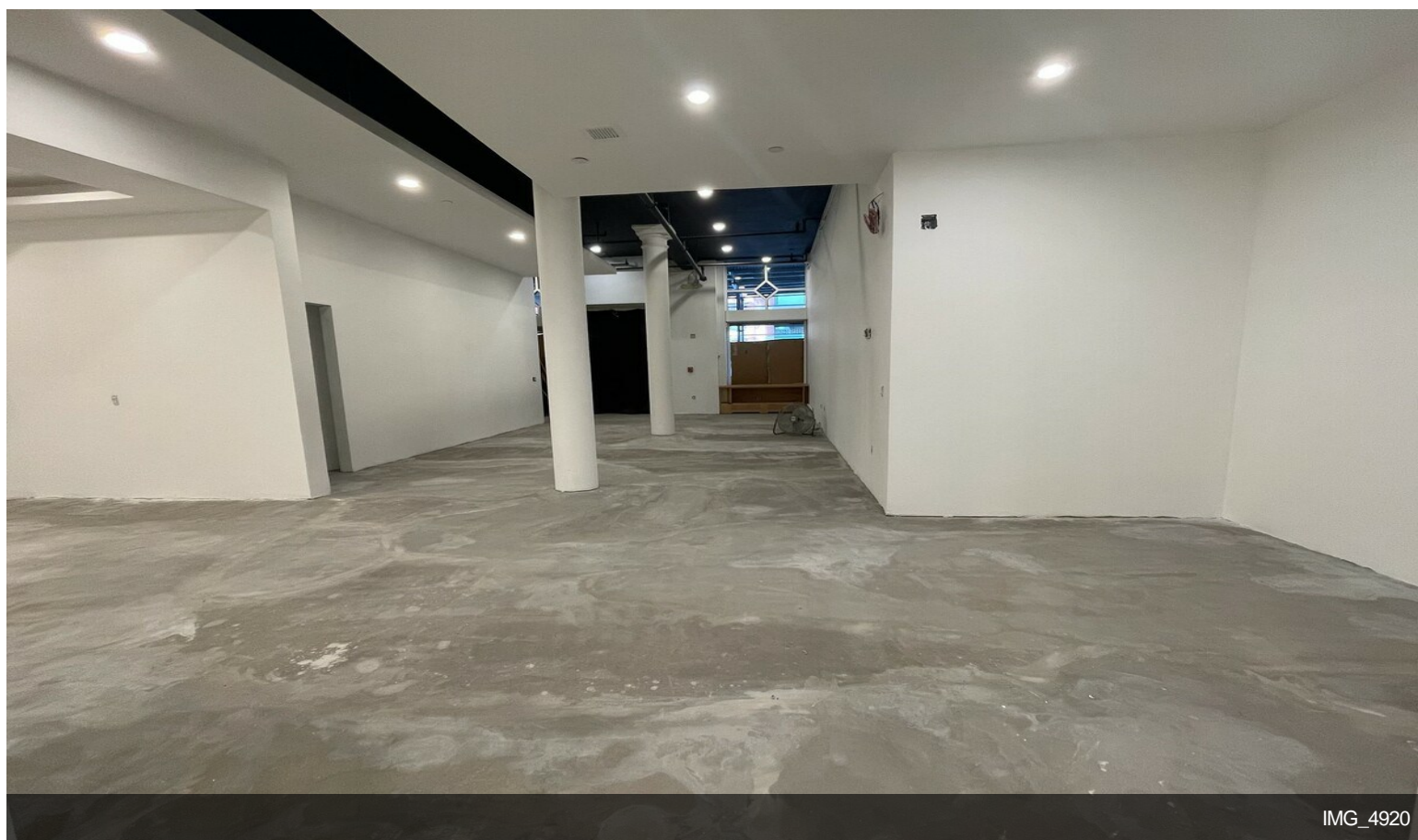


IMG\_4917

# Property Photos

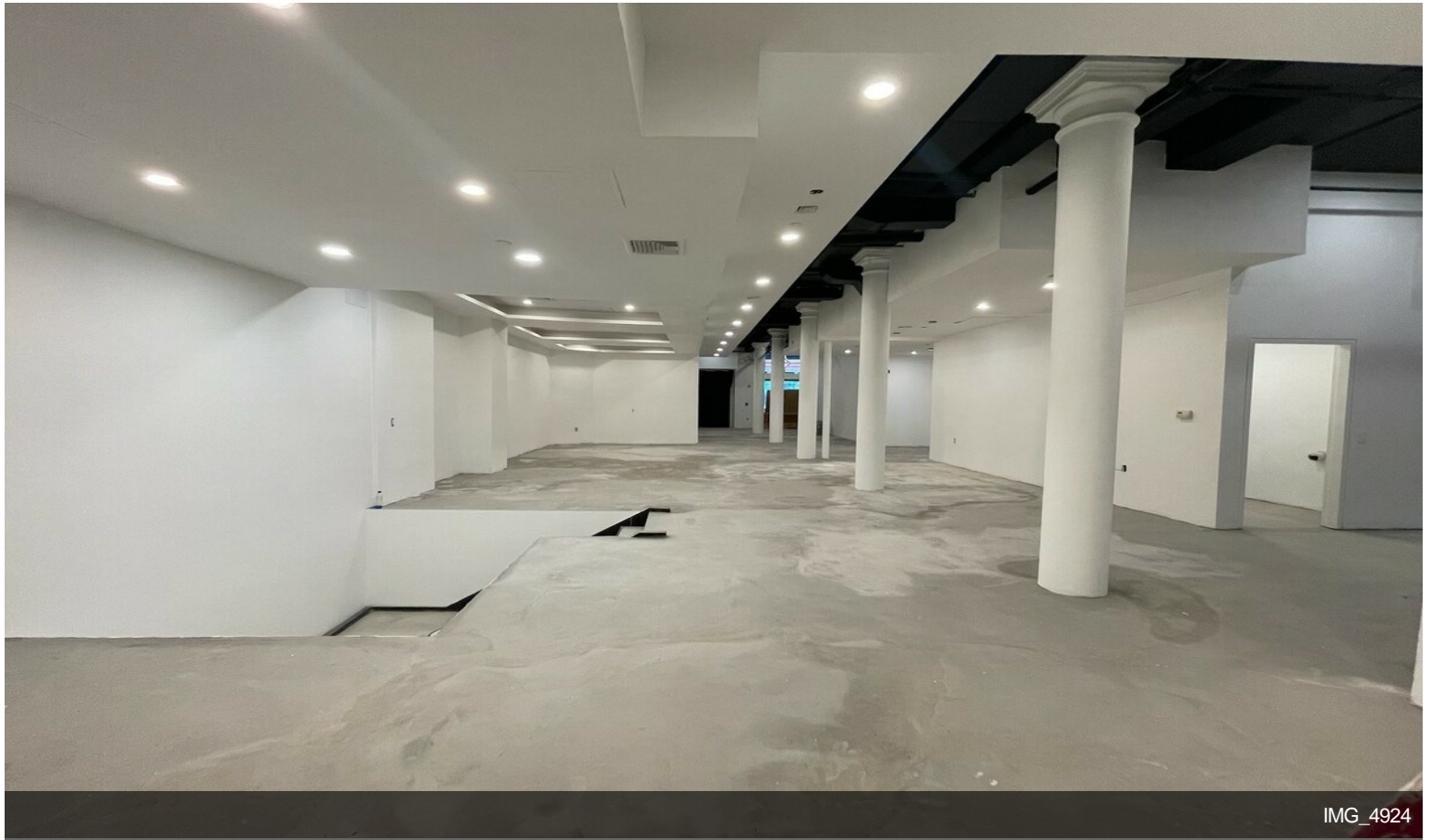


IMG\_4918



IMG\_4920

# Property Photos

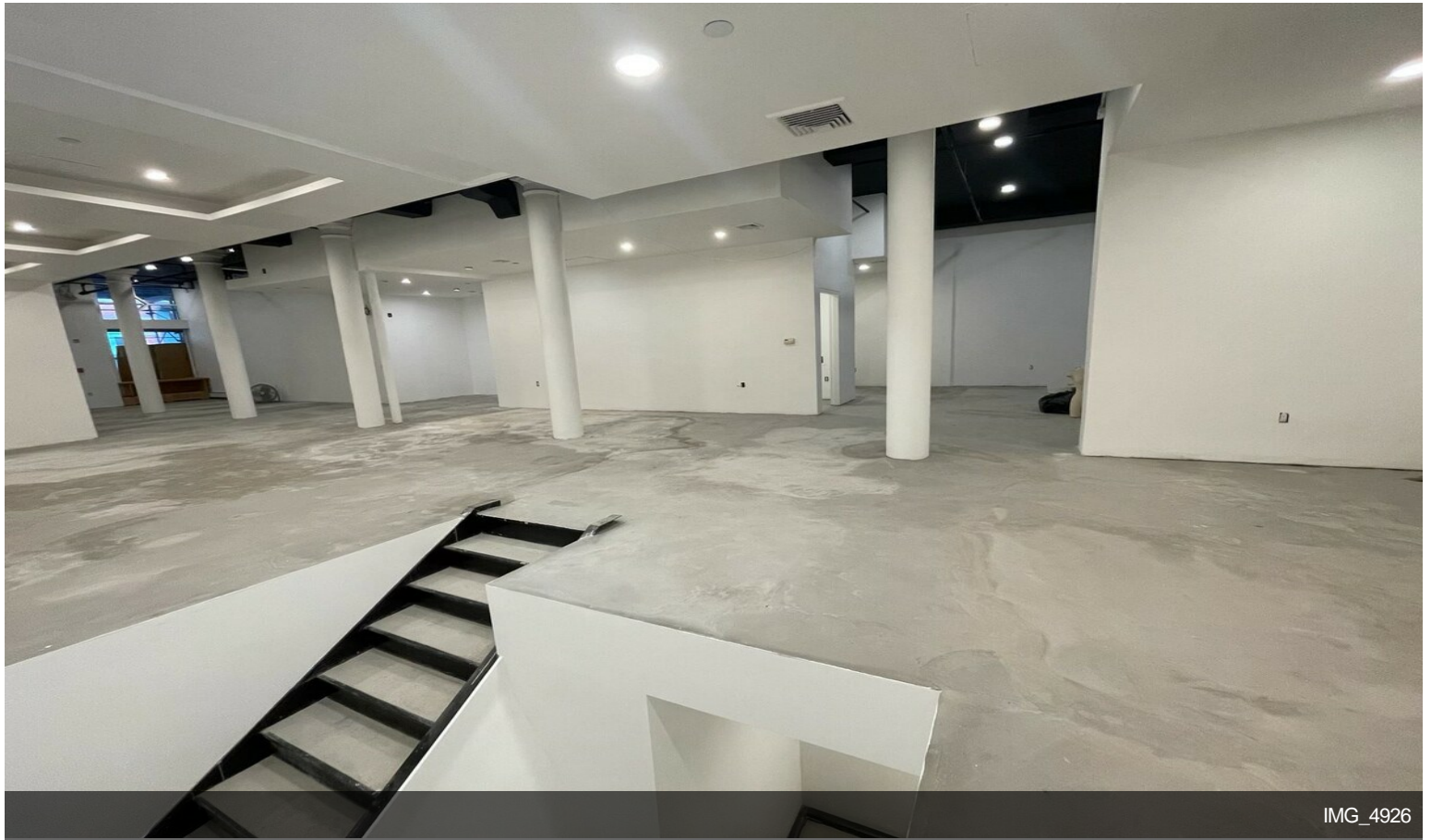


IMG\_4924

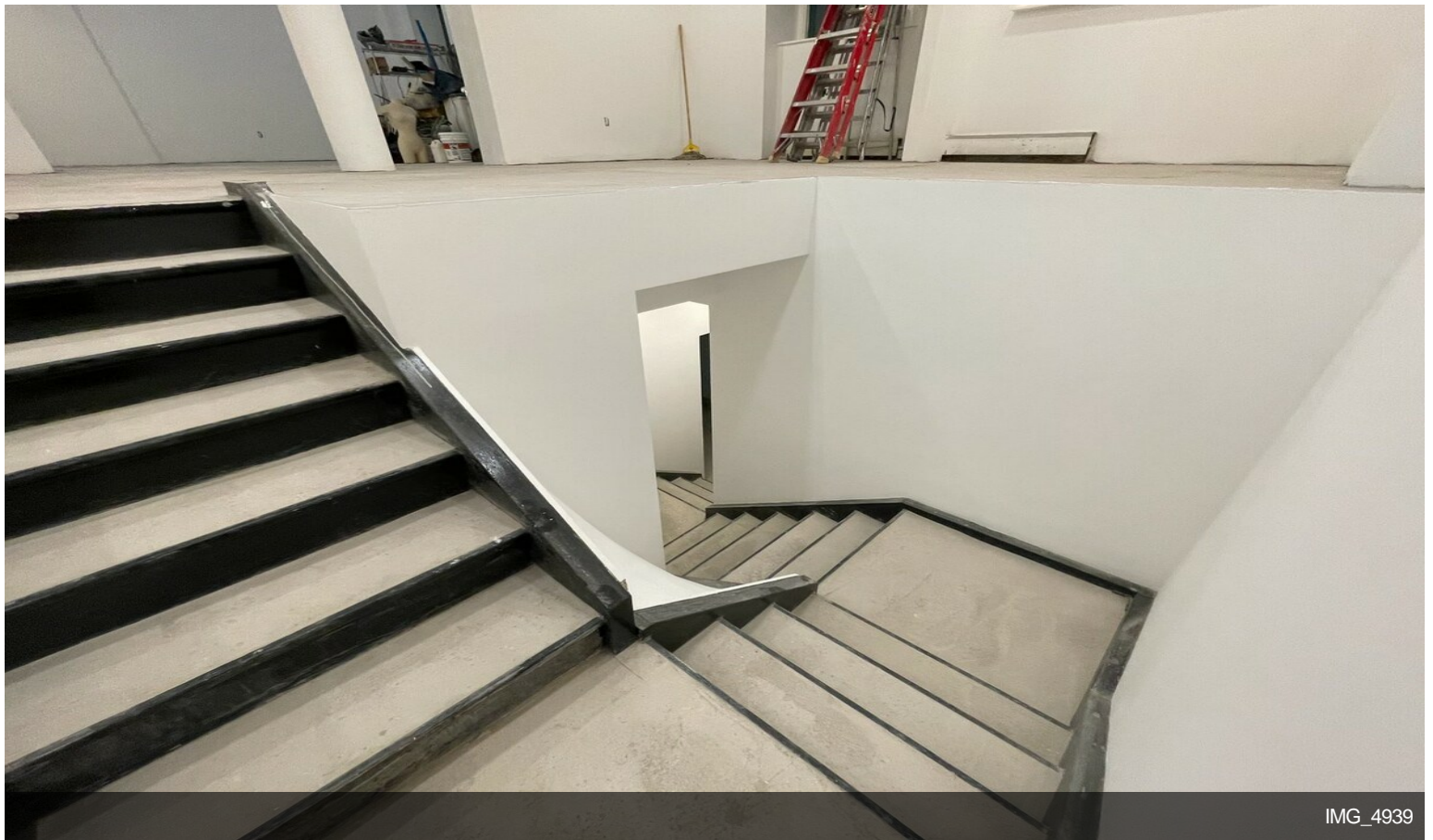


IMG\_4936

# Property Photos

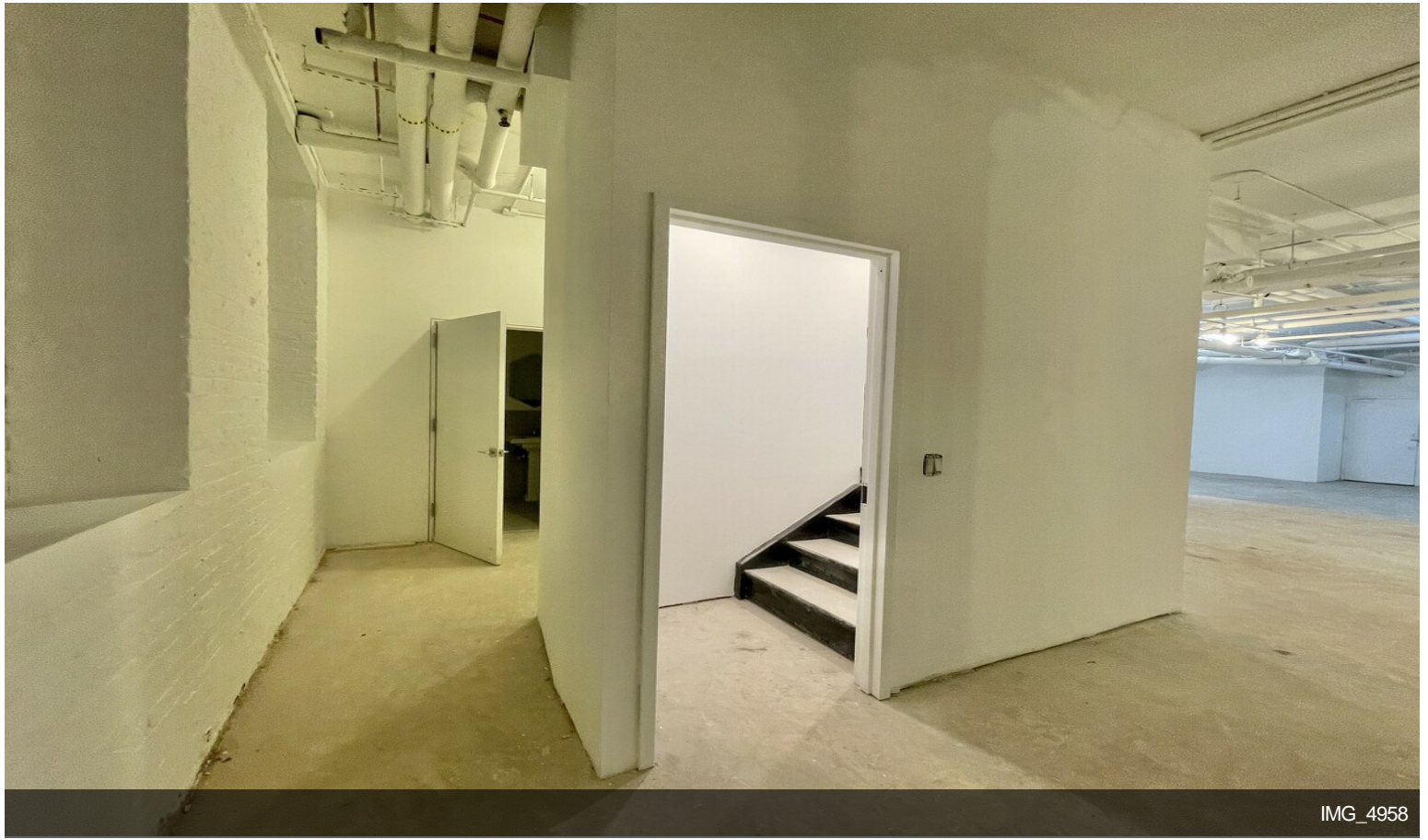


IMG\_4926

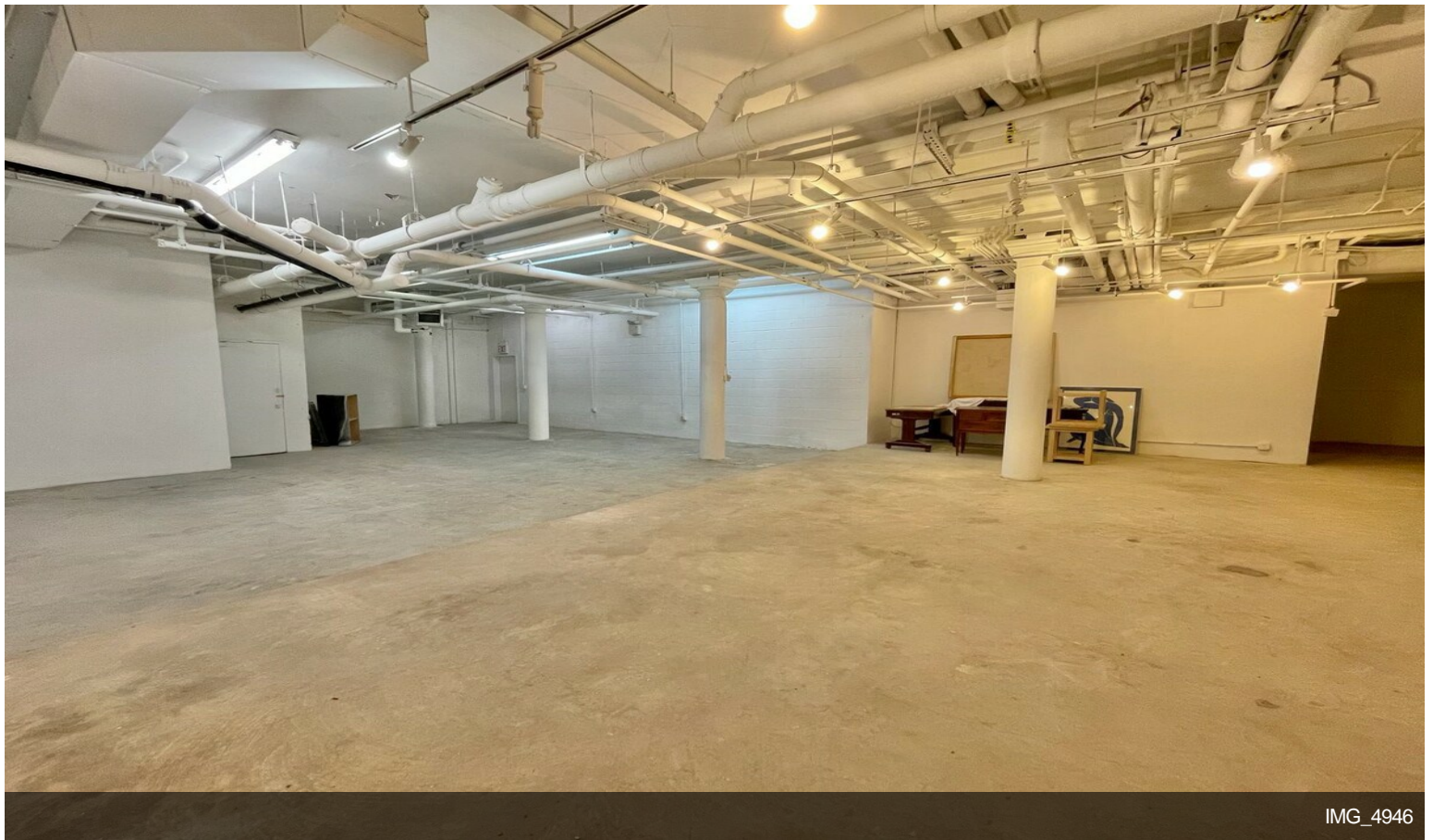


IMG\_4939

# Property Photos

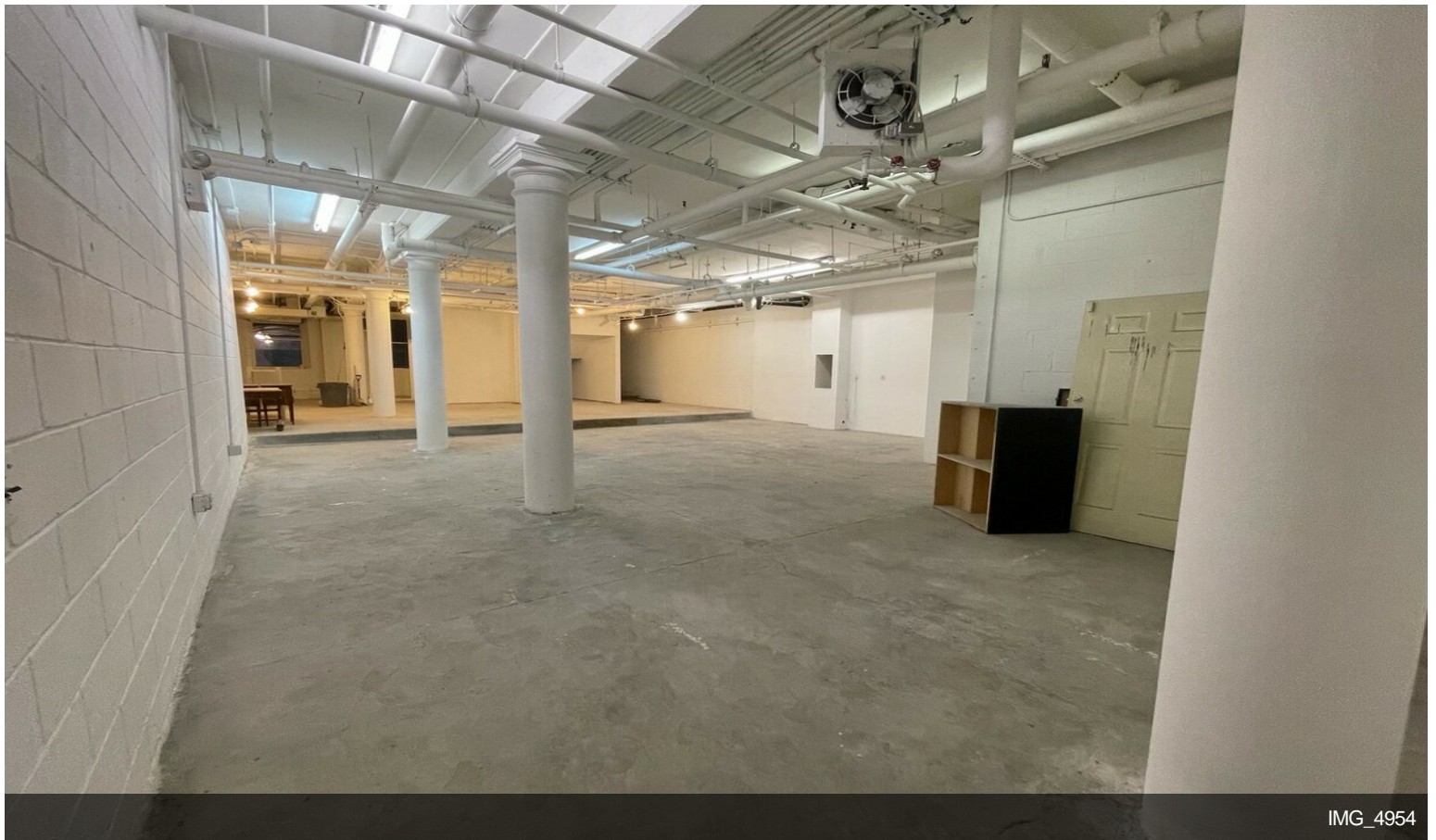
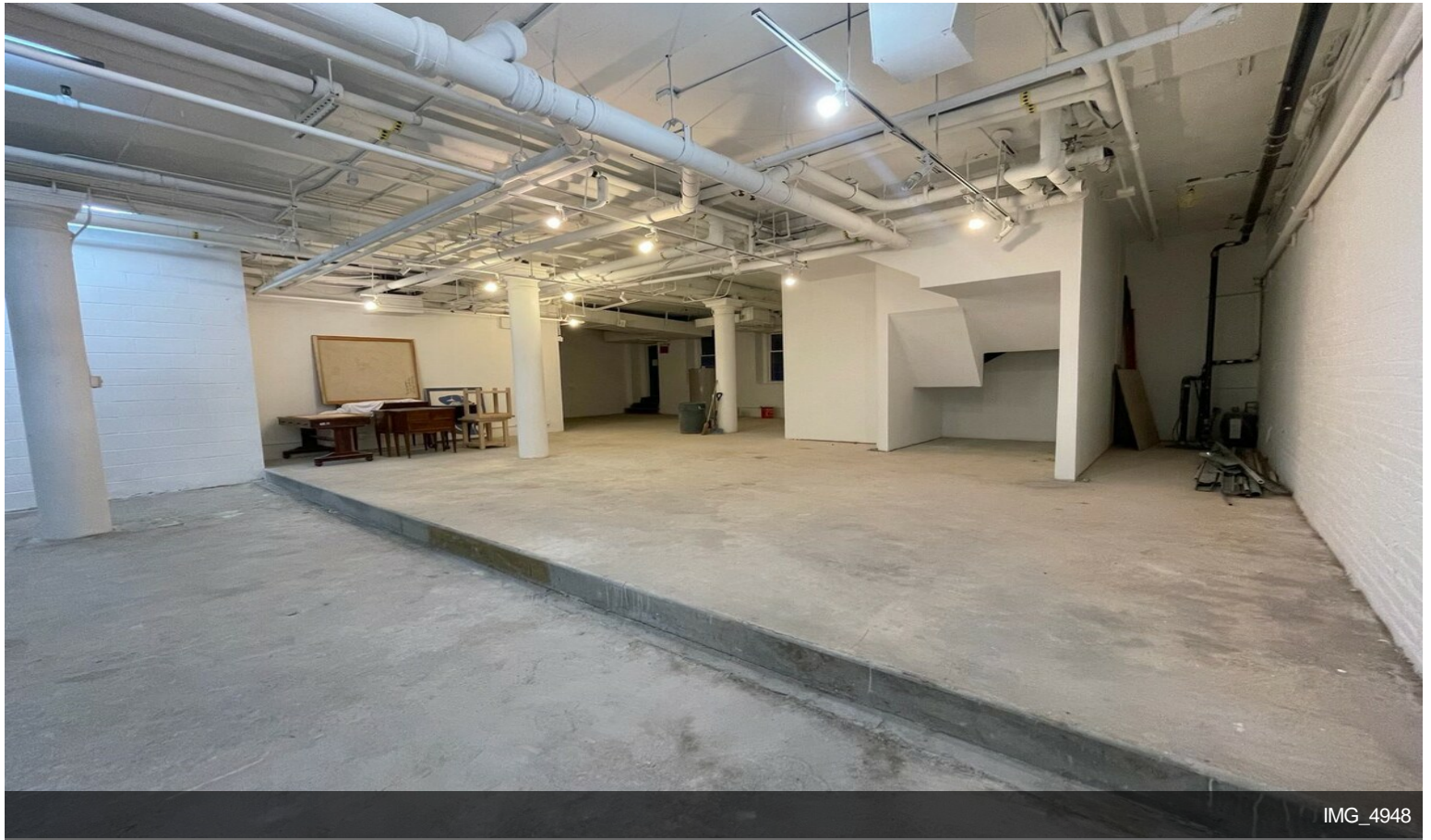


IMG\_4958

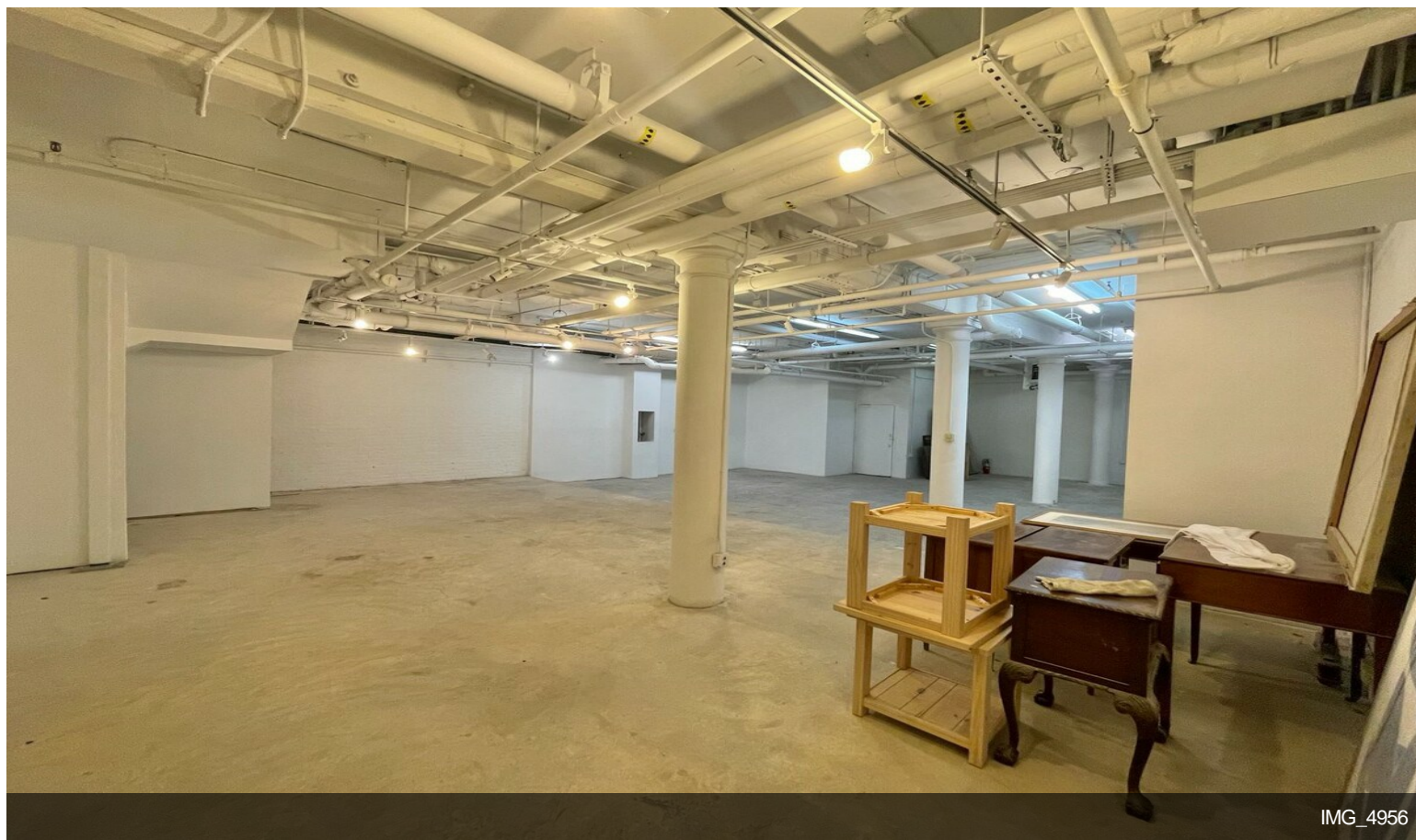


IMG\_4946

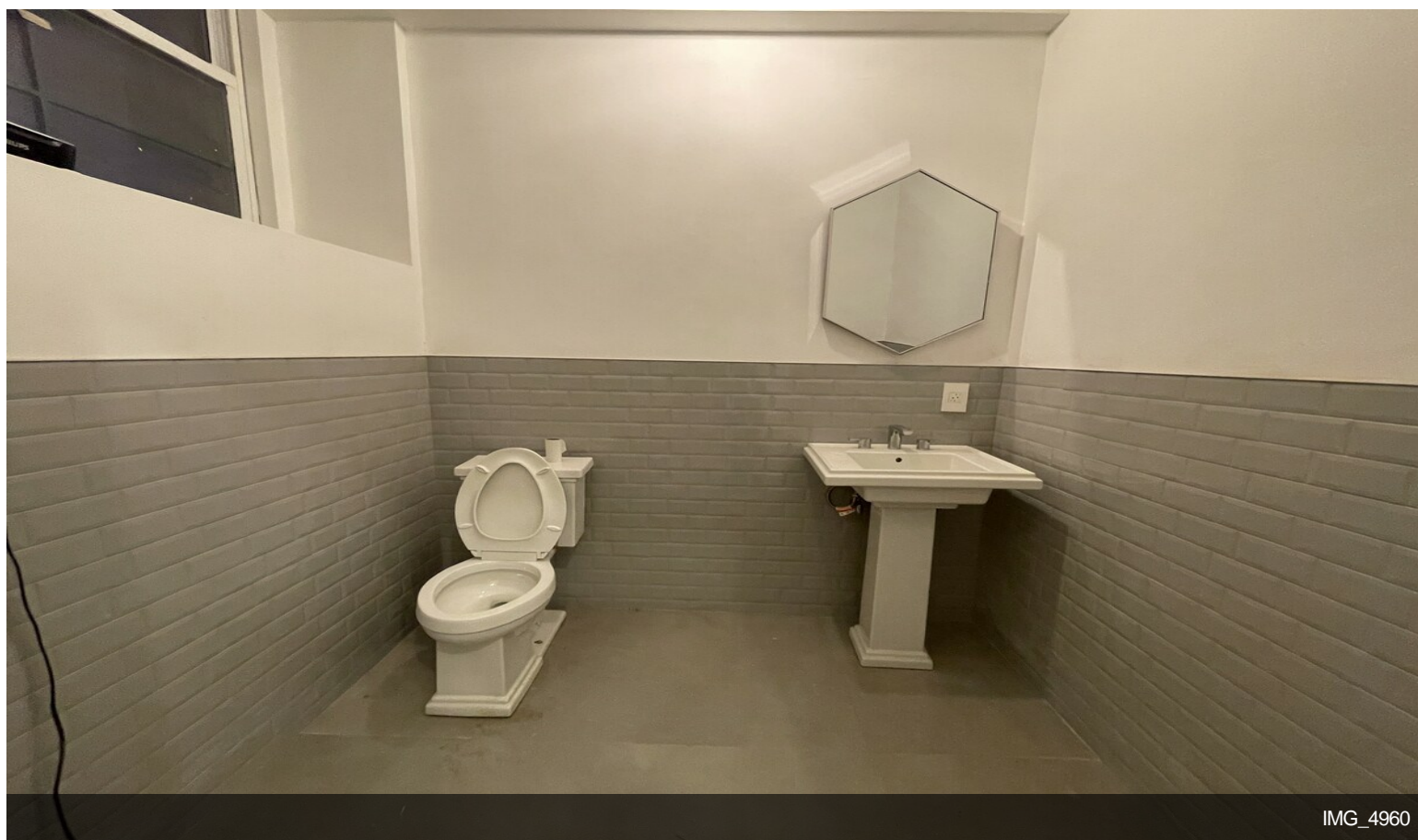
# Property Photos



# Property Photos

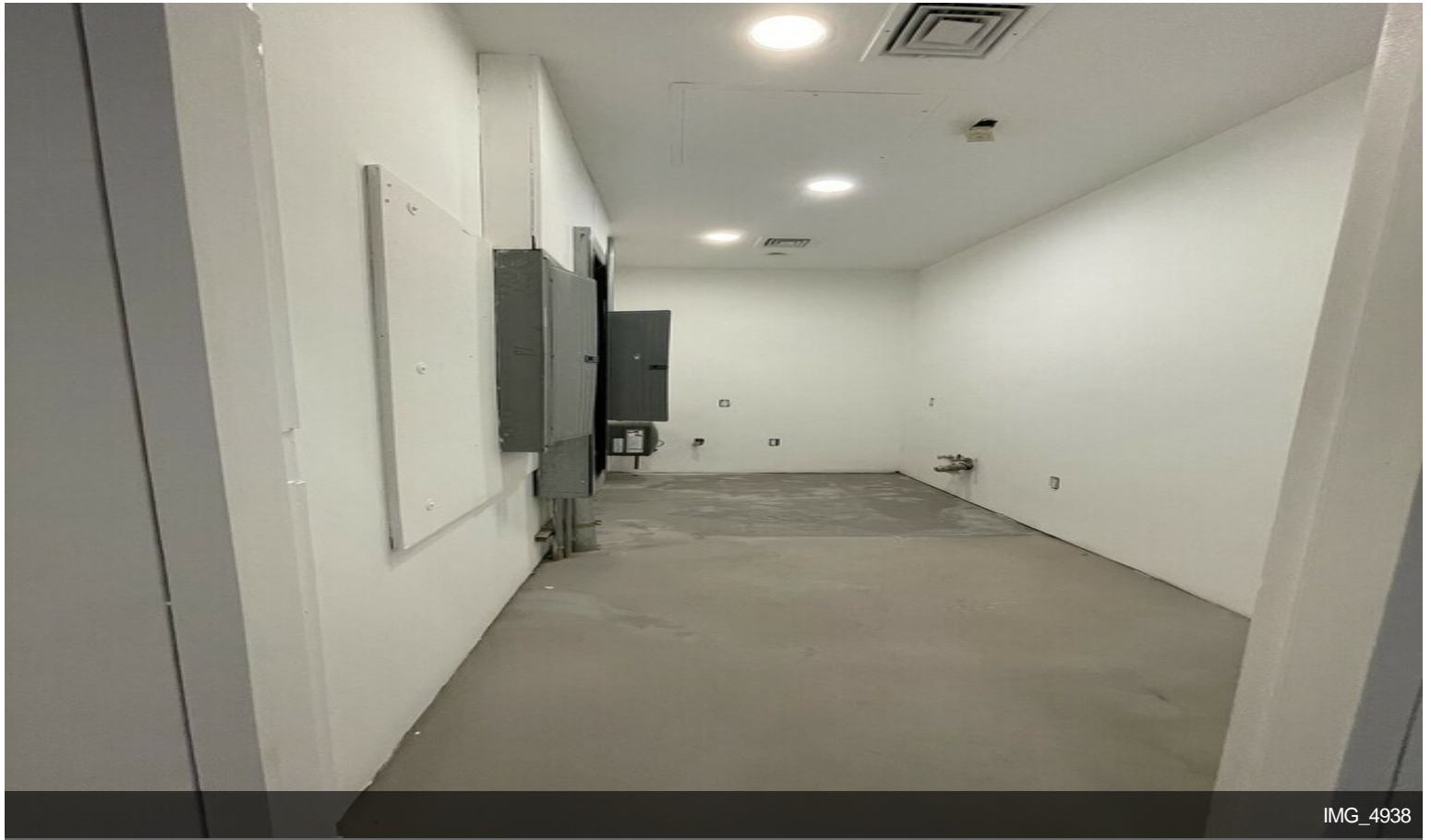


IMG\_4956

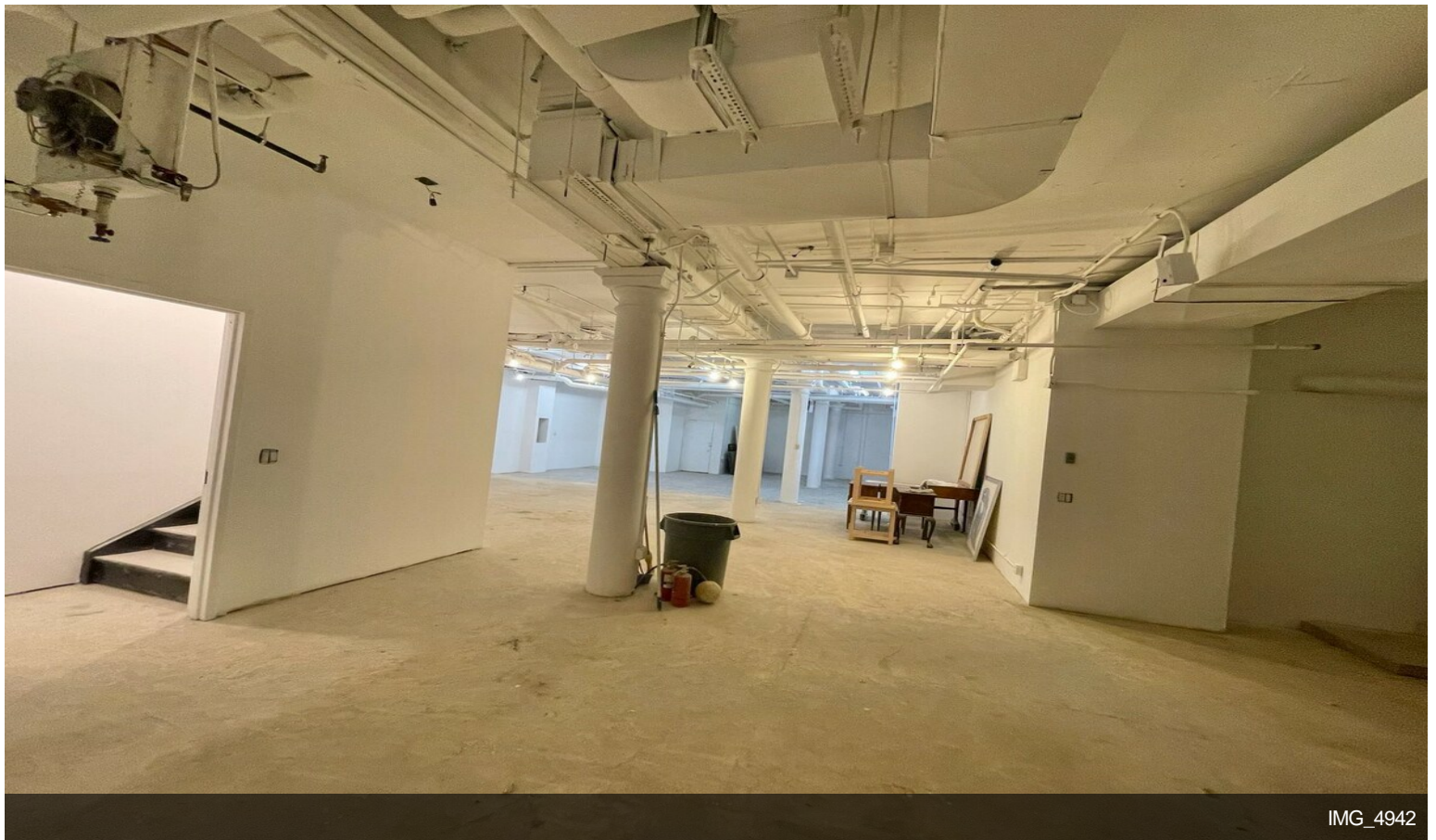


IMG\_4960

# Property Photos

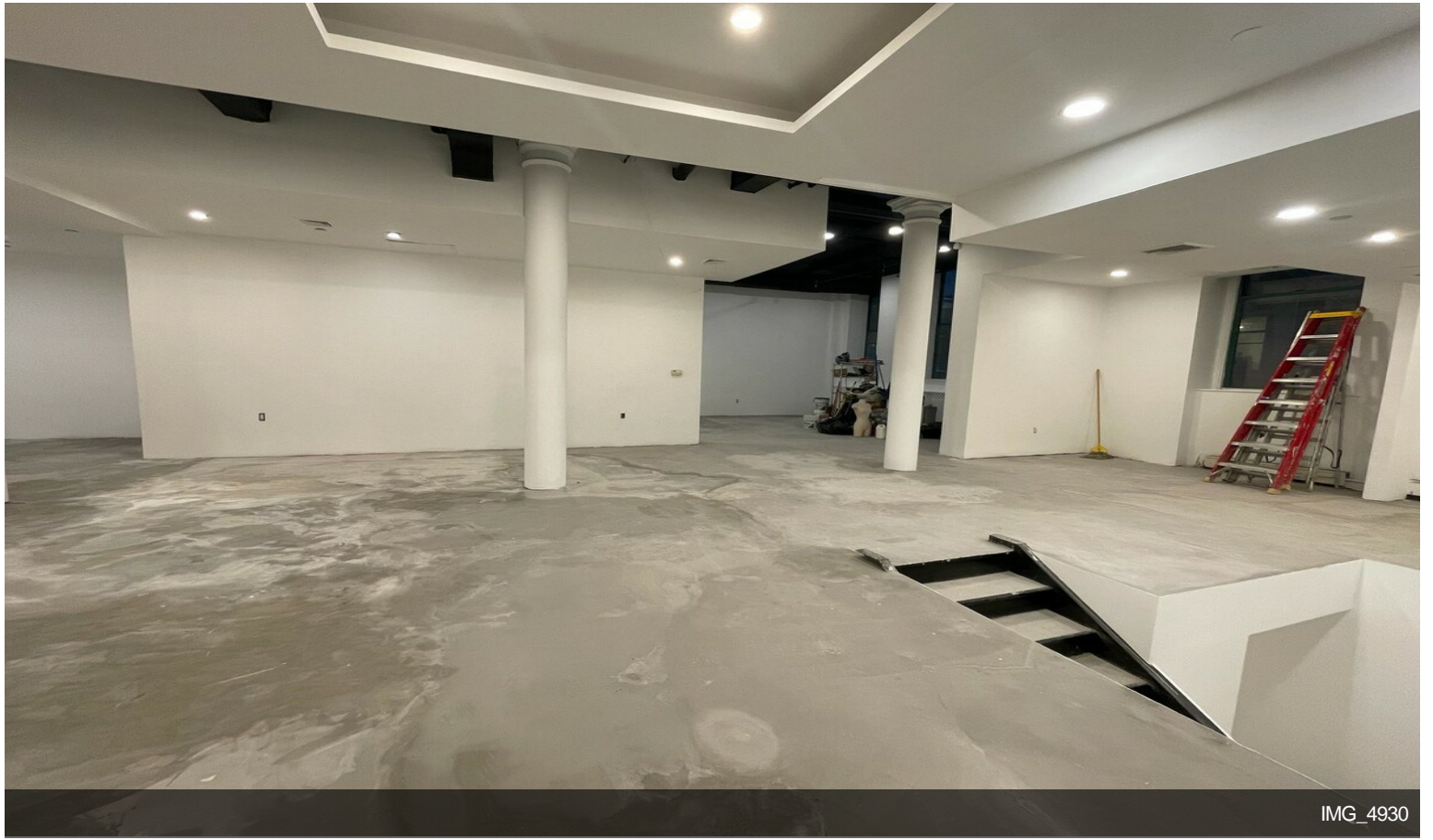


IMG\_4938



IMG\_4942

# Property Photos



IMG\_4930