



SECOND GEN DAYCARE FOR SALE IN SOUTHLAKE!

300 RANDOL MILL AVE

15,380 RSF



**CUSHMAN &
WAKEFIELD**

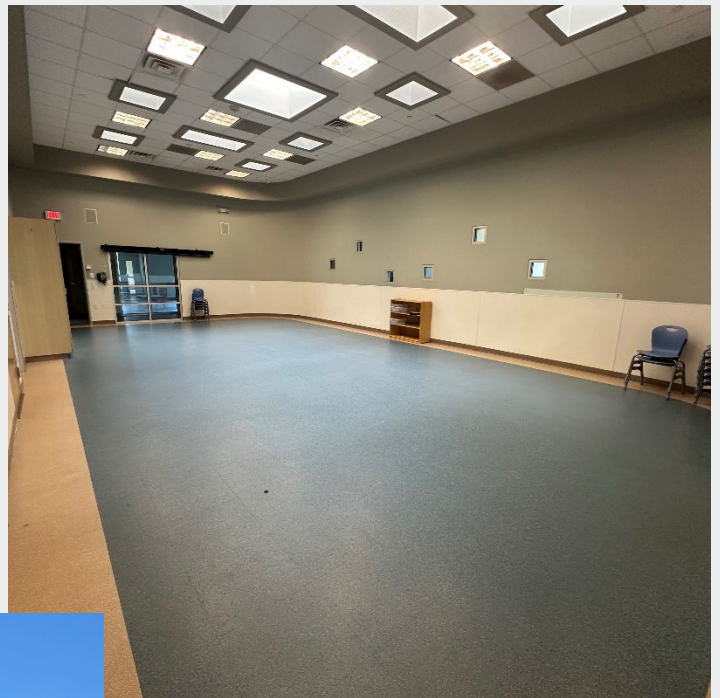
FOR SALE

300 RANDOL MILL AVE

15,380 RSF

Property Highlights

- Second Gen Daycare Facility
- 15,380/SF on 2.11 Acres
- Three Playground Areas
- Direct Access to Randol Mill Rd.
- Large Recreation Area



JOEL ZANDSTRA

+1 972 663 9787

joel.zandstra@cushwake.com

RICK HUGHES

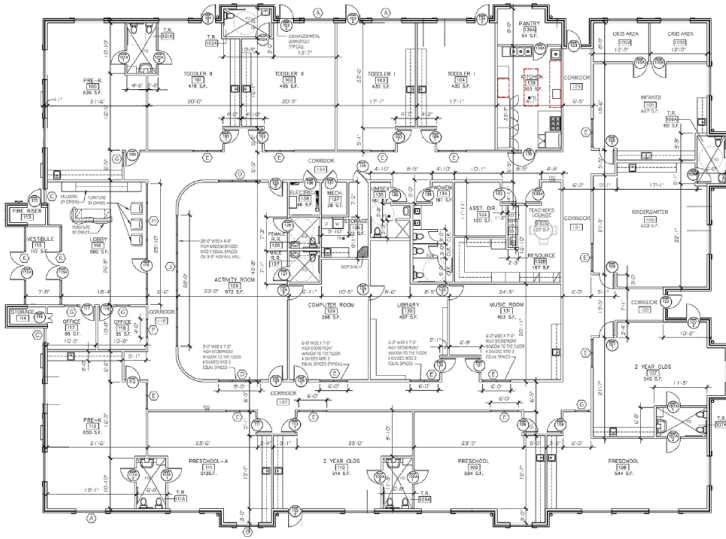
+1 972 663 9601

rick.hughes@cushwake.com

OLIVIA SARNECKI

+1 312 470 2339

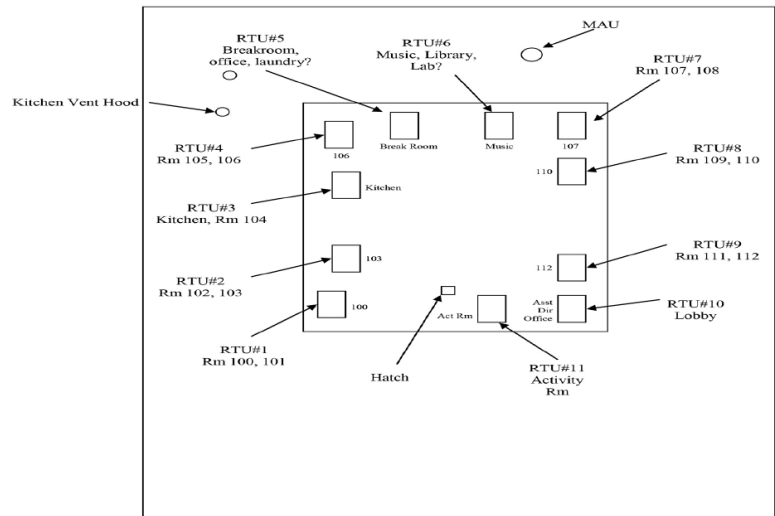
olivia.sarnecki@cushwake.com



FLOORPLAN

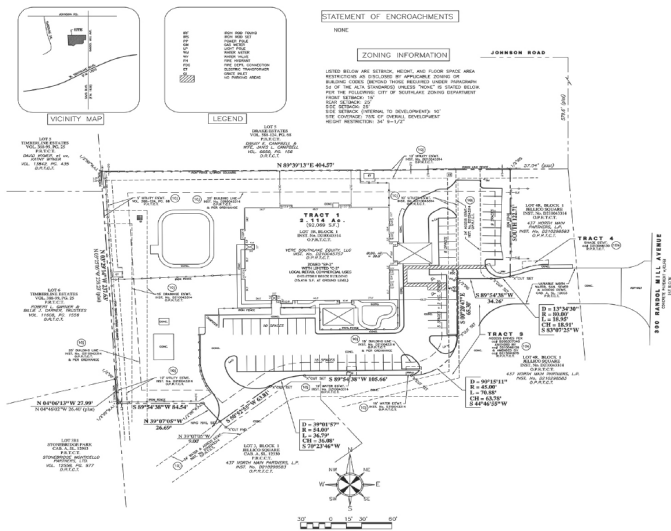
ROOFPLAN

Southlake Roof Top Units



N →

SITEPLAN



FOR SALE

300 RANDOL MILL AVE

15,380 RSF



**CUSHMAN &
WAKEFIELD**

©2020 Cushman & Wakefield. All rights reserved. The information contained in this communication is strictly confidential. This information has been obtained from sources believed to be reliable but has not been verified. NO WARRANTY OR REPRESENTATION, EXPRESS OR IMPLIED, IS MADE AS TO THE CONDITION OF THE PROPERTY (OR PROPERTIES) REFERENCED HEREIN OR AS TO THE ACCURACY OR COMPLETENESS OF THE INFORMATION CONTAINED HEREIN, AND SAME IS SUBMITTED SUBJECT TO ERRORS, OMISSIONS, CHANGE OF PRICE, RENTAL OR OTHER CONDITIONS, WITHDRAWAL WITHOUT NOTICE, AND TO ANY SPECIAL LISTING CONDITIONS IMPOSED BY THE PROPERTY OWNER(S). ANY PROJECTIONS, OPINIONS OR ESTIMATES ARE SUBJECT TO UNCERTAINTY AND DO NOT SIGNIFY CURRENT OR FUTURE PROPERTY PERFORMANCE.