



LEGEND

- SUBJECT BOUNDARY LINE
- ADJOINER BOUNDARY LINE
- RIGHT-OF-WAY LINE
- EASEMENT LINE
- CENTERLINE OF PAVEMENT
- SANITARY LINE, CLEANOUT, MANHOLE
- STORM LINE, CATCH BASIN, MANHOLE
- WATER MAIN, VALVE, HYDRANT
- OVERHEAD ELECTRIC, POWERPOLE, ANCHOR
- AXLE, DETECT, PIN, PIPE, MONUMENT, CONCRETE MONUMENT, DRILL HOLE, SET PIN

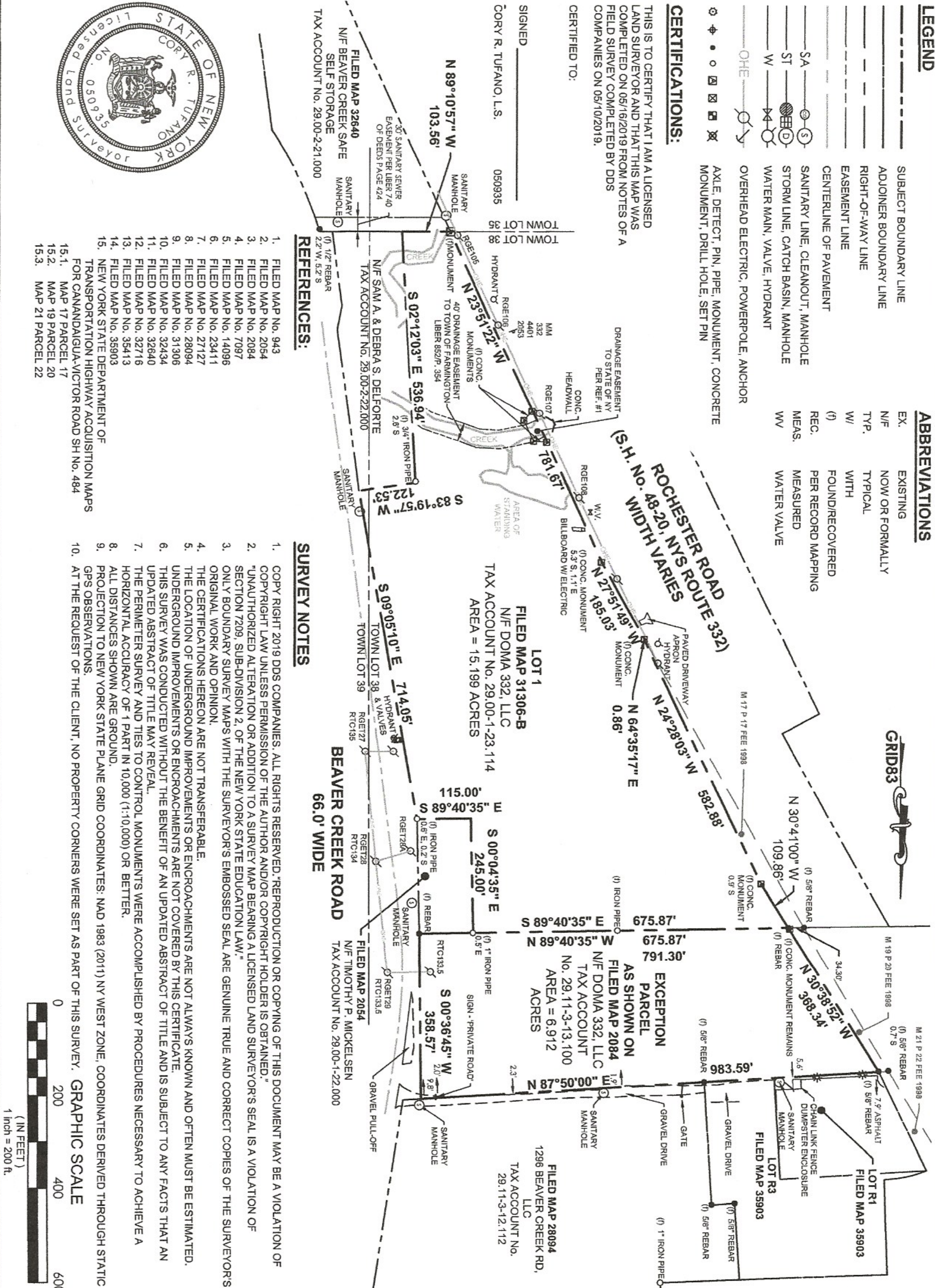
ABBREVIATIONS

- EX. EXISTING
- N/F NOW OR FORMALLY
- TYP. TYPICAL
- W/ WITH
- (f) FOUND/RECOVERED
- REC. PER RECORD MAPPING
- MEAS. MEASURED
- WV WATER VALVE

CERTIFICATIONS:

THIS IS TO CERTIFY THAT I AM A LICENSED LAND SURVEYOR AND THAT THIS MAP WAS COMPLETED ON 05/16/2019 FROM NOTES OF A FIELD SURVEY COMPLETED BY DDS COMPANIES ON 05/10/2019.

SIGNED _____
CORY R. TUFANO, L.S.
050935

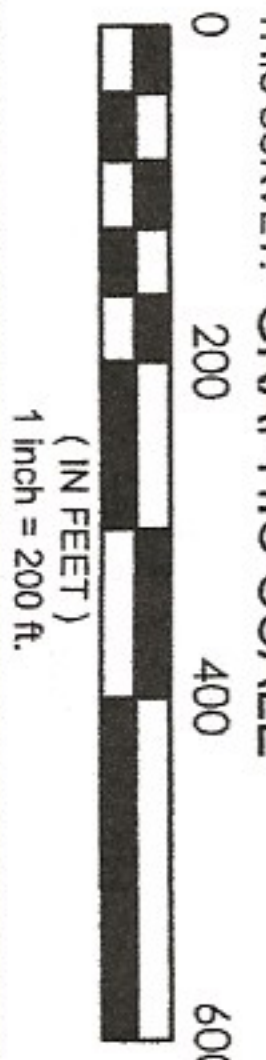


REFERENCES:

1. FILED MAP No. 943
2. FILED MAP No. 2054
3. FILED MAP No. 2084
4. FILED MAP No. 7097
5. FILED MAP No. 14098
6. FILED MAP No. 23411
7. FILED MAP No. 27127
8. FILED MAP No. 28094
9. FILED MAP No. 31306
10. FILED MAP No. 32434
11. FILED MAP No. 32640
12. FILED MAP No. 32716
13. FILED MAP No. 35413
14. FILED MAP No. 35903
15. NEW YORK STATE DEPARTMENT OF TRANSPORTATION HIGHWAY ACQUISITION MAPS FOR CANNANDAUGUA-VICTOR ROAD SH No. 484

SURVEY NOTES

1. COPY RIGHT 2019 DDS COMPANIES. ALL RIGHTS RESERVED. REPRODUCTION OR COPYING OF THIS DOCUMENT MAY BE A VIOLATION OF COPYRIGHT LAW UNLESS PERMISSION OF THE AUTHOR AND/OR COPYRIGHT HOLDER IS OBTAINED.
2. UNAUTHORIZED ALTERATION OR ADDITION TO A SURVEY MAP BEARING A LICENSED LAND SURVEYOR'S SEAL IS A VIOLATION OF SECTION 7209, SUB-DIVISION 2, OF THE NEW YORK STATE EDUCATION LAW.
3. ONLY BOUNDARY SURVEY MAPS WITH THE SURVEYOR'S EMBOSSED SEAL ARE GENUINE TRUE AND CORRECT COPIES OF THE SURVEYOR'S ORIGINAL WORK AND OPINION.
4. THE CERTIFICATIONS HEREON ARE NOT TRANSFERABLE.
5. THE LOCATION OF UNDERGROUND IMPROVEMENTS OR ENCROACHMENTS ARE NOT ALWAYS KNOWN AND OFTEN MUST BE ESTIMATED. UNDERGROUND IMPROVEMENTS OR ENCROACHMENTS ARE NOT COVERED BY THIS CERTIFICATE.
6. THIS SURVEY WAS CONDUCTED WITHOUT THE BENEFIT OF AN UPDATED ABSTRACT OF TITLE AND IS SUBJECT TO ANY FACTS THAT AN UPDATED ABSTRACT OF TITLE MAY REVEAL.
7. THE PERIMETER SURVEY AND TIES TO CONTROL MONUMENTS WERE ACCOMPLISHED BY PROCEDURES NECESSARY TO ACHIEVE A HORIZONTAL ACCURACY OF 1 PART IN 10,000 (1:10,000) OR BETTER.
8. ALL DISTANCES SHOWN ARE GROUND.
9. PROJECTION TO NEW YORK STATE PLANE GRID COORDINATES. NAD 1983 (2011) NY WEST ZONE. COORDINATES DERIVED THROUGH STATIC GPS OBSERVATIONS.
10. AT THE REQUEST OF THE CLIENT, NO PROPERTY CORNERS WERE SET AS PART OF THIS SURVEY. GRAPHIC SCALE



45 HENDRIX ROAD
WEST HENRIETTA, NY 14586
PHONE: (585) 359-7540
FAX: (585) 359-7547

NO.	DATE	BY	REVISIONS PER.
1			
2			
3			
4			
5			
6			

PROJECT NAME:
MAP OF SURVEY OF LANDS NOW OR FORMERLY OF DOMA 332, LLC

SITUATE IN PART OF
TOWN LOTS 38 & 39,
TOWNSHIP 11, RANGE 3
COUNTY OF ONTARIO
STATE OF NEW YORK

DRAFTED BY: N.A.F.
CHECKED BY: M.J.G.
APPROVED BY: C.R.T.
DATE: 05/16/2019
PROJECT NO.: 70-19-0043

DRAWING TITLE:
INSTRUMENT SURVEY

DRAWING SCALE:
1" = 200'

DRAWING NO.:
70190043_FARMINGTON BASE