

Property Summary



PROPERTY DESCRIPTION

This well-maintained property, built in 1963 and renovated in 2006, offers 1,698 square feet of versatile space situated on 1.59 acres of land. The office area includes three offices, a large conference room, two bathrooms, and a kitchenette.

Price Drop—The warehouse/shop building was damaged by fire and has been demolished. Due to the fire, the price has been reduced from \$450,000 to \$375,000.

LOCATION DESCRIPTION

Close proximity to Hwy 152 just east of Mustang. Easy access to the southern Kilpatrick Loop (I-344).

OFFERING SUMMARY

Sale Price:	\$375,000
Number of Units:	1
Lot Size:	70,217 SF
Building Size:	1,698 SF

DEMOGRAPHICS	3 MILES	5 MILES	10 MILES
Total Households	5,162	24,452	177,193
Total Population	15,564	68,979	469,188
Average HH Income	\$110,292	\$96,967	\$79,815

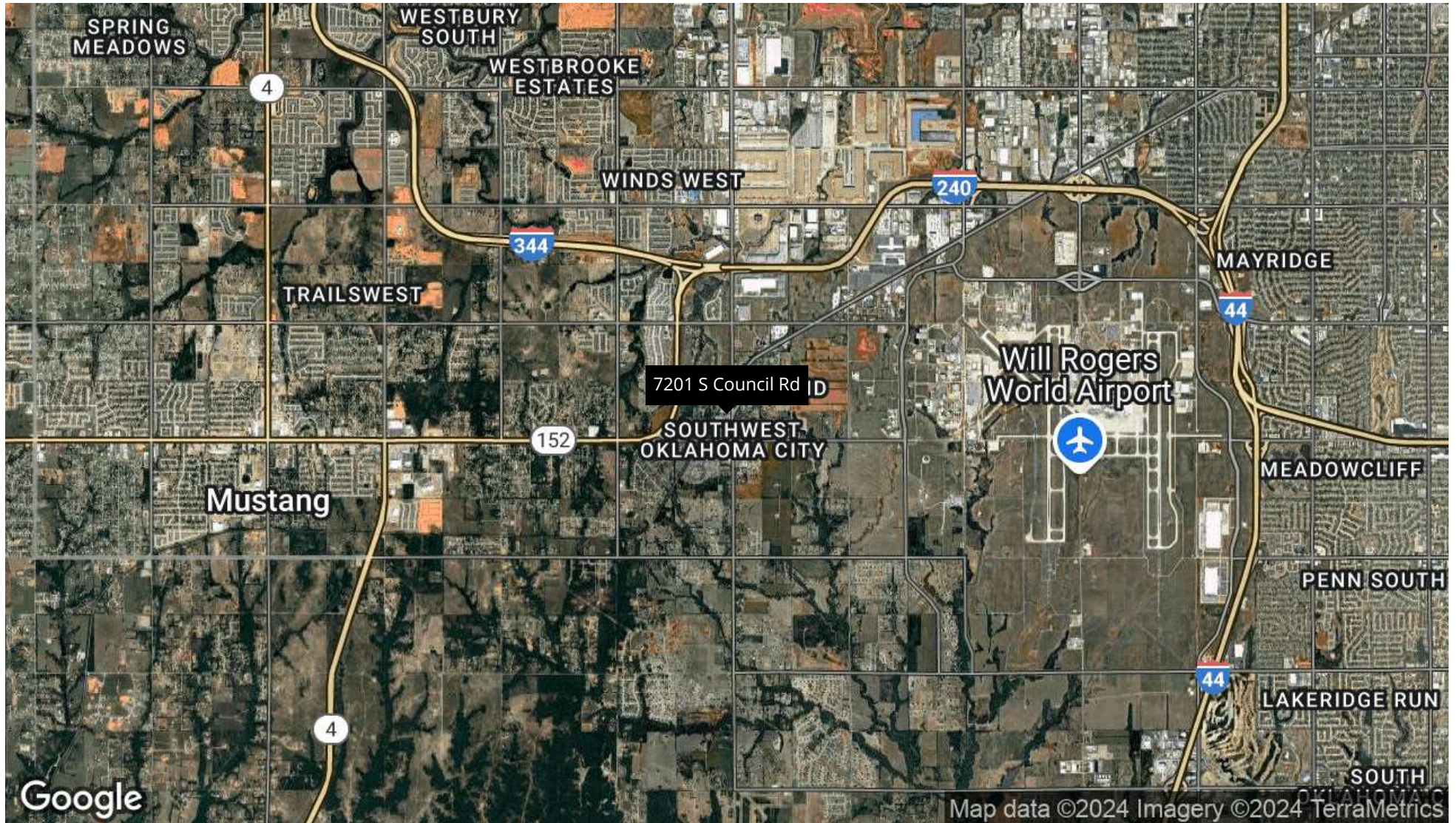
PAUL SWALES

BROKER
405.477.1894
PAUL@OKLAHOMACREBROKER.COM

Industrial Property For Sale

OKLAHOMA CITY, OK 73169

Location Map



PAUL SWALES

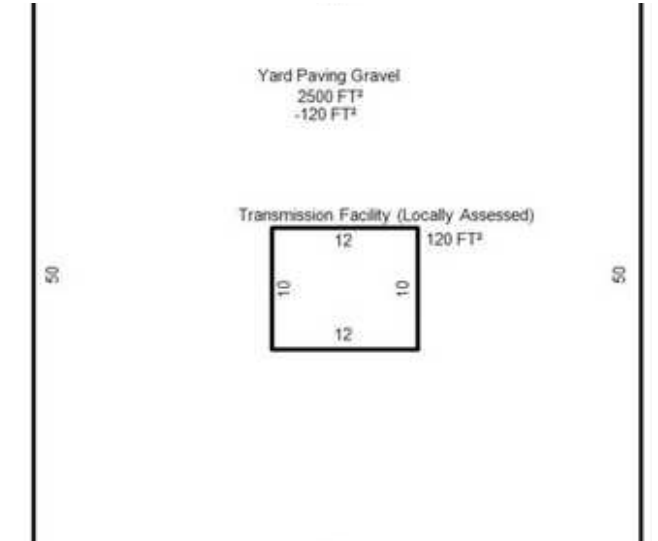
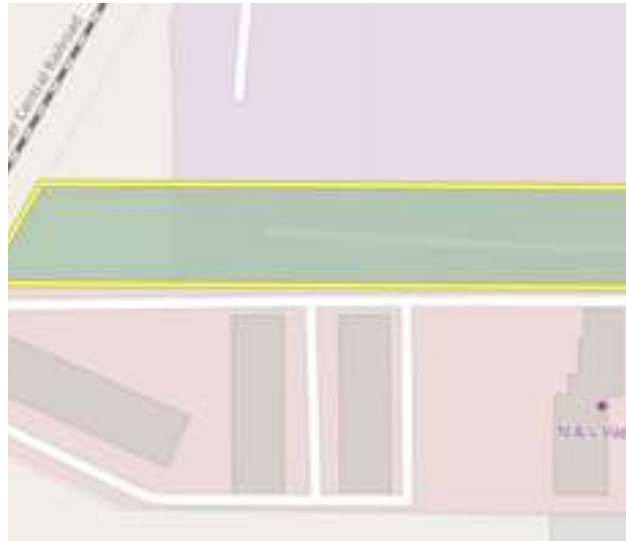
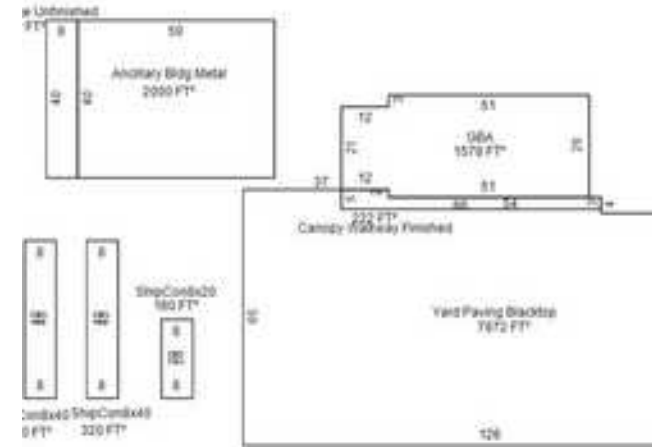
BROKER
405.477.1894
PAUL@OKLAHOMACREBROKER.COM

1508 WEST EDMOND ROAD • • • SALTCOMMERCIAL.REALESTATE

Salt
COMMERCIAL
REAL ESTATE

Industrial Property For Sale
OKLAHOMA CITY, OK 73169

Additional Photos



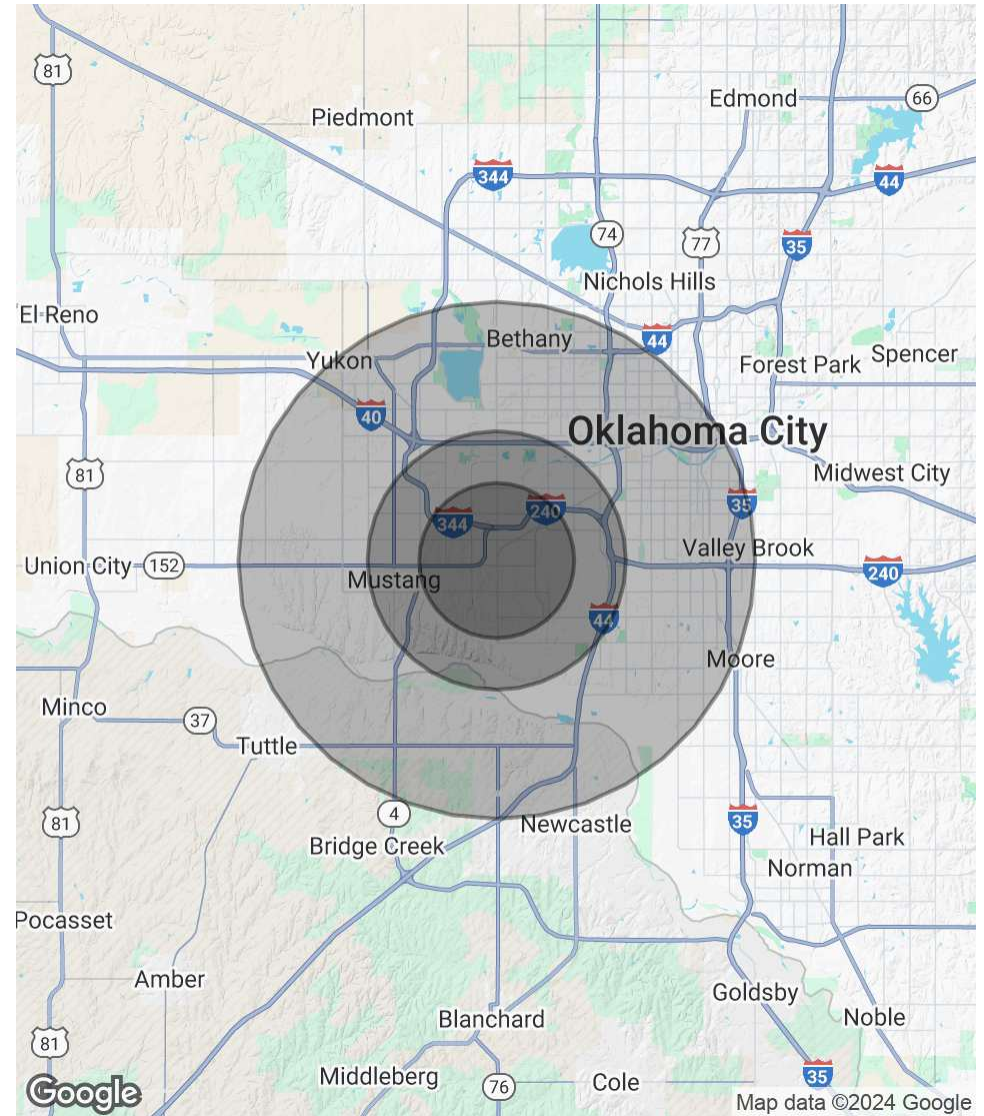
PAUL SWALES
 BROKER
 405.477.1894
 PAUL@OKLAHOMACREBROKER.COM

Demographics Map & Report

POPULATION	3 MILES	5 MILES	10 MILES
Total Population	15,564	68,979	469,188
Average Age	37	36	37
Average Age (Male)	0	0	0
Average Age (Female)	0	0	0

HOUSEHOLDS & INCOME	3 MILES	5 MILES	10 MILES
Total Households	5,162	24,452	177,193
# of Persons per HH	3	2.8	2.6
Average HH Income	\$110,292	\$96,967	\$79,815
Average House Value	\$293,483	\$258,330	\$221,683

Demographics data derived from AlphaMap



PAUL SWALES

BROKER
405.477.1894
PAUL@OKLAHOMACREBROKER.COM

Salt
COMMERCIAL
REAL ESTATE