

26567 N. County
Road 3250
Wynnewood, OK
73098

Retail / Industrial Building For Sale
1,200 SF on 1 Acre MOL
REDUCED! Sales Price: \$195,000



HAVE QUESTIONS?
405.840.0600
NAISULLIVANGROUP.COM

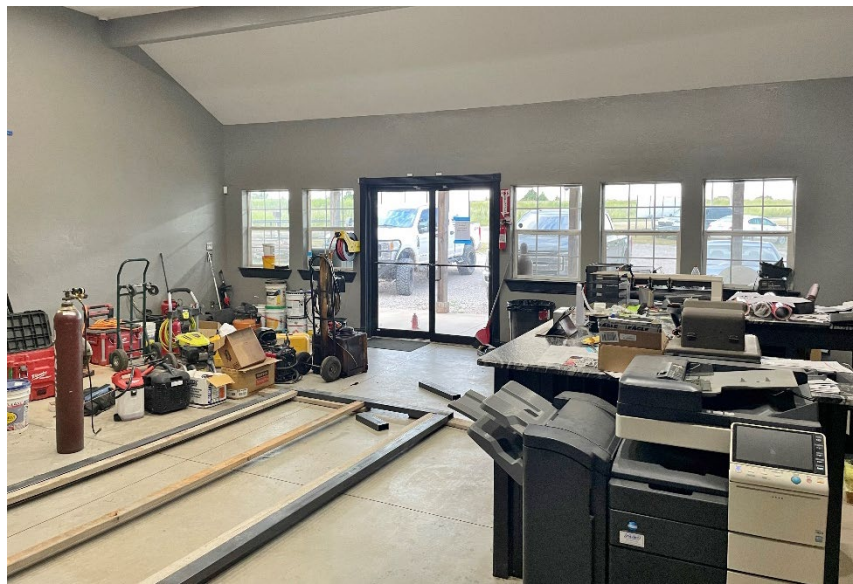
Bob Sullivan, CCIM
405.641.9798
BOB@NAISULLIVANGROUP.COM

NAI Sullivan Group

Clark Everett
405.985.8424
CLARK@NAISULLIVANGROUP.COM



- Free Standing Building
- Ample Parking
- I-35 Visibility
- Yard for Storage
- Two Office Spaces
- Within 1.5 Miles of I-35 Entrance



HAVE QUESTIONS?
405.840.0600
NAISULLIVANGROUP.COM

Bob Sullivan, CCIM
405.641.9798
BOB@NAISULLIVANGROUP.COM

NAI Sullivan Group

Clark Everett
405.985.8424
CLARK@NAISULLIVANGROUP.COM



B

HAVE QUESTIONS?
405.840.0600
NAISULLIVANGROUP.COM

Bob Sullivan, CCIM
405.641.9798
BOB@NAISULLIVANGROUP.COM

NAI Sullivan Group

Clark Everett
405.985.8424
CLARK@NAISULLIVANGROUP.COM



	1 MILE	3 MILE	5 MILE
POPULATION	31	474	3,094
AVERAGE HOUSEHOLD INCOME	\$84,223	\$78,995	\$72,566
TOTAL HOUSEHOLDS	9	183	1,253

No warranty or representation, express or implied, is made as to the accuracy of the information contained herein, and the same is submitted subject to errors, omissions, change of price, rental or other conditions, prior to sale, lease, or financing, or withdrawal without notice, and of any special listing conditions imposed by our principals no warranties or representations are made as to the condition of the property or any hazards contained therein are any to be implied.