

ELK CROSSING BUSINESS CENTER

1189 South Perry Street - Bldg A
Castle Rock, CO 80104



For leasing information, contact:
303.893.1886

Andrew Piepgras
303.882.6591
apiepgras@lpc.com

Lincoln

2000 S Colorado Blvd
Tower 3, Suite 825
Denver, CO 80222

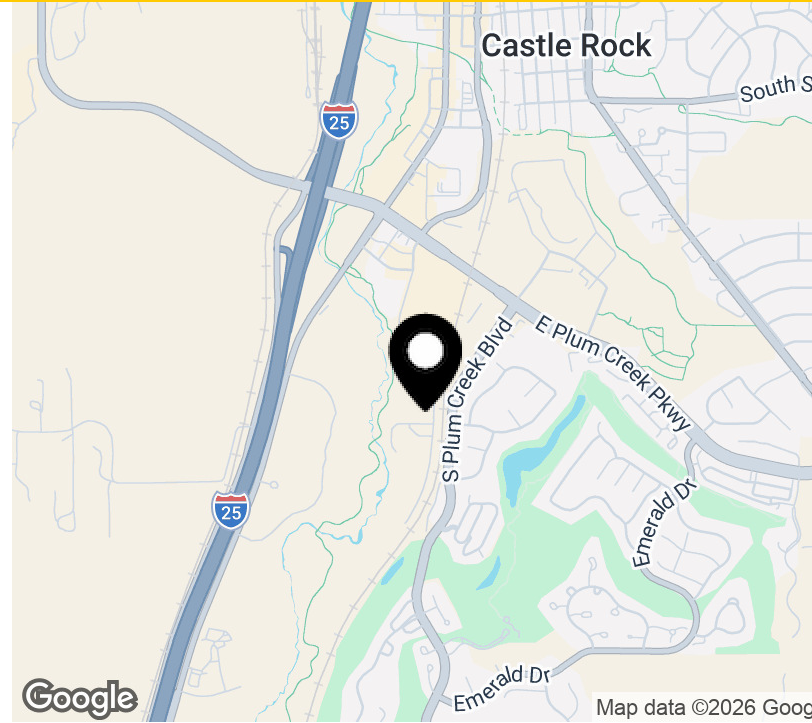
www.lpc.com

ELK CROSSING BUSINESS CENTER

Office For Lease

1,058 - 1,888 SF

1189 South Perry Street - Bldg A | Castle Rock, CO 80104



Property Highlights

- 3.70/1,000 well-lit, on-site surface parking
- Scenic views of Pikes Peak
- Close proximity to a variety of amenities including scenic trails, restaurants, banks and downtown Castle Rock
- Outstanding access to I-25

Availabilities

SF

Lease Rate

Date Available

Suite 100	1,058 SF	Negotiable	Now
Suite 250	1,888 SF	Negotiable	60 days



Andrew Piepgras

303.882.6591
apiepgras@lpc.com

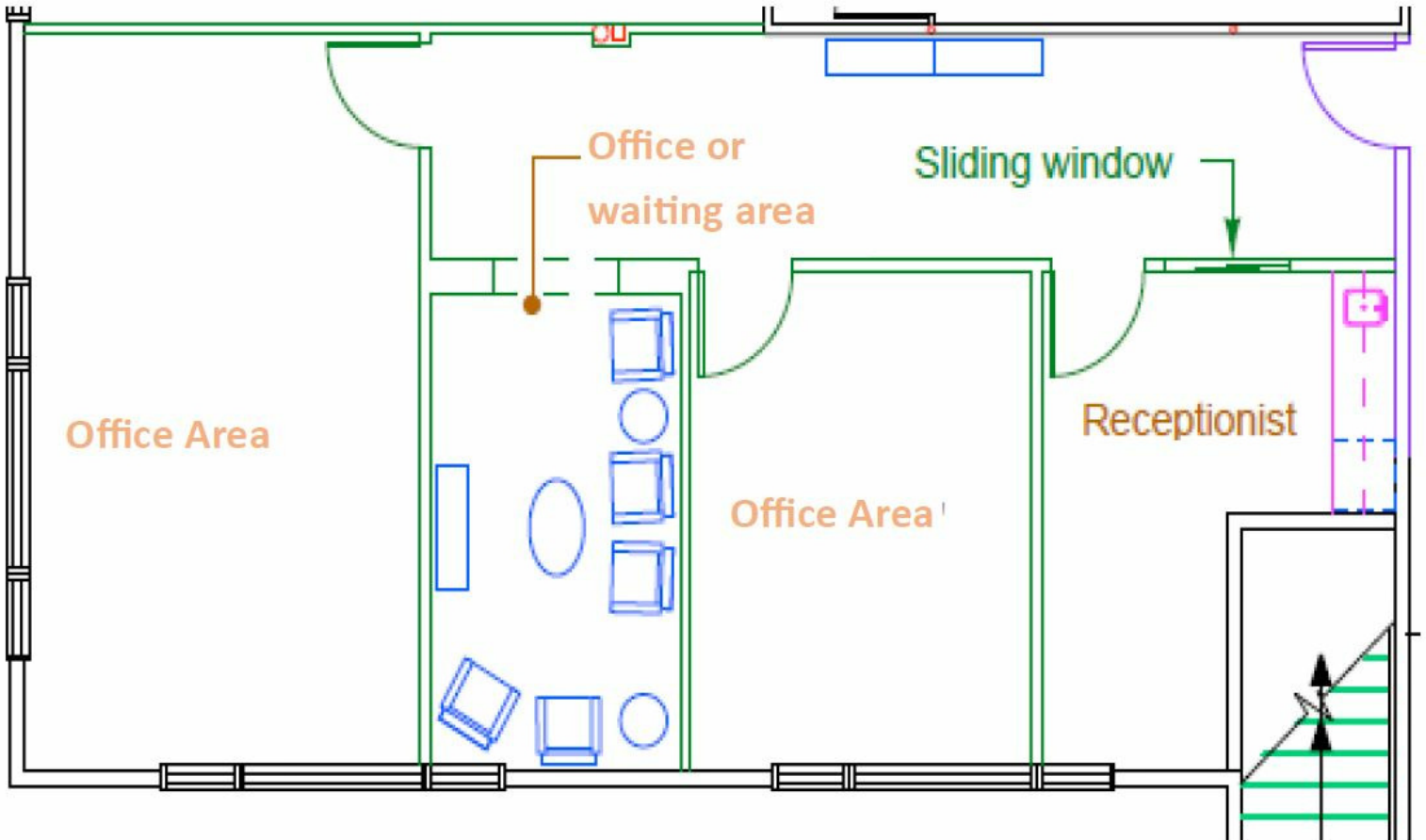
Lincoln

ELK CROSSING BUSINESS CENTER

1189 South Perry Street - Bldg A | Castle Rock, CO 80104

Suite 100

1,058 SF



Suite

Suite 100

Size

1,058 SF

Andrew Piepgras

303.882.6591
apiepgras@lpc.com

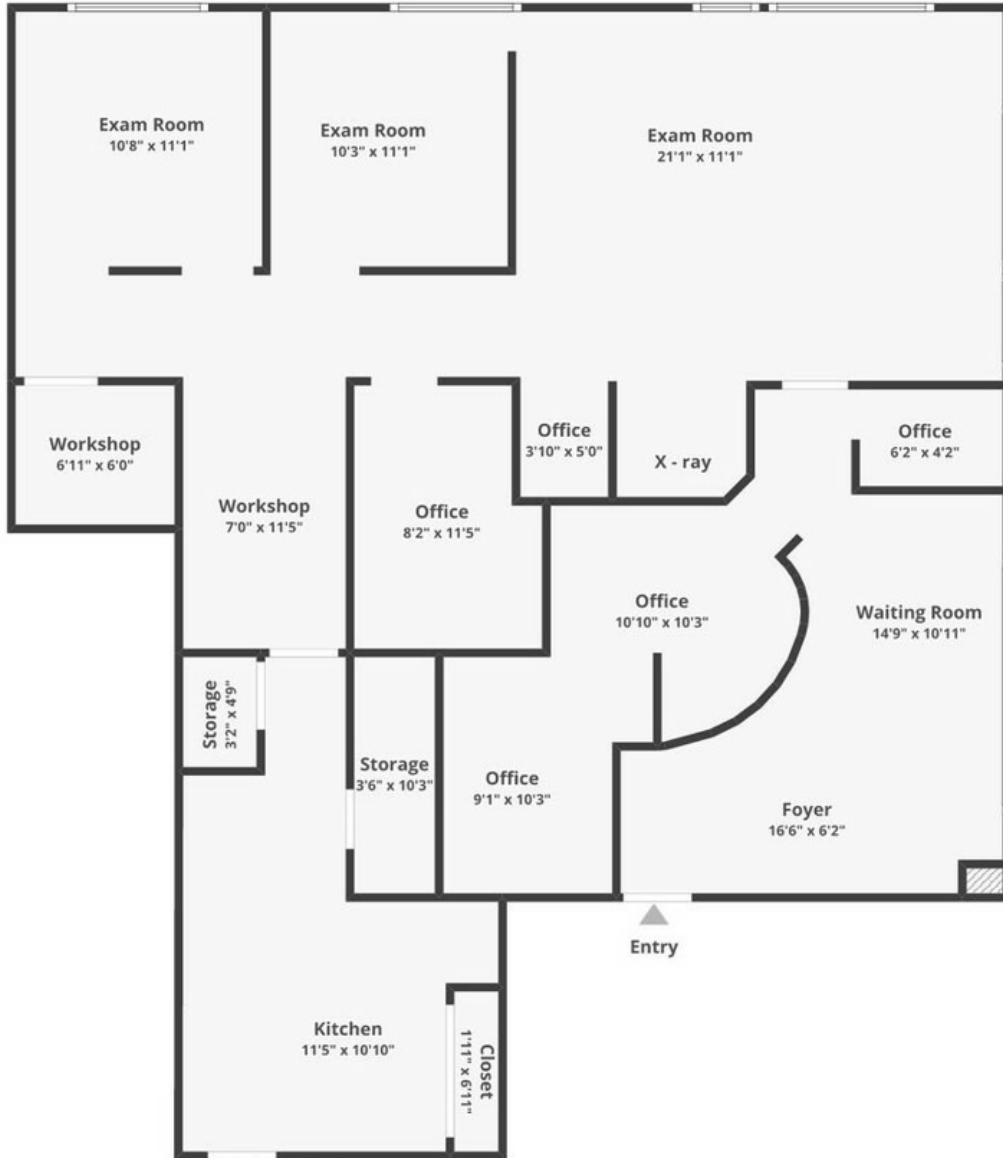
Lincoln

ELK CROSSING BUSINESS CENTER

1189 South Perry Street - Bldg A | Castle Rock, CO 80104

Suite 250

1,888 SF



Suite	Size	Description
Suite 250	1,888 SF	Existing dental office buildout

Andrew Piepgras

303.882.6591
apiepgras@lpc.com

Lincoln



ELK CROSSING BUSINESS CENTER

1189 South Perry Street - Bldg A
Castle Rock, CO 80104

For leasing information, contact:
303.893.1886

Andrew Piepgras
303.882.6591
apiepgras@lpc.com

Lincoln

2000 S Colorado Blvd
Tower 3, Suite 825
Denver, CO 80222

www.lpc.com