

AVAILABLE

6290 Old Warwick Road

6290 Old Warwick Road, Richmond, VA 23224



Exclusive Agent:

ROBERT PORTER III
(804) 521-1455
rep3@porterinc.com

HIGHLIGHTS

- Suite A: 3,550 SF Total (Approx 1,800 SF WH & 1,750 SF Office)
- Zoned Office-Service, Wide Range of Uses Allowed
- Warehouse Clear Height: 12'8"
- Overhead Door: 10' H X 12' W
- Proximate to Chippenham Parkway
- For Lease: \$10.50/SF NNN
- Available 3/1/26

4801 Radford Avenue | P.O. Box 6482
Richmond, VA 23230
www.porterinc.com
804-353-7994

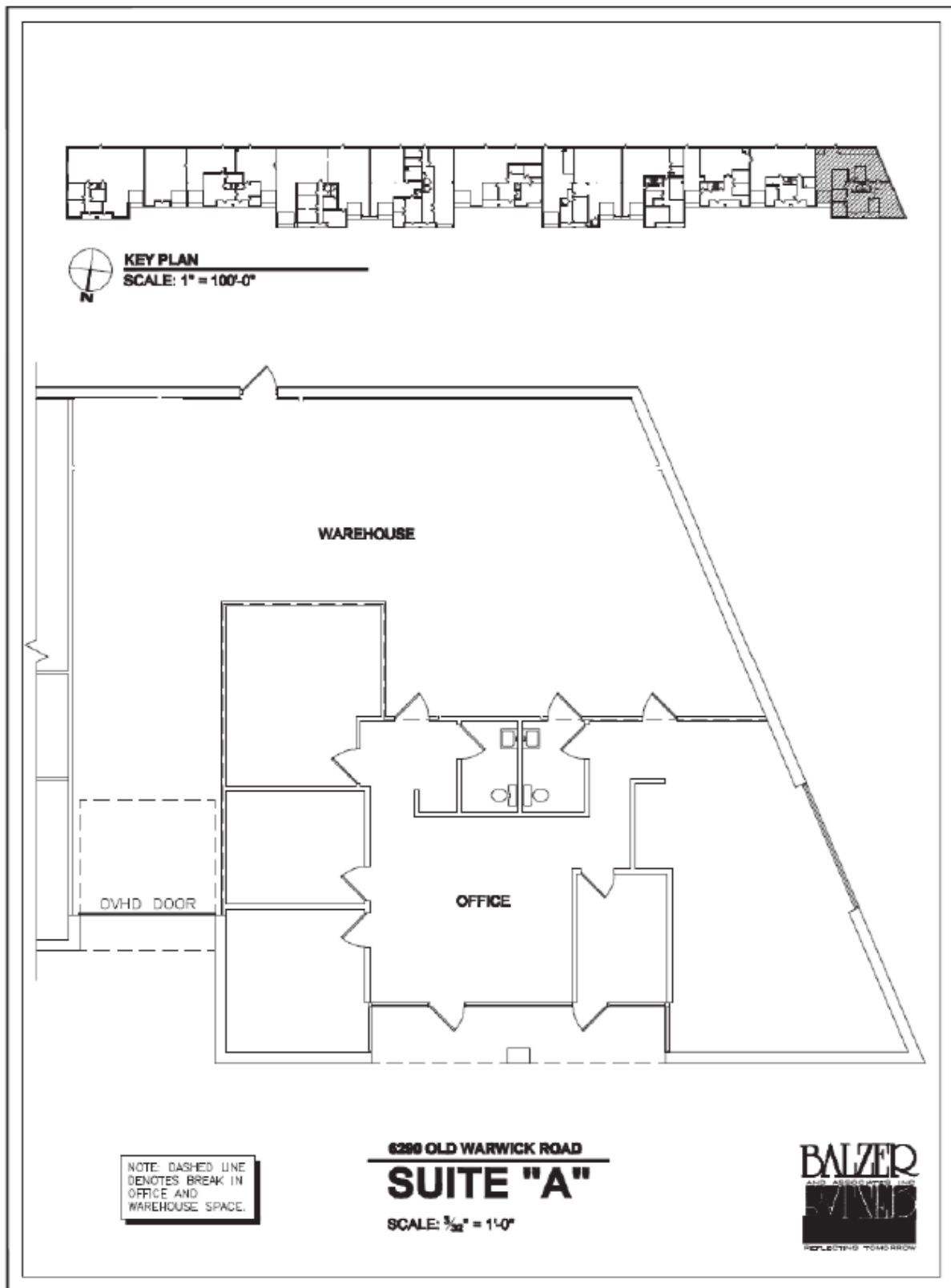
PORTER
R E A L T Y



This information has been prepared by Porter Realty Company, Inc. for marketing purposes only. No representation or warranty, expressed or implied, is made as to the accuracy of the foregoing information. Terms of sale or lease and availability are subject to change or withdrawal without notice.

SUITE A FLOOR PLAN

6290 Old Warwick Road | Richmond, VA 23224



Robert Porter III
(804) 521-1455
rep3@porterinc.com

Porter Realty Company, Inc. | 4801 Radford Avenue | P.O. Box 6482 | Richmond, VA 23230 | www.porterinc.com

This information has been prepared by Porter Realty Company, Inc. for marketing purposes only. No representation or warranty, expressed or implied, is made as to the accuracy of the foregoing information. Terms of sale or lease and availability are subject to change or withdrawal without notice.



SUITE A INTERIOR PHOTOS

6290 Old Warwick Road | Richmond, VA 23224



Robert Porter III
(804) 521-1455
rep3@porterinc.com

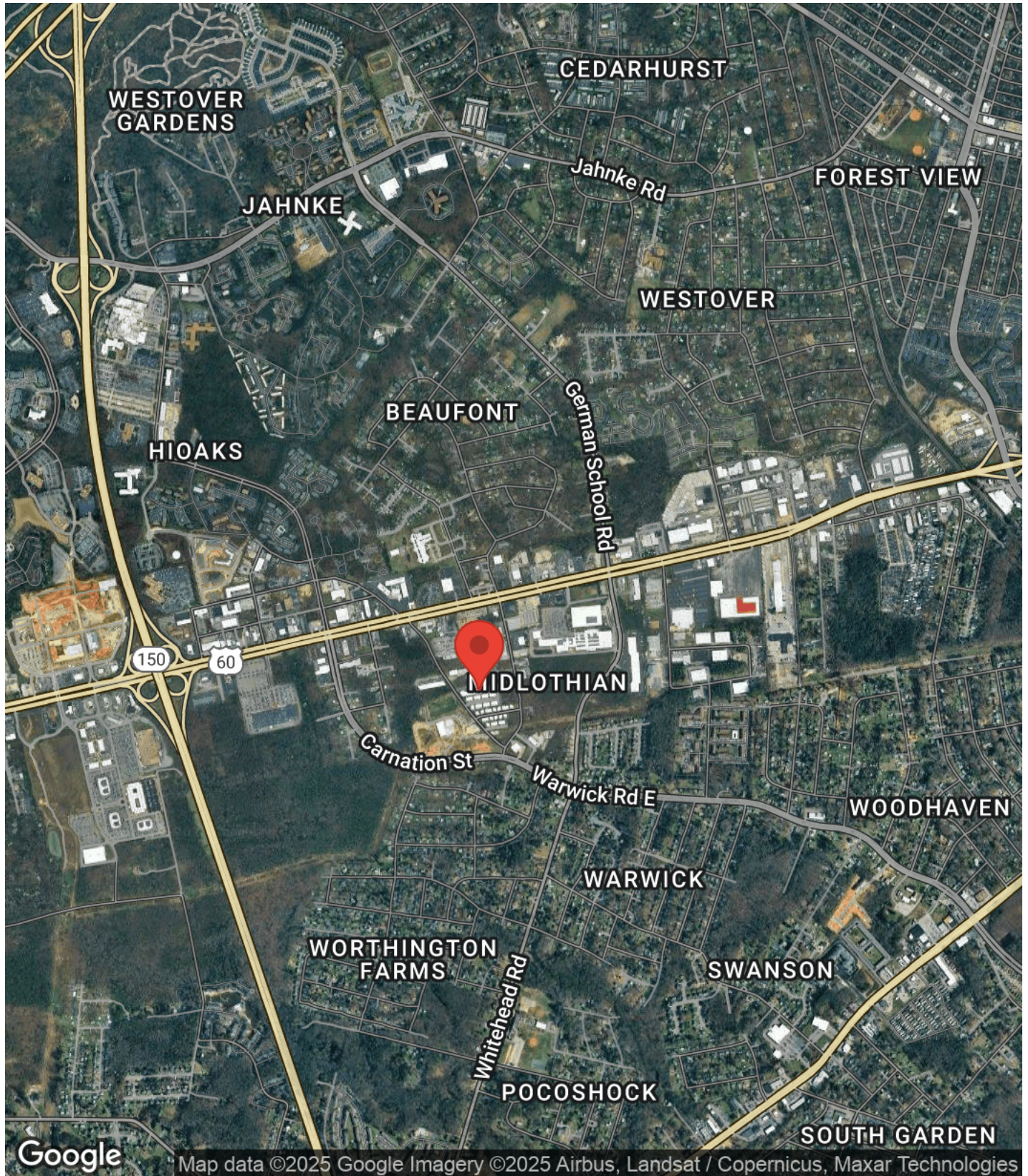


Porter Realty Company, Inc. | 4801 Radford Avenue | P.O. Box 6482 | Richmond, VA 23230 | www.porterinc.com

This information has been prepared by Porter Realty Company, Inc. for marketing purposes only. No representation or warranty, expressed or implied, is made as to the accuracy of the foregoing information. Terms of sale or lease and availability are subject to change or withdrawal without notice.

AERIAL MAP

6290 Old Warwick Road | Richmond, VA 23224



Robert Porter III
(804) 521-1455
rep3@porterinc.com

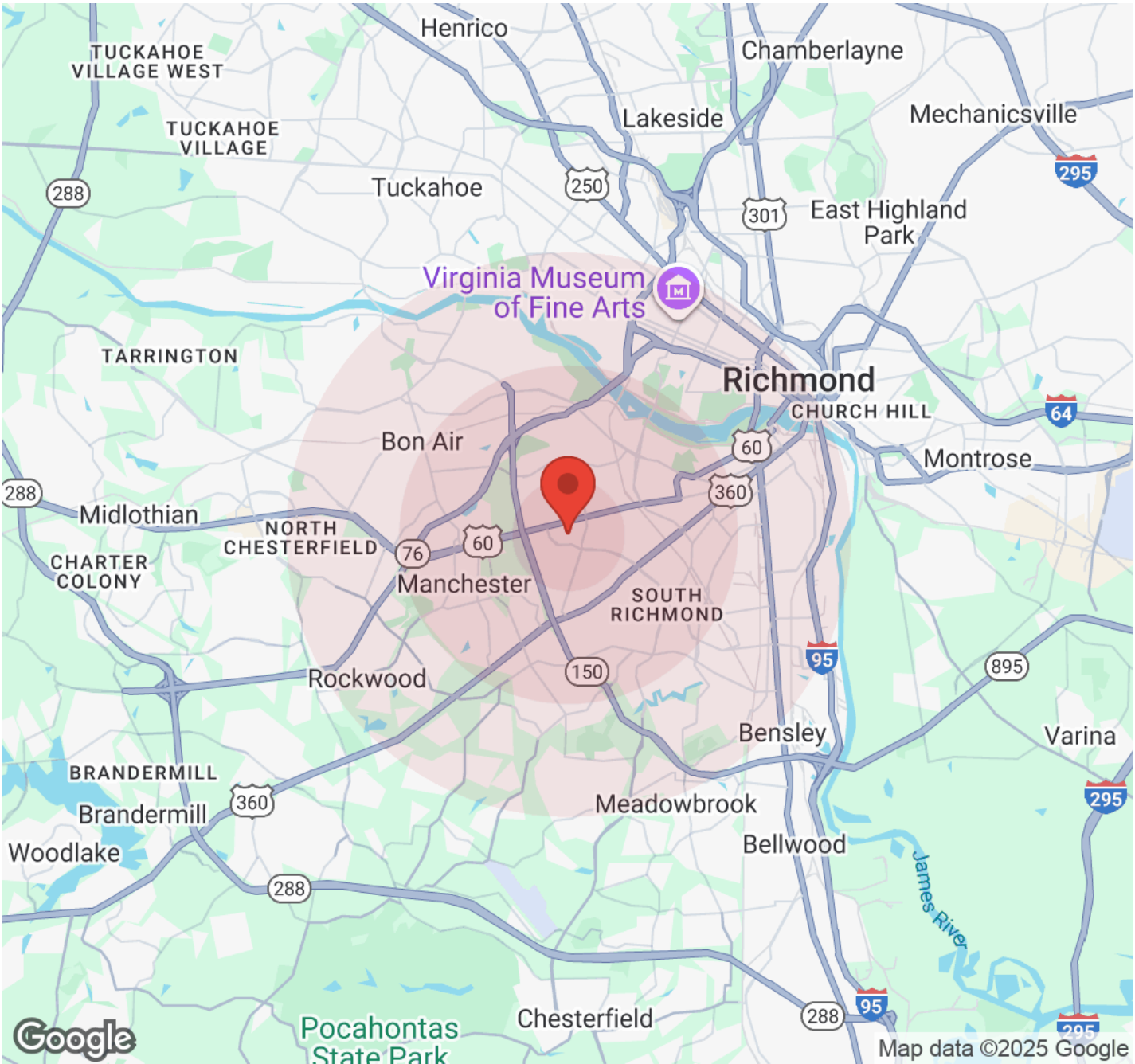


Porter Realty Company, Inc. | 4801 Radford Avenue | P.O. Box 6482 | Richmond, VA 23230 | www.porterinc.com

This information has been prepared by Porter Realty Company, Inc. for marketing purposes only. No representation or warranty, expressed or implied, is made as to the accuracy of the foregoing information. Terms of sale or lease and availability are subject to change or withdrawal without notice.

DEMOGRAPHICS

6290 Old Warwick Road | Richmond, VA 23224



Category	Sub-category	1 Mile	3 Miles	5 Miles
Population	Male	5,365	41,027	115,277
	Female	6,022	43,861	116,238
	Total Population	11,388	84,888	231,515
Age	Ages 0-14	2,284	16,322	37,195
	Ages 15-24	1,215	8,828	31,984
	Ages 25-54	4,773	36,639	102,667
	Ages 55-64	1,240	9,754	25,107
	Ages 65+	1,876	13,342	34,561

Robert Porter III
(804) 521-1455
rep3@porterinc.com

