

Reflections Office Park

5880 Sawmill Road, Dublin, OH

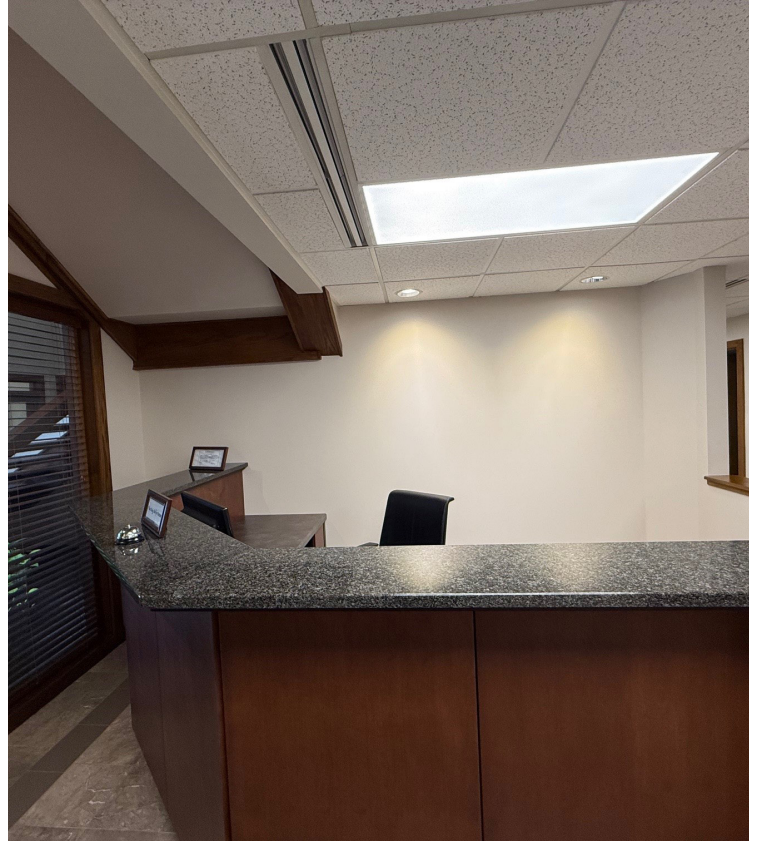


BUILDING FEATURES

- Efficient floor plan
- Great location
 - Scenic setting and landscaping surrounding a beautiful lake
 - Easy access to major roadways (Sawmill Road, SR-161, SR-33 and I-270)
- Highly visible office park surrounded by numerous amenities such as restaurants, retail stores, etc.
- Lease Rates - \$16.00 - \$16.50 FSG
- Hands-on and responsive ownership
- 1st Floor - 3,800 SF available
- 2nd Floor - 2,862 SF available



5880 SAWMILL ROAD

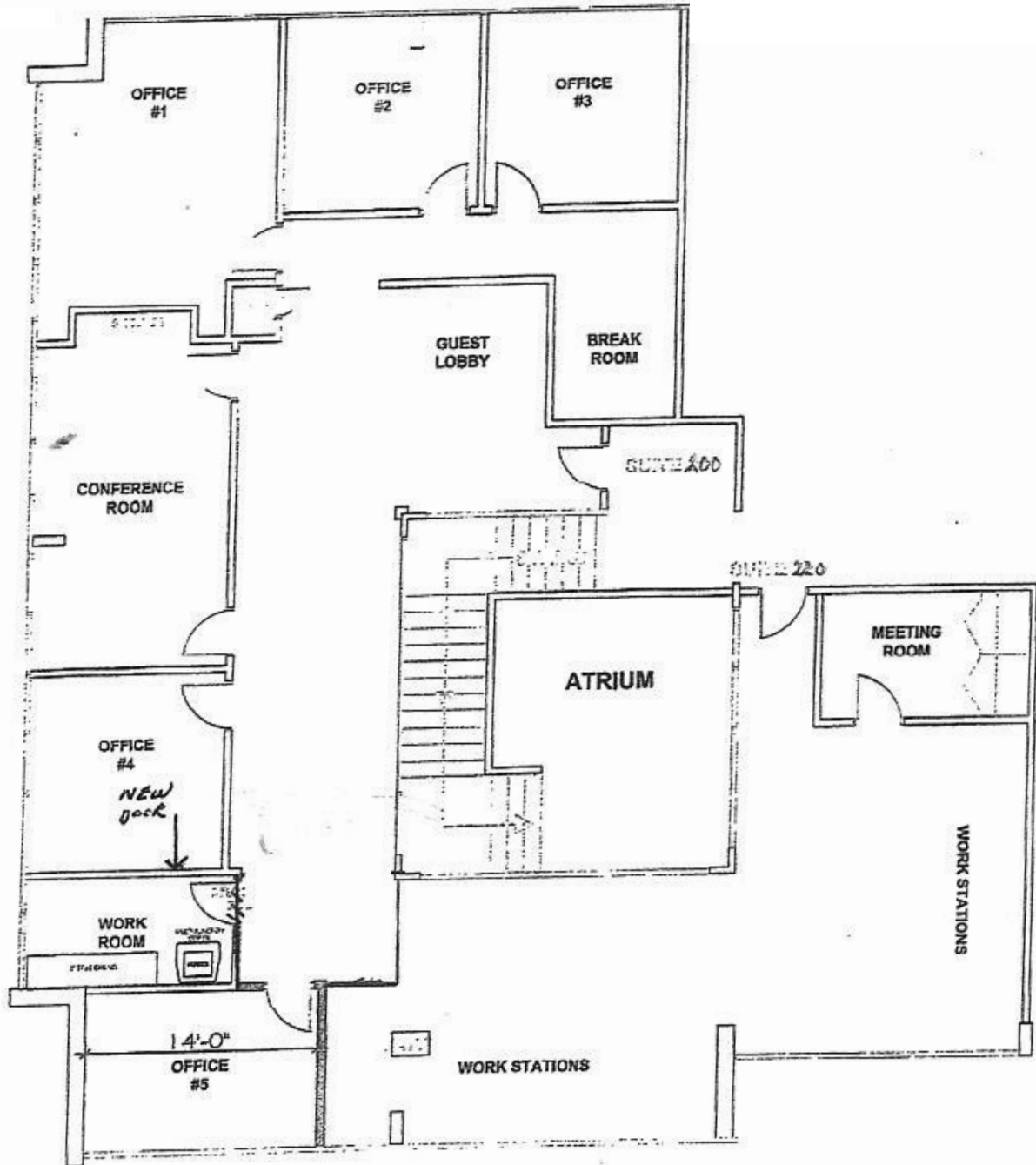


SECOND FLOOR

FOR LEASE: \$16.00 FSG

SUITE 220

2,222 SF



5880 SAWMILL ROAD



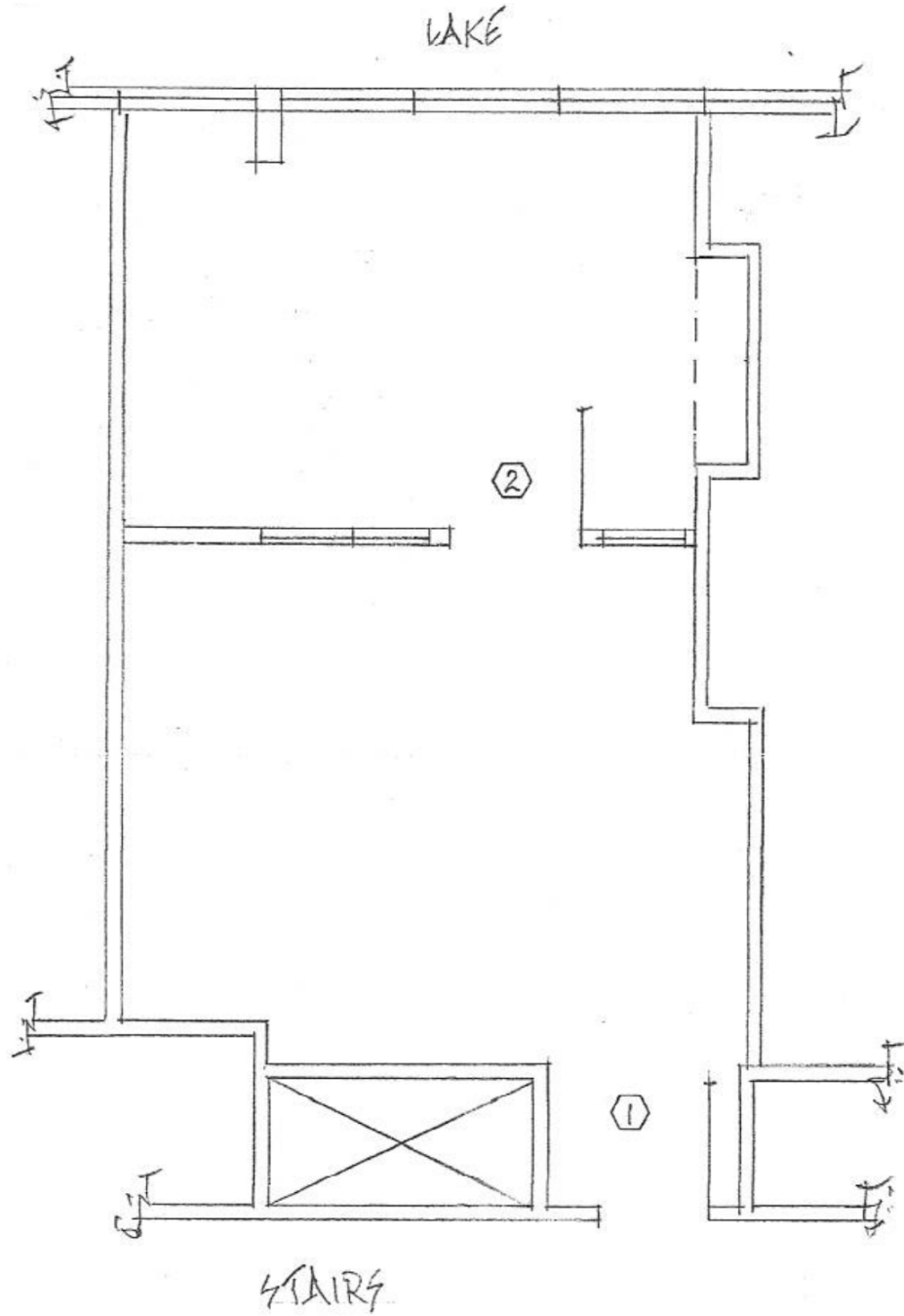
5880 SAWMILL ROAD

SECOND FLOOR

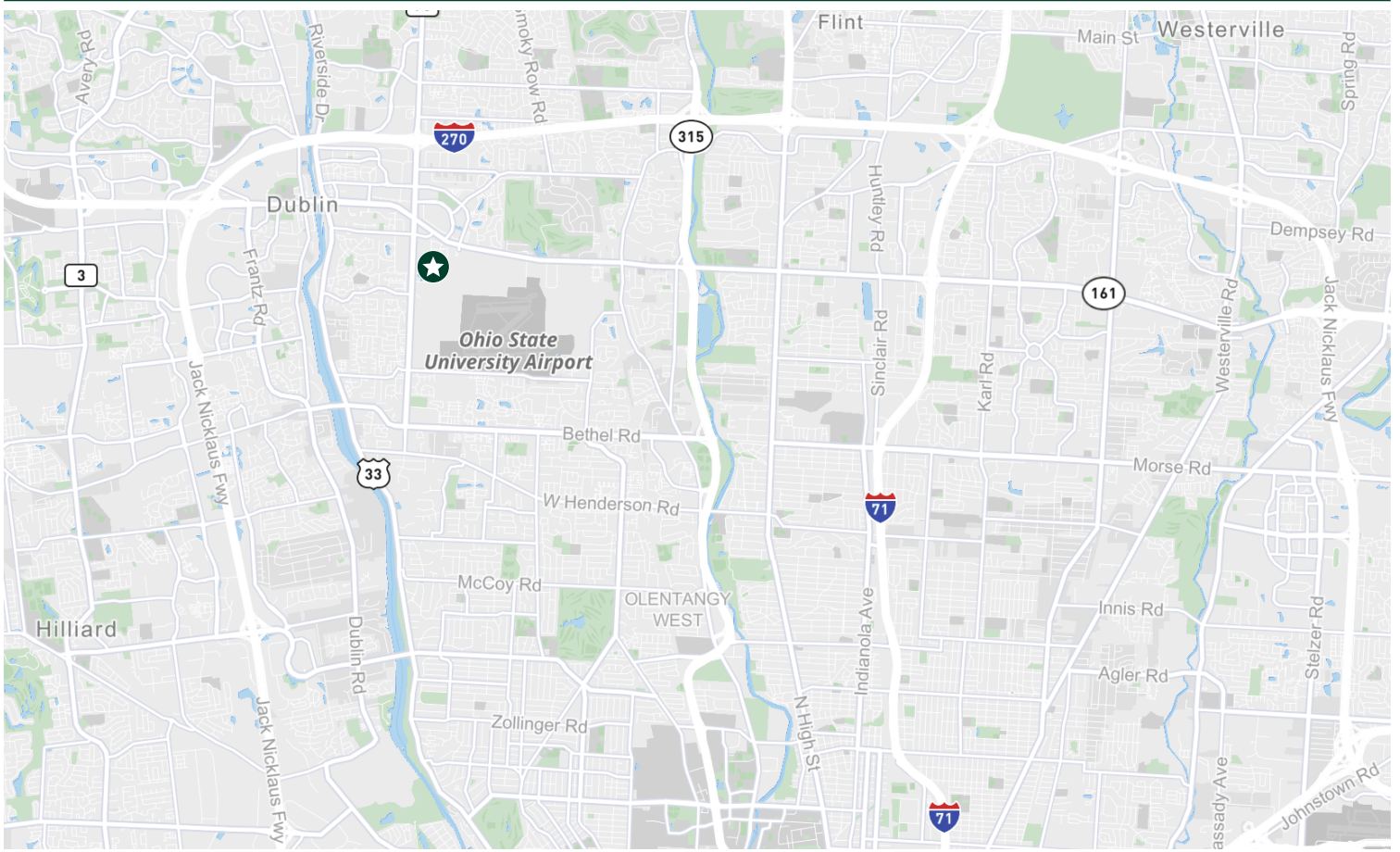
FOR LEASE: \$16.00 FSG

SUITE 240

640 SF



LOCATION





Contact Us

Don Matsanoff

First Vice President
+1 614 430 5000
don.matsanoff@cbre.com

CBRE

200 Civic Center Drive, 14th Floor
Columbus, OH 43215
+1 614 224 1492

© 2025 CBRE, Inc. All rights reserved. This information has been obtained from sources believed reliable but has not been verified for accuracy or completeness. CBRE, Inc. makes no guarantee, representation or warranty and accepts no responsibility or liability as to the accuracy, completeness, or reliability of the information contained herein. You should conduct a careful, independent investigation of the property and verify all information. Any reliance on this information is solely at your own risk. CBRE and the CBRE logo are service marks of CBRE, Inc. All other marks displayed on this document are the property of their respective owners, and the use of such marks does not imply any affiliation with or endorsement of CBRE. Photos herein are the property of their respective owners. Use of these images without the express written consent of the owner is prohibited.