

FOR SALE

7055 Interstate Island Road

Syracuse, New York 13209



3.51± Acres of Industrial Land

Property Highlights

- Well located in a professional industrial park
- Gas, water, electric and municipal sewer at site
- Zoned "Industrial A" (Town of Van Buren)
- Close proximity and easy access to I-690 and I-90 (NYS Thruway)
- Highly visible from I-690
- Flat and cleared property

Destination	Distance	Drive Time
I-690	.60 Miles	1 Minutes
I-90	1.50 Miles	3 Minutes
I-81	8.30 Miles	10 Minutes
I-481	14.30 Miles	15 Minutes

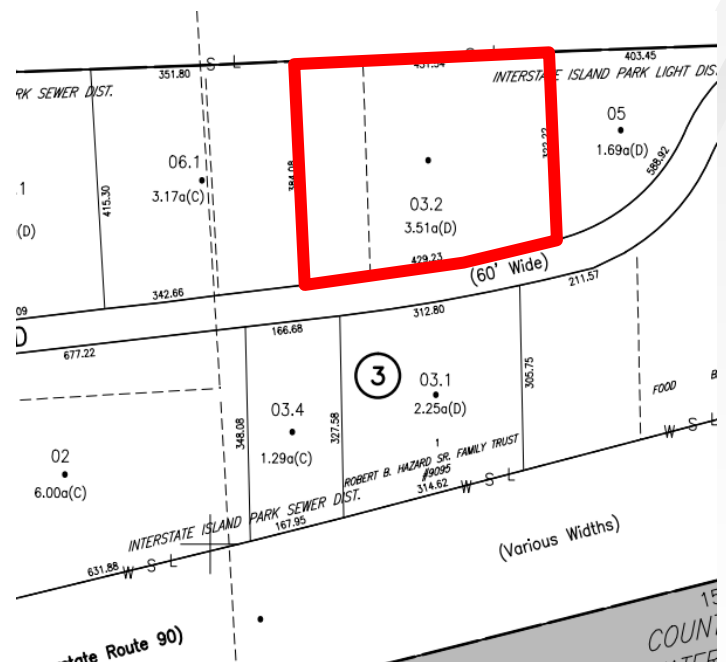
Source: Google Maps

Contact

GARY G. COTTET
 Associate Real Estate Broker
 +1 315 445 8529
 gcottet@pyramidbrokerage.com

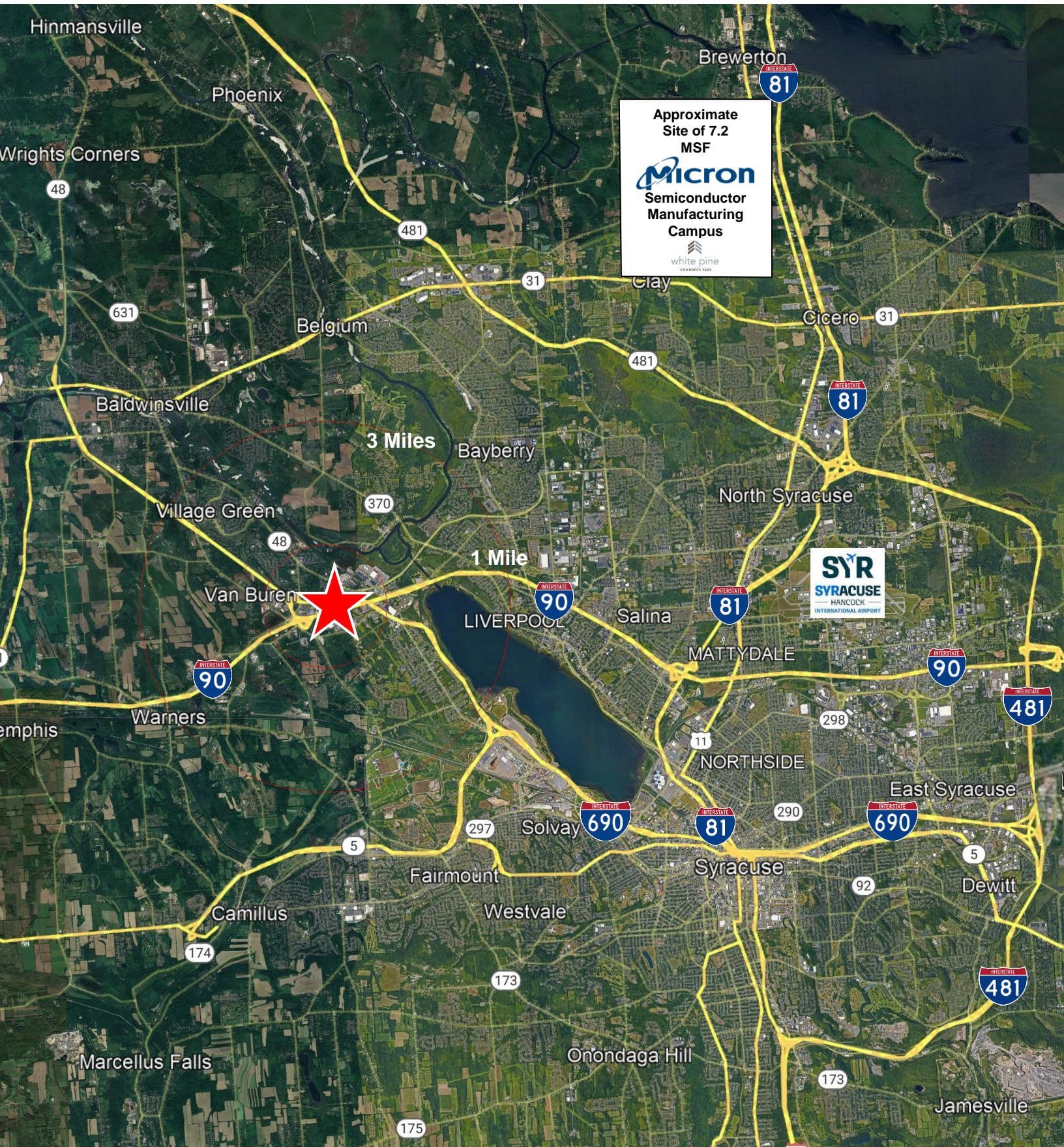
MARK AUSTIN
 Real Estate Salesperson
 +1 315 445 8538
 maustin@pyramidbrokerage.com

5845 Widewaters Pkwy, Suite 200
 East Syracuse, New York 13057
 +1 315 445 1030
 pyramidbrokerage.com



FOR SALE

7055 Interstate Island Road | Syracuse, New York



Approximate Site of 7.2 MSF
Micron
Semiconductor Manufacturing Campus
white pine
CONSTRUCTION PART

