

PRIME OFFICE SPACE FOR LEASE

7488 SHORELINE DRIVE, SUITE A-5 | STOCKTON, CA



LISTING DATA

- 7488 Shoreline has one (1) ground floor suite available of approximately 1,319± SF (Suite A-5)
- Well maintained office building situated in a professional complex in North Stockton
- Common area restrooms
- Quality brick exterior with extensive glass line
- Ample parking (4 spaces per 1,000± SF)
- Nice, quiet location in North Stockton
- Exposure to Interstate 5
- Nicely improved

ECONOMIC DATA

LEASE RATE: \$1.35 PSF / Modified Gross / Monthly



Wendy Coddington, SIOR
BRE #00592566
wcoddington@lee-associates.com
D 209.983.6830

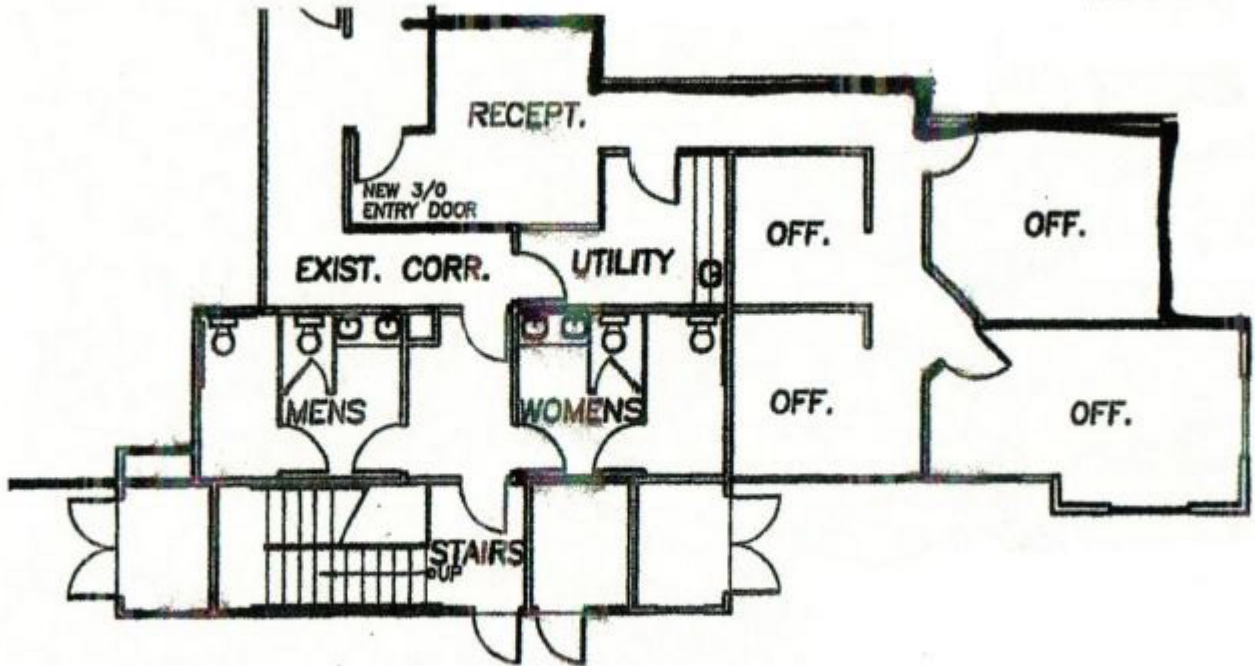
Logan Tingey
BRE #02152043
ltingey@lee-associates.com
C 341.206.0882

All information furnished regarding property for sale, rental or financing is from sources deemed reliable, but no warranty or representation is made to the accuracy thereof and same is submitted to errors, omissions, change of price, rental or other conditions prior to sale, lease or financing or withdrawal without notice. No liability of any kind is to be imposed on the broker herein.

PRIME OFFICE SPACE FOR LEASE

7488 SHORELINE DRIVE, SUITE A-5 | STOCKTON, CA

SUITE A-5 FLOORPLAN



Wendy Coddington, SIOR
BRE #00592566
wcoddington@lee-associates.com
D 209.983.6830

Logan Tingey
BRE #02152043
ltingey@lee-associates.com
C 341.206.0882

All information furnished regarding property for sale, rental or financing is from sources deemed reliable, but no warranty or representation is made to the accuracy thereof and same is submitted to errors, omissions, change of price, rental or other conditions prior to sale, lease or financing or withdrawal without notice. No liability of any kind is to be imposed on the broker herein.

PRIME OFFICE SPACE FOR LEASE

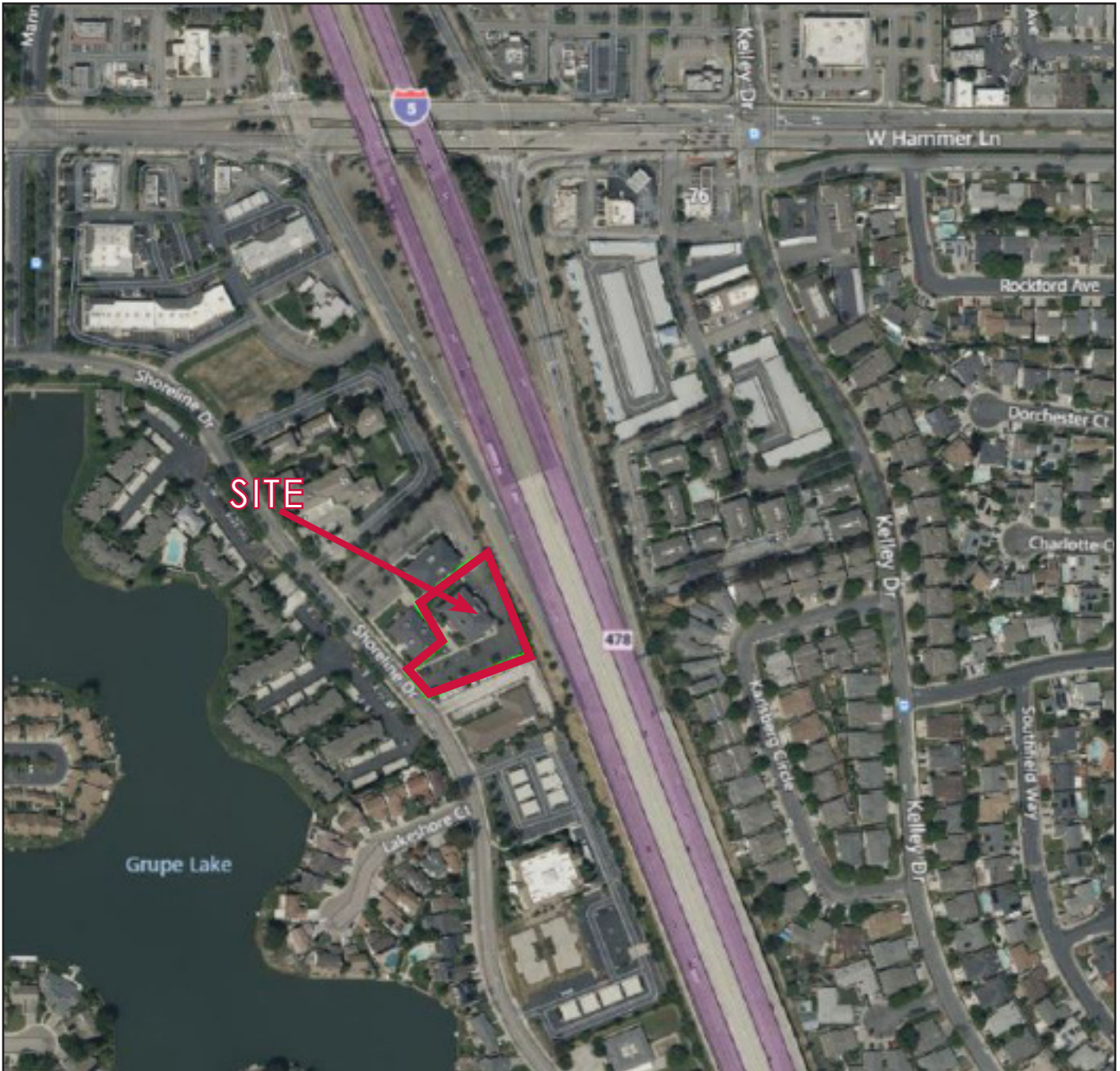


LEE &
ASSOCIATES

COMMERCIAL REAL ESTATE SERVICES

7488 SHORELINE DRIVE, SUITE A-5 | STOCKTON, CA

AERIAL



Wendy Coddington, SIOR
BRE #00592566
wcoddington@lee-associates.com
D 209.983.6830

Logan Tingey
BRE #02152043
ltingey@lee-associates.com
C 341.206.0882

All information furnished regarding property for sale, rental or financing is from sources deemed reliable, but no warranty or representation is made to the accuracy thereof and same is submitted to errors, omissions, change of price, rental or other conditions prior to sale, lease or financing or withdrawal without notice. No liability of any kind is to be imposed on the broker herein.