

57

NORTH NINTH STREET WILLIAMSBURG, BROOKLYN

Between Wythe & Kent Avenues

RETAIL/RESTAURANT FOR LEASE

APPROXIMATE SIZE

Ground Floor: 5,000 SF
Second Floor: 2,500 SF + 2,500 SF Outdoor Terrace
Third Floor: 2,500 SF + 2,500 SF Rooftop

ASKING RENT

~~Ground Floor: \$50,000/Month~~ Reduced

Ground Floor: \$42,000/Month
Second Floor: \$20,000/Month
Third Floor: \$12,500/Month

| POSSESSION | TERM | FRONTAGE |
|------------|-------------|----------|
| Arranged | 10-15 Years | 100 FT |

COMMENTS

- Brand-new luxury development
- Floors can be leased together or separately
- Located in a strong retail and restaurant corridor
- Beautiful outdoor terrace space available on second floor
- Ideal for restaurants, specialty fitness/gym, or high-end retailers

NEIGHBORS

Laser Wolf • The Backyard Bar • Brooklyn Bowl
• The Whiskey Brooklyn • Mable's • Suitsupply
• Ganni • Skin Laundry • Sugarfish • Glossier

TRANSPORTATION



JAMES FAMULARO

President
646.658.7373
jfamularo@meridiancapital.com

JACOB MAYER

Associate
212.468.5926
jmayer@meridiancapital.com



THIRD FLOOR

SECOND FLOOR

GROUND FLOOR



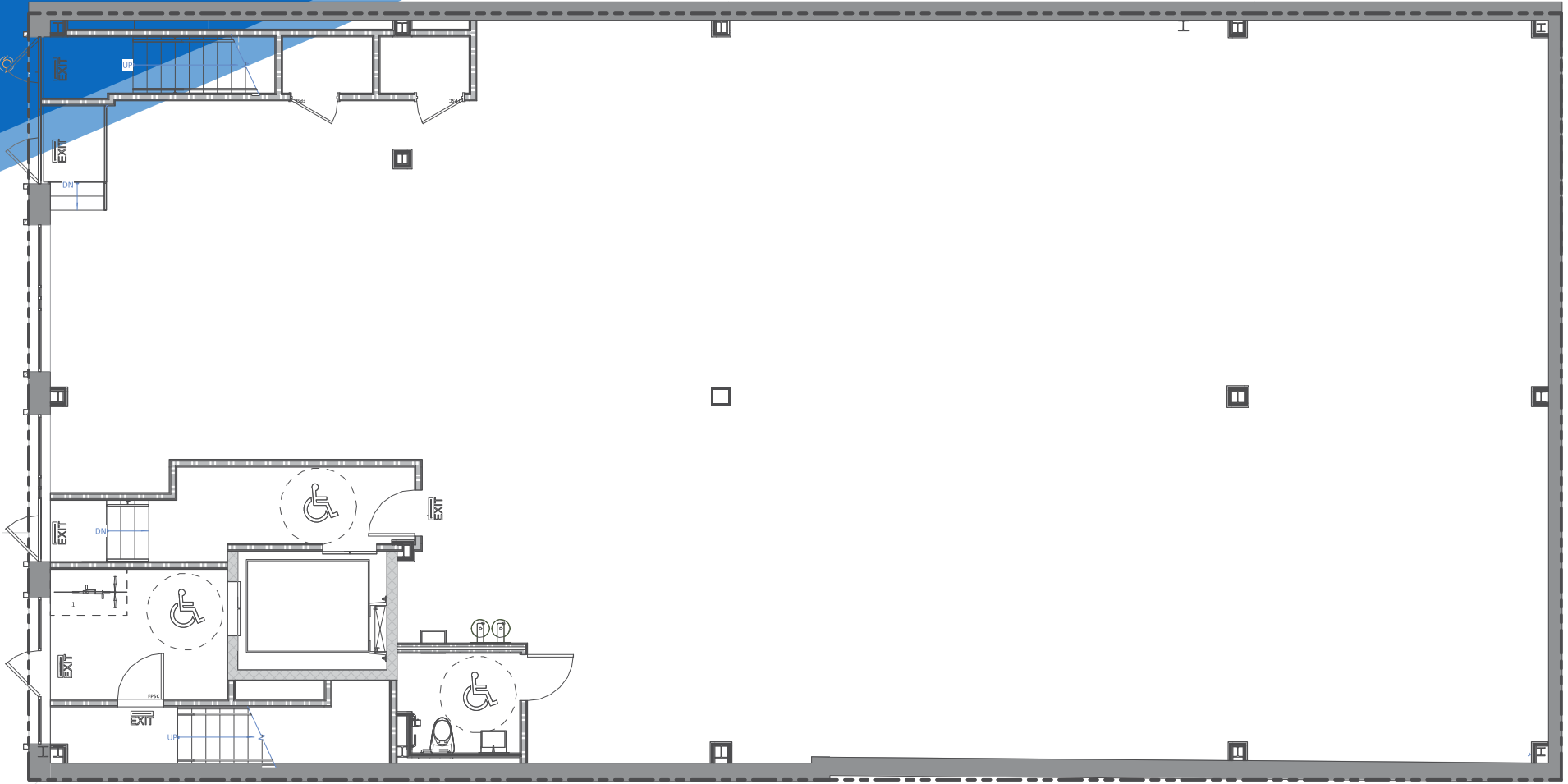
All information supplied is from sources deemed reliable and is furnished subject to errors, omissions, modifications, removal of the listing from sale or lease, and to any listing conditions, including the rates and manner of payment of commissions for particular offerings imposed by Meridian Capital Group. This information may include estimates and projections prepared by Meridian Capital Group with respect to future events, and these future events may or may not actually occur. Such estimates and projections reflect various assumptions concerning anticipated results. While Meridian Capital Group believes these assumptions are reasonable, there can be no assurance that any of these estimates and projections will be correct. Therefore, actual results may vary materially from these estimates and projections. Any square footage dimensions set forth are approximate.

57 NORTH NINTH STREET

WILLIAMSBURG, BROOKLYN | Between Wythe and Kent Avenues

RETAIL/RESTAURANT FOR LEASE

FLOOR PLAN | GROUND FLOOR



JAMES FAMULARO

President
646.658.7373
jfamularo@meridiancapital.com

JACOB MAYER

Associate
212.468.5926
jmayer@meridiancapital.com

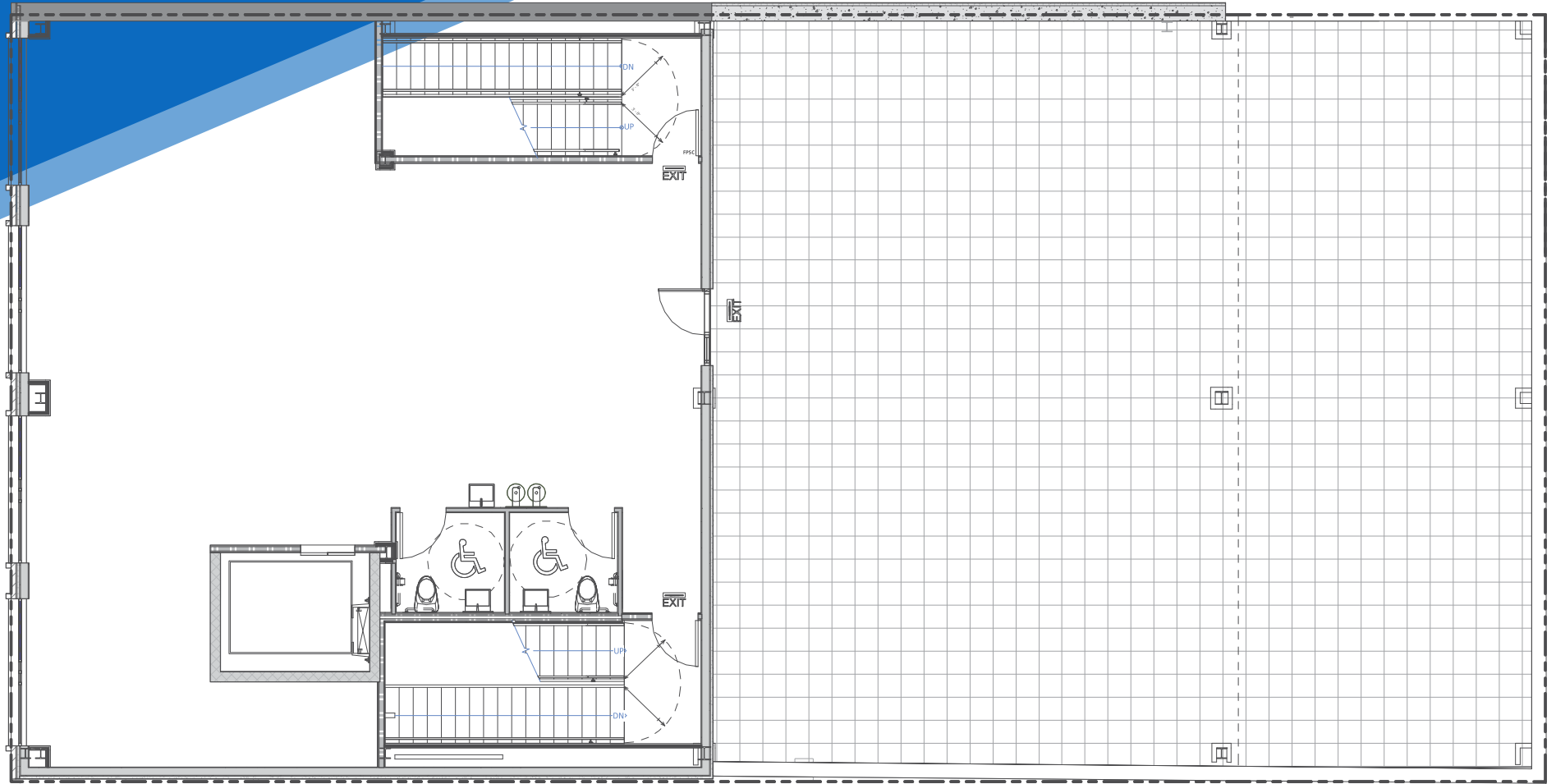


All information supplied is from sources deemed reliable and is furnished subject to errors, omissions, modifications, removal of the listing from sale or lease, and to any listing conditions, including the rates and manner of payment of commissions for particular offerings imposed by Meridian Capital Group. This information may include estimates and projections prepared by Meridian Capital Group with respect to future events, and these future events may or may not actually occur. Such estimates and projections reflect various assumptions concerning anticipated results. While Meridian Capital Group believes these assumptions are reasonable, there can be no assurance that any of these estimates and projections will be correct. Therefore, actual results may vary materially from these estimates and projections. Any square footage dimensions set forth are approximate.

57 NORTH NINTH STREET
WILLIAMSBURG, BROOKLYN | Between Wythe and Kent Avenues

RETAIL/RESTAURANT FOR LEASE

FLOOR PLAN | SECOND FLOOR



JAMES FAMULARO

President
646.658.7373
jfamularo@meridiancapital.com

JACOB MAYER

Associate
212.468.5926
jmayer@meridiancapital.com



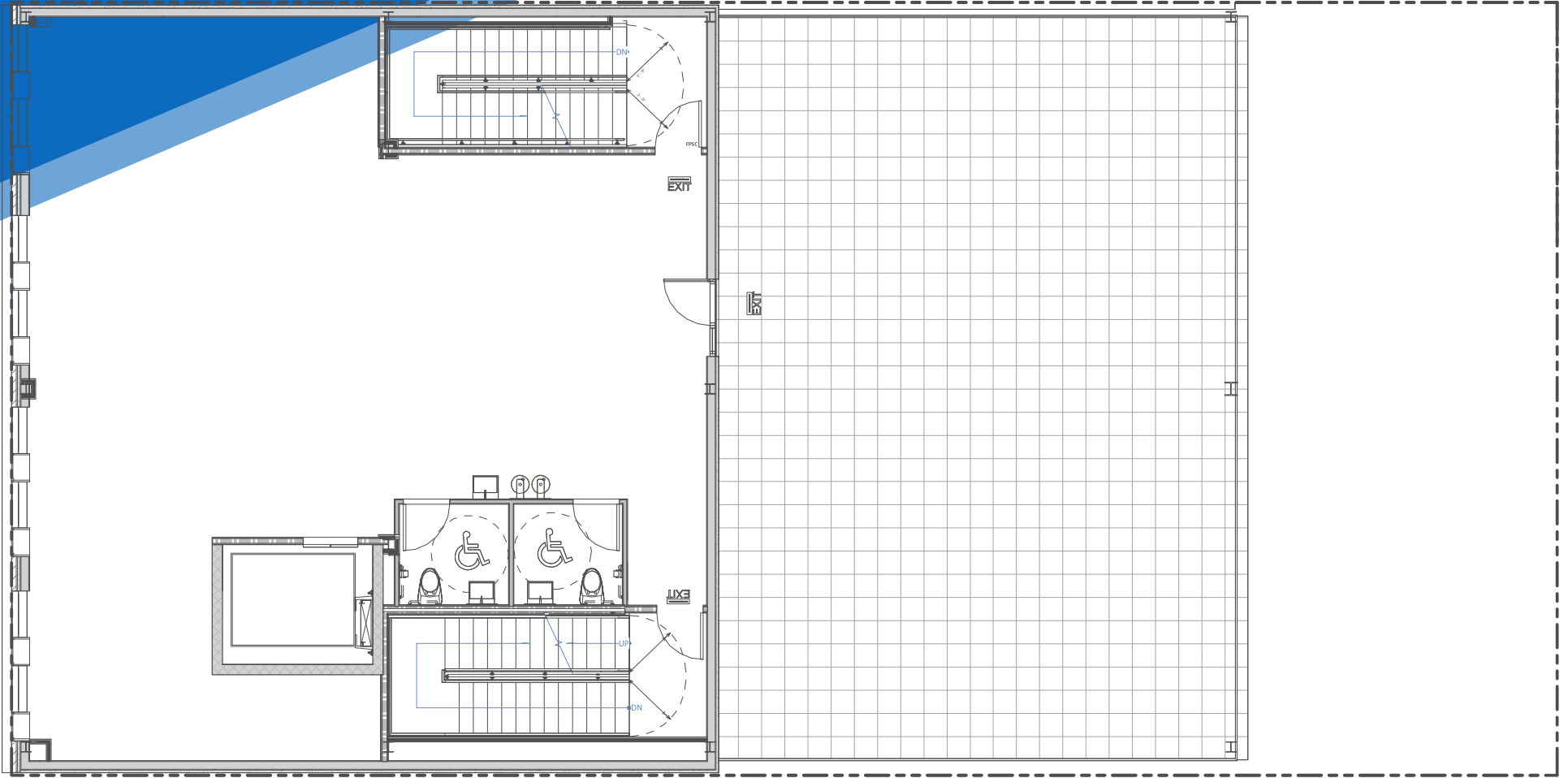
All information supplied is from sources deemed reliable and is furnished subject to errors, omissions, modifications, removal of the listing from sale or lease, and to any listing conditions, including the rates and manner of payment of commissions for particular offerings imposed by Meridian Capital Group. This information may include estimates and projections prepared by Meridian Capital Group with respect to future events, and these future events may or may not actually occur. Such estimates and projections reflect various assumptions concerning anticipated results. While Meridian Capital Group believes these assumptions are reasonable, there can be no assurance that any of these estimates and projections will be correct. Therefore, actual results may vary materially from these estimates and projections. Any square footage dimensions set forth are approximate.

57 NORTH NINTH STREET

WILLIAMSBURG, BROOKLYN | Between Wythe and Kent Avenues

RETAIL/RESTAURANT FOR LEASE

FLOOR PLAN | THIRD FLOOR



JAMES FAMULARO

President
646.658.7373
jfamularo@meridiancapital.com

JACOB MAYER

Associate
212.468.5926
jmayer@meridiancapital.com

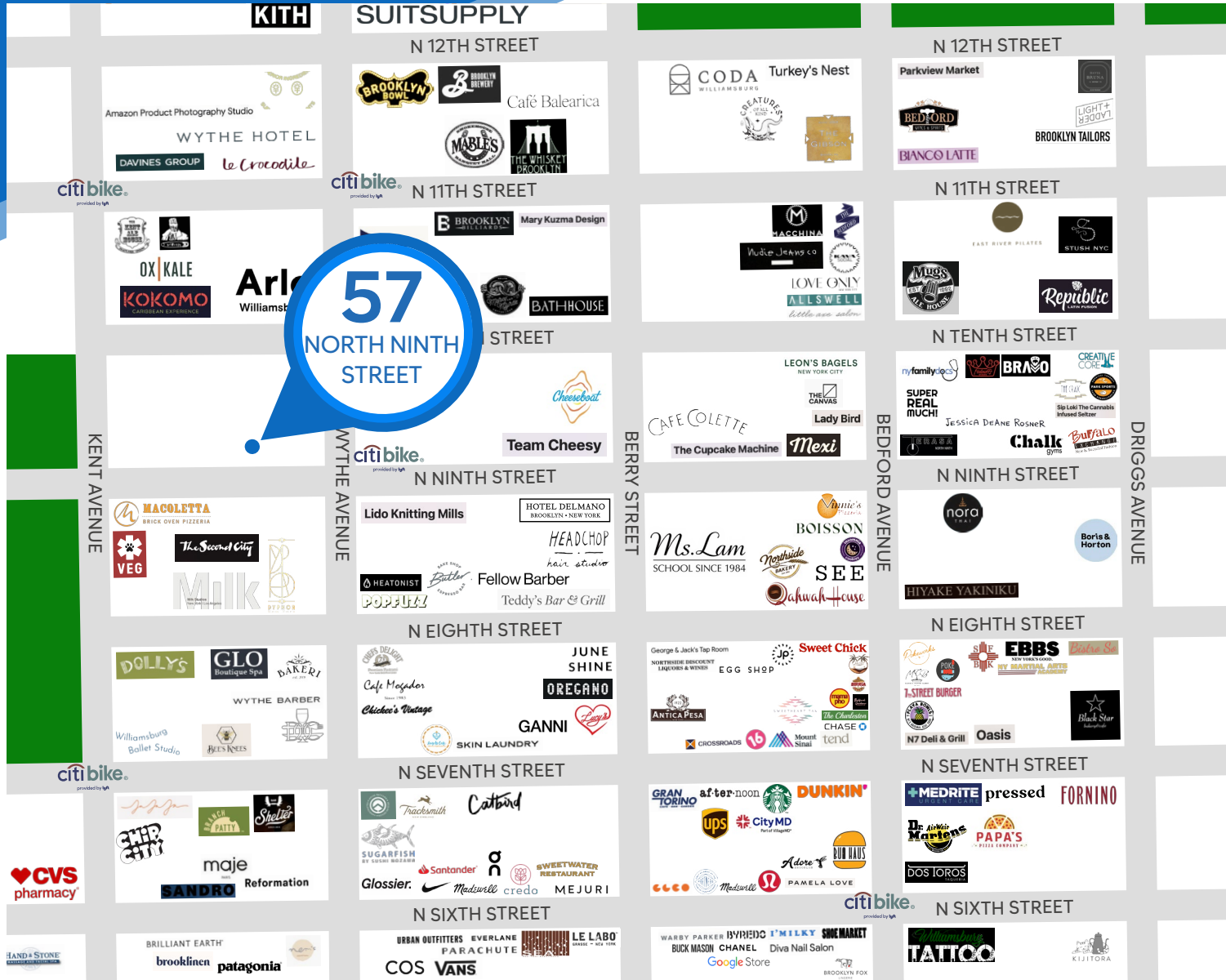


All information supplied is from sources deemed reliable and is furnished subject to errors, omissions, modifications, removal of the listing from sale or lease, and to any listing conditions, including the rates and manner of payment of commissions for particular offerings imposed by Meridian Capital Group. This information may include estimates and projections prepared by Meridian Capital Group with respect to future events, and these future events may or may not actually occur. Such estimates and projections reflect various assumptions concerning anticipated results. While Meridian Capital Group believes these assumptions are reasonable, there can be no assurance that any of these estimates and projections will be correct. Therefore, actual results may vary materially from these estimates and projections. Any square footage dimensions set forth are approximate.

57 NORTH NINTH STREET

WILLIAMSBURG, BROOKLYN | Between Wythe and Kent Avenues

RETAIL/RESTAURANT FOR LEASE



NEIGHBORS

JAMES FAMULARO

President
646.658.7373
jfamularo@meridiancapital.com

JACOB MAYER

Associate
212.468.5926
jmayer@meridiancapital.com



All information supplied is from sources deemed reliable and is furnished subject to errors, omissions, modifications, removal of the listing from sale or lease, and to any listing conditions, including the rates and manner of payment of commissions for particular offerings imposed by Meridian Capital Group. This information may include estimates and projections prepared by Meridian Capital Group with respect to future events, and these future events may or may not actually occur. Such estimates and projections reflect various assumptions concerning anticipated results. While Meridian Capital Group believes these assumptions are reasonable, there can be no assurance that any of these estimates and projections will be correct. Therefore, actual results may vary materially from these estimates and projections. Any square footage dimensions set forth are approximate.