



35 West Broad Street

Stamford, Connecticut

Office/Medical Commercial Condo For Sale Between Stamford Hospital and UCONN Stamford

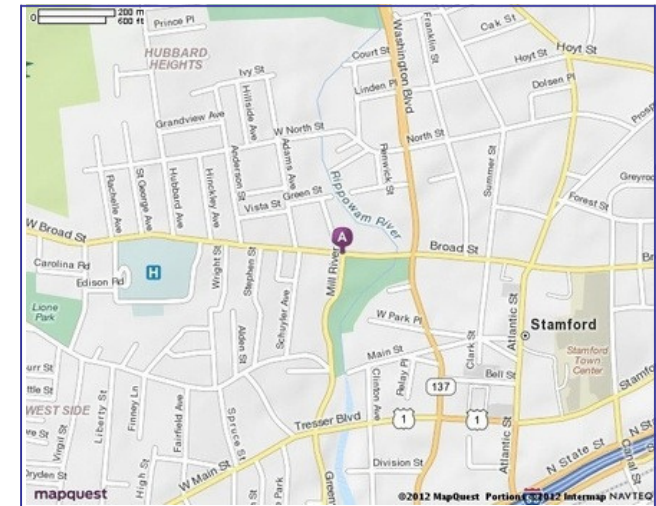


Your paragraph text

Specifications

- Size:** 1,282 Square Feet
Unit: Commercial Condo 35 West Broad Street, Unit 1
Sale Price: \$550,000.00
Common Charge: \$413.71 Per Month
Utilities: Electric, and Water
Taxes: \$3,687.04 City of Stamford
Parking: 6 Dedicated Covered Parking Spaces -
100+ Residential Parking Generally
Available Between 7AM thru 6PM

Map



Contact Exclusive Agent:

Chris Mailler

203-984-1822

chris@pyramidregroup.com

Jack Daniel

203-399-4366

jdaniel@pyramidregroup.com

Pyramid Real Estate Group

500 Summer Street #502, Stamford, CT 06901

(203) 348-8566 Fax (203) 358-9763

2025PREM, Inc. The information above has been obtained from sources believed reliable. While we do not doubt its accuracy, we have not verified it and make no guarantee, warranty or representation about it. It is your responsibility to independently confirm its accuracy and completeness. Any projections, opinions, assumptions or statements used are for example only and do not represent the current or future performance of the property. The value of this transaction to you depends on tax and other factors which should be evaluated by your tax, financial and legal advisors. You and your advisors should conduct a careful, independent investigation of the property to determine to your satisfaction the suitability of the property for your needs.

PYRAMID
Real Estate Group

Brokerage Consulting Management Services Construction

www.pyramidregroup.com



Contact Exclusive Agent:

Chris Mailler
203-984-1822
chris@pyramidregroup.com

Jack Daniel
203-399-4366
jdaniel@pyramidregroup.com

PYRAMID

Pyramid Real Estate Group 500 Summer Street #502, Stamford, CT 06901 (203) 348-8566
The information above has been obtained from sources believed reliable. While we do not doubt its accuracy, we have not verified it and make no guarantee, warranty or representation about it. It is your responsibility to independently confirm its accuracy and completeness. Any projections, opinions, assumptions or statements used are for example only and do not represent the current or future performance of the property. The value of this transaction to you depends on tax and other factors which should be evaluated by your tax, financial and legal advisors. You and your advisors should conduct a careful, independent investigation of the property to determine to your satisfaction the suitability of the property for your needs.

Brokerage Consulting Management Services Construction www.pyramidregroup.com



Contact Exclusive Agent:

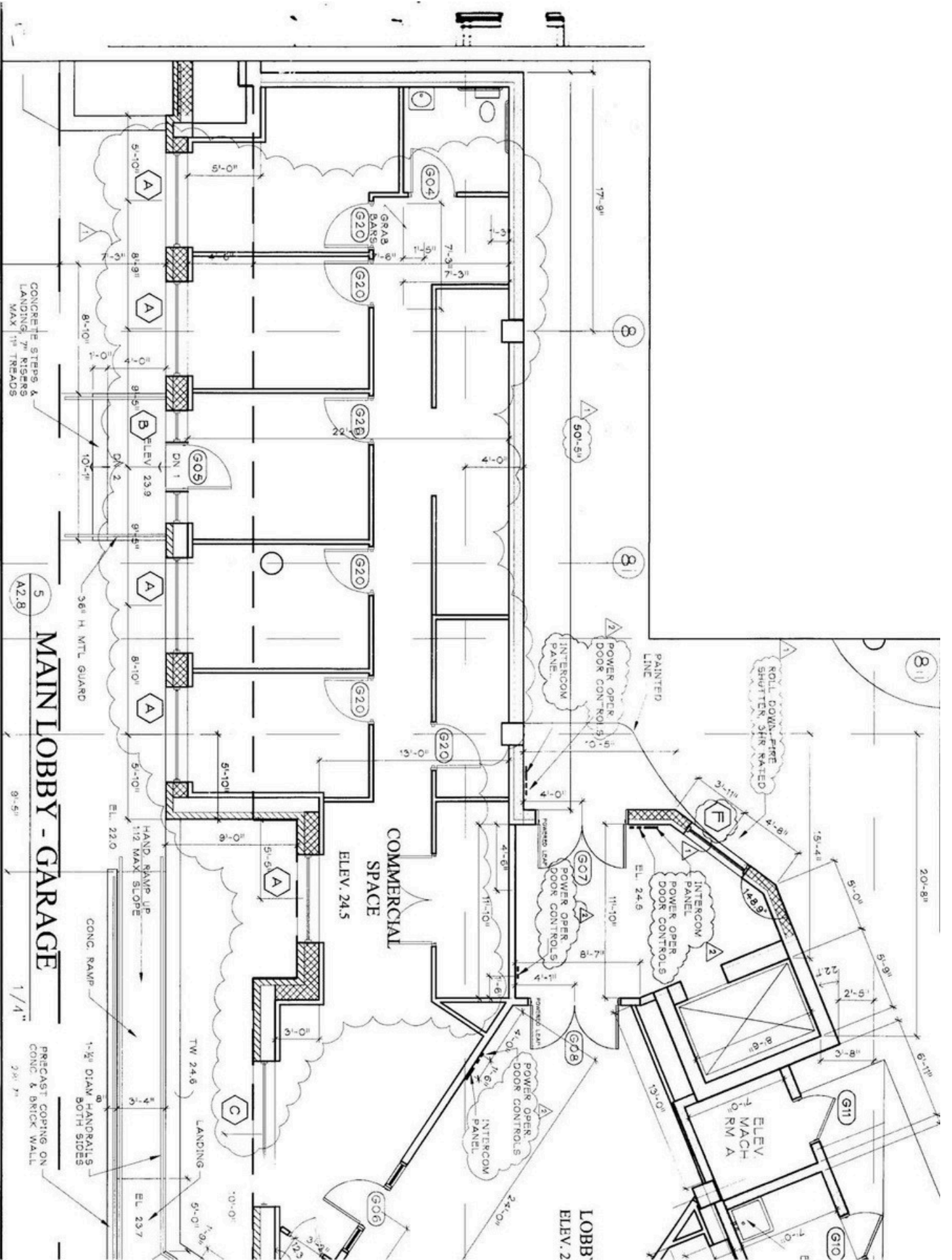
Chris Mailler
203-984-1822
chris@pyramidregroup.com

Jack Daniel
203-399-4366
jdaniel@pyramidregroup.com

PYRAMID

Pyramid Real Estate Group 500 Summer Street #502, Stamford, CT 06901 (203) 348-8566

The information above has been obtained from sources believed reliable. While we do not doubt its accuracy, we have not verified it and make no guarantee, warranty or representation about it. It is your responsibility to independently confirm its accuracy and completeness. Any projections, opinions, assumptions or estimates used are for example only and do not represent the current or future performance of the property. The value of this transaction to you depends on tax and other factors which should be evaluated by your tax, financial and legal advisors. You and your advisors should conduct a careful, independent investigation of the property to determine to your satisfaction the suitability of the property for your needs.



General

ACS, 2019–2023	Stamford	State
Current Population	135,806	3,598,348
Land Area <i>mi</i> ²	38 3,610	4,842
Population Density <i>people per mi</i> ²	54,165	743
Number of Households	38	1,420,170
Median Age	\$107,474	41
Median Household Income	10%	\$93,760
Poverty Rate		10%

Economy

Top Industries

Lightcast, 2023 (2 and 3 digit NAICS)	Jobs	Share of Industry
1 Health Care and Social Assistance	10,227	
Hospitals		38%
2 Finance and Insurance	8,354	
Securities, Commodities, & Financial Inv.	8,168	59%
3 Professional, Scientific, and Tech Svc		100%
Professional, Scientific, and Tech Svc	6,971	
4 Information		33%
Telecommunications	5,639	
5 Admin and Support and Waste Mgt		94%
Administrative and Support Services	70,757	
Total Jobs, All Industries		

SOTS Business Registrations

Secretary of the State, March 2025

New Business Registrations by Year

Year	2020	2021	2022	2023	2024
Total	1,848	2,233	2,345	2,486	2,335
Total Active Businesses				17,579	

Key Employers

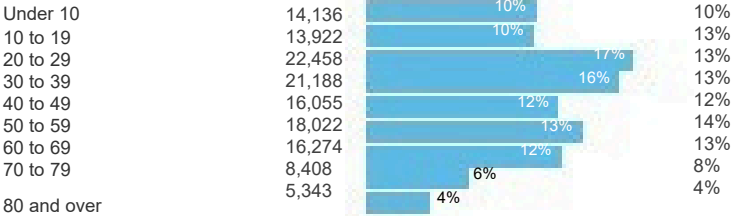
Data from Municipalities, 2025

- 1
- Stamford Health NBC
- 2
- Sports Group Gartner
- 3
- Deloitte Charter
- 4
- Communications
- 5

Demographics

ACS, 2019–2023

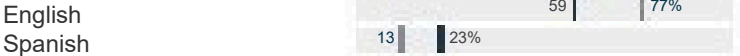
Age Distribution



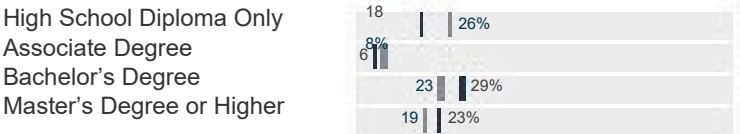
Race and Ethnicity



Language Spoken at Home



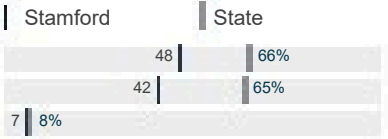
Educational Attainment



Housing

ACS, 2019–2023	Stamford	State
Median Home Value	\$614,300	\$1,431
Median Rent	\$2,207	1,536,049
Housing Units	57,958	

Owner-Occupied
Detached or Semi-Detached
Vacant



Schools

CT Department of Education, 2024-25

School Districts

	GA	Vraada	laabs	ET	ontra	ollmen	Enrro-Kilmen	R4-a	Yteea	(r2 G02r2d 23)
Stamford Charter School for Excellence	PK-8	543	0	364			20,762			
Stamford School District	PK-12	16,185					78%			
Statewide	-	508,402					88%			

Smarter Balanced Assessments

Meor Exceeded Expectations, 2023-24	Math	ELA
Stamford Charter School for Excellence	69%	74%
Stamford School District	32%	36%
Statewide	44%	49%

Stamford, Connecticut

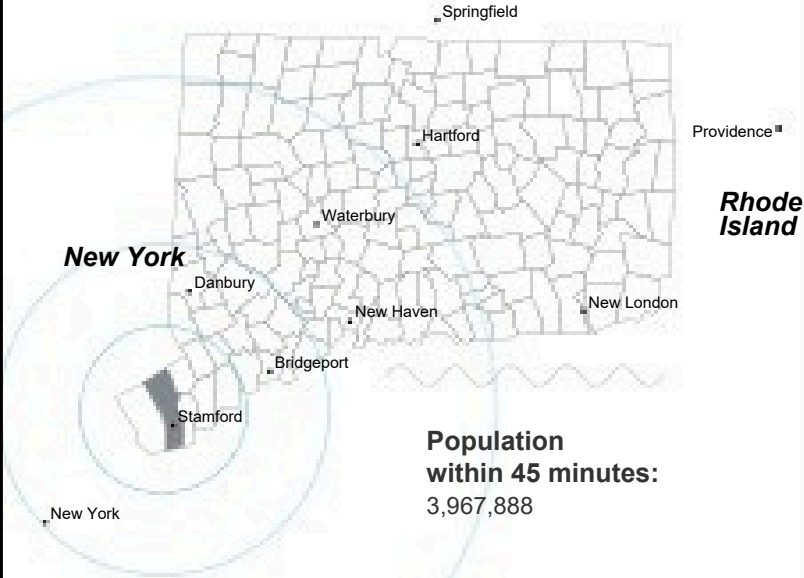
Labor Force

CT Department of Labor, 2024
Employed
Unemployed
Unemployment Rate
Self-Employment Rate*
*ACS, 2019–2023



Catchment Areas of 15mi, 30mi, and 60mi

Massachusetts

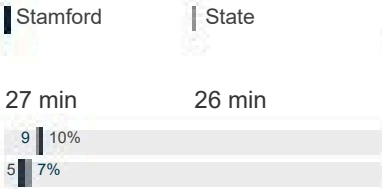


Population
within 45 minutes:
3,967,888

Access

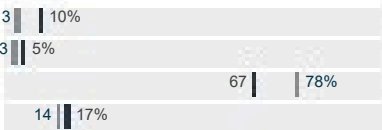
ACS, 2019–2023

Mean Commute Time *
No Access to a Car
No Internet Access



Commute Mode

Public Transport
Walking or Cycling
Driving
Working From Home *



Public Transit

CTtransit Service
Other Public Bus Operations
Train Service

Local, Stamford metro
-
Amtrak, Metro-North

* 5 year estimates include pre-pandemic data

Fiscal Indicators

CT Office of Policy and Management, State FY 2021-22

Municipal Revenue

Total Revenue	\$671,404,924
Property Tax Revenue	\$583,553,177
per capita	\$4,285 131%
per capita, as % of state avg.	\$58,259,308 112%
Intergovernmental Revenue	
Revenue to Expenditure Ratio	

Municipal Expenditure

Total Expenditure	\$599,317,100
Educational	\$336,545,453
Other	\$262,771,647

Grand List

Equalized Net Grand List	\$36,221,552,565
per capita	\$265,967
per capita, as % of state avg.	149%

Commercial/Industrial	26%
Share of Net Grand List	27.25
Actual Mill Rate	16.45

Municipal Debt

Moody's Rating (2024)	Aa1
S&P Rating (2024)	AAA
Total Indebtedness	\$400,683,667
per capita	\$2,942
per capita, as % of state avg.	100%
as percent of expenditures	67%
Annual Debt Service	\$53,909,237
as % of expenditures	9%

About Town Profiles

The Connecticut Town Profiles are two-page reports of demographic and economic information for each of Connecticut's 169 municipalities. Reports for data are available from profiles.ctdata.org

Feedback is welcome, and should be directed to info@ctdata.org.

These Profiles can be used free of charge by external organizations, as long as

AdvanceCT and *CTData Collaborative* are cited. No representation or warranties, expressed or implied, are given regarding the accuracy of this information.