

FOR LEASE

# ROSE LAKE OFFICE PARK

3404 NW 178TH, EDMOND, OK 73012  
ROSE LAKE OFFICE PARK



# BANTA

Property Group

## **BANTA PROPERTY GROUP, LLC**

405.840.1600

[BANTAPROPERTYGROUP.COM](http://BANTAPROPERTYGROUP.COM)

308 SW 25TH, OKLAHOMA CITY, OK 73109

## **GREG BANTA**

405.823.3026

[GREG@BANTAPROPERTYGROUP.COM](mailto:GREG@BANTAPROPERTYGROUP.COM)

## **ZACK CONROY**

405.840.1600 X13

[ZACK@BANTAPROPERTYGROUP.COM](mailto:ZACK@BANTAPROPERTYGROUP.COM)

# ROSE LAKE OFFICE PARK

3404 NW 178TH, EDMOND, OK 73012 ROSE LAKE OFFICE PARK



## OFFERING SUMMARY

Lease Rate:	\$22.00 SF/yr (MG)
Number of Units:	1
Available SF:	1,386 SF
Building Size:	2,772 SF
Year Built:	2021
Submarket:	North Outlying

## PROPERTY DESCRIPTION

This executive-style move-in-ready suite offers a professional and modern environment for businesses seeking suburban office settings. The space includes a reception area, five good sized rooms, kitchen/file, high ceilings, climate-controlled comfort, and a private entrance.

## LOCATION DESCRIPTION

This office complex fronts NW 178th between May Avenue and Portland. Convenient access to Lake Hefner Parkway and the Kilpatrick Turnpike

## PROPERTY HIGHLIGHTS

- Welcoming entrance for clients and guests
- Class "A" finishes throughout
- Efficient Floor Plan
- Located in a well-maintained business park

DEMOGRAPHICS	2 MILES	4 MILES	6 MILES
Total Population	25,515	85,930	201,877

GREG BANTA

405.823.3026

GREG@BANTAPROPERTYGROUP.COM

ZACK CONROY

405.840.1600 X13

ZACK@BANTAPROPERTYGROUP.COM



# ROSE LAKE OFFICE PARK

3404 NW 178TH, EDMOND, OK 73012



**GREG BANTA**

405.823.3026

GREG@BANTAPROPERTYGROUP.COM

**ZACK CONROY**

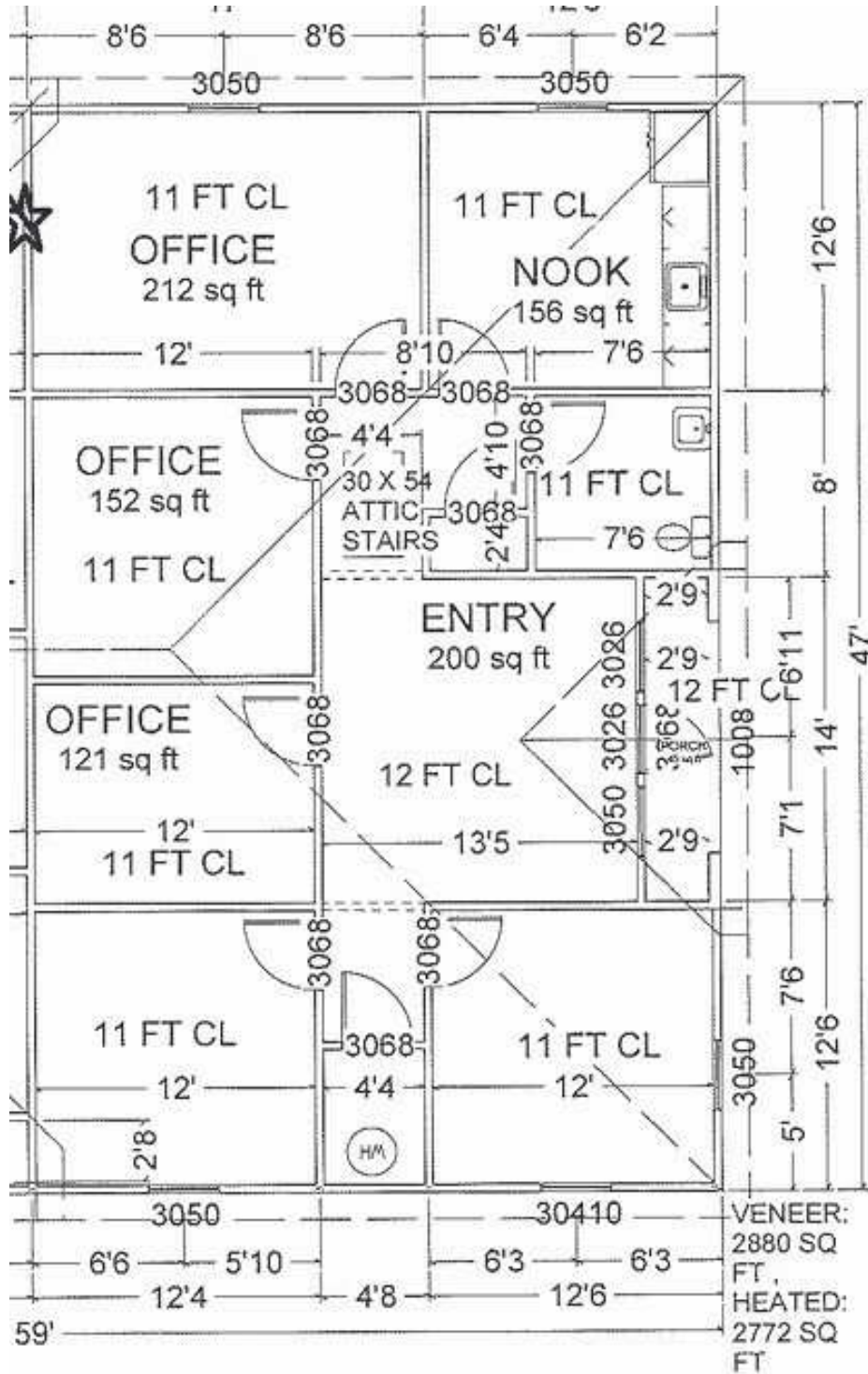
405.840.1600 X13

ZACK@BANTAPROPERTYGROUP.COM



# ROSE LAKE OFFICE PARK

3404 NW 178TH, EDMOND, OK 73012



GREG BANTA

405.823.3026

GREG@BANTAPROPERTYGROUP.COM

ZACK CONROY

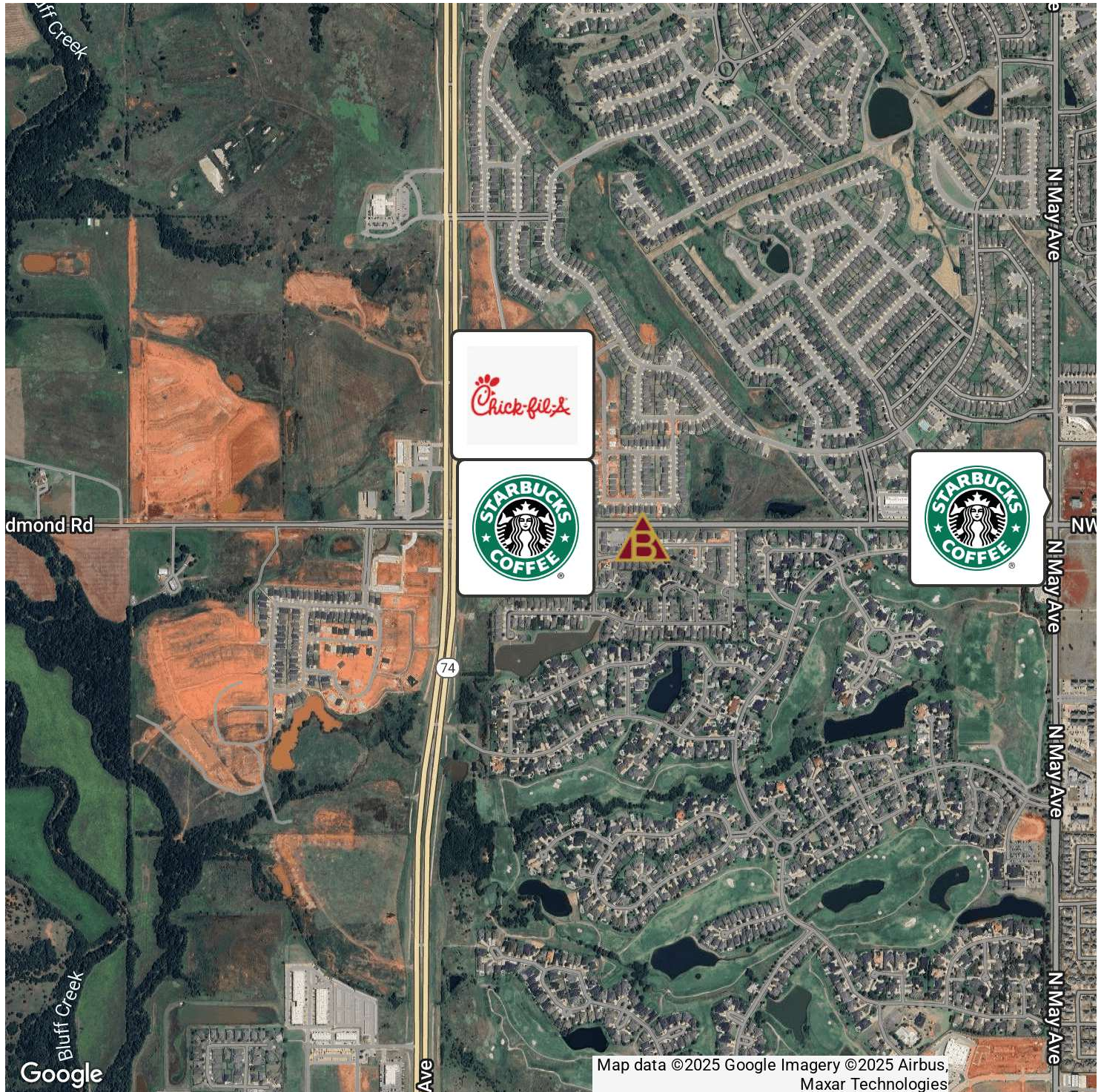
405.840.1600 X13

ZACK@BANTAPROPERTYGROUP.COM



# ROSE LAKE OFFICE PARK

3404 NW 178TH, EDMOND, OK 73012



Map data ©2025 Google Imagery ©2025 Airbus, Maxar Technologies

**GREG BANTA**

405.823.3026

GREG@BANTAPROPERTYGROUP.COM

**ZACK CONROY**

405.840.1600 X13

ZACK@BANTAPROPERTYGROUP.COM

