

310

N Wilmot Rd

For Lease



Carondelet
St. Joseph's Hospital

300

200

100

Carondelet Dr

Wilmot Rd

CBRE



property highlights

Campus Highlights:

- + Adjacent Carondelet St. Joseph's Hospital: a 449-bed facility
- + Services provided include heart and vascular, neurology, and women's care services, etc.
- + Home to Carondelet Neurological Institute and Carondelet Joint Replacement Center

Area Amenities:

- + Easily accessible from signalized intersection
- + Close proximity to restaurants and services, including Park Place Mall

Property Details

Available	±1,161 RSF up to ±9,289 RSF
Lease Rate	\$24.50/SF Modified Gross
Zoning	O-3, City of Tucson
Year Built	1977
Parking	5.63/1,000 SF



SITE PLAN



Building 100

104	AVAILABLE	±1,161 RSF
-----	-----------	------------

Building 200

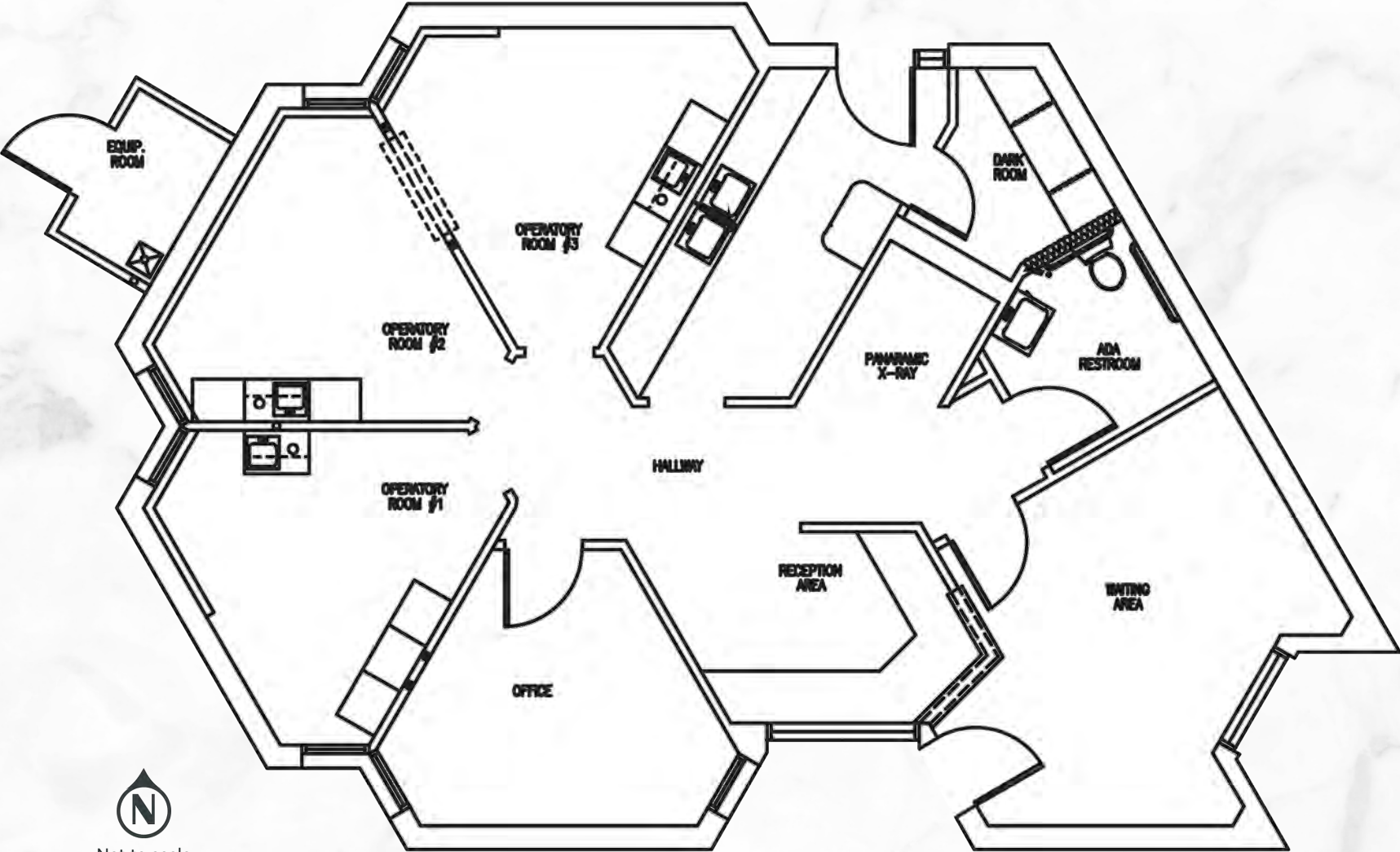
204	AVAILABLE	±1,171 RSF
205*	AVAILABLE	±1,225 RSF
208*	AVAILABLE	±2,542 RSF
210*	AVAILABLE	±1,543 RSF

Building 300

308*	AVAILABLE	±9,289 RSF
312*	AVAILABLE	±1,617 RSF

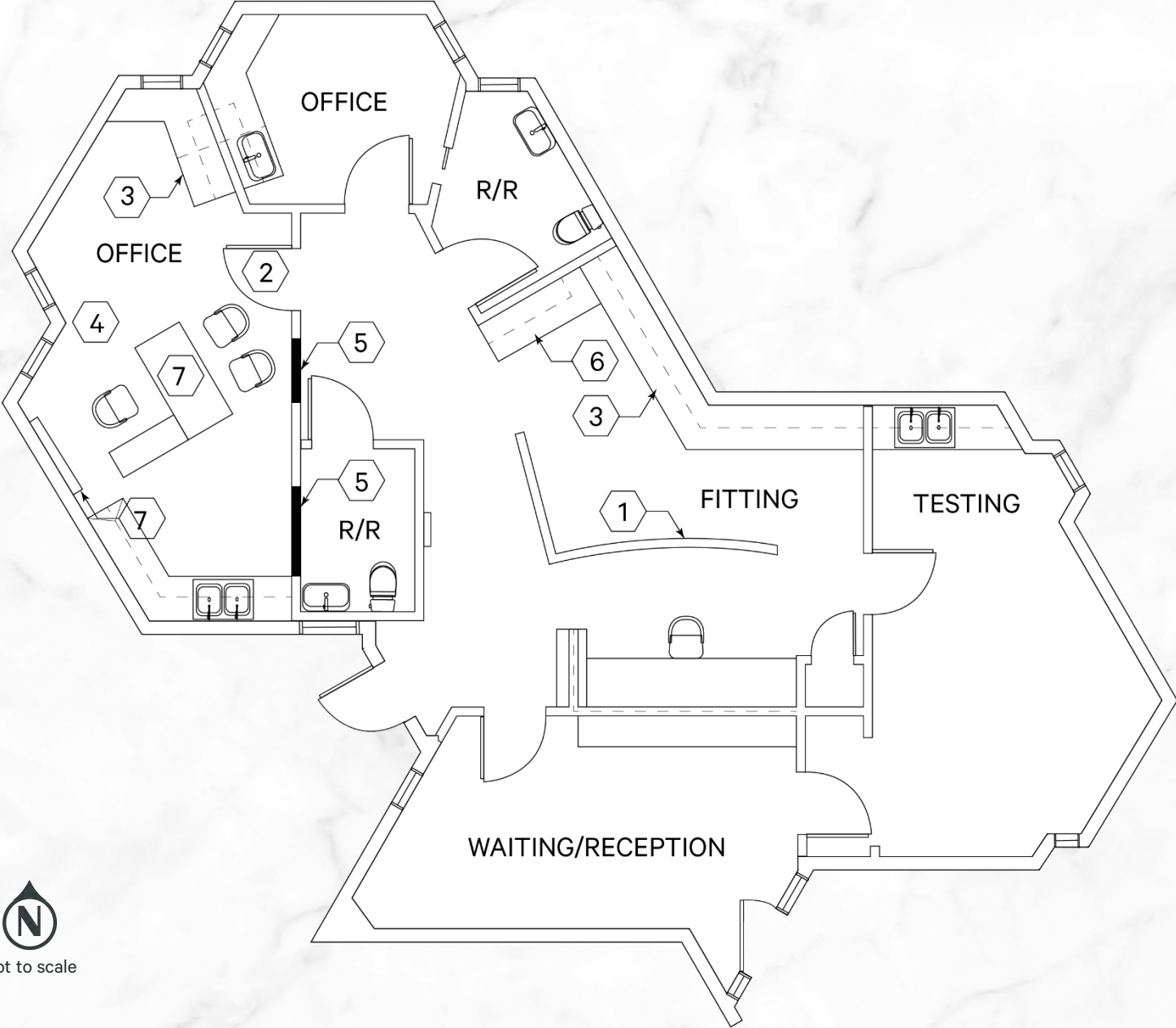
*Floor plan on following pages

FLOOR PLAN - Suite 205 ±1,225 RSF

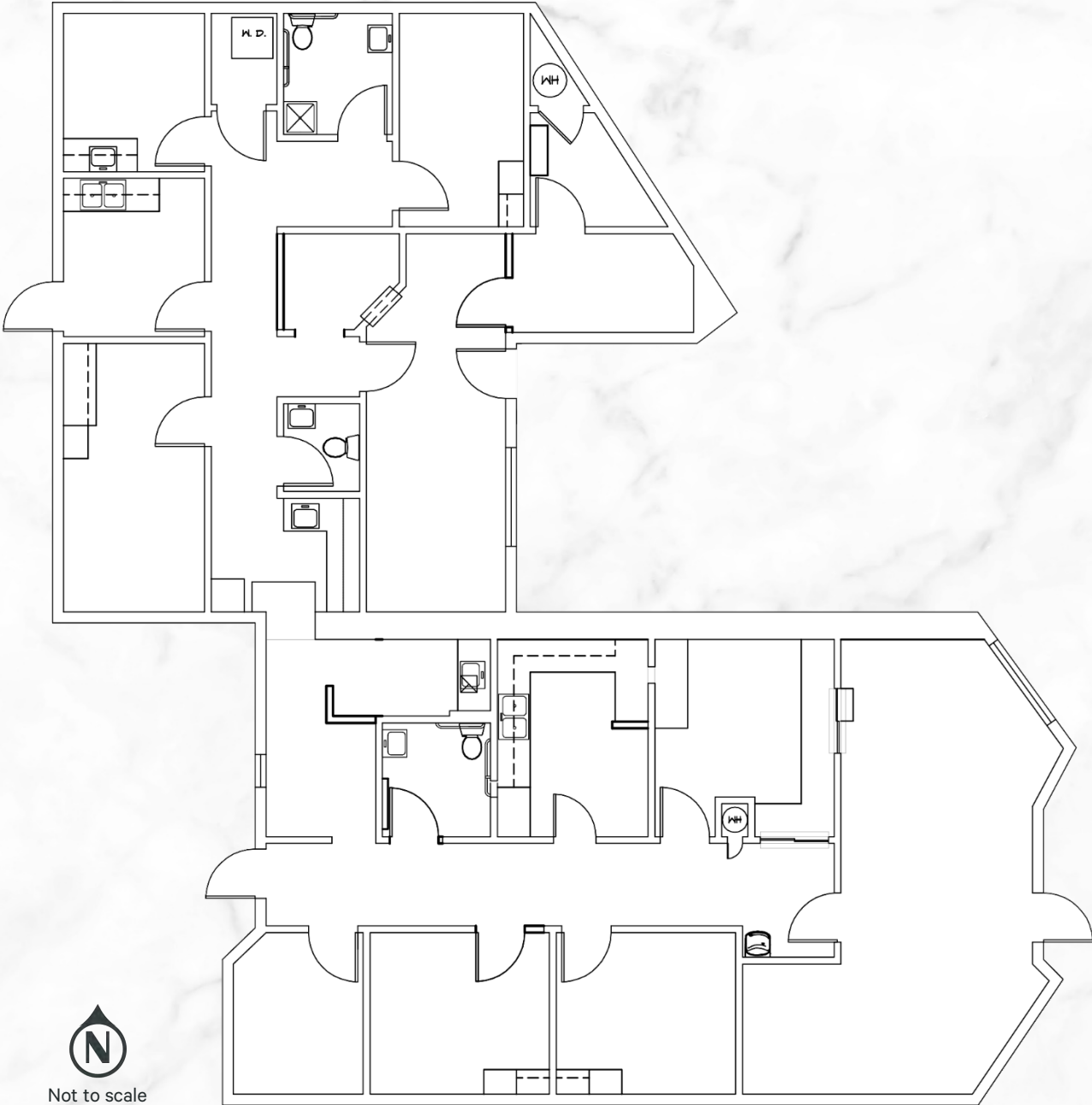



Not to scale

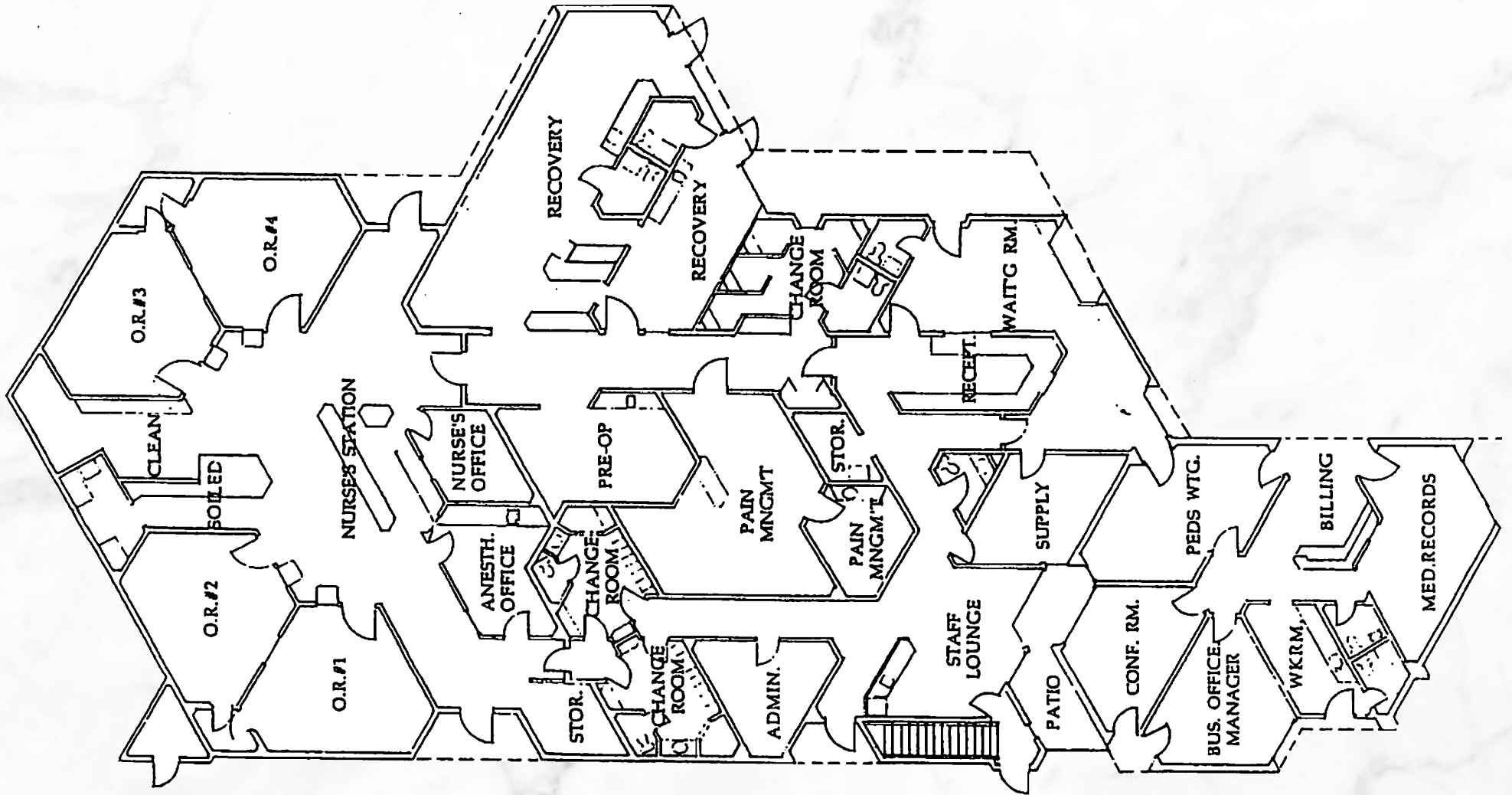
FLOOR PLAN - Suite 210 ±1,543 RSF



FLOOR PLAN - Suite 208 ±2,542 RSF

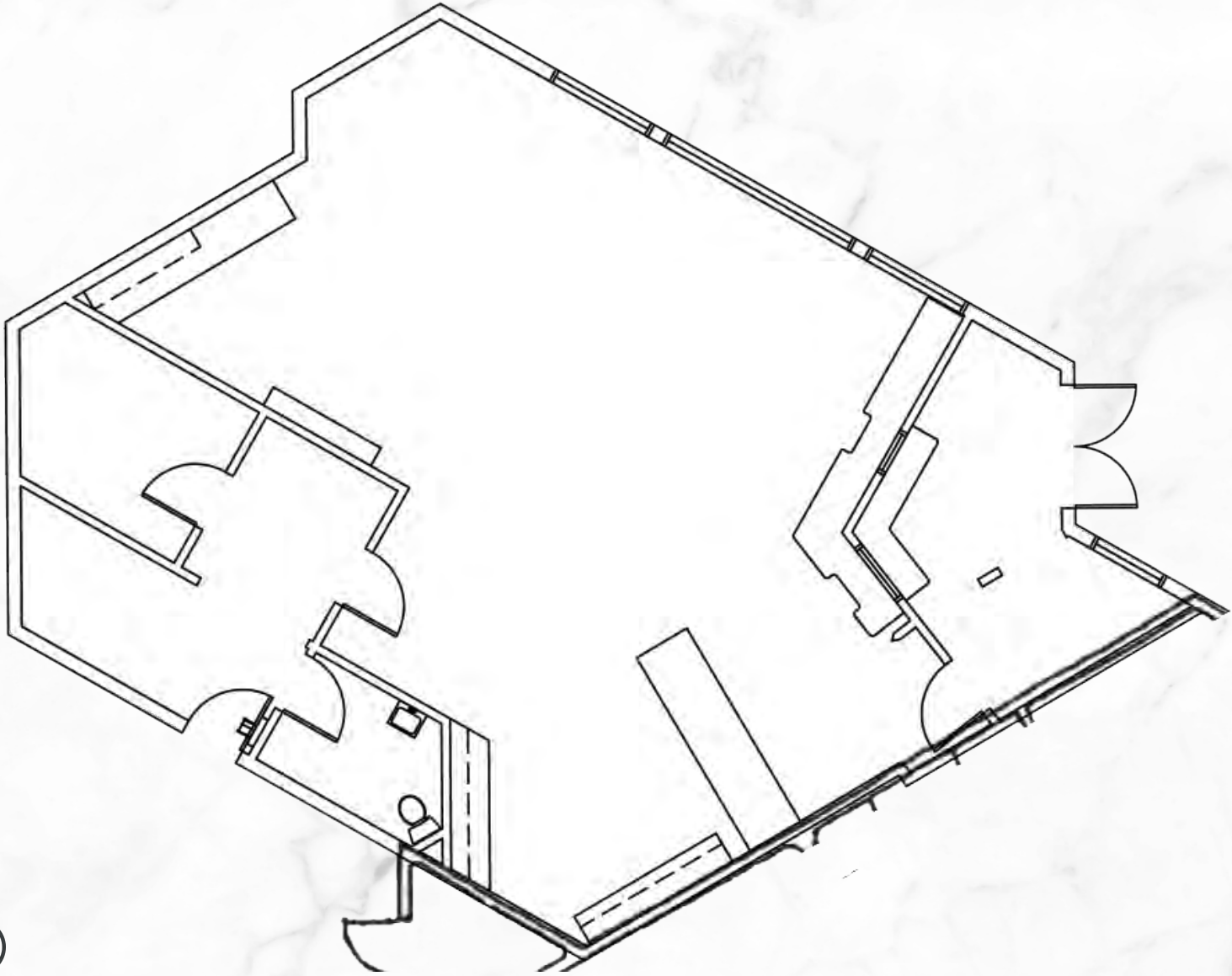


FLOOR PLAN - Suite 308 ±9,289 RSF



Not to scale

FLOOR PLAN - Suite 312 ±1,617 RSF



Not to scale

AERIAL



310

N Wilmot Rd

CONTACT US

David Montijo

First Vice President

+1 520 323 5136

david.montijo@cbre.com

© 2025 CBRE, Inc. All rights reserved. This information has been obtained from sources believed reliable, but has not been verified for accuracy or completeness. You should conduct a careful, independent investigation of the property and verify all information. Any reliance on this information is solely at your own risk. CBRE and the CBRE logo are service marks of CBRE, Inc. All other marks displayed on this document are the property of their respective owners, and the use of such logos does not imply any affiliation with or endorsement of CBRE. Photos herein are the property of their respective owners. Use of these images without the express written consent of the owner is prohibited.

