



FOR LEASE

■ 5330 US Highway 1

5330 US Highway 1

Vero Beach, FL 32967

PROPERTY OVERVIEW

This emerging retail node includes Walgreens, Publix and McDonalds, along with a number of other retail uses. Strong residential area growth. Underlying lease expires in 2039.

LOCATION OVERVIEW

Lot 2 of The Landings retail development, adjacent to CVS/Pharmacy with US Highway 1 frontage.

OFFERING SUMMARY

| | |
|----------------|---|
| Land Size: | 1.41 Acres |
| Zoning: | Commercial General, Indian River County |
| Utilities: | Indian River County |
| Available SF: | 1.41 Acres |
| Traffic Count: | 23,000 AADT |

LEASE RATE

Negotiable



JEFFREY D. CHAMBERLIN

PRESIDENT/BROKER, CCIM,
SIOR

Mobile 772.528.6056

chamberlin@slccommercial.com



JAIME CHAMBERLIN

ASSOCIATE

Mobile 772.486.3330

jaime@slccommercial.com

772.220.4096 | slccommercial.com



SLC Commercial
Realty & Development



Property Details

THE LANDINGS RETAIL DEVELOPMENT

FOR LEASE

LEASE RATE

NEGOTIABLE

Location Information

Building Name The Landings Retail Development
Street Address 5330 US Highway 1
City, State, Zip Vero Beach, FL 32967
County/Township Indian River
Cross Streets 53rd Street

Land

Number Of Lots 1
Best Use See Permitted Uses

Restricted Uses Include

Restaurant
Photo Processing
Drugstore
Pharmacy Prescriptions
Discount or Dollar Stores

Property Details

Property Type Land
Property Subtype Retail
Lot Size 1.41 Acres
APN# 32391400003000000002.0
Lot Frontage 206 FT
Lot Depth 290 FT
Traffic Count 23,000 AADT
Traffic Count Street US Highway 1
Utilities Indian River County

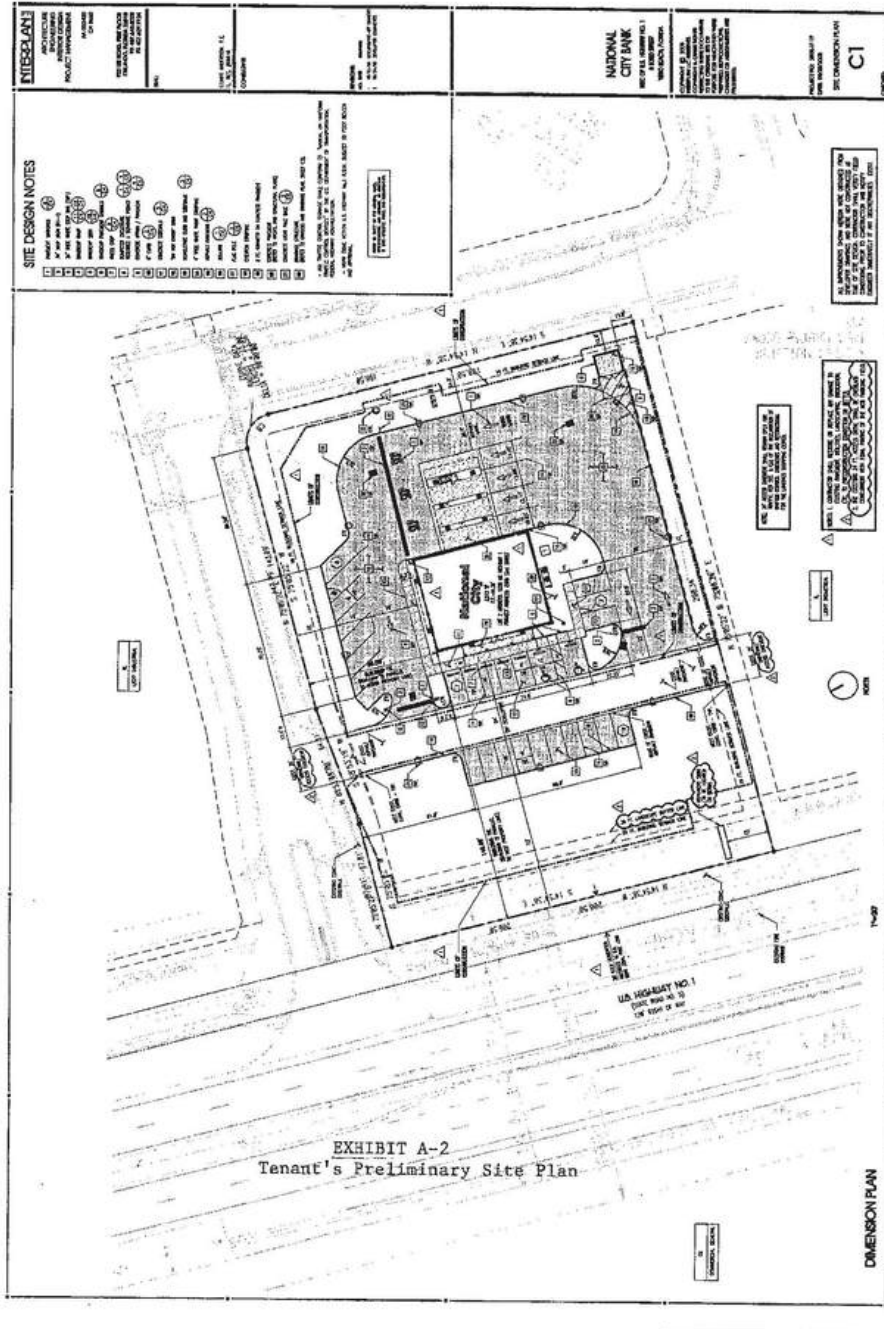
Location Overview

Lot 2 of The Landings retail development, adjacent to CVS/Pharmacy with US Highway 1 frontage.

Conceptual Site Plan

5330 US HWY 1

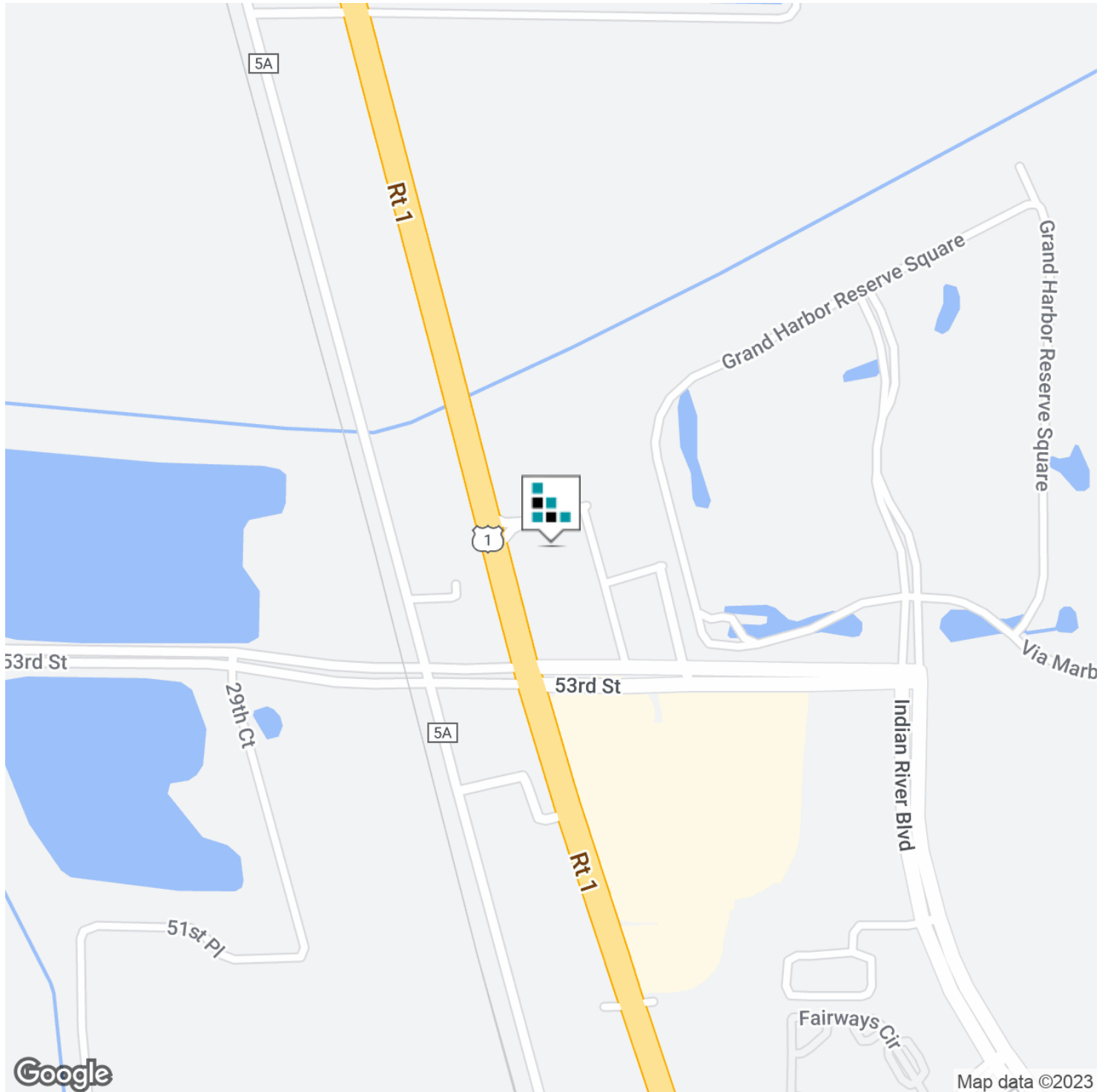
FOR LEASE



Location Map

5330 US HWY 1

FOR LEASE



Retailer Map

5330 US HWY 1

FOR LEASE



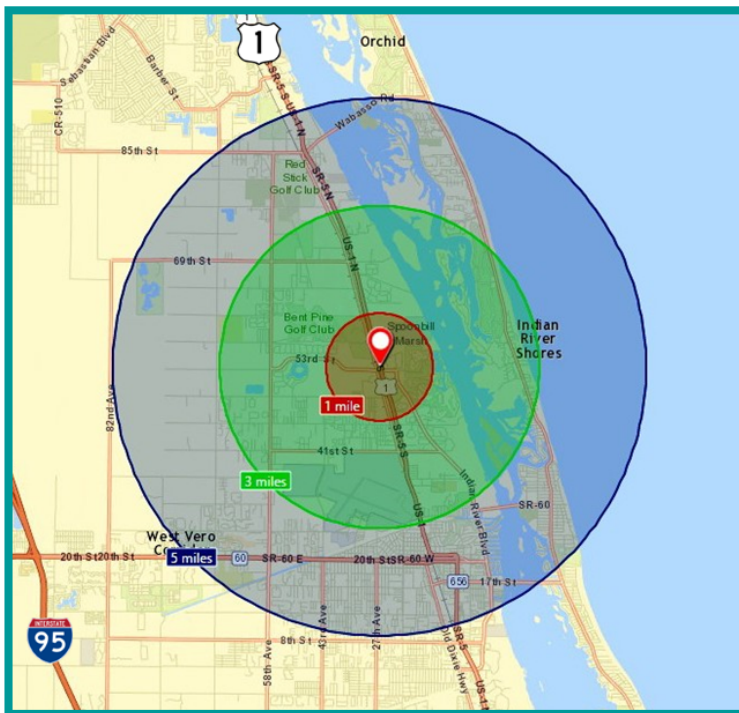
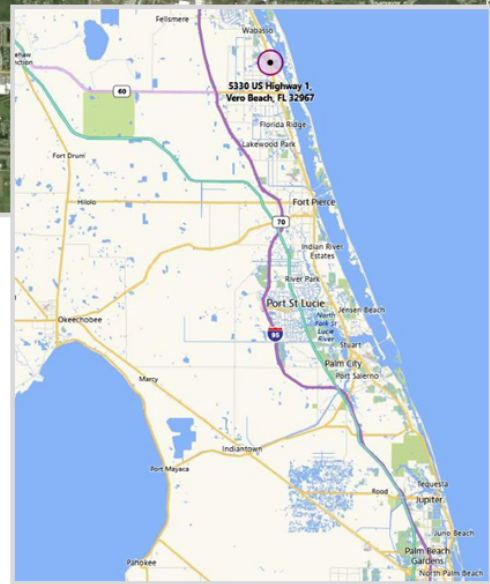
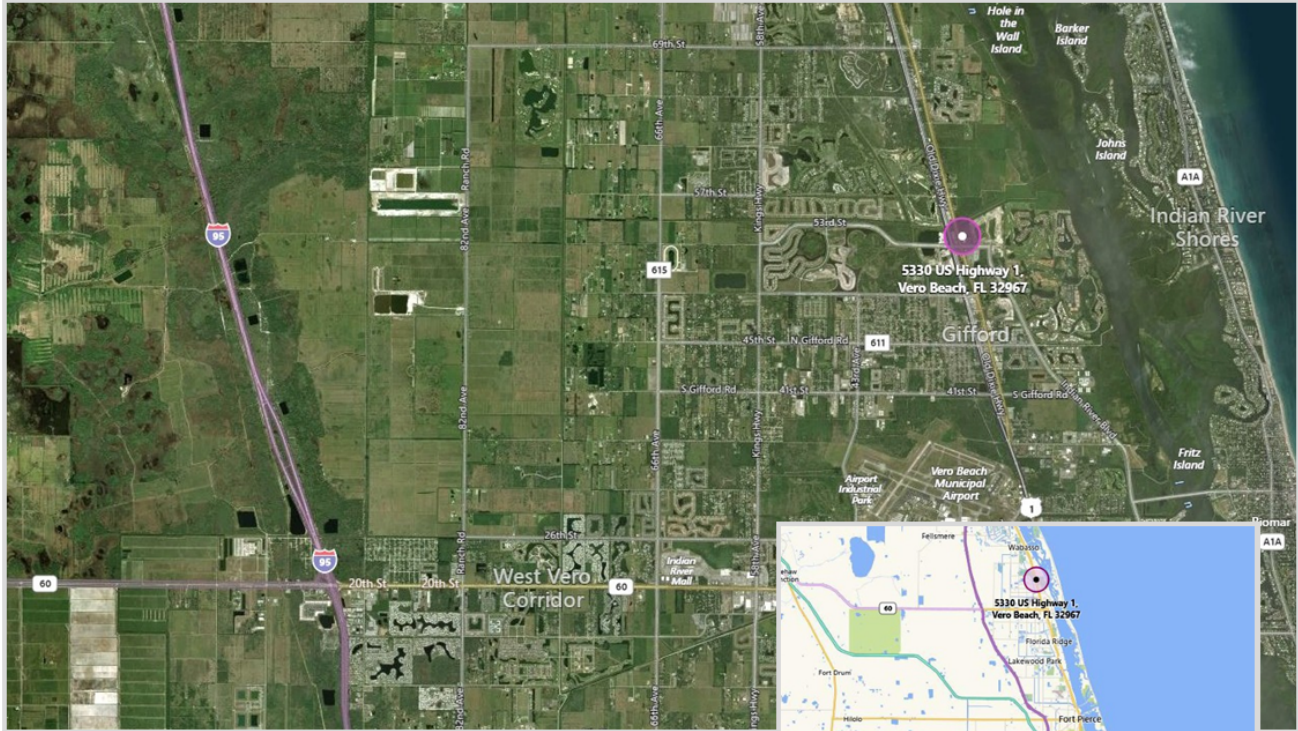
Google

Imagery ©2023, Maxar Technologies, U.S. Geological Survey

Location & Demographic Map

5330 US HWY 1

FOR LEASE



| Demographic Profile | | | |
|---------------------|----------|----------|----------|
| | 1 Mile | 3 Mile | 5 Mile |
| Population | 2,576 | 18,328 | 49,414 |
| Households | 1,237 | 8,088 | 22,866 |
| Ave HH Income | \$63,277 | \$82,747 | \$74,644 |
| Median Age | 52.4 | 53.6 | 53.8 |

Zoning

5330 US HWY 1

FOR LEASE

PERMITTED USE

Agriculture

Horticultural and landscape plants and specialties
Pet-grooming (no boarding)
Landscape services

Commercial

Banks and credit institutions
Small-scale banks and credit institutions
Security and commodity brokers
Insurance agents, brokers and service
Automatic teller machines
Real Estate
Holding and other investment offices
Legal services
Lodging facilities hotels and motels
Boardinghouses
Membership based hotels
Laundries and Laundromats (excl. drycleaners)
Garment pressing and drycleaners drop-off/pickup
Linen supply
Carpet and upholstery
Photographic studios
Beauty shops
Barber shops
Shoe repair
Funeral homes
Funeral chapels
Crematoriums
Advertising
Credit reporting and collection
Mailing, reproduction and stenographic services
Equipment rental and leasing
Employment agencies
Help supply services
Computer and data processing
Bail bondsman
General and professional office
Automobile rentals
Automobile parking and storage
General automotive
Carwashes
Automotive fluid sales and services (other than gasoline)
Electrical repair
Watch, clock, jewelry
Production and distribution services
Motion picture theaters
Video tape rentals
Dance studios, school and halls, gyms
Theatrical production
Enclosed commercial amusements
Health and fitness centers
Membership sports and recreation
Coin-operated amusements
Offices and clinics
Medical and dental laboratory
Home health care services
Specialty outpatient clinics
Convenience stores

Hardware stores
Retail nurseries and garden supplies
Department stores
Variety stores
Auction facilities, enclosed
Used merchandise (including pawn shops)
Grocery stores
Meat and fish markets
Fruit and vegetable markets
Candy, nut and confectionery stores
Dairy products stores
Retail bakeries
New and used cars dealers
Auto and home supply stores
Gasoline service stations
Motorcycle dealers
Automotive fuel sales
Apparel and Accessory Stores
Furniture and home furnishing stores
Small-scale home furnishings showrooms (excluding furniture and major appliances)
Household appliance stores
Radio, television and computer stores
Restaurants
Carry out restaurants
Drive through restaurants
Bars and lounges
Drug stores
Liquor stores
Miscellaneous shopping goods
Florists
News stands
Sporting goods
Optical goods
Gift stores
Book and card store
Catalogue and mail order house
Fuel Dealers
Community Services
Libraries
Vocational, technical and business
Individual and family services
Job training services
Child care and adult care
Place of worship
Cultural and Civic Facilities
Civic and social membership organizations
Government administrative buildings
Courts
Emergency services
Transportation and communication
Local and suburban transit
Post Office
Travel and tour agencies
Freight transport arrangement
Telephone and telegraph
Radio and television broadcasting
Cable and pay T.V.

ADMINISTRATIVE PERMIT USE

Agriculture

Kennels and animal boarding
Commercial fishery
Commercial
Bed and breakfast
Driving ranges
Veterinarian clinic
Building materials and garden supplies
Model mobile home display
Boat sales and rentals
Recreational vehicle sales
Commercial marina
Marine repair and service
Fruit and vegetable packing house
Community Services
Educational centers including primary and secondary schools
Colleges and universities
Transportation and communication
Self-service storage facilities
Communications towers (wireless facilities)
Public and private utilities, limited
Residential Uses
Multifamily dwelling

SPECIAL EXCEPTION USE

Commercial

Miniature golf courses
Used vehicle sales
Bottle clubs
Community Services
Homes for aged, including nursing homes and rest homes
Residential treatment center
Group homes (residential centers)
Adult congregate living facility (21+ residents)
Transportation and communication
Heliport/helipad



Disclaimer

5330 US HWY 1

FOR LEASE

This presentation package has been prepared by the company representing the property for informational purposes only and does not purport to contain all information necessary to reach a purchase decision.

The information herein has been given by the Owner or other sources believed to be reliable, but it has not necessarily been independently verified by the Company representing the property and neither its accuracy nor its completeness is guaranteed.

This information is subject to errors, omissions, changes, prior sale or withdrawal without notice by the Company representing the property and does not constitute a recommendation, endorsement or advice as to the value for the purchase of any property. Each prospective lessee or purchaser is to rely upon his/her own investigation, evaluation and judgment as to the advisability of leasing or purchasing the property.

Furthermore, any financial information and calculations presented in this analysis are believed to be accurate, but are not guaranteed and are intended for the purposes of projection and analysis only. The user of this financial information contained herein should consult a tax specialist concerning his/her particular circumstances before making any investment.