

MODERN CORNER BUILDING FOR SALE

Located in the Heart of
Central Harlem

Asking Price:
\$6,750,000



Property Highlights

- 3-Story Mixed-Use Corner Building
- Redeveloped in 2005
- 106 ft Frontage on a High-Traffic Block
- Ground Floor Retail: 2,216 sq ft
- Four Apartments: Each 1,108 sq ft
- 100% Free-Market Property

Key Features

This property features prime commercial space just 2 blocks from the 125th Street Subway and near the Urban Empowerment Center. It's close to popular spots like Pandora, Trader Joe's, and Target, and surrounded by historic landmarks, including the Apollo Theater.

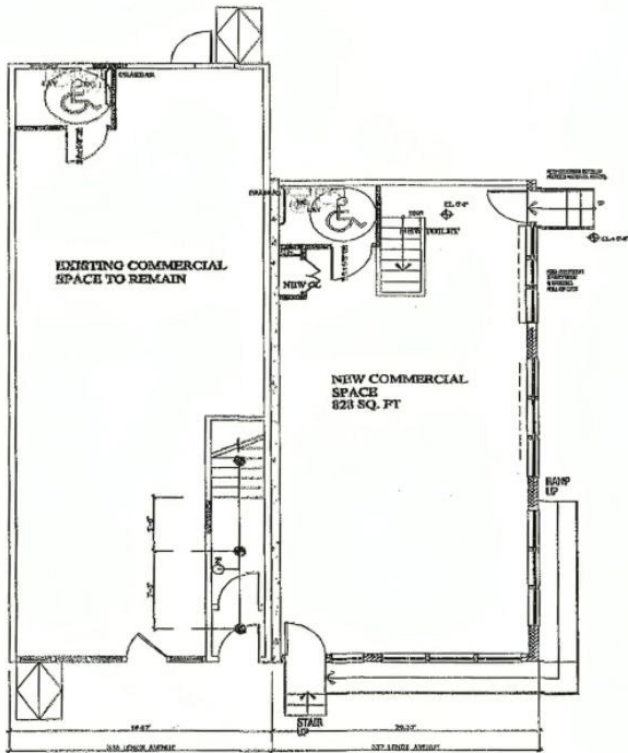


GET IN TOUCH

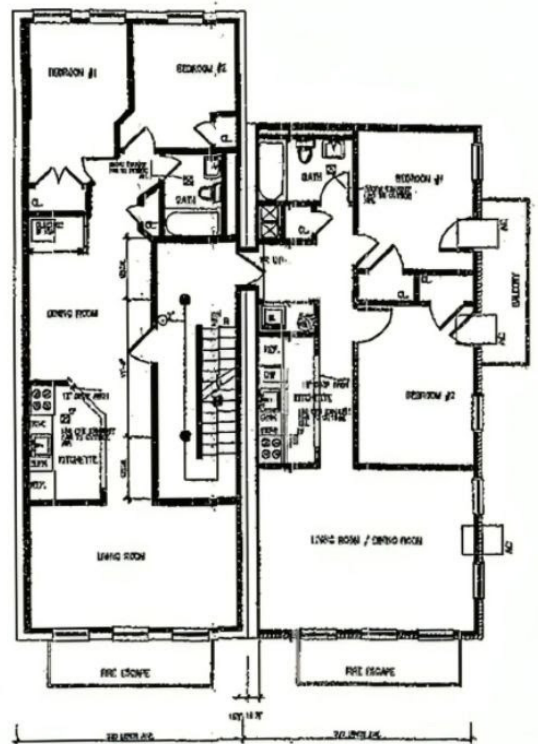
lisamarquis@verizon.net
917 392 1718

[facebook.com/connection
realestateservices.newyork](https://facebook.com/connectionrealestateservices.newyork)

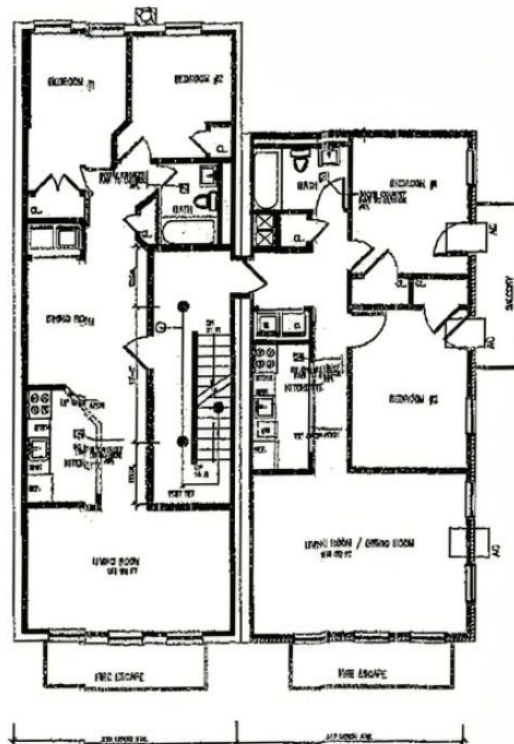
New York City.



FIRST FLOOR PLAN
NOT TO SCALE



SECOND FLOOR PLAN
NOT TO SCALE



THIRD FLOOR PLAN
NOT TO SCALE

GET IN TOUCH

lisamarquis@verizon.net
917 392 1718

facebook.com/connection
realestateservices.newyork

New York City.