

5225

Nesconset Hwy., Port Jefferson Station





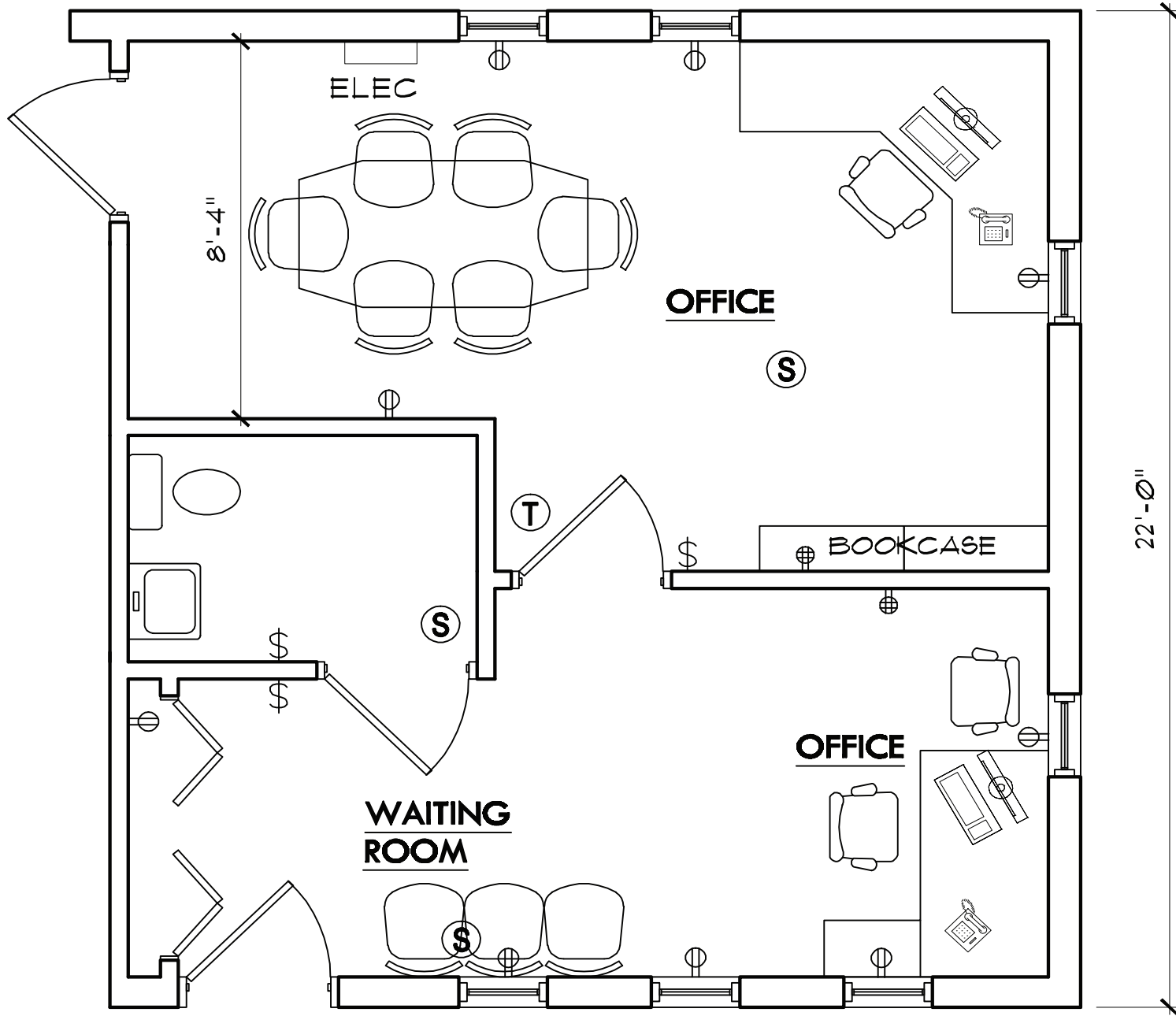
SUITES AVAILABLE

- **Building 4 Unit 19: 440 SF**
- **Building 8 Unit 51 & 52: 1,320 SF**

- Close proximity to all area hospitals : John T. Mather Memorial (1.5 mi), St. Charles (2.2 mi), Stony Brook University Hospital (7 mi)
- Built to suit turn-key installation
- Walking distance to local shopping
- 1 mile from Port Jefferson Train Station
- Ample parking
- On-site storage
- High speed internet access
- Signage available

Building 4 Unit 19: 440 SF

VIRTUAL
TOUR



FOR MORE INFORMATION:

John Finn
631.360.9000
jfinn@drgrealty.com

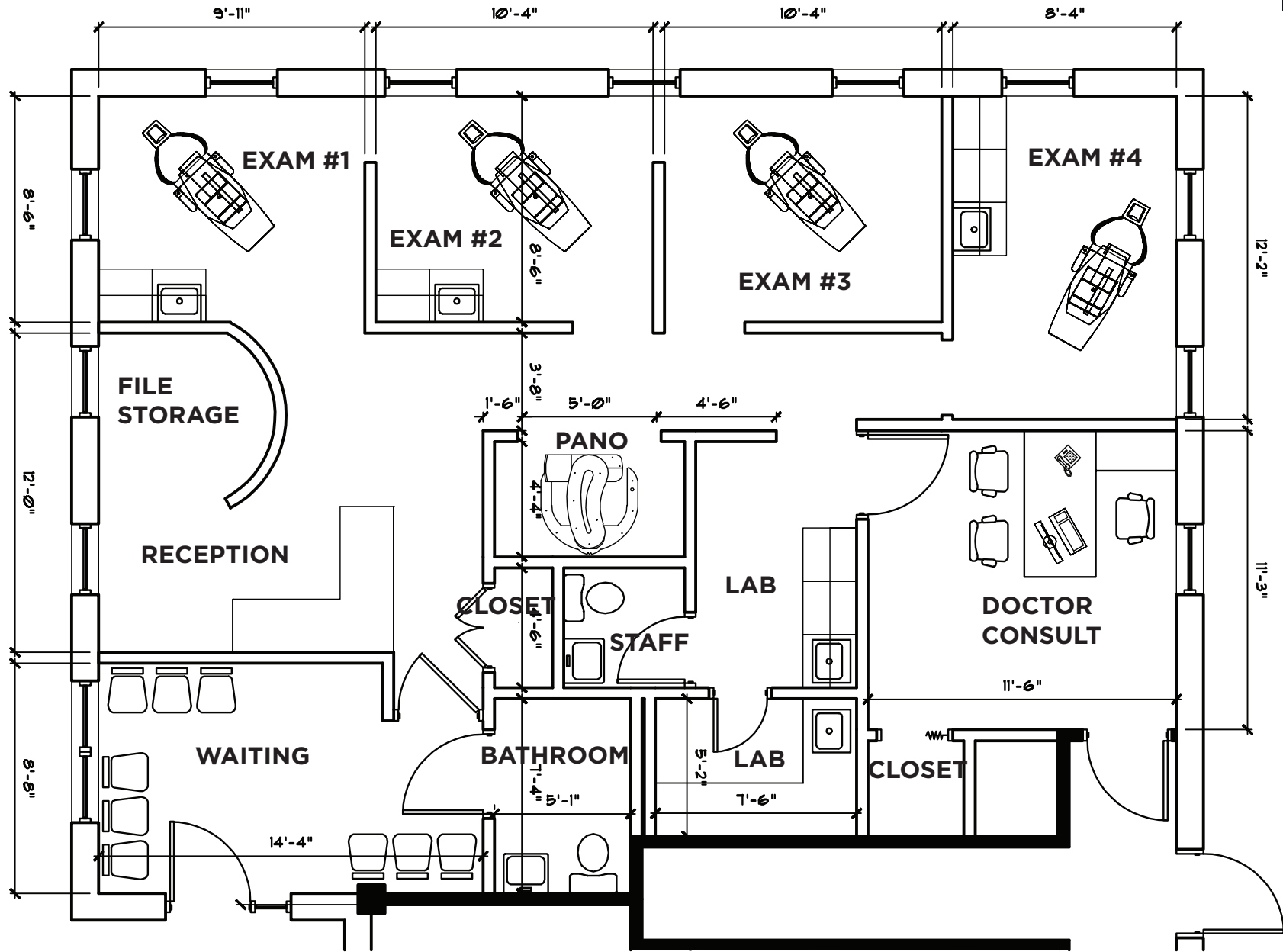
John Greco
631.360.9000
jgreco@drgrealty.com

Matt Finn
631.360.9000
mfinn@drgrealty.com

Building 8-10 Unit 51 & 52: 1,320 SF

*Pre-Built Dental Suite!

VIRTUAL
TOUR



FOR MORE INFORMATION:

John Finn

631.360.9000
jfinn@drgrealty.com

John Greco

631.360.9000
jgreco@drgrealty.com

Matt Finn

631.360.9000
mfinn@drgrealty.com

 **DAMIANOS**
REALTY GROUP

55
YEARS



FOR MORE INFORMATION:

John Finn
631.360.9000
jfinn@drgrealty.com

John Greco
631.360.9000
jgreco@drgrealty.com

Matt Finn
631.360.9000
mfinn@drgrealty.com