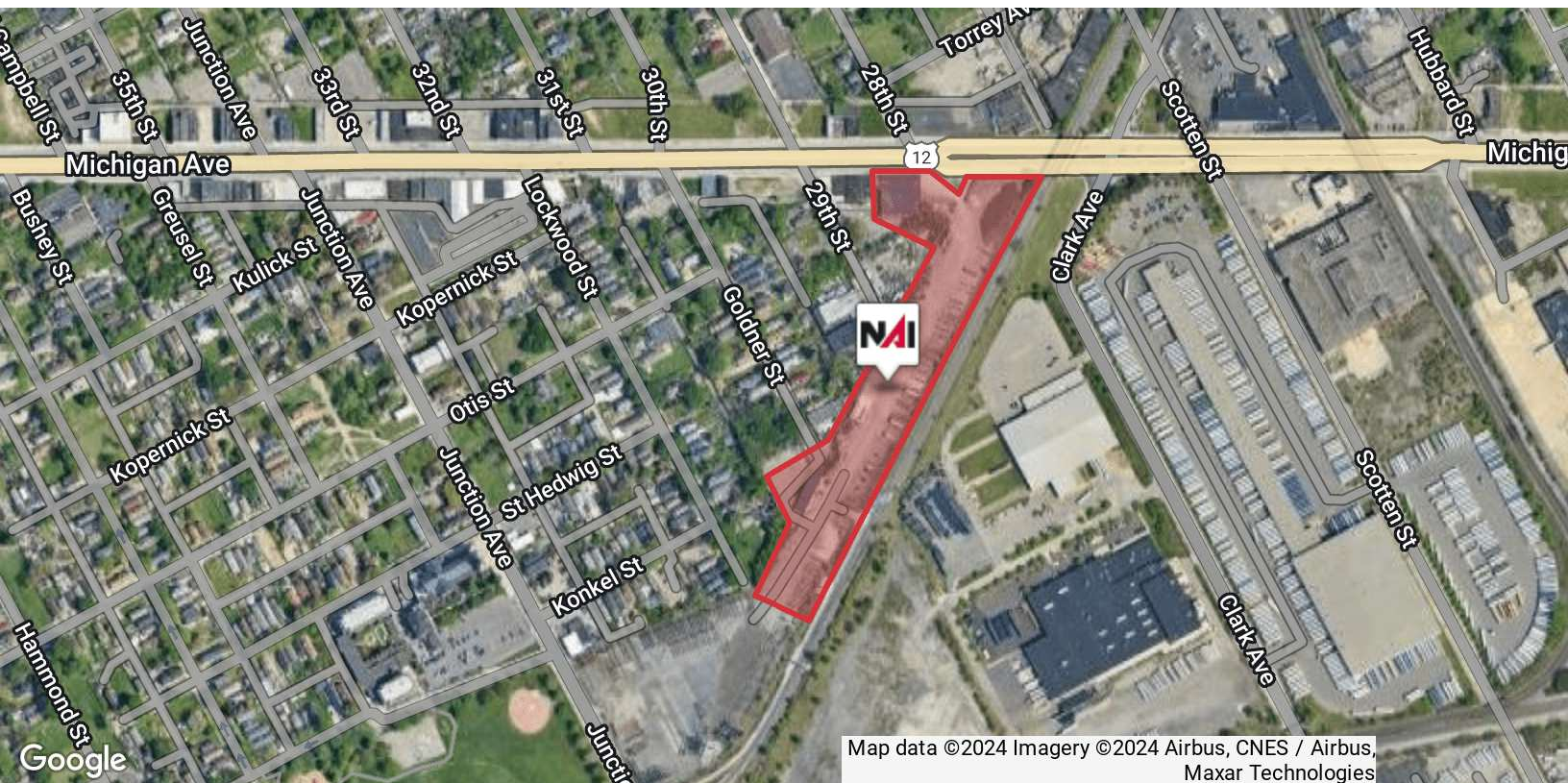


7 ACRES + 12,000 SF WAREHOUSE + REPAIR GARAGE

LAND / WAREHOUSE



FOR LEASE



Map data ©2024 Imagery ©2024 Airbus, CNES / Airbus, Maxar Technologies

**2890 Junction Avenue &
4379 Michigan Ave**
Detroit, Michigan 48210

Property Highlights

- Rare Parking Opportunity in Detroit
- Fenced & Milled Parking Lot
- Security System w/ Cameras and Electronic Gate access off of Michigan Ave
- Close vicinity to Nearby Railyard
- Quick access to all major expressways
- 4,500 SF of Office Space and 12,000 SF Warehouse Space Available
- Property access off Michigan Ave and Goldner St.

OFFERING SUMMARY

Lease Rate:	\$6,500.00 Acre/month
Lot Size:	5 Acres

DEMOGRAPHICS 0.3 MILES 0.5 MILES 1 MILE

Total Households	131	594	3,883
Total Population	429	1,857	11,351
Average HH Income	\$51,824	\$49,381	\$52,356



Commercial Real Estate Services, Worldwide.

www.naifarbman.com

Daniel McCleary
Vice President | 248.351.4384
mccleary@farbman.com

Nathan Casey
Vice President | 248.351.4391
casey@farbman.com

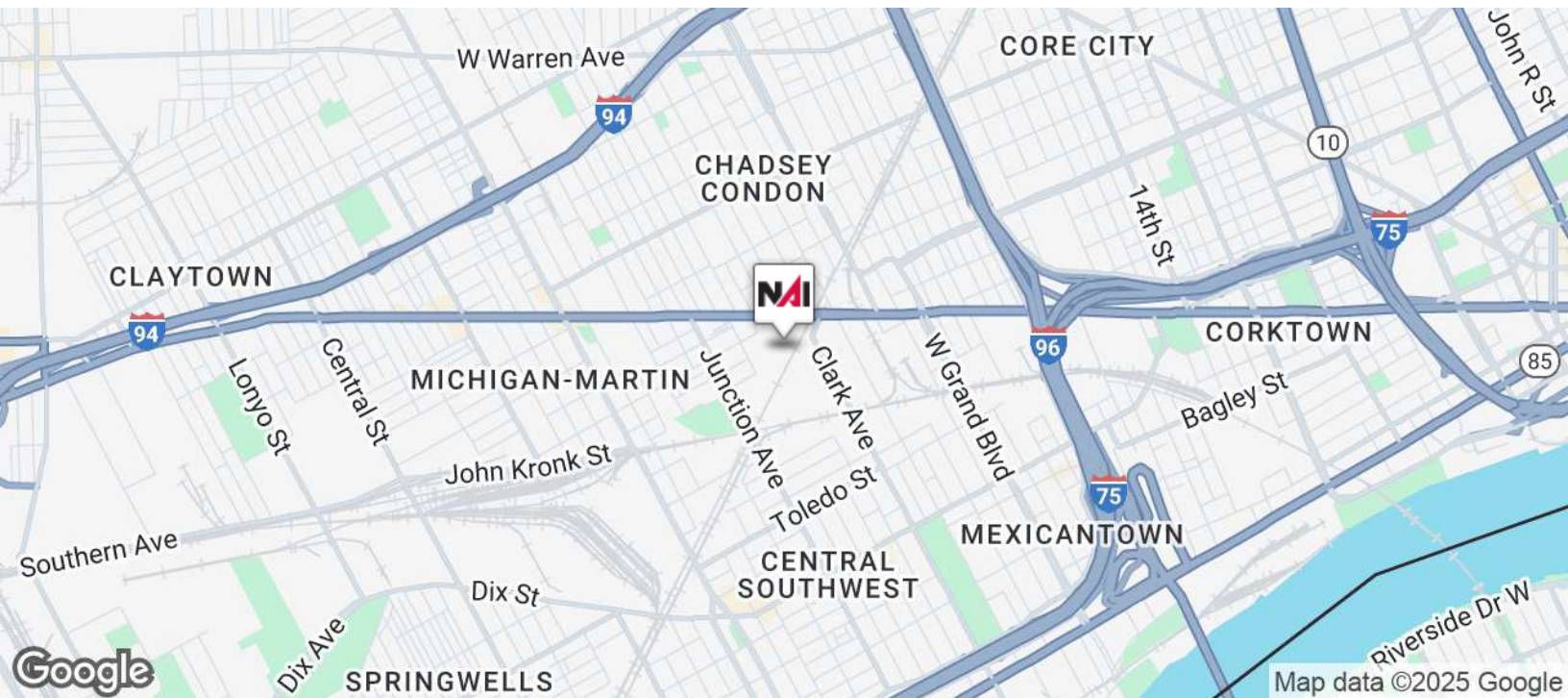
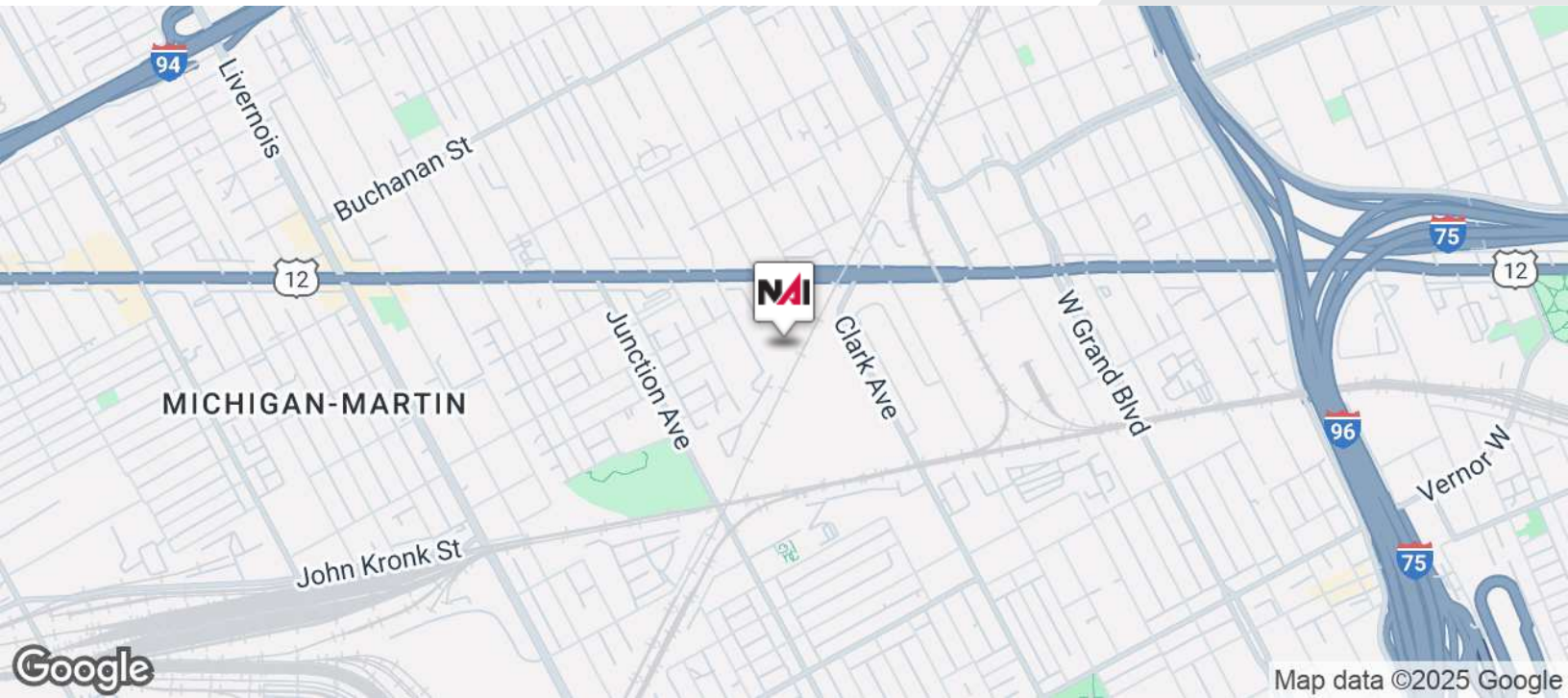
NO WARRANTY, EXPRESS OR IMPLIED, IS MADE AS TO THE ACCURACY OF THE INFORMATION CONTAINED HEREIN. THIS INFORMATION IS SUBMITTED SUBJECT TO ERRORS, OMISSIONS, CHANGE OF PRICE, RENTAL OR OTHER CONDITIONS, WITHDRAWAL WITHOUT NOTICE, AND IS SUBJECT TO ANY SPECIAL LISTING CONDITIONS IMPOSED BY OUR PRINCIPALS. COOPERATING BROKERS, BUYERS, TENANTS AND OTHER PARTIES WHO RECEIVE THIS DOCUMENT SHOULD NOT RELY ON IT, BUT SHOULD USE IT AS A STARTING POINT OF ANALYSIS, AND SHOULD INDEPENDENTLY CONFIRM THE ACCURACY OF THE INFORMATION CONTAINED HEREIN THROUGH A DUE DILIGENCE REVIEW OF THE BOOKS, RECORDS, FILES AND DOCUMENTS THAT CONSTITUTE RELIABLE SOURCES OF THE INFORMATION DESCRIBED HEREIN. LOGOS ARE FOR IDENTIFICATION PURPOSES ONLY AND MAY BE TRADEMARKS OF THEIR RESPECTIVE COMPANIES. NAI Farbman, INC. CA BRE LIC. #01990696.

7 ACRES + 12,000 SF WAREHOUSE + REPAIR GARAGE

LAND / WAREHOUSE



FOR LEASE



Commercial Real Estate Services, Worldwide.

www.naifarbman.com

Daniel McCleary

Vice President | 248.351.4384
mccleary@farbman.com

Nathan Casey

Vice President | 248.351.4391
casey@farbman.com

NO WARRANTY, EXPRESS OR IMPLIED, IS MADE AS TO THE ACCURACY OF THE INFORMATION CONTAINED HEREIN. THIS INFORMATION IS SUBMITTED SUBJECT TO ERRORS, OMISSIONS, CHANGE OF PRICE, RENTAL OR OTHER CONDITIONS, WITHDRAWAL WITHOUT NOTICE, AND IS SUBJECT TO ANY SPECIAL LISTING CONDITIONS IMPOSED BY OUR PRINCIPALS. COOPERATING BROKERS, BUYERS, TENANTS AND OTHER PARTIES WHO RECEIVE THIS DOCUMENT SHOULD NOT RELY ON IT, BUT SHOULD USE IT AS A STARTING POINT OF ANALYSIS, AND SHOULD INDEPENDENTLY CONFIRM THE ACCURACY OF THE INFORMATION CONTAINED HEREIN THROUGH A DUE DILIGENCE REVIEW OF THE BOOKS, RECORDS, FILES AND DOCUMENTS THAT CONSTITUTE RELIABLE SOURCES OF THE INFORMATION DESCRIBED HEREIN. LOGOS ARE FOR IDENTIFICATION PURPOSES ONLY AND MAY BE TRADEMARKS OF THEIR RESPECTIVE COMPANIES. NAI Farbman, INC. CA BRE LIC. #01990696.