

301
EAST LAS OLAS

Welcome to Plaza at Las Olas

301 E Las Olas Boulevard

[Click to view property video](#)



 On-site dining



EV charging stations in attached parking garage



Four blocks from Brightline station



On-site manned lobby security & secure building access



Get in touch:

Greg Martin
Principal, Managing Director -
Fort Lauderdale & Boca Raton
954 903 1815
greg.martin@avisonyoung.com

Justin Cope, SIOR
Principal
954 903 3701
justin.cope@avisonyoung.com

Lisa Blumer, CCIM
Principal
954 903 3703
lisa.blumer@avisonyoung.com

**AVISON
YOUNG**

About The Plaza at Last Olas

- Prime Las Olas Blvd. location with prominent signage opportunity
- Hurricane impact glass windows
- Onsite dining: YOLO, O Lounge, Java & Jam
- Onsite banking: Valley Bank, Bank United
- Proximity: 4 blocks from Brightline, 11 mins to Ft. Lauderdale Tri-Rail
- Adjacent to federal & county courthouses
- Manned lobby security
- Electric vehicle charging & reserved parking available
- Heart of Financial District with LEED® Gold certification



Get in touch:

Greg Martin

Principal, Managing Director -
Fort Lauderdale & Boca Raton
954 903 1815
greg.martin@avisonyoung.com

Justin Cope, SIOR

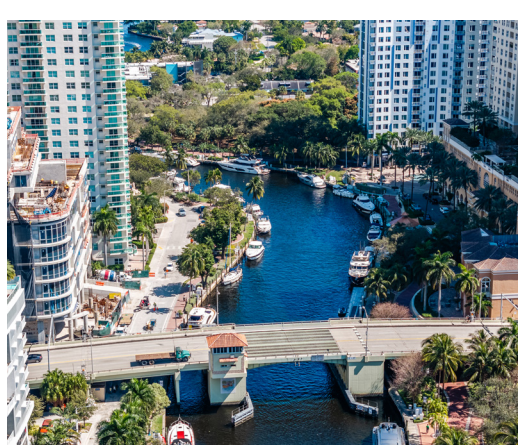
Principal
954 903 3701
justin.cope@avisonyoung.com

Lisa Blumer, CCIM

Principal
954 903 3703
lisa.blumer@avisonyoung.com

AVISON
YOUNG

Experience Las Olas: Downtown Delights & Destinations



Get in touch:

Greg Martin

Principal, Managing Director -
Fort Lauderdale & Boca Raton
954 903 1815
greg.martin@avisonyoung.com

Justin Cope, SIOR

Principal
954 903 3701
justin.cope@avisonyoung.com

Lisa Blumer, CCIM

Principal
954 903 3703
lisa.blumer@avisonyoung.com

AVISON
YOUNG

Full Floor office space for lease

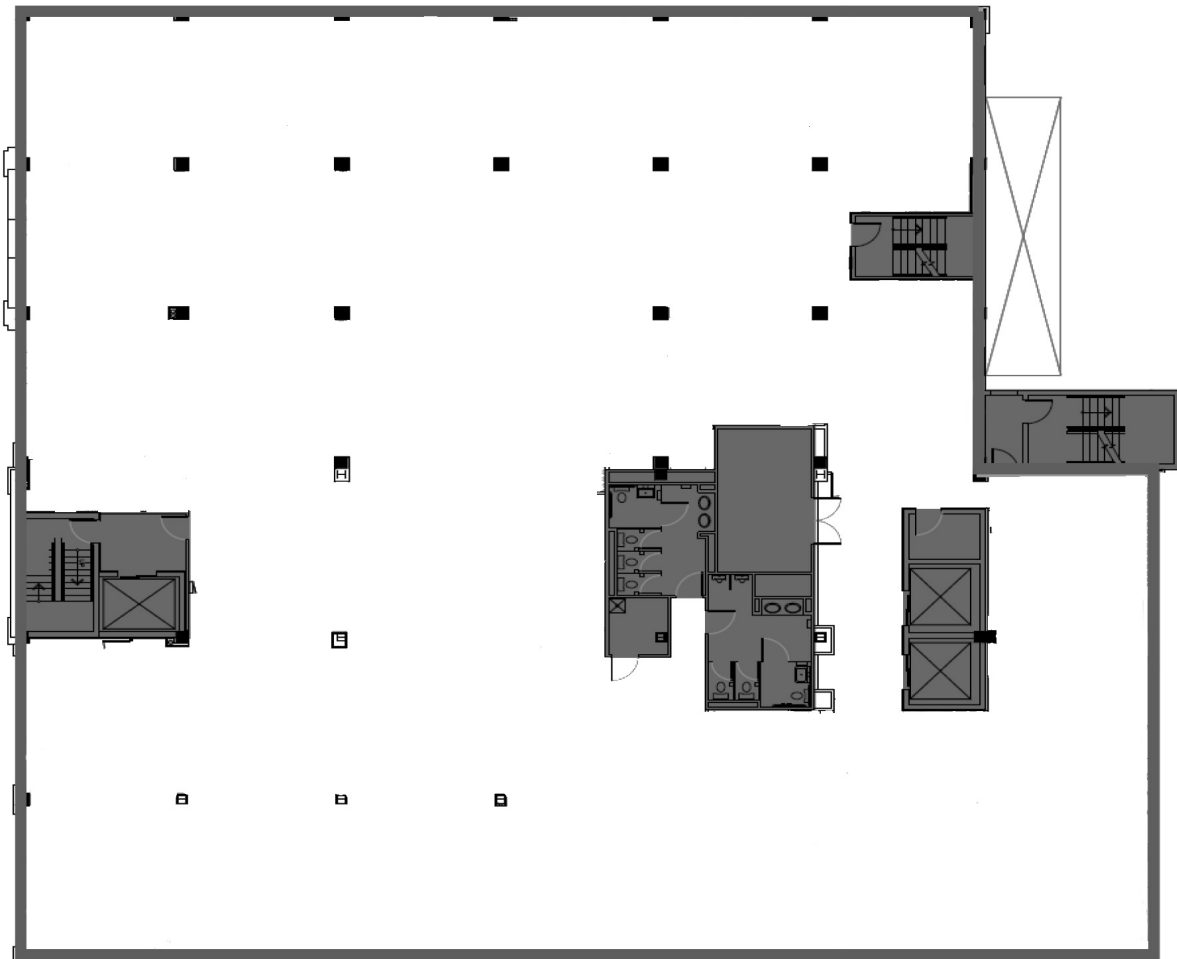
The Plaza at Las Olas

301 East Las Olas Boulevard | Fort Lauderdale, FL 33301

4th floor - 14,994 sf

Rental rate
\$35.00 psf NNN

Operating expenses
\$22.01 psf



Get in touch:

Greg Martin

Principal, Managing Director -
Fort Lauderdale & Boca Raton
954 903 1815
greg.martin@avisonyoung.com

Justin Cope, SIOR

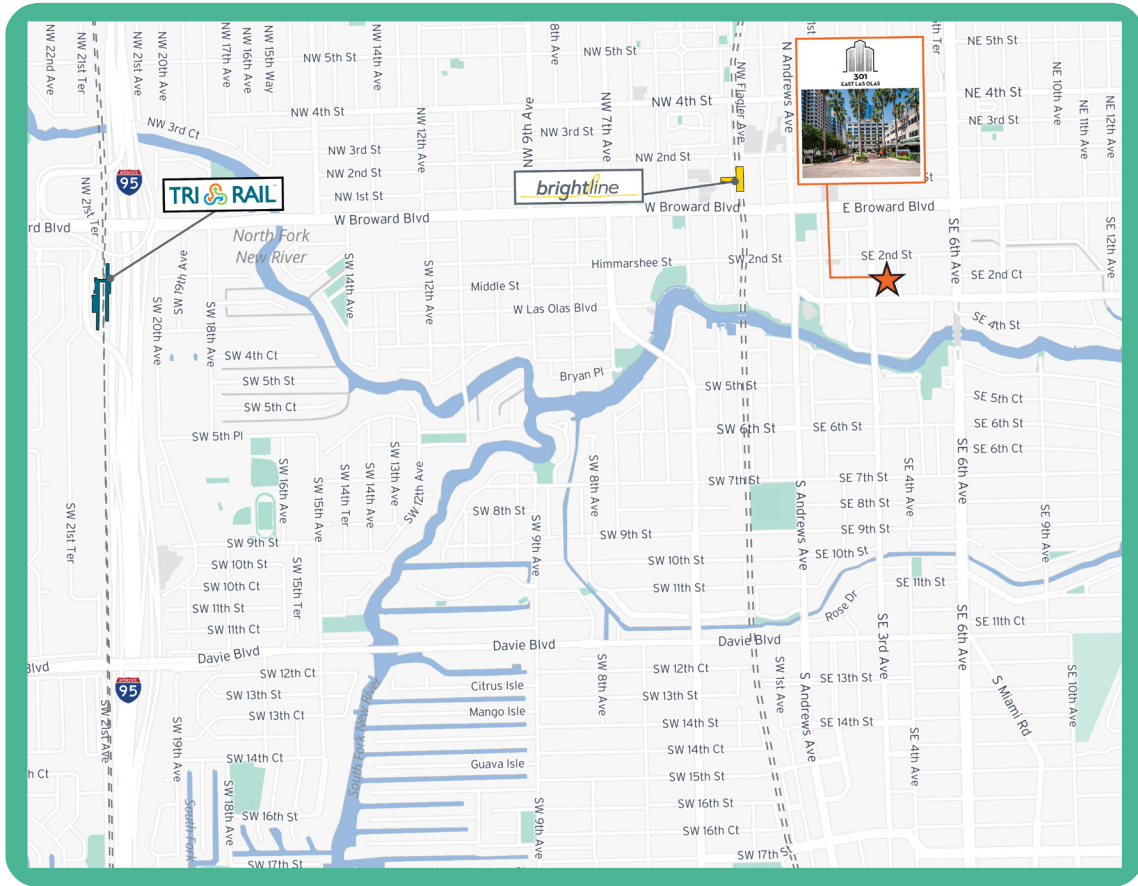
Principal
954 903 3701
justin.cope@avisonyoung.com

Lisa Blumer, CCIM

Principal
954 903 3703
lisa.blumer@avisonyoung.com

**AVISON
YOUNG**

Property Location



Travel times

	Distance	Travel time
Esplanade Park	0.6 miles	4 minutes
Brightline Fort Lauderdale Station	0.7 miles	5 minutes
Broward Health Medical Center	1.5 miles	5 minutes
I-95	2.9 miles	9 minutes
The Galleria at Fort Lauderdale	2.9 miles	10 minutes
Fort Lauderdale Tri Rail Station	3.0 miles	10 minutes
Fort Lauderdale International Airport	4.5 miles	12 minutes
Fort Lauderdale Beach	3.2 miles	12 minutes

Get in touch:

Greg Martin
Principal, Managing Director -
Fort Lauderdale & Boca Raton
954 903 1815
greg.martin@avisonyoung.com

Justin Cope, SIOR
Principal
954 903 3701
justin.cope@avisonyoung.com

Lisa Blumer, CCIM
Principal
954 903 3703
lisa.blumer@avisonyoung.com

**AVISON
YOUNG**