



135 Broad Street, Asheville, NC 28801



THE
**REAL
ESTATE**
CENTER

SPECIALIZING IN ASHVILLE'S URBAN MARKET

WEBSITE
MLS# 4266602

Greg Palombi

Cell: 828-216-4037

Office: 828-255-4663

gp@realasheville.net

159 S Lexington

Asheville, NC 28801

www.recenter.com

PROPERTY FEATURES

135 BROAD STREET, ASHEVILLE, NC 28801

Exceptional Mixed-Use Office & Residential Opportunity – Broad & Charlotte Street Rare opportunity to own a one-of-a-kind, high-quality mixed-use property in a prime location. Constructed to Type A+ standards, the main level features 8 private offices, a conference room, men's and women's restrooms, a welcoming lobby, a break room, and approximately 20 workstation areas. The upper level includes three fully furnished 1-bedroom apartments (approx. 610 SF, 559 SF, and 666 SF), each featuring vaulted ceilings, private balconies, marble countertops, ceramic tile flooring, in-unit laundry, and modern finishes. Apartments are in pristine condition with a 30-day minimum rental policy. The basement is full and temperature controlled with the location of the server room. Great safe storage. Additional highlights: Covered front porch, Natural gas, Backup generator, and Common areas Adjacent property at 137 Broad Street also available.

PROPERTY INFO

Listing Price: \$2,500,000

Parcel ID: 9649-53-7557-00000

County: Buncombe

Sqft: 4,268

Acres: 0.15

Zoning: CBI



135 BROAD STREET, ASHEVILLE, NC 28801



135 BROAD STREET, ASHEVILLE, NC 28801



135 BROAD STREET, ASHEVILLE, NC 28801



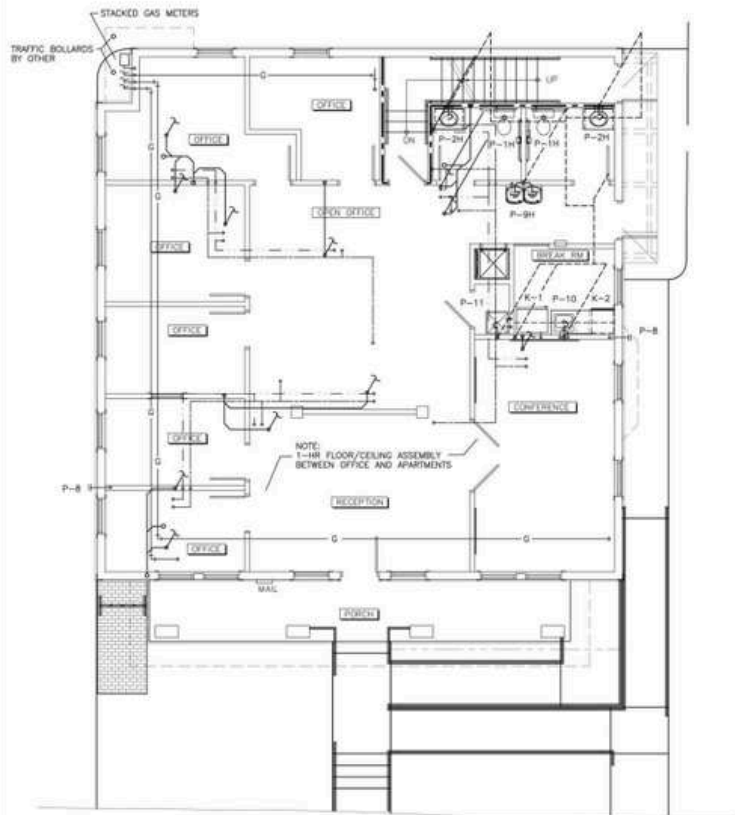
135 BROAD STREET, ASHEVILLE, NC 28801



135 BROAD STREET, ASHEVILLE, NC 28801

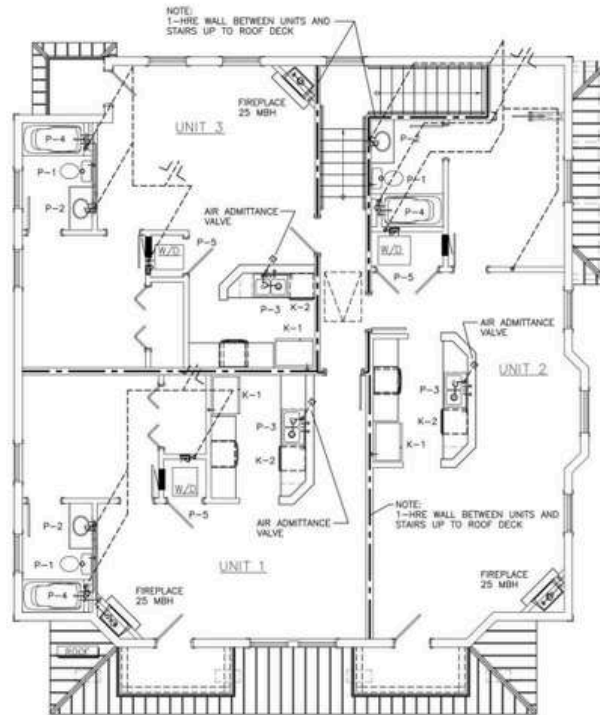


135 BROAD STREET, ASHEVILLE, NC 28801



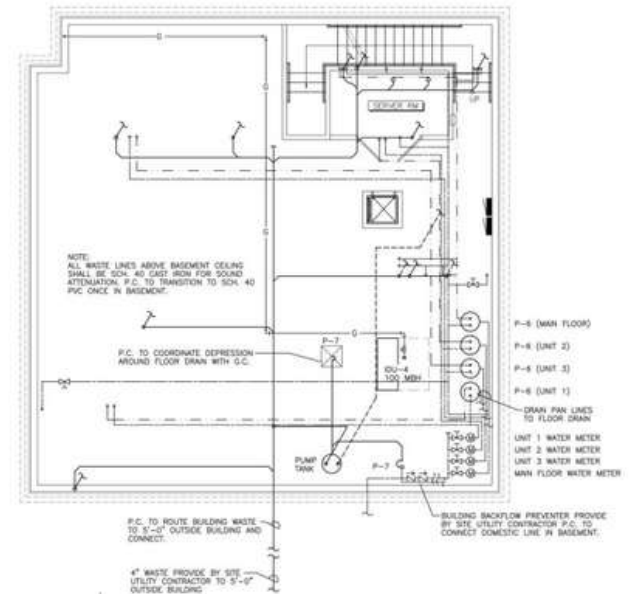
MAIN FLOOR PLUMBING PLAN

SCALE: 1/4" = 1'-0"



UPPER FLOOR PLUMBING PLAN

SCALE: 1/4" = 1'-0"



BASEMENT PLUMBING PLAN

SCALE: 1/4" = 1'-0"

GILLAM ENGINEERING, P.A.
CONSULTING ENGINEERS
1000 W. 10TH ST. SUITE 200
ASHEVILLE, NC 28801
TEL: 252.399.1000
FAX: 252.399.1001
www.gillameng.com

135 BROAD STREET, ASHEVILLE, NC 28801



135 BROAD STREET, ASHEVILLE, NC 28801

