



MEDICAL OFFICE SUITE FOR SALE OR LEASE

1011 Pemberton Hill Road

Apex, NC 27502

**AVISON
YOUNG**

Property overview

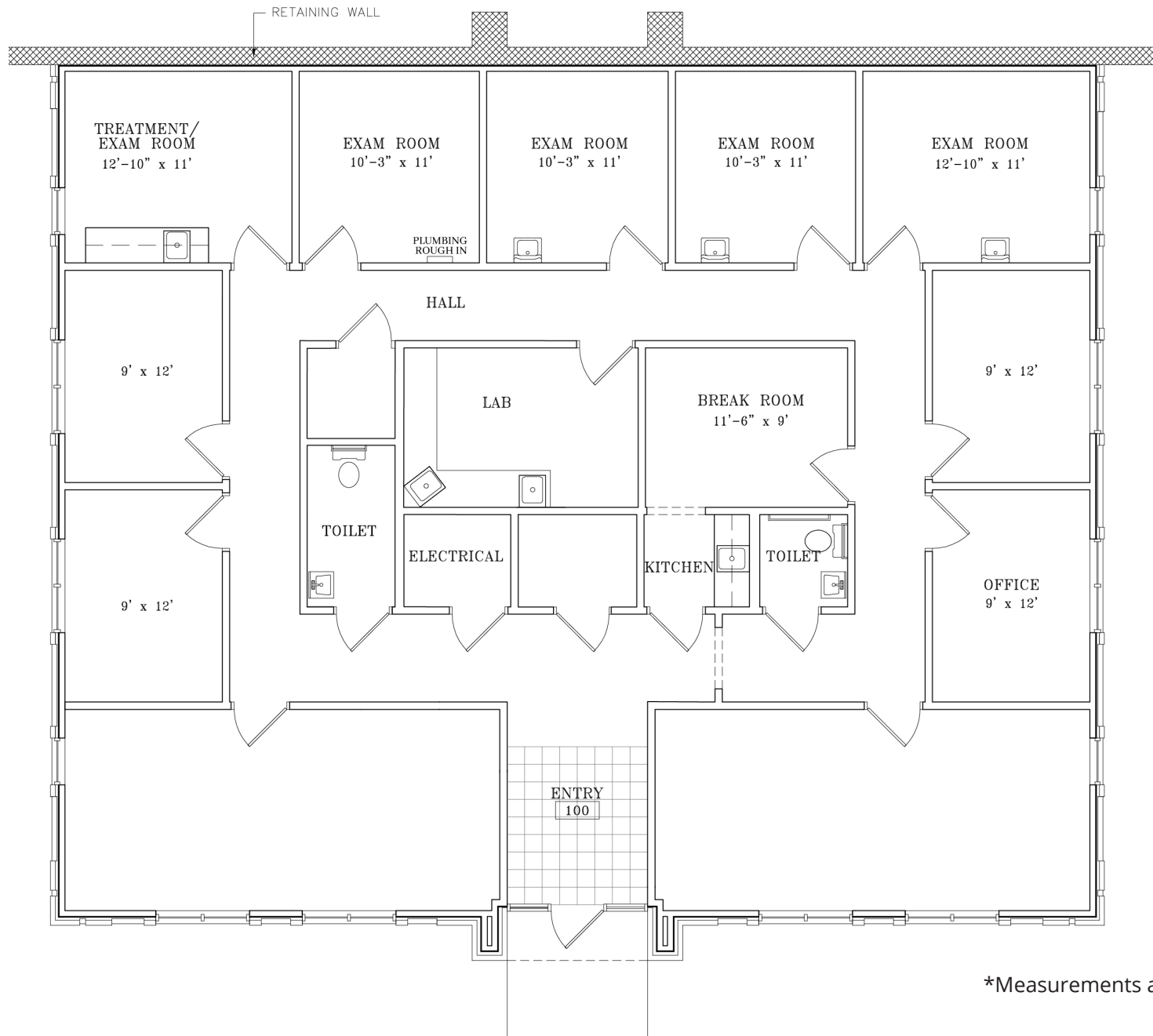
- Medical office suite for sale or lease in Apex Professional Park
- Located at the corner of NC Highway 55 and US Highway 64
- Visible building signage available
- Quick access to Downtown Apex
- Central location near numerous amenities

OFFERING SUMMARY

BUILDING PARK	Apex Professional Park
ADDRESS	1011 Pemberton Hill Road, Apex, NC 27502
SUITE	101
AVAILABLE SF	±3,024 SF
SALE PRICE	Call Broker for pricing
LEASE RATE	\$20.00/SF
PARKING	4.00/1,000 SF
MARKET	Raleigh/Durham
SUBMARKET	Southwest Wake County



Floor plan



*Measurements are approximate



**AVISON
YOUNG**

for more information, please contact:

Baxter M. Walker, III, SIOR, CCIM
Principal
919 913 1118
baxter.walker@avisonyoung.com