

450-480 E ROOSEVELT RD WEST CHICAGO, IL

Prairie Center Office

Units Available For Lease

RAWLY LANTZ, SIOR
(630) 729-744
rlantz@cawleycre.com

JUSTIN HARRIS
(630) 810-1897
jharris@cawleycre.com



Lease Availability

Building	Suite	Total SF
450		Up to 10,143 SF
480	202	2,538 SF

Pricing

Lease Rate: \$13.00 PSF Modified Gross

Highlights

- ✓ Individual units offer immediate occupancy
- ✓ 3-building complex with expansion potential
- ✓ High-profile
- ✓ Energy efficient
- ✓ Two-story entrance with marble and oak
- ✓ Sound deadening barriers between suites
- ✓ Located minutes from I-88
- ✓ Build to suit land available
- ✓ Parking: 4.00/1,000 SF



450 E ROOSEVELT RD
WEST CHICAGO, IL

Prairie Center Office

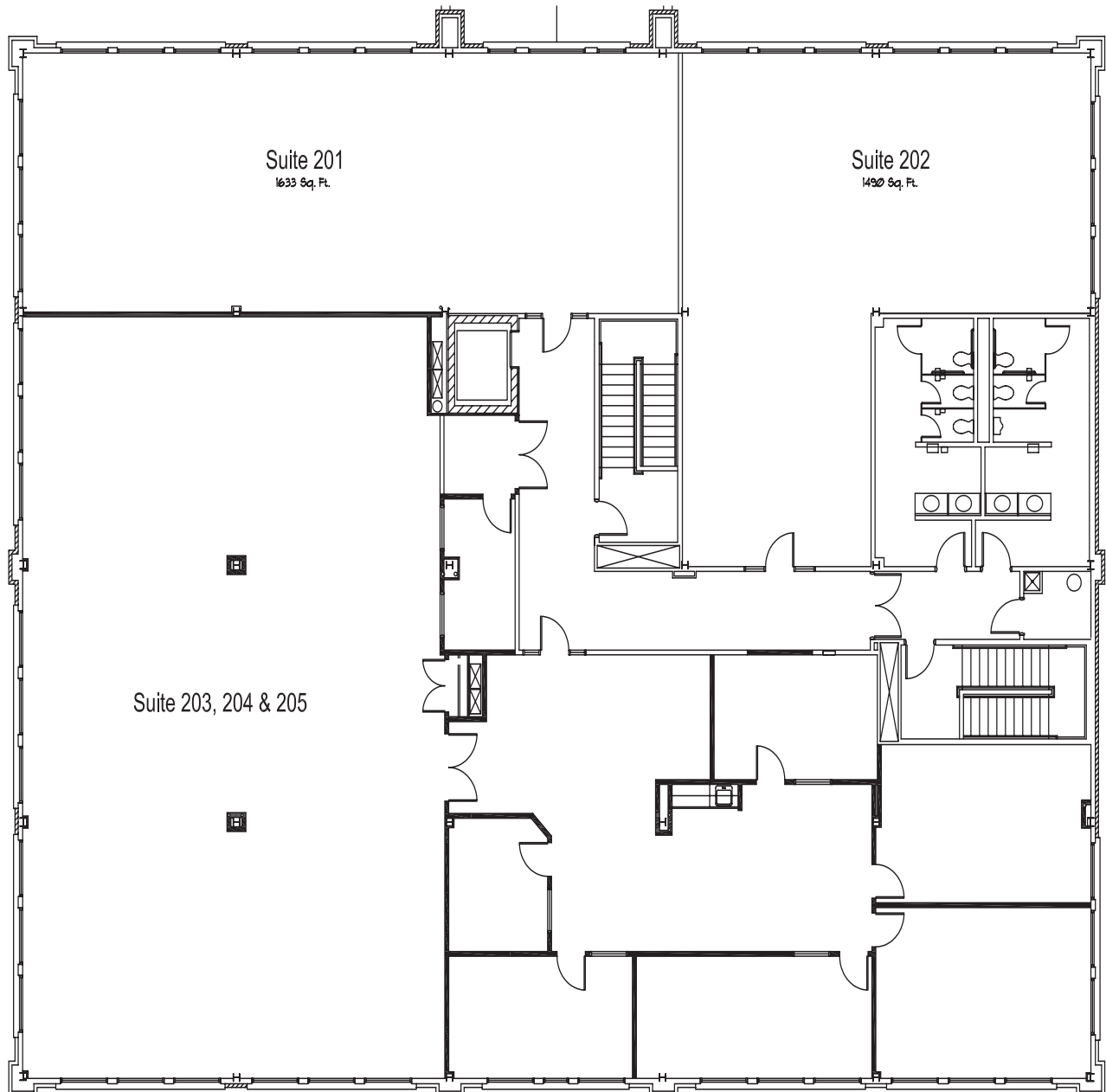
Units Available For Lease

RAWLY LANTZ, SIOR
(630) 729-744
rlantz@cawleycre.com

JUSTIN HARRIS
(630) 810-1897
jharris@cawleycre.com

Building 450 | Full Floor

up to 10,147 SF



480 E ROOSEVELT RD
WEST CHICAGO, IL

Prairie Center Office

Units Available For Lease

RAWLY LANTZ, SIOR
(630) 729-744
rlantz@cawleycre.com

JUSTIN HARRIS
(630) 810-1897
jharris@cawleycre.com

Building 480 | Suite 202

2,538 SF

