

8,400 SF WAREHOUSE FOR LEASE

NEW  
Walmart \* Home Office

# 908 SE 21ST STREET



20,000 VPD

SE 21ST ST

SE 1 STREET

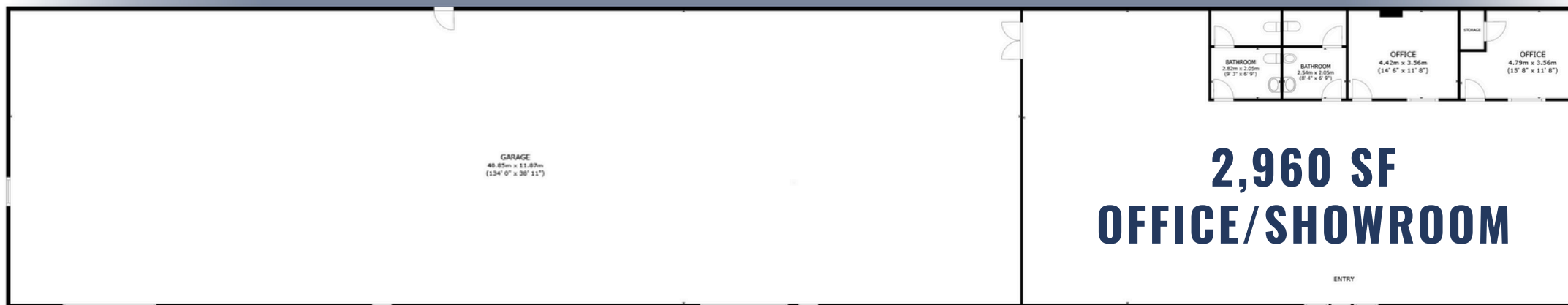


**PALMER HAYS**, SIOR MEMBER ASSOCIATE  
INDUSTRIAL & LAND SPECIALIST  
479.466.8499  
PALMER@BENNETTCRE.COM

360° VIRTUAL TOUR



### 360° VIRTUAL TOUR



**ADDRESS** 908 SE 21ST STREET

**CITY, STATE** BENTONVILLE, AR

**AVAILABLE** 8,400 SF

**ASKING RENT** \$13.50 PSF | NNN

**ROLL-UP DOORS** 2 (10' x 10')

**CLEAR HEIGHT** 11'

**BUILDING DIMENSIONS** 210' x 40'

**DOCK** 2

**YEAR BUILT** 1991

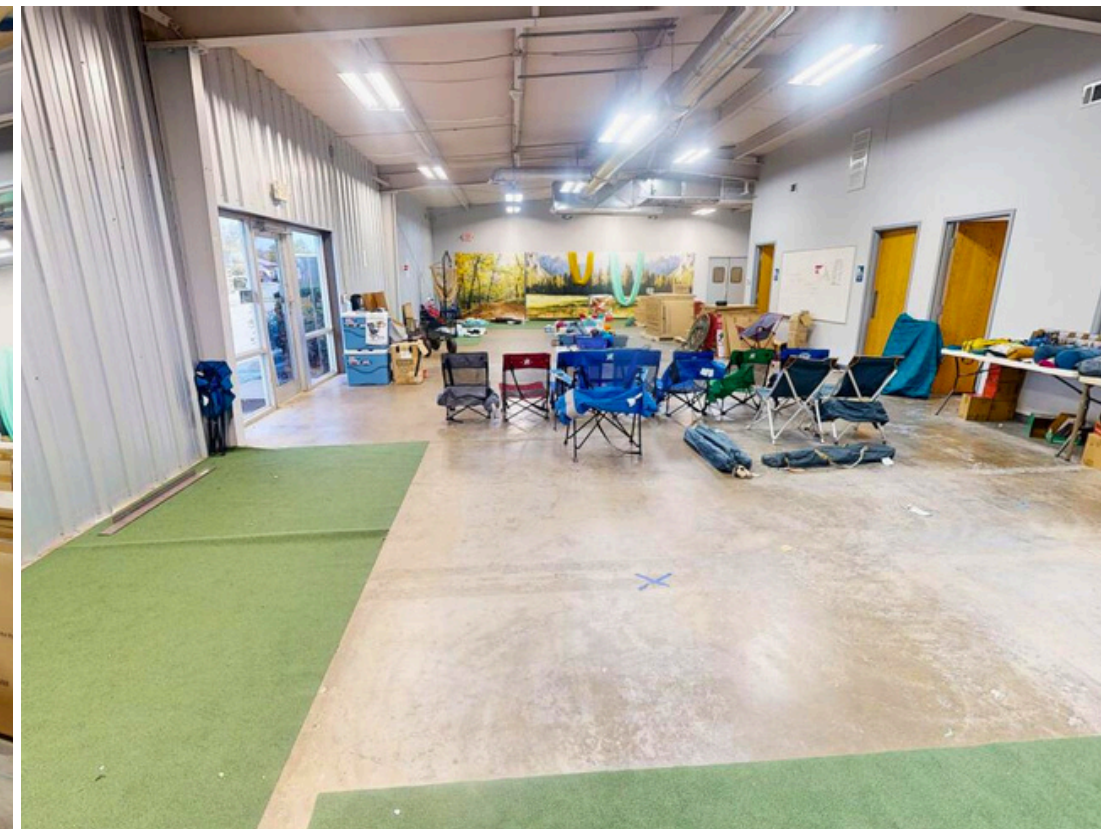
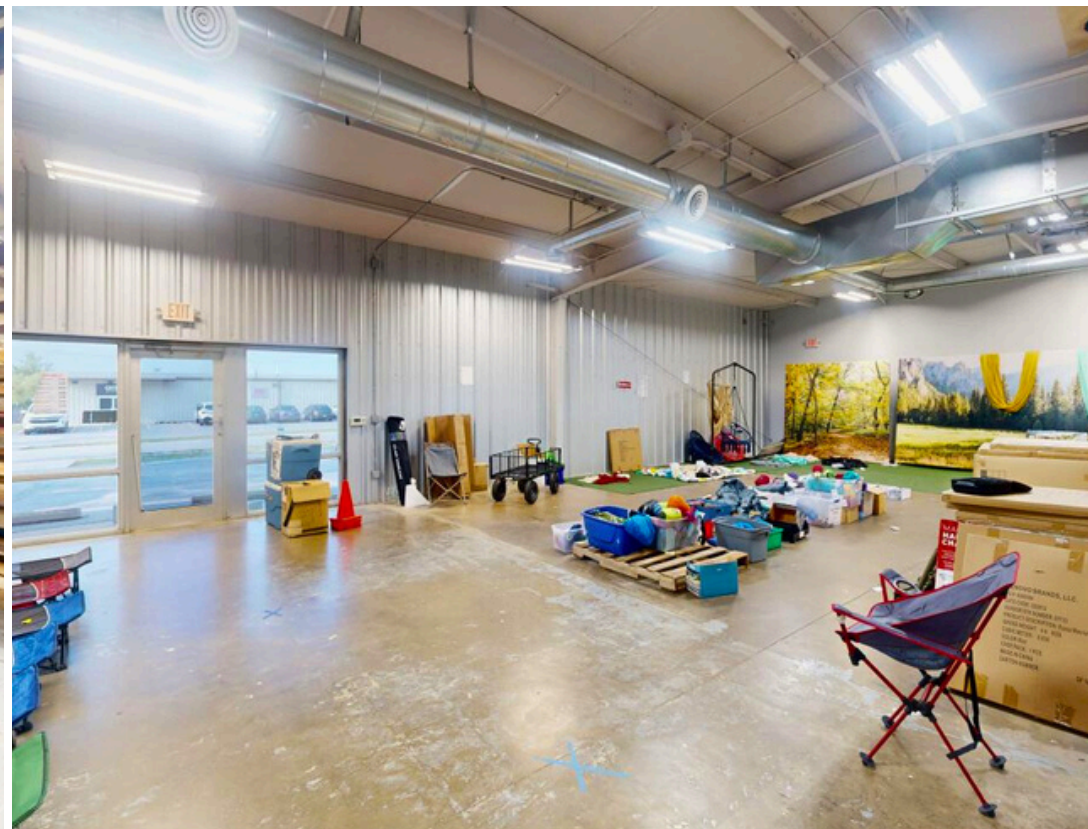
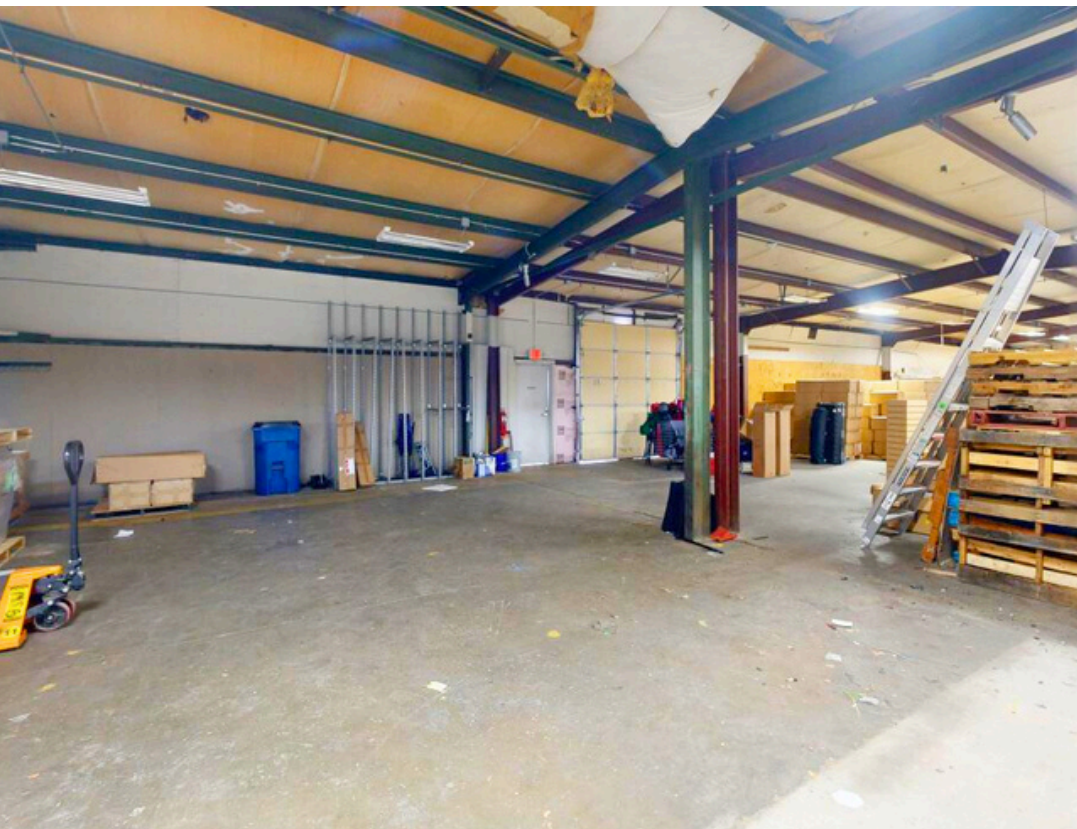
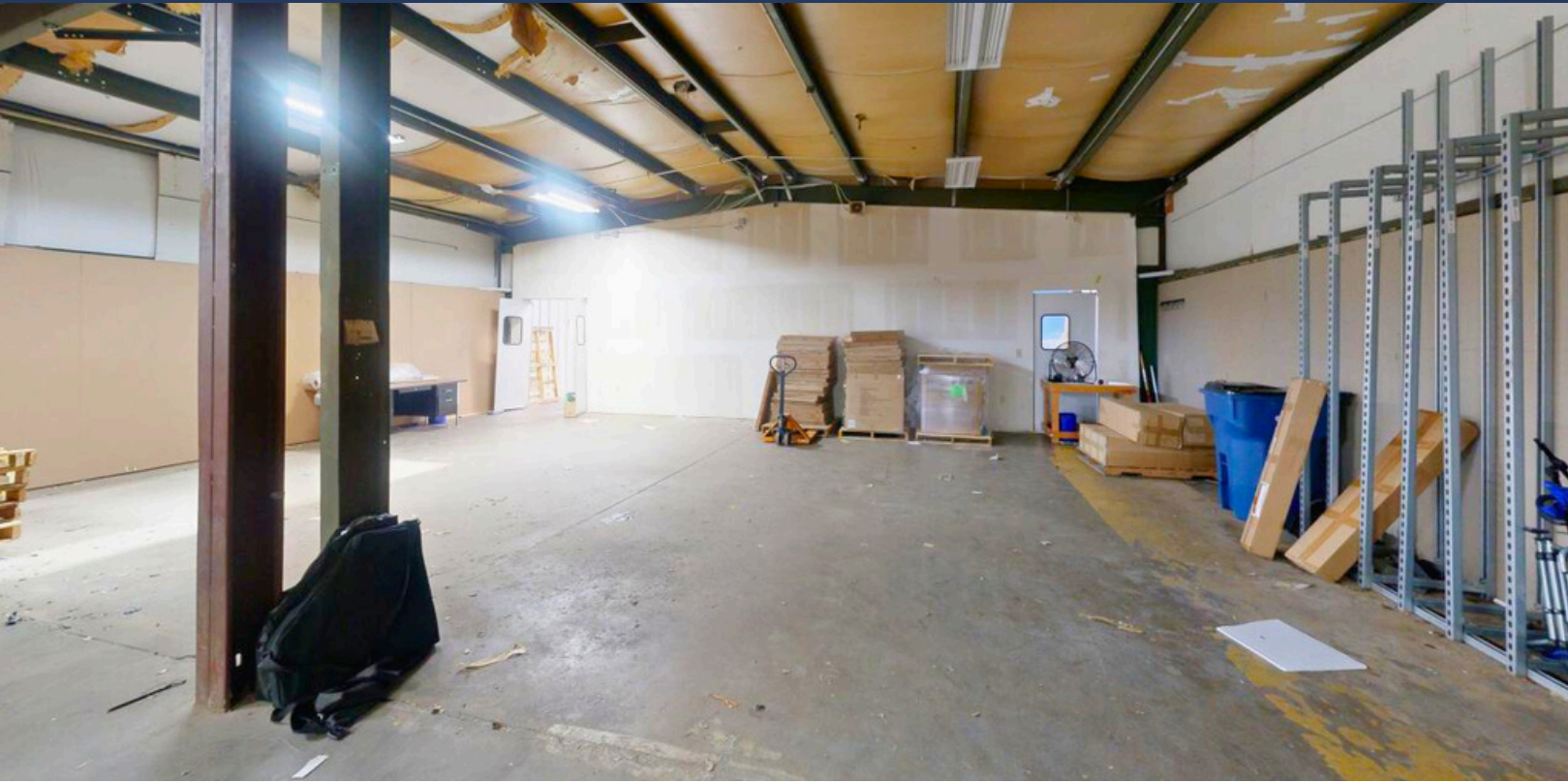
**PARKING** 18 SPACES

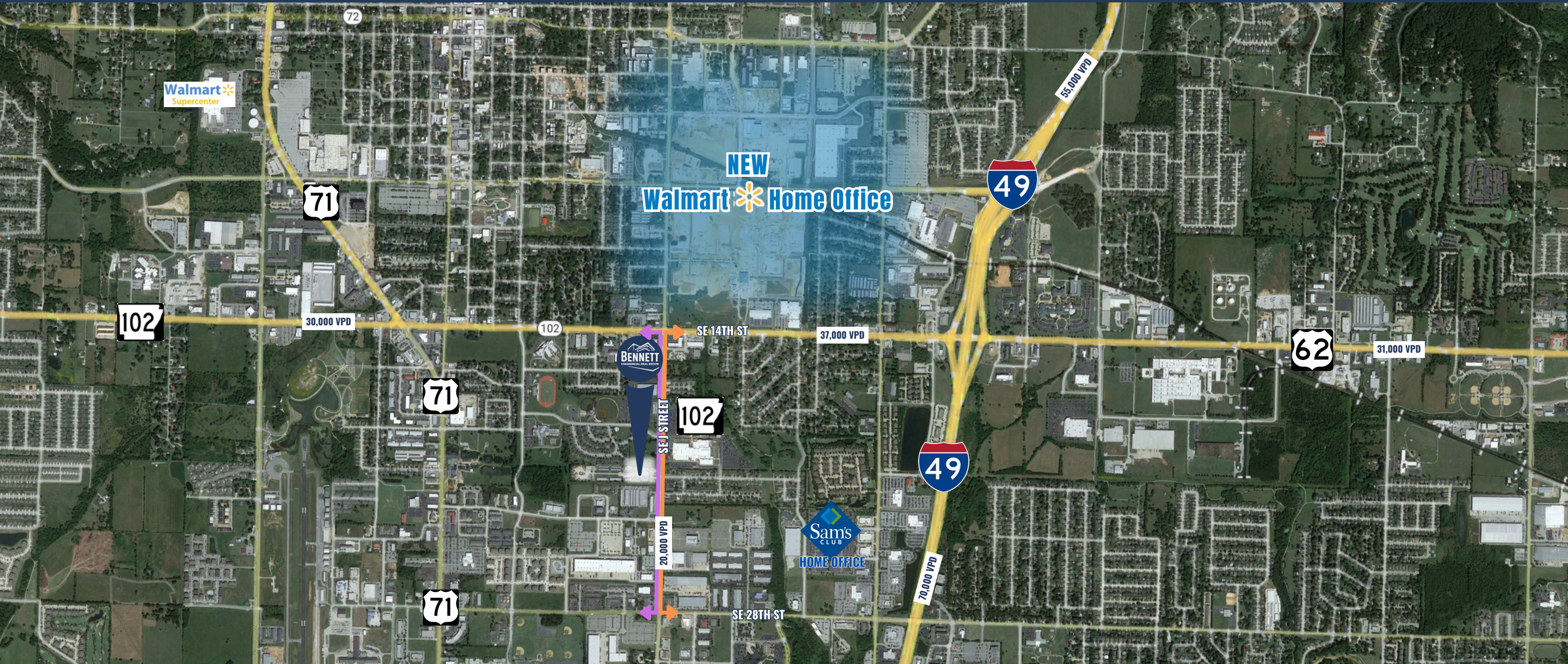
**OFFICE/SHOWROOM SPACE** 2,960 SF

**LESS THAN A MILE AWAY FROM WALMART WORLD HQ**



**PALMER HAYS**, SIOR MEMBER ASSOCIATE  
INDUSTRIAL & LAND SPECIALIST  
479.466.8499  
PALMER@BENNETTCRE.COM





**INTERSTATE-49**

1.4 MILES 4 MIN

**HWY 71-B**

1.5 MILES 5 MIN

**WALMART HOME OFFICE**

0.9 MILES 3 MIN

**SAM'S CLUB HOME OFFICE**

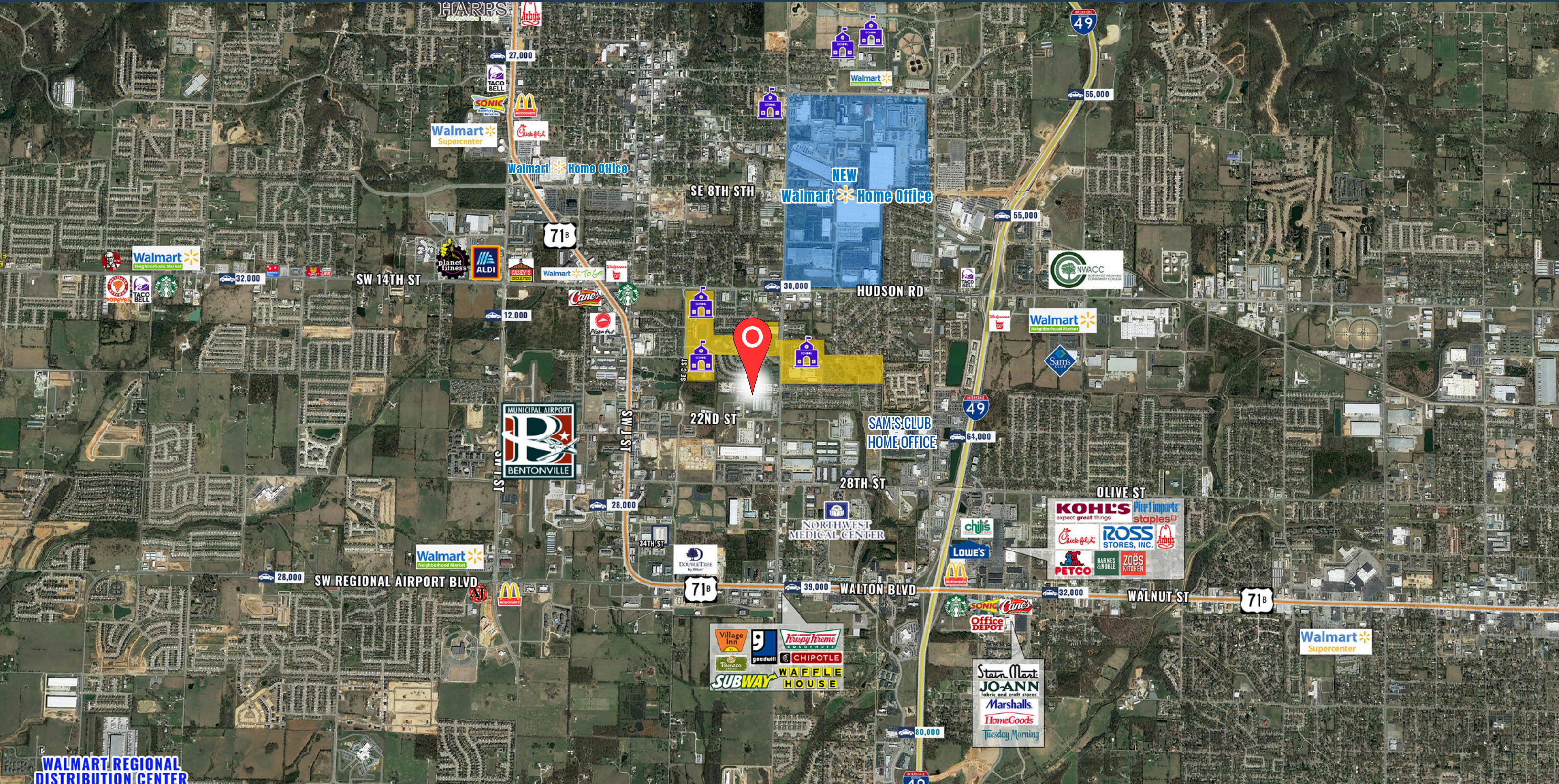
0.9 MILES 3 MIN

**NORTHWEST ARKANSAS AIRPORT**

12 MILES 20 MIN



**PALMER HAYS**, SIOR MEMBER ASSOCIATE  
INDUSTRIAL & LAND SPECIALIST  
479.466.8499  
PALMER@BENNETTCRE.COM

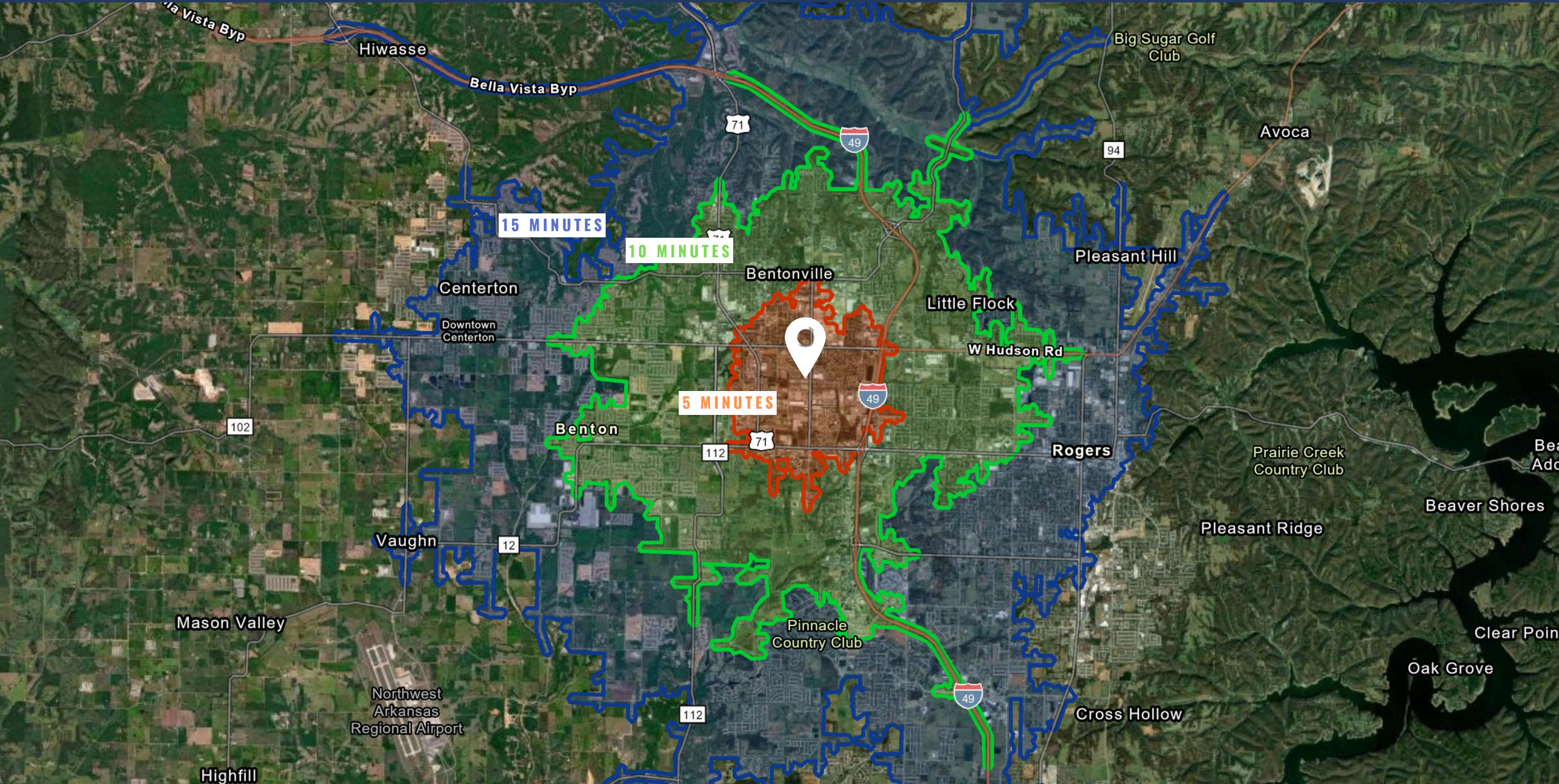


WALMART REGIONAL DISTRIBUTION CENTER



**PALMER HAYS**, SIOR MEMBER ASSOCIATE  
INDUSTRIAL & LAND SPECIALIST  
479.466.8499  
PALMER@BENNETTCRE.COM

5112 WEST WALSH LN, #201, ROGERS, AR 72758 | 479.278.4040 | BENNETTCRE.COM



**PALMER HAYS**, SIOR MEMBER ASSOCIATE  
INDUSTRIAL & LAND SPECIALIST  
479.466.8499  
PALMER@BENNETTCRE.COM



# BENNETT

COMMERCIAL REAL ESTATE

**PALMER HAYS**

INDUSTRIAL & LAND SPECIALIST

479.466.8499

[PALMER@BENNETTCRE.COM](mailto:PALMER@BENNETTCRE.COM)

5512 WEST WALSH LN, #201, ROGERS, AR 72758 | 479.278.4040 | [BENNETTCRE.COM](http://BENNETTCRE.COM)