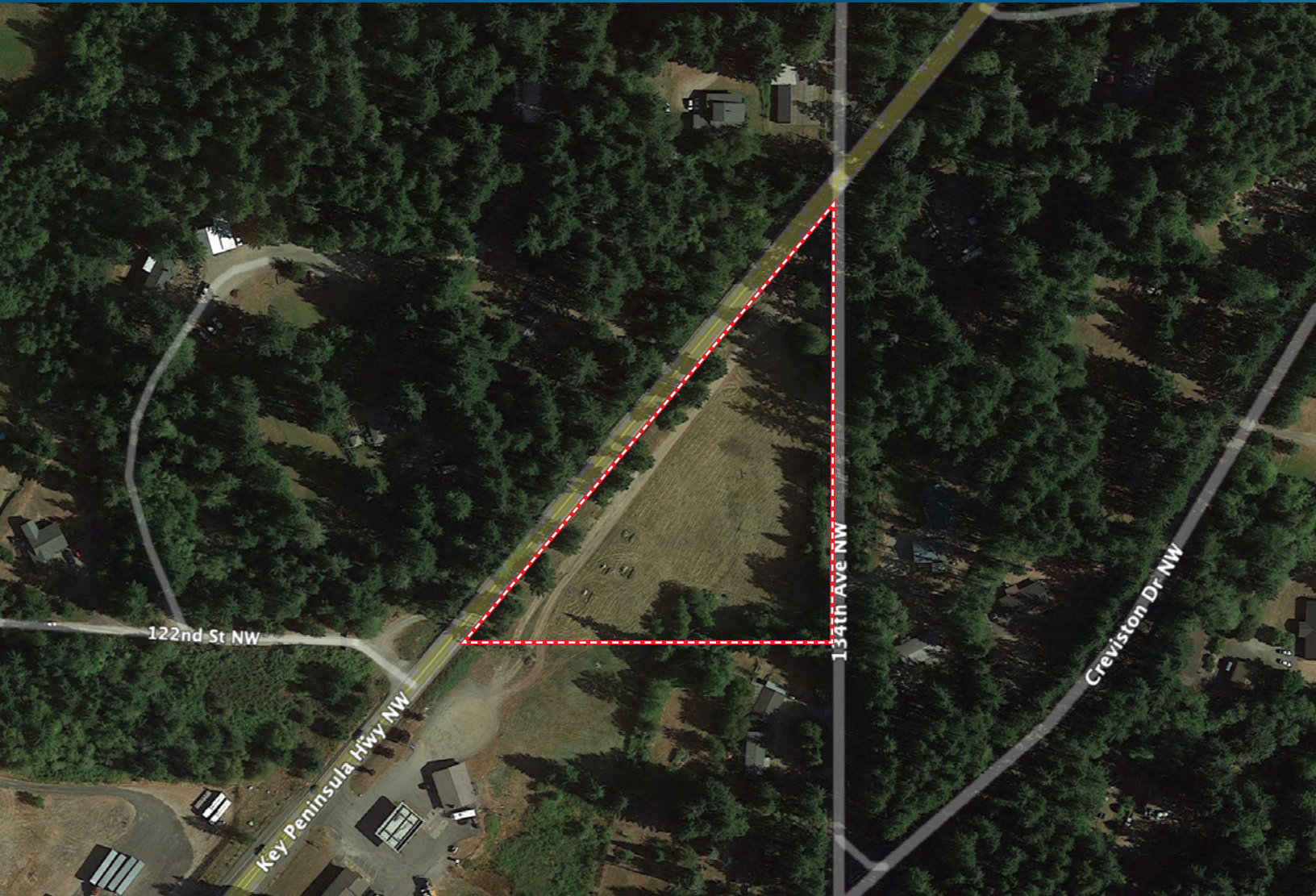


KEY PENINSULA LAND

FOR SALE OR LEASE

12221 KEY PENINSULA HWY NW | GIG HARBOR, WA



SALE & LEASE INFORMATION

Land Size: 2.718 Acres (118,330 SF)

Pricing: Call Broker

PROPERTY HIGHLIGHTS

- 4 parcels totaling 2.718 acres along Key Peninsula Hwy
- Zoned RNC which allows for multiple different uses
- Scan or click the QR code to the right to see if the zoning matches your needs



BRIANA HICKEY
253.779.2424

bhickey@neilwalter.com

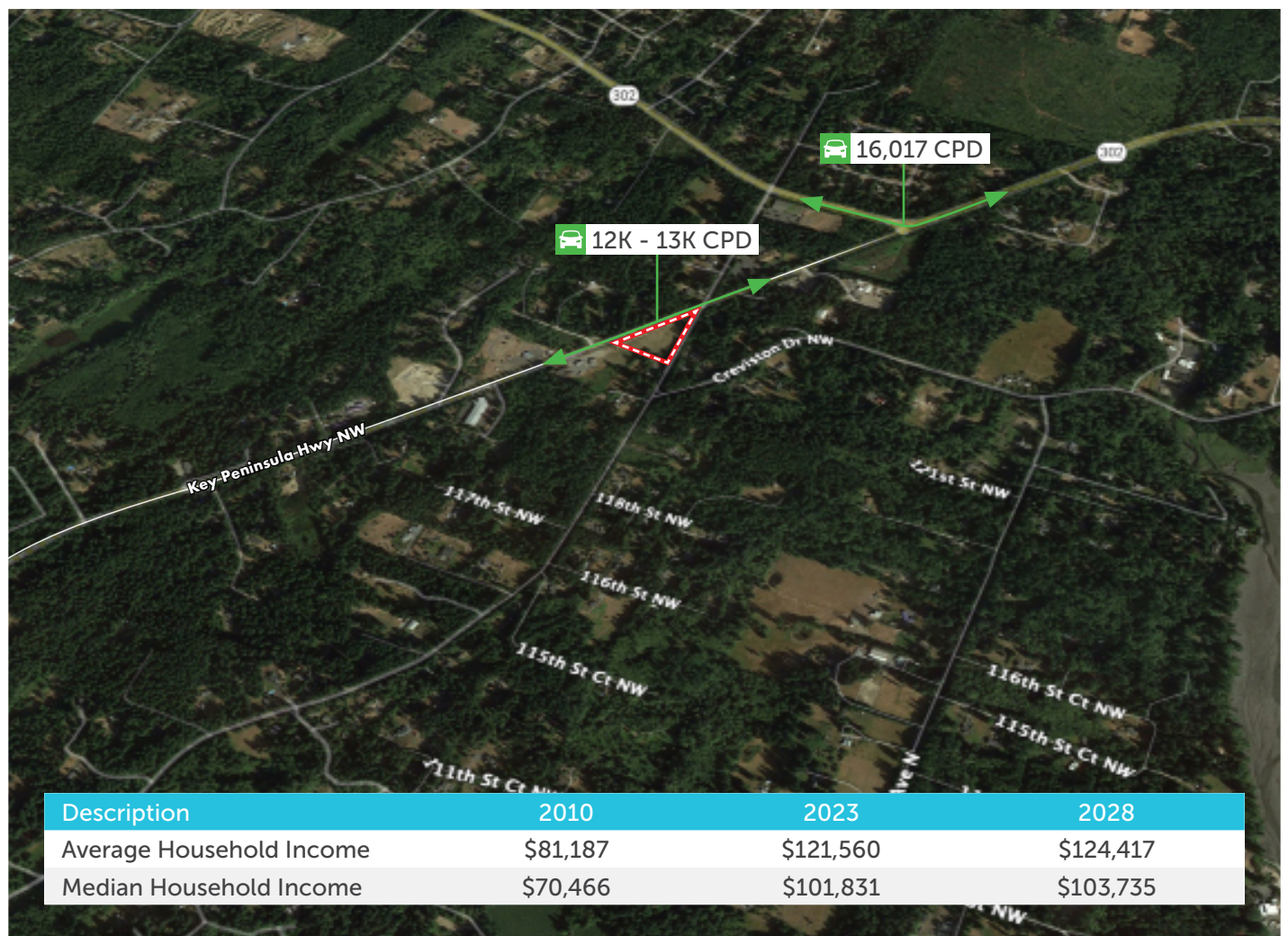
BRUCE VALENTINE
253.779.2400

bvalentine@neilwalter.com

All information references in this document are approximate. The information contained herein is contained from sources deemed reliable. It is provided without representation, warranty, or guarantee, expressed or implied as to accuracy. Prospective buyer or tenant should conduct its own independent investigation relating to the property, government codes and regulations, allowed uses, and all other matters, regardless of whether they are referred to or contained in this document.

KEY PENINSULA LAND

12221 KEY PENINSULA HWY NW | GIG HARBOR, WA



BRIANA HICKEY
253.779.2424
bhickey@neilwalter.com

BRUCE VALENTINE
253.779.2400
bvalentine@neilwalter.com

1940 East D St #100
Tacoma, WA 98421
253.779.8400
www.neilwalter.com

All information references in this document are approximate. The information contained herein is contained from sources deemed reliable. It is provided without representation, warranty, or guarantee, expressed or implied as to accuracy. Prospective buyer or tenant should conduct its own independent investigation relating to the property, government codes and regulations, allowed uses, and all other matters, regardless of whether they are referred to or contained in this document.