



Specifications

- ±6.94 AC TOTAL ACREAGE
- ±30,000 SF TOTAL BUILDING
- ±25,000 SF WAREHOUSE
- ±5,000 SF MEZZANINE OFFICE
- 12 DI and 2 TB LOADING
- 45' to Deck
- 40' Clear (33' Under Crane) CEILING HEIGHT
- Paved, Fenced, Lit DELIVERY CONDITIONS
- Gas Suspended HEAT
- Wet System SPRINKLER
- 35 & 5-Ton Cranes CRANES
- Industrial (I-3) ZONING

For additional property information or to arrange an inspection, please contact the exclusive brokers:

Jason M. Crimmins, CCIM, SIOR
Chief Executive Officer
 973.379.6644 x 122
 jmcrimmins@blauberg.com

Alessandro (Alex) Conte, CCIM, SIOR
President
 973.379.6644 x 131
 acont@blauberg.com

Peter J. Murano, Jr., SIOR
Managing Executive Director
 973.379.6644 x 114
 pjmurano@blauberg.com

FOR LEASE | 449 DOREMUS AVENUE | NEWARK, NJ



For additional property information or to arrange an inspection, please contact the exclusive brokers:

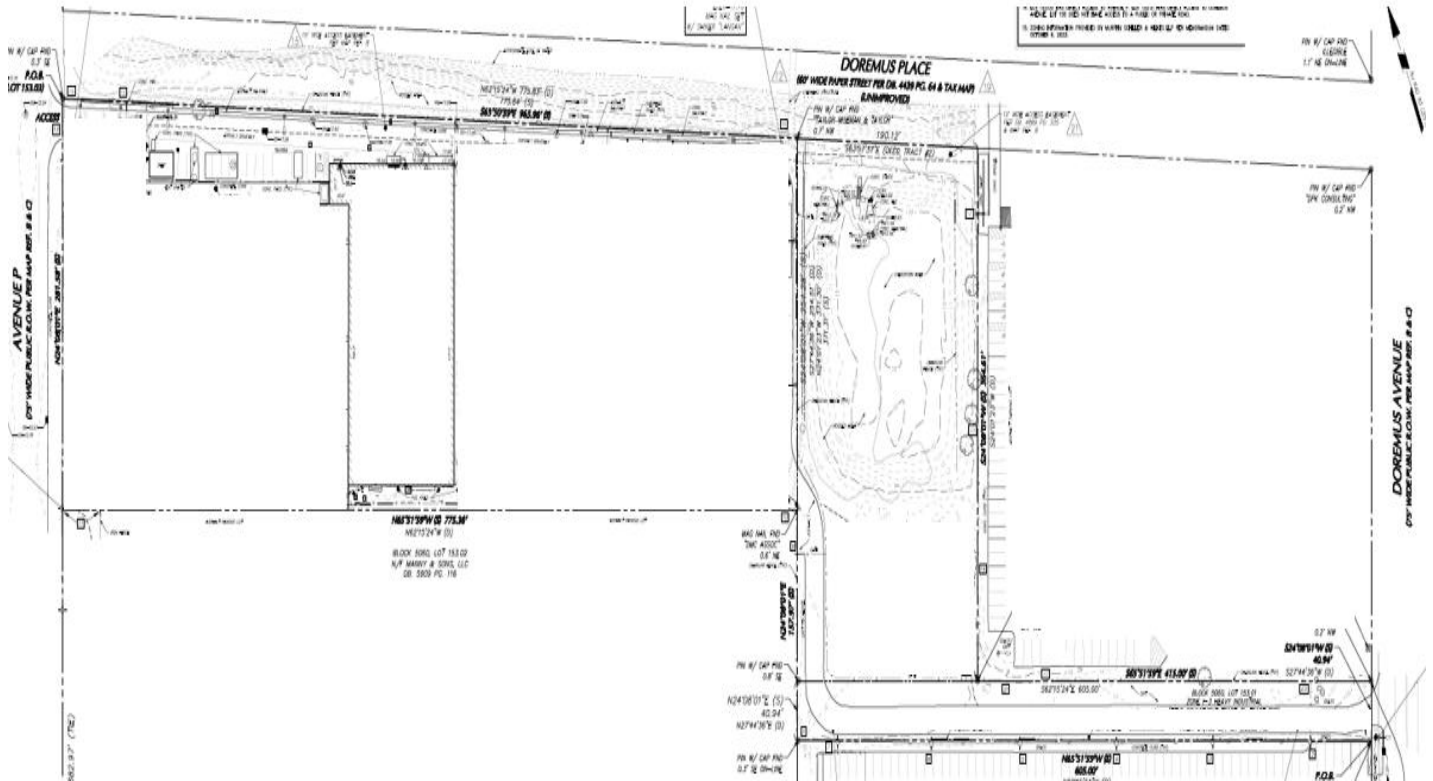
Jason M. Crimmins, CCIM, SIOR
Chief Executive Officer
973.379.6644 x 122
jmcrimmins@blauberg.com

Alessandro (Alex) Conte, CCIM, SIOR
President
973.379.6644 x 131
aconte@blauberg.com

Peter J. Murano, Jr., SIOR
Managing Executive Director
973.379.6644 x 114
pjmurano@blauberg.com

The information contained herein has been obtained from sources considered to be reliable, but no guarantee of its accuracy is made by this company. In addition, no representation is made respecting zoning, condition of title, dimensions, or any matters of a legal or environmental nature. Such matters should be referred to legal counsel for determination. Terms and conditions are subject to change without prior notice. Subject to errors and omissions.

FOR LEASE | 449 DOREMUS AVENUE | NEWARK, NJ



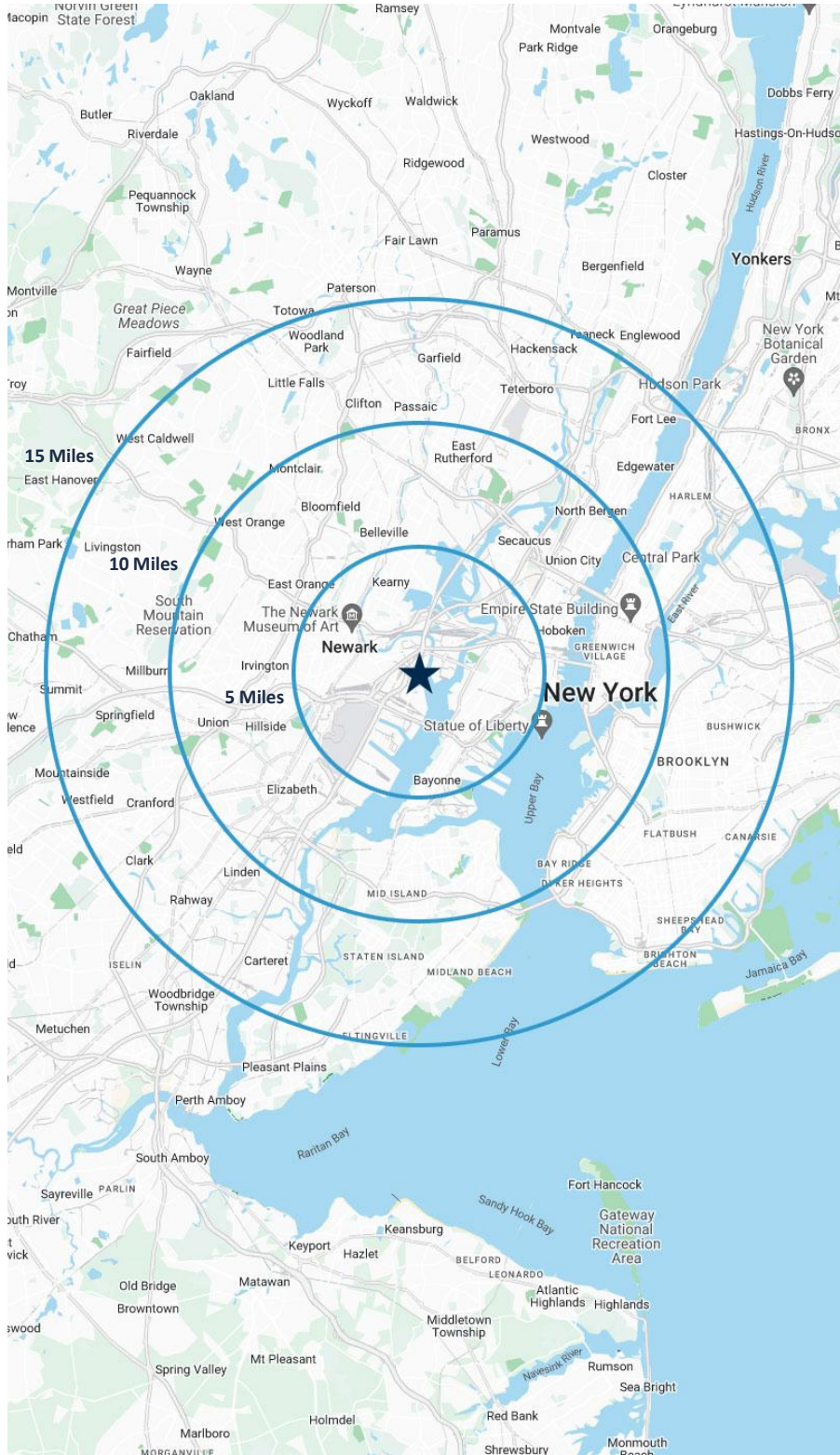
For additional property information or to arrange an inspection, please contact the exclusive brokers:

Jason M. Crimmins, CCIM, SIOR
 Chief Executive Officer
 973.379.6644 x 122
 jmcrimmins@blauberg.com

Alessandro (Alex) Conte, CCIM, SIOR
 President
 973.379.6644 x 131
 acont@blauberg.com

Peter J. Murano, Jr., SIOR
 Managing Executive Director
 973.379.6644 x 114
 pjmurano@blauberg.com

The information contained herein has been obtained from sources considered to be reliable, but no guarantee of its accuracy is made by this company. In addition, no representation is made respecting zoning, condition of title, dimensions, or any matters of a legal or environmental nature. Such matters should be referred to legal counsel for determination. Terms and conditions are subject to change without prior notice. Subject to errors and omissions.



5 MILES

- Total Population: 748,552
- Households: 292,237
- Median Household Income: \$86,696
- Average Household Size: 2.5
- Transportation to Work: 384,751
- Labor Force: 603,825

10 MILES

- Total Population: 4.41M
- Households: 1.85M
- Median Household Income: \$114,597
- Average Household Size: 2.3
- Transportation to Work: 2.38M
- Labor Force: 3.63M

15 MILES

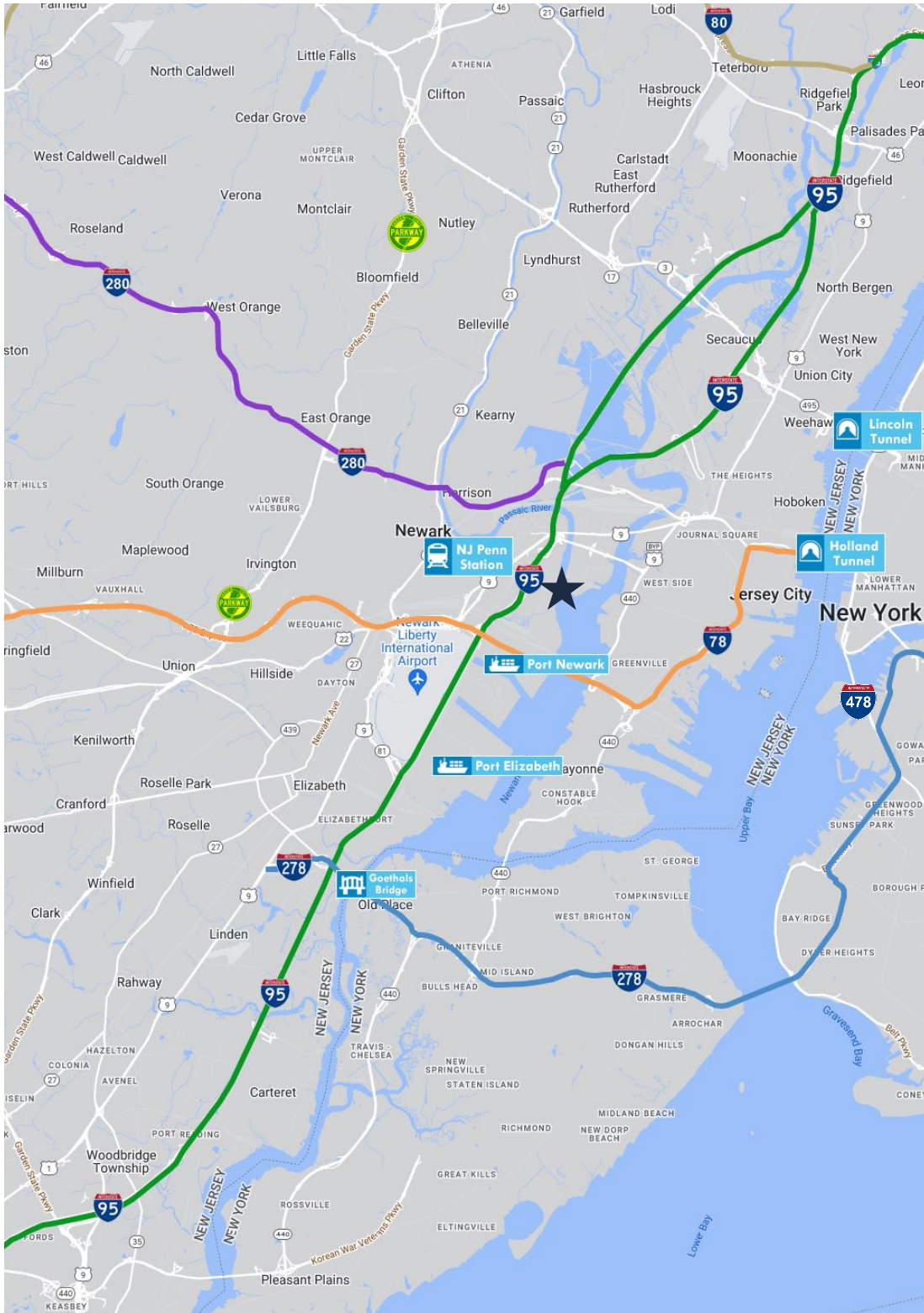
- Total Population: 9.32M
- Households: 3.66M
- Median Household Income: \$100,562
- Average Household Size: 2.5
- Transportation to Work: 4.78M
- Labor Force: 7.63M

For additional property information or to arrange an inspection, please contact the exclusive brokers:

Jason M. Crimmins, CCIM, SIOR
Chief Executive Officer
973.379.6644 x 122
jmcrimmins@blauberg.com

Alessandro (Alex) Conte, CCIM, SIOR
President
973.379.6644 x 131
aconte@blauberg.com


Peter J. Murano, Jr., SIOR
Managing Executive Director
973.379.6644 x 114
pjmurano@blauberg.com




ACCESSIBILITY


 0.8 MI
US Hwy 1 & 9

 2 MI
Ports Newark & Elizabeth

 2.5 MI
I-95 Exit 14

 3.2 MI
I-78


 3.6 MI
I-280

 3.7 MI
Penn Station

 4.2 MI
Newark Airport

 8.4 MI
Holland Tunnel

 8.7 MI
Goethals Bridge

 10.9 MI
Lincoln Tunnel

For additional property information or to arrange an inspection, please contact the exclusive brokers:

Jason M. Crimmins, CCIM, SIOR
Chief Executive Officer
973.379.6644 x 122
jmcrimmins@blauberg.com

Alessandro (Alex) Conte, CCIM, SIOR
President
973.379.6644 x 131
aconte@blauberg.com

Peter J. Murano, Jr., SIOR
Managing Executive Director
973.379.6644 x 114
pjmurano@blauberg.com

The information contained herein has been obtained from sources considered to be reliable, but no guarantee of its accuracy is made by this company. In addition, no representation is made respecting zoning, condition of title, dimensions, or any matters of a legal or environmental nature. Such matters should be referred to legal counsel for determination. Terms and conditions are subject to change without prior notice. Subject to errors and omissions.