



THE REDSTONE

2940 16TH STREET,
SAN FRANCISCO

**220 - 2,498 SF
AVAILABLE**

A REMARKABLE
THREE-STORY,
LOW-RISE MIXED
USE SPACE



*Photo has been physically
changed/enhanced for marketing purposes.

James Kilpatrick
President
james@nainorcal.com
510.290.9647
CalDRE #01277022

Seth Hubbert
Investment Advisor
shubbert@nainorcal.com
510.757.9929
CalDRE #02158135

Damon Gerstein
Investment Advisor
dgerstein@nainorcal.com
415.465.4907
CalDRE #02268840

Tim Marshall
Investment Advisor
tmarshall@nainorcal.com
408.502.5363
CalDRE #02325164



THE BUILDING

The Redstone Building at 2924-2948 16th Street is a remarkable three-story, low-rise mixed-use space with steel-framed architecture, captivating brick masonry, and concrete facades. Boasting 55,560 SF of space on a prime parcel, it offers visibility along 16th Street and Capp Street. Home to a diverse community of tenants, from small offices to theaters, this historic gem promises a vibrant, modern workspace with limitless potential.

HIGHLIGHTS

- Public Transit: A 1-minute walk to BART enhances accessibility for employees and clients.
- ADA Accessibility: The majority of units are ADA accessible, ensuring inclusivity and convenience.
- Renovated Spaces
- Responsive Onsite Property Management
- Technology-enhanced entry system and suite locks provide a safe environment for business operations
- Building wide WiFi



THE REDSTONE

2940 16TH STREET

Retailer Map

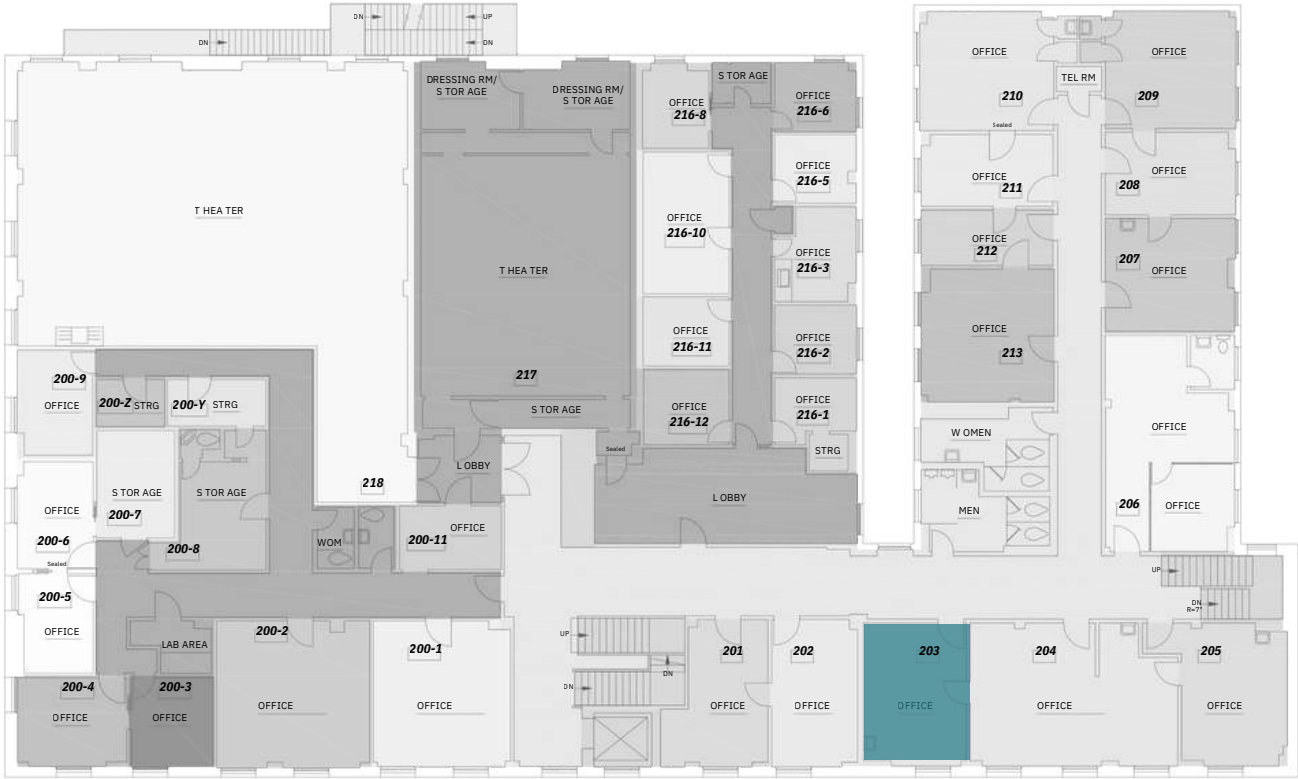




THE REDSTONE

2ND FLOOR

2940 16TH STREET



AVAILABLE
UNITS

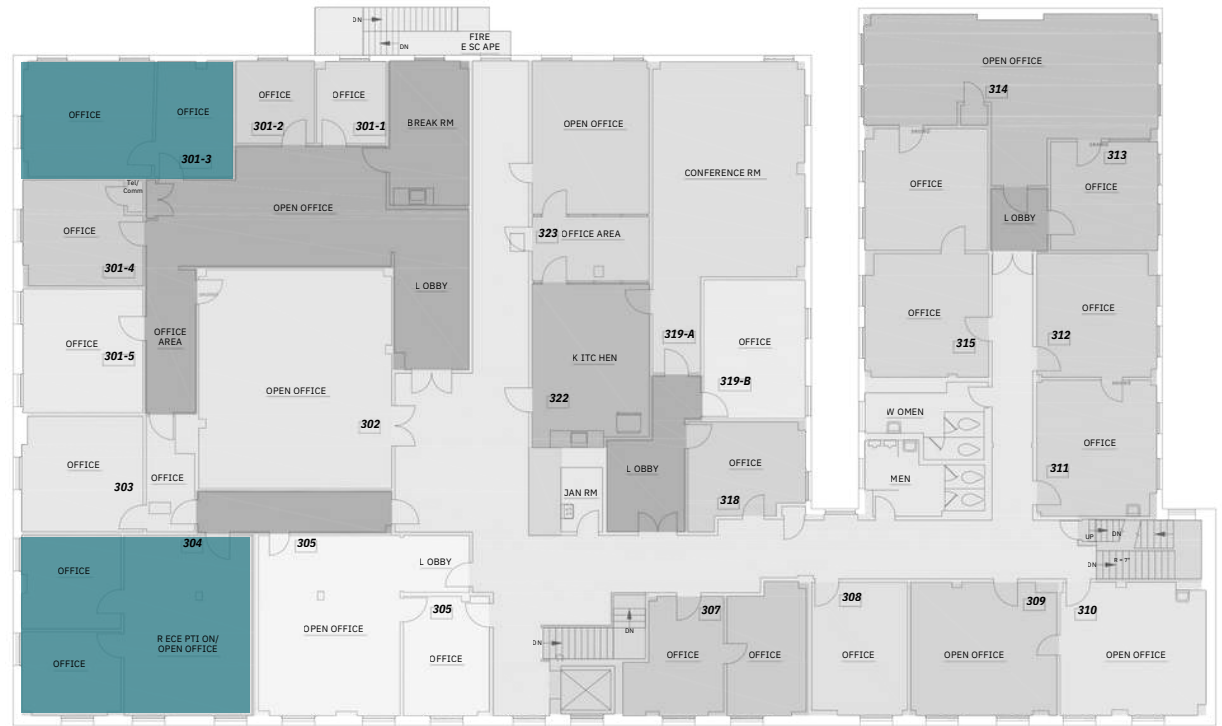
SUITE	RENTABLE SF	RENT (SF/MO)
203	280	\$1.34 MG
2nd Floor Total	+/- 280	



THE REDSTONE

2940 16TH STREET

3RD FLOOR



 AVAILABLE
UNITS

SUITE	RENTABLE SF	RENT (SF/MO)
301-3	510	\$1.34 MG
304	1,015	\$1.44 MG
3rd Floor Total		+/- 1,525

AVAILABILITY TERMS & CONDITIONS

THE REDSTONE

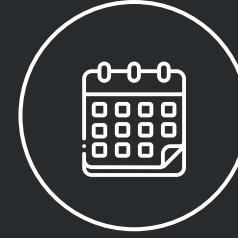
2940 16TH STREET



**RENT: \$1.45-\$2.50/SF/MO
FLEXIBLE TERMS**



**SHORT & LONG TERM
LEASE AVAILABLE**



**AVAILABLE
IMMEDIATELY**





THE REDSTONE

2940 16TH STREET

FOR LEASING INFORMATION



James Kilpatrick

james@nainorcal.com
510.290.9647
LIC# 01277022



Seth Hubbert

shubbert@nainorcal.com
510.757.9929
CalDRE #02158135



Damon Gerstein

dgerstein@nainorcal.com
415.465.4907
CalDRE #02268840



Tim Marshall

tmarshall@nainorcal.com
408.502.5363
CalDRE #02325164