

SHARED MEDICAL SPACE FOR SUBLEASE

IN THE BEVERLY HILLS GOLDEN TRIANGLE

421 N. BEVERLY DRIVE, BEVERLY HILLS, CA 90210

Jeffrey E. Resnick
Senior Managing Director
P 310.922.1717
jresnick@cagre.com
Lic. 00405333

Adam Funk
Managing Director
P 310.666.0124
afunk@cagre.com
Lic. 02129715



COMMERCIAL
ASSET GROUP

SPACE INFORMATION

- Shared reception, waiting area, kitchen. hallways, one office, 2-3 exam rooms, every room is already fully equipped and furnished
- Ideal tenants would be OB-GYN, ENT facial plastic surgery, primary care practice, psychology

These materials are based on information and content provided by others, which we believe are accurate. No guarantee, warranty or representation is made by Commercial Asset Group, Inc. or its personnel. All interested parties must independently verify accuracy and completeness. As well, any projections, assumptions, opinion, or estimates are used for example only and do not represent the current or future performance of the identified property. Your tax, financial, legal and toxic substance advisors should conduct a careful investigation of the property and its suitability for your needs, including land use limitations. The property is subject to prior lease, sale, change in price, or withdrawal from the market without notice.

SPACE SIZE

SUITE 260:
±1,000 - 1,600 SF

RENTAL RATE

\$5.50 PSF, FSG SUBLEASE

TERM

NEGOTIABLE

AVAILABILITY

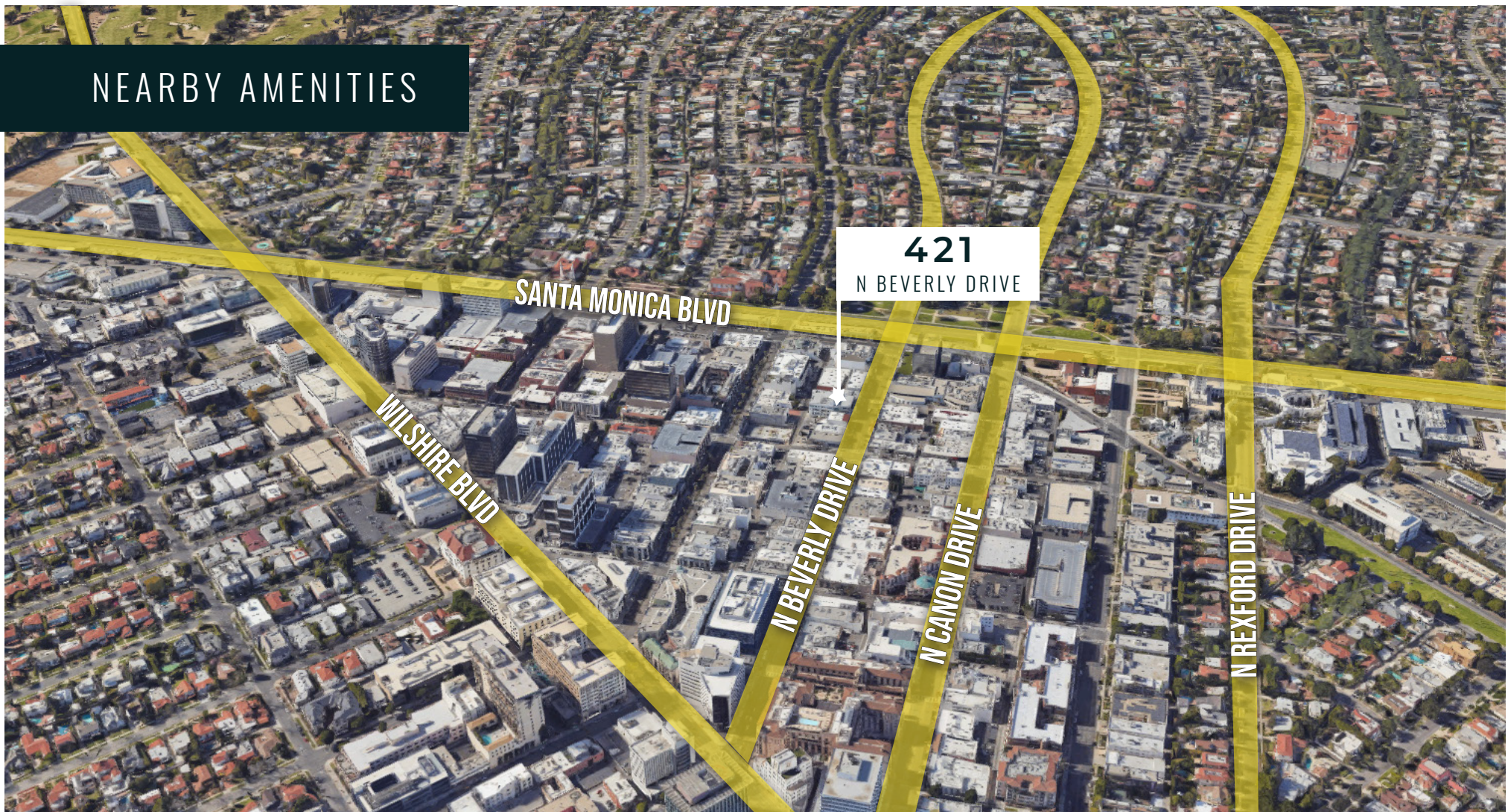
IMMEDIATELY

PARKING

\$175 UNRESERVED

421 N BEVERLY DRIVE, BEVERLY HILLS, CA 90210

NEARBY AMENITIES



CRUSTACEAN



Neiman Marcus

THE PENINSULA
BEVERLY HILLS

Saks Fifth Avenue

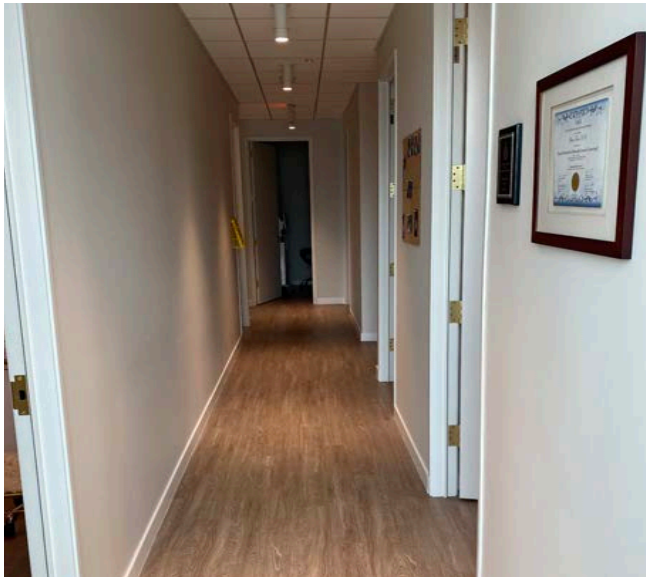
Spago
Beverly Hills

Beverly Hills
teuscher
Chocolates of Switzerland

W
WALDORF ASTORIA
BEVERLY HILLS

421 N BEVERLY DRIVE, BEVERLY HILLS, CA 9020

INTERIOR PHOTOS



421 N BEVERLY DRIVE, BEVERLY HILLS, CA 90210

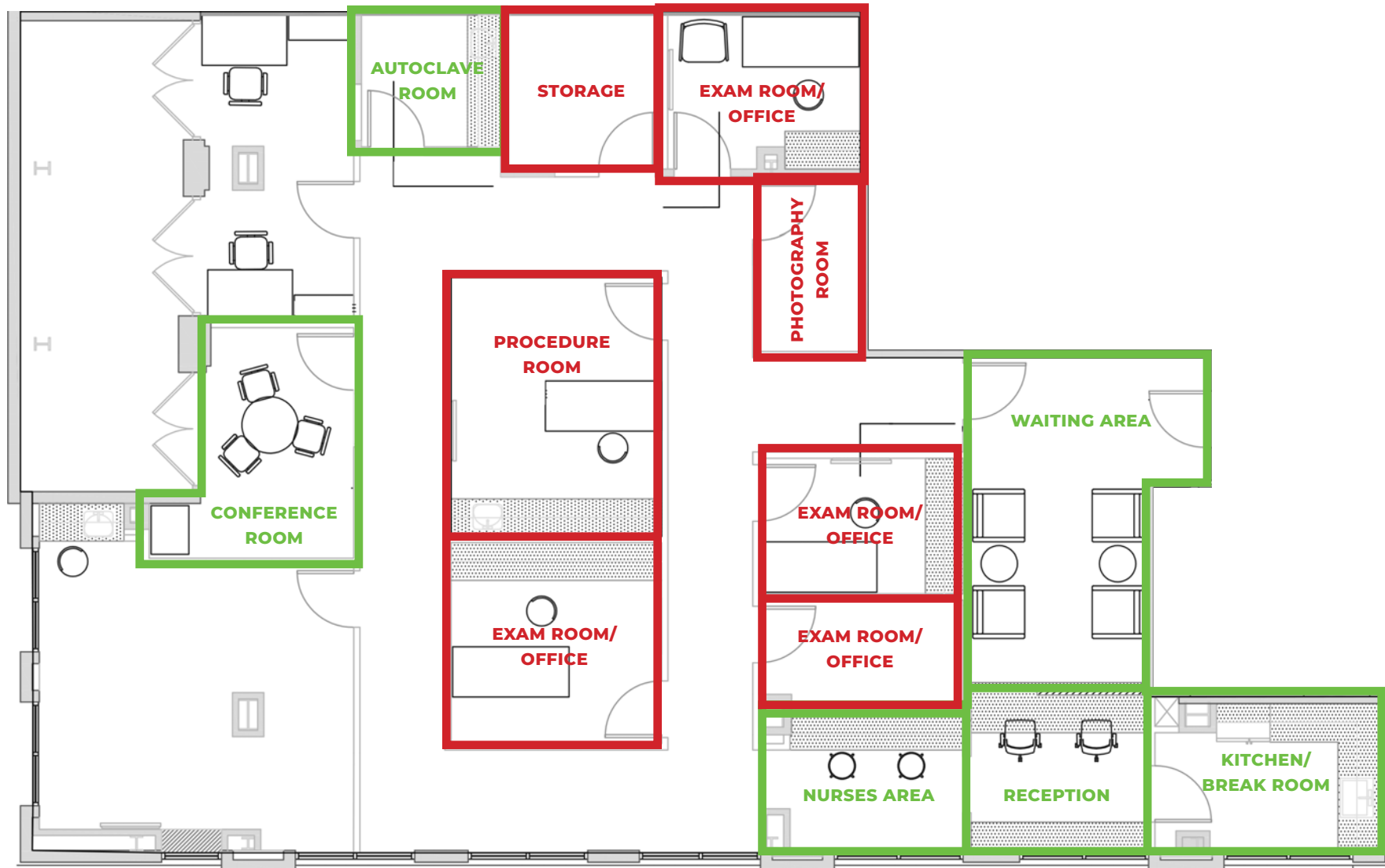
FLOOR PLAN

MONDAY - ACCESS TO ENTIRE OFFICE

WEDNESDAY - ACCESS TO ENTIRE OFFICE MOST OF THE DAY

RED: DEDICATED SPACE

GREEN: SHARED SPACE





**COMMERCIAL
ASSET GROUP**

Jeffrey E. Resnick
Senior Managing Director
P 310.922.1717
jresnick@cagre.com
Lic. 00405333

Adam Funk
Managing Director
P 310.666.0124
afunk@cagre.com
Lic. 02129715

Commercial Asset Group
1801 Century Park East, STE 1550
Los Angeles, CA 90067
P 310.275.8222 F 310.275.8223
www.cagre.com Lic. 01876070