



**CENTERPOINT I**

**624 SIX FLAGS DRIVE  
ARLINGTON, TX 76011**



## **BUILDING INFORMATION**

- **Class A lobbies, corridors, and restrooms**
- **Class A amenity center - gym, lounge, and deli**
- **Outdoor jogging trails & basketball courts**
- **Shower facilities & locker rooms**
- **Convenient electric car charging stations**
- **State-of-the-art HVAC & energy management system**
- **Monument signage available**
- **1,000 - 3,000 RSF vacancies available**

**Kolby Dickerson**

**[kdickerson@txreproperties.com](mailto:kdickerson@txreproperties.com)**

**214-534-1599**

**Centerpoint I is located in the dynamic, vibrant, and amenity rich entertainment district of Arlington.**

## **LOCATION**

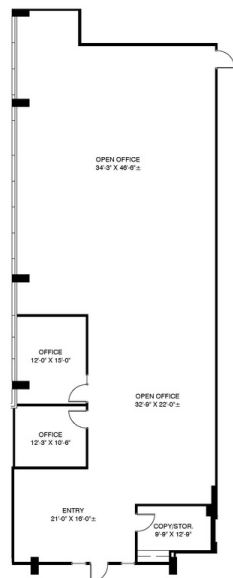
- **Immediate access to I-30 & Highway 360**
- **Close proximity to AT&T Stadium & Globe Life Park**
- **Convention center/hotels/dining close by**
- **World famous Texas Live minutes away**
- **A part of four building campus (CP Campus)**

**Sam Davis**

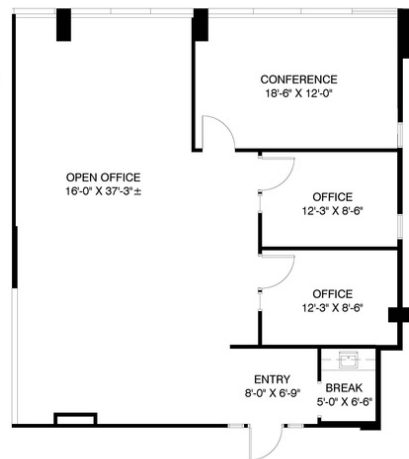
**[sdavis@txreproperties.com](mailto:sdavis@txreproperties.com)**

**214-684-7197**





**Suite 241**  
**3,785 RSF**



**Suite 255**  
**1,589 RSF**

**LEASING INFORMATION**

**Kolby Dickerson**  
kdickerson@txreproperties.com  
214-534-1599

**Sam Davis**  
sdavis@txreproperties.com  
214-684-7197

