

Former Manitowoc Crane Repair Facility

16013 W Sardis Rd
Bauxite, AR 72011

Multiple Industrial Buildings on ±36 Acres



Industrial

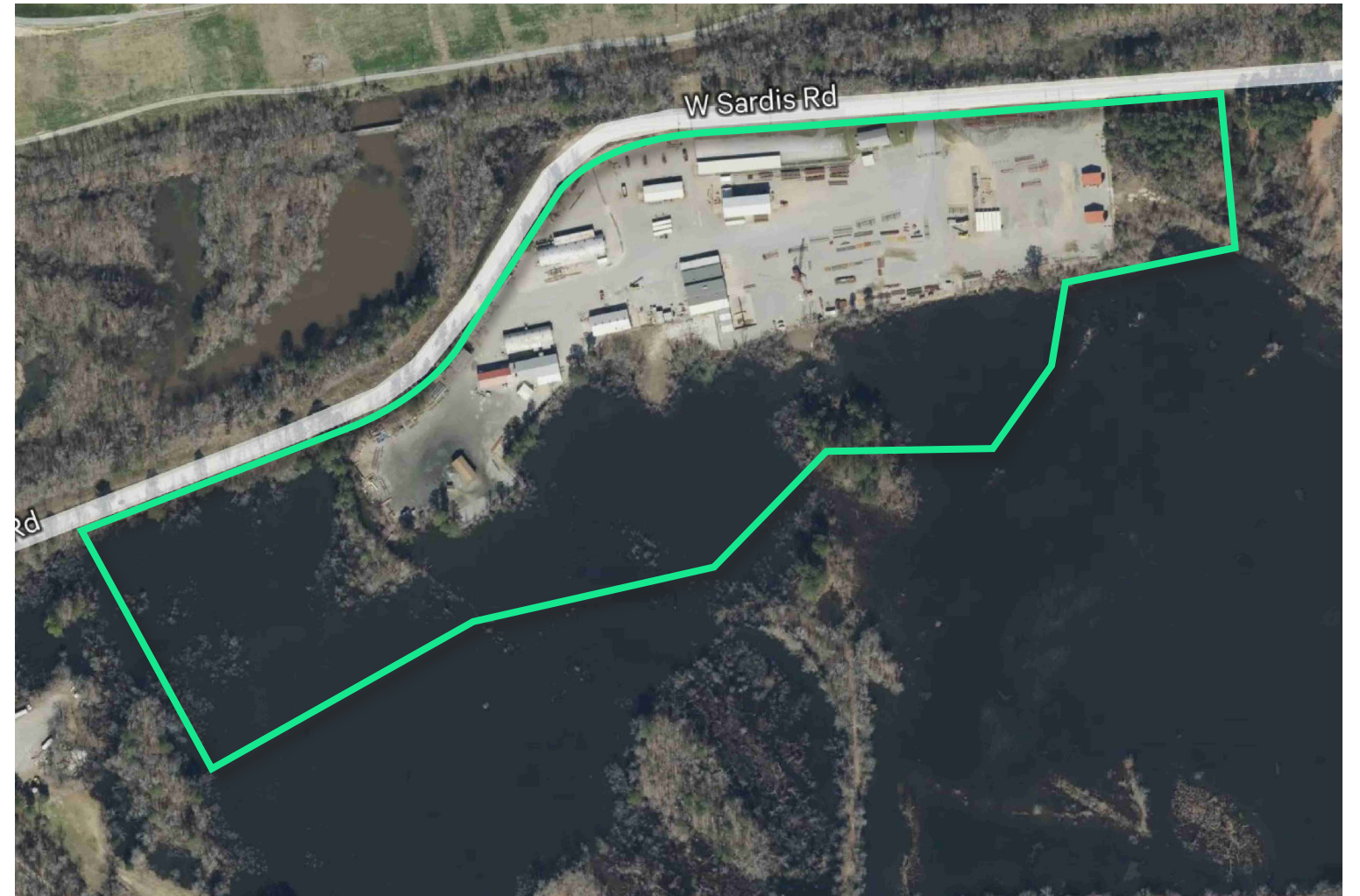
16013 W Sardis Rd | Bauxite, AR 72011

For Sale

36± Acre Site

Former Crane Repair and Fabrication Facility

- Approximately 13 acres of fully fenced, packed gravel yard
- Multiple buildings totaling approximately 38,000 sq. ft. of industrial space
- Heavy power
- New septic system
- Excellent for welding, automotive, fabrication, and other industrial uses
- Price negotiable



Existing Facility Overview

Building Details

- 1. Main Office – 1,926 sq. ft.**
 - 4 offices, conference room, break room
 - Carport
- 2. Boom Weld – 4,139 sq. ft.**
 - 2-ton overhead crane in place
- 3. Main Shop – 10,512 sq. ft.**
 - 2 offices, small break room
 - 6 cranes in place:
 - 1-ton, 3-ton, 3-ton, 3-ton, 5-ton, and 10-ton
- 4. Small Weld Shop – 2,160 sq. ft.**
 - Two 1-ton overhead cranes
- 5. Warehouse – 6,962 sq. ft.**
 - Racking in place
 - Small parts storage use
- 6. Lacing/Cutting – 3,900 sq. ft.**
 - 2-ton overhead crane
- 7. Paint Booth – 4,800 sq. ft.**
 - 48' long × 16' wide
 - Newer build
- 8. Blast Building – 2,147 sq. ft.**
 - Outside blast area
- 9. Storage – 3,293 sq. ft.**



Industrial

16013 W Sardis Rd | Bauxite, AR 72011

For Sale



Contact Us

Alex Rodgers

+1 501 920 2405

alex.rodgers@cbre.com

William Callahan, SIOR

+1 214 577 0711

william.callahan@cbre.com

Zachary Binswanger

+1 215 919 0724

zbinswanger@binswanger.com

© 2026 CBRE, Inc. All rights reserved. This information has been obtained from sources believed reliable, but has not been verified for accuracy or completeness. You should conduct a careful, independent investigation of the property and verify all information. Any reliance on this information is solely at your own risk. CBRE and the CBRE logo are service marks of CBRE, Inc. All other marks displayed on this document are the property of their respective owners, and the use of such logos does not imply any affiliation with or endorsement of CBRE. Photos herein are the property of their respective owners. Use of these images without the express written consent of the owner is prohibited.

www.cbre.com/littlerock

The CBRE logo, consisting of the letters "CBRE" in a bold, green, sans-serif font.