

CASADY SQUARE SHOPPING CENTER

FOR LEASE



9201 N. Pennsylvania Ave., Oklahoma City, Oklahoma 73120



7501 Broadway Extension
Oklahoma City, OK 73116

Presented By:

George W. Huffman

CEO | Managing Broker

M: 405.409.4400

O: 405.752.2525

george@iwpok.com



PROPERTY OVERVIEW

Casady Square is a premier retail destination known for its longevity, visibility, and strong tenant performance. For over 70 years, it has remained a go-to shopping hub—continually evolving while maintaining its reputation for quality and consistency.

This highly desirable center offers flexible suite options suited for a wide range of tenants, including retail, restaurant, service, and wellness concepts. Recent additions such as Stretch Lab, Mattie’s Coffee Company, Smooth Wax Bar, and L’Arc Patisserie highlight the center’s dynamic and growing tenant mix.

Strategically located near Nichols Hills, Casady Square benefits from consistent traffic generated by an affluent and engaged customer base. The combination of location, visibility, and accessibility makes this an exceptional opportunity for businesses looking to position themselves in a thriving retail environment.

Vacancies are limited, and demand remains strong making this an ideal time to establish your presence in one of the area’s most sought-after retail corridors, so give us a call today for a showing! Don’t miss out on this great opportunity.

Call: George Huffman @ 405-409-4400 | george@iwpok.com

OFFERING SUMMARY

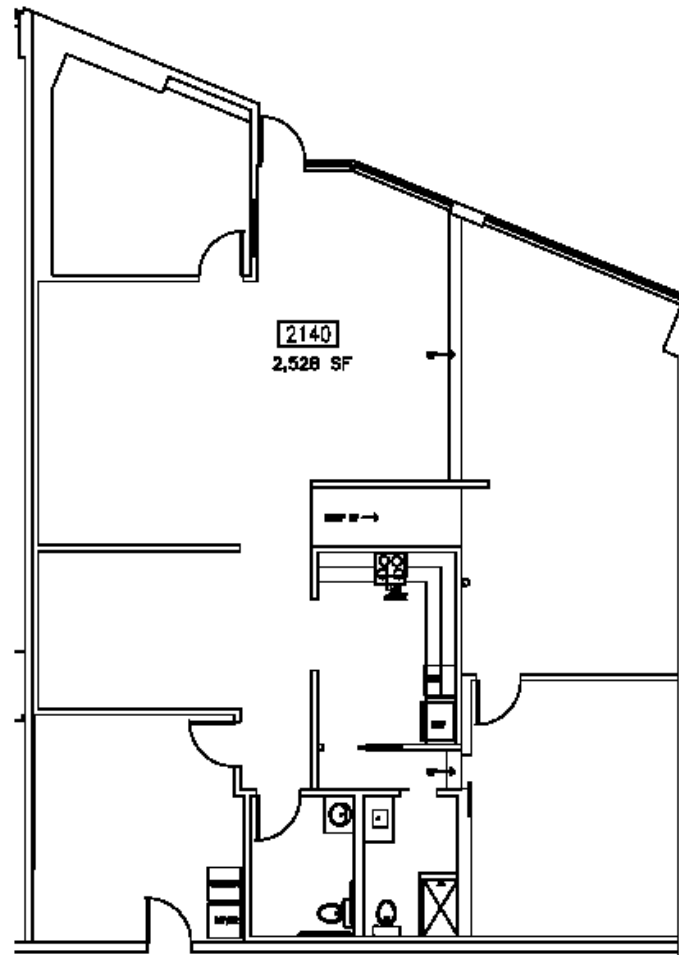
\$18.00 SF / YEAR

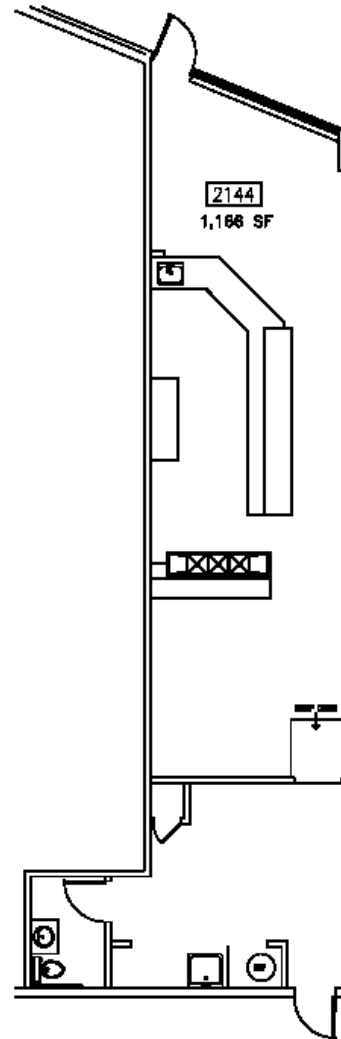
BUILDING SF	87,767
AVAILABLE SF	15,216
OPEX RATE	\$4.25
LEASE TYPE	NNN
TYPICAL TERM	3-5 Years
CO-BROKERAGE	3% Primary Term

FOR LEASE

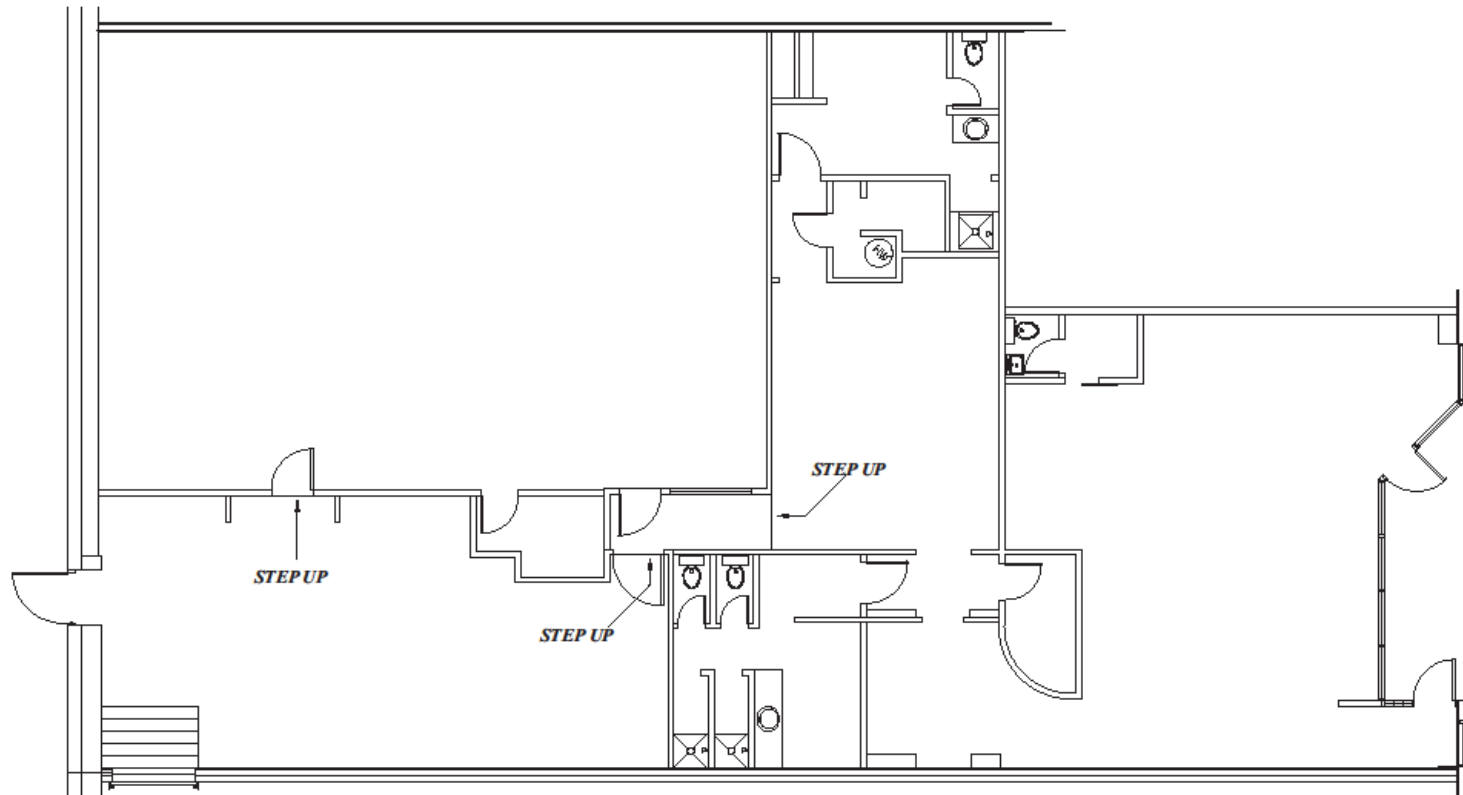



SPACES	LEASE RATE	SPACE SIZE
Suite 2132	\$18.00 SF/yr (NNN)	1,984 SF
Suite 2140	\$18.00 SF/yr (NNN)	2,528 SF
Suite 2144	\$18.00 SF/yr (NNN)	1,166 SF
Suite 9223	\$18.00 SF/yr (NNN)	4,770 SF
Suite 9323	\$18.00 SF/yr (NNN)	2,978 SF
Suite 9325	\$18.00 SF/yr (NNN)	1,790 SF



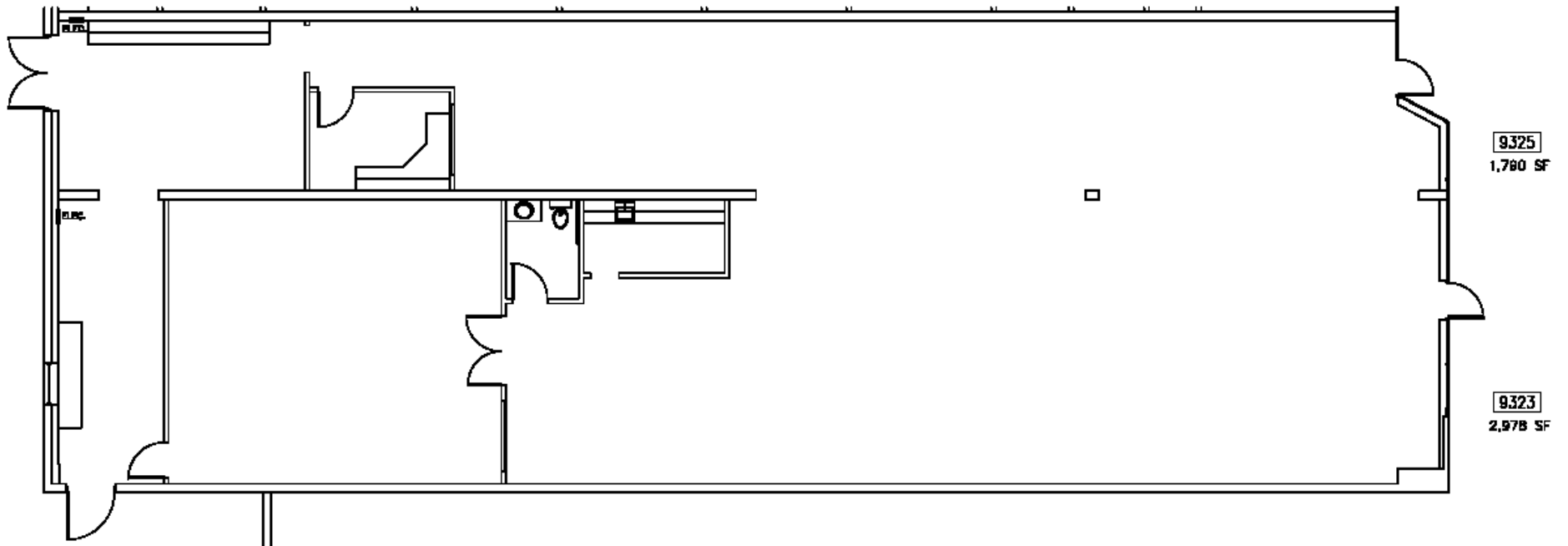


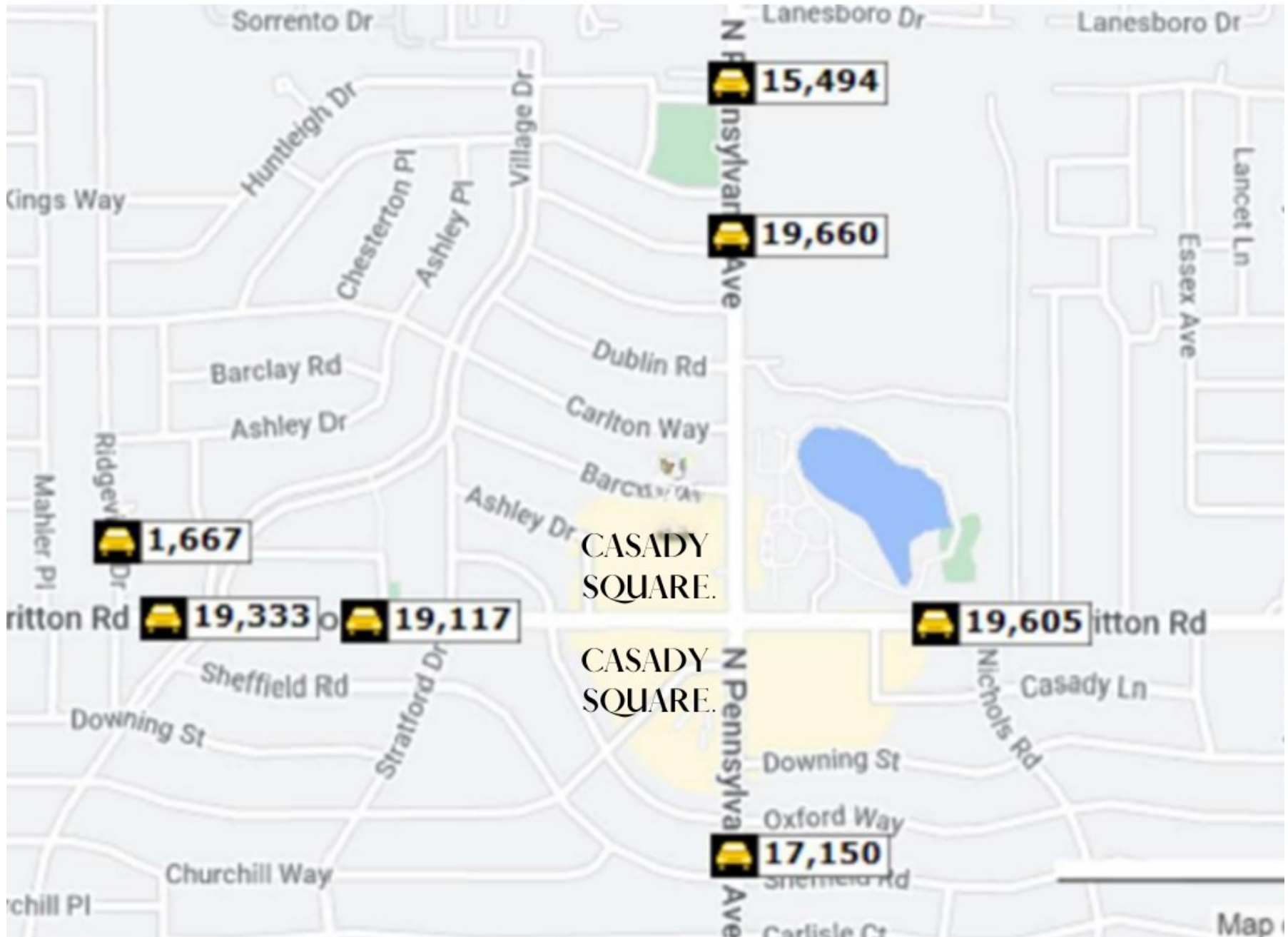
CASADYSQUARE
9223 N. PENNSYLVANIA
OKLAHOMA CITY, OKLAHOMA
4,770 sf



 Scale: 1/8"=1'-0"

FOR LEASE





INTERWEST REALTY

FOR LEASE

Highlights:

- Great Location Near Nichols Hills
- Wide Variety of Tenants
- High Traffic Counts
- Merchant Association

Call: George Huffman @ 405-409-4400 | george@iwpok.com



9201 N. Pennsylvania Ave., Oklahoma City, Oklahoma 73120



7501 Broadway Extension
Oklahoma City, OK 73116

Presented By:

George W. Huffman
CEO | Managing Broker
M: 405.409.4400
O: 405.752.2525
george@iwpok.com