

# 6213 E HWY 332 FOR SALE

F R E E P O R T , T X

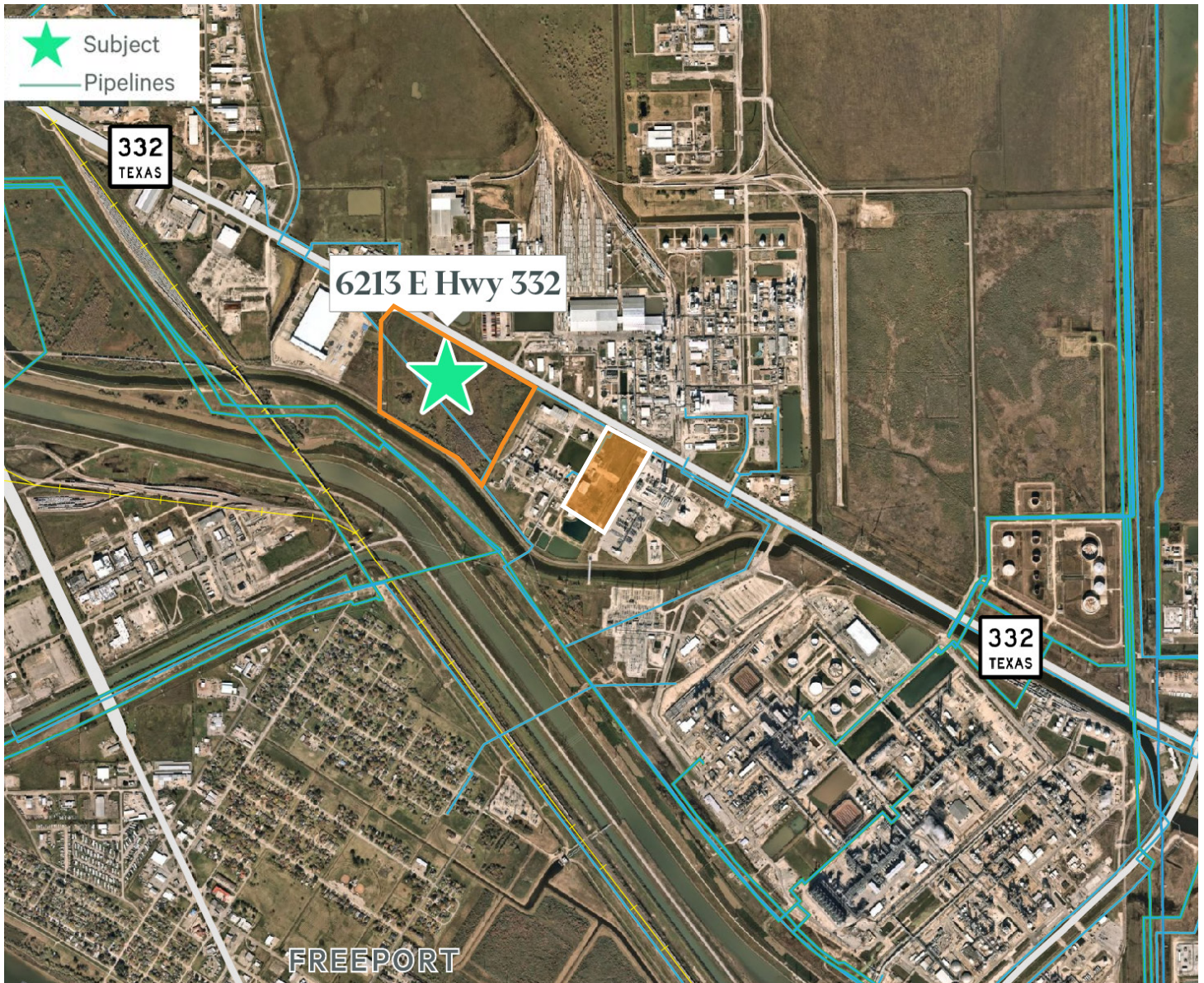


±30.66 & ±14.00 ACRES FOR SALE

- Multiple Product Lines in Immediate Proximity
- Heavy Industrial Area
- Robust Industrial Utilities
  - Centerpoint (138 kva & 345 kva)
  - Private Industrial Utilities
- Union Pacific adjacent (southern border)
- Excellent Access to Hwy. 288
- Highway 332 Frontage  
~ 1500 ft. of frontage
- Out of the 500-year floodplain
- 6 Miles from Port Freeport
- Asking Price: \$14,558,000 or \$7.48/SF



# PIPELINE MAP

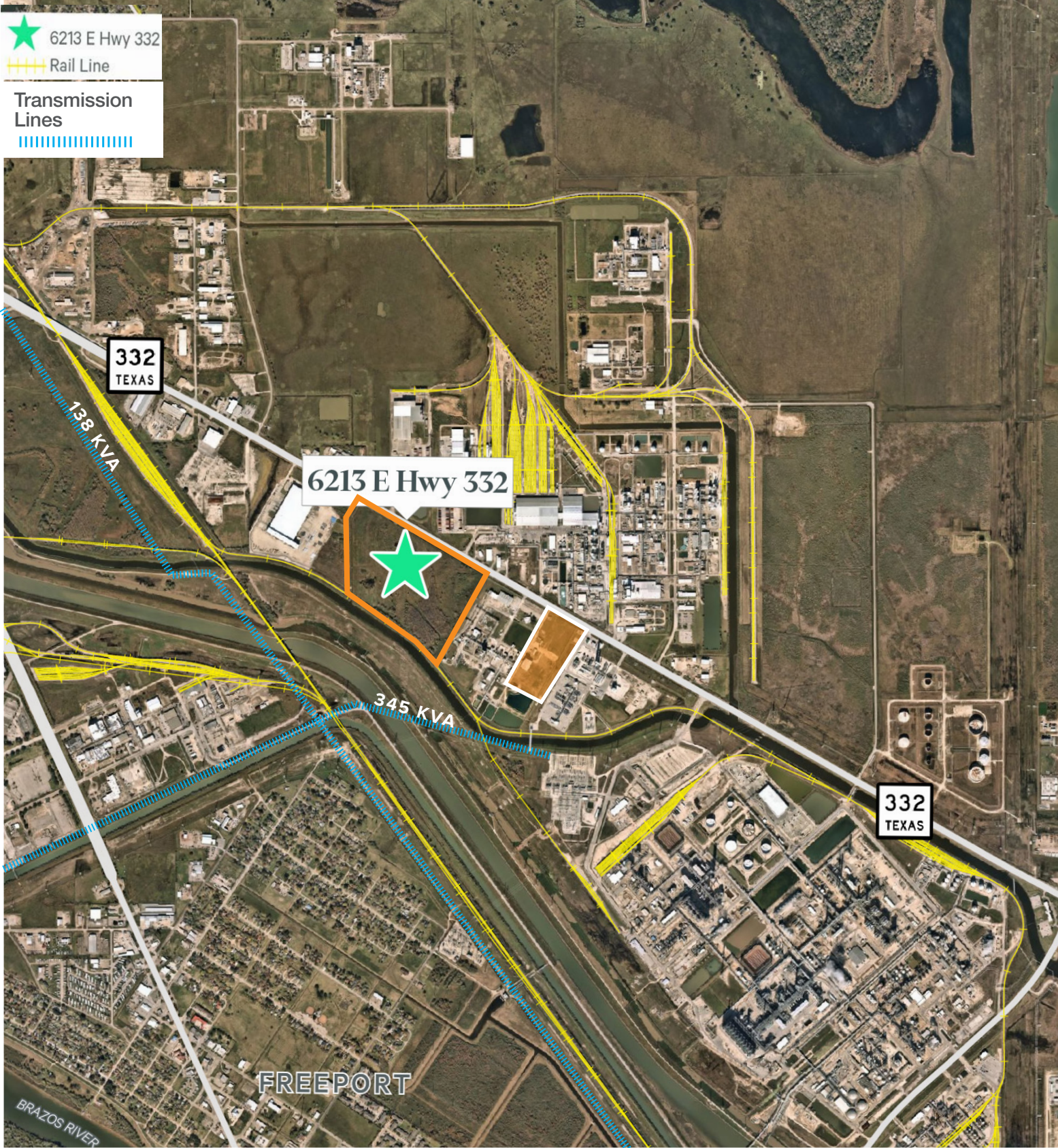


## AREA PIPELINES

Cyclohexane	Octene
Propylene	Hydrogen
Methane	Natural Gas
Ethylbenzene	AHCL
Ethane	



# RAIL / ELECTRICAL MAP





Gulf of Mexico



HUNTSMAN



SI Group



±14.00 ACRES



HWY 332





Intracoastal Waterway

FREEPORT  
LNG

PORT FREEPORT

BASF

CHAMPIONX

PHILLIPS  
66

Braskem

DOW

Dow Barge Canal

±30.66 ACRES

DOW

6213  
HWY 332



# 6213 HWY 332

F R E E P O R T , T X

FOR ADDITIONAL INFORMATION  
PLEASE CONTACT:

## ANDREW JEWETT SR.

Senior Vice President

713.577.1735

[andrew.jewett@cbre.com](mailto:andrew.jewett@cbre.com)

## KAYLA RIPPLE

Transaction Manger

713.577.1731

[kayla.ripple@cbre.com](mailto:kayla.ripple@cbre.com)

**±30.66 & ±14.00 ACRES FOR SALE**

© 2024 CBRE, Inc. All rights reserved. This information has been obtained from sources believed reliable, but has not been verified for accuracy or completeness. You should conduct a careful, independent investigation of the property and verify all information. Any reliance on this information is solely at your own risk.

CBRE and the CBRE logo are service marks of CBRE, Inc. All other marks displayed on this document are the property of their respective owners. Photos herein are the property of their respective owners. Use of these images without the express written consent of the owner is prohibited.

**CBRE**