

# 1450

10th Street  
Santa Monica, CA 90401

## MEDICAL OFFICE SPACE AVAILABLE FOR LEASE

SUITE	SIZE	RATE	AVAILABILITY
300	2,075 RSF	Negotiable	IMMEDIATE
402	1,431 RSF	Negotiable	IMMEDIATE



### FOUR STORY

commercial building consisting of approximately 30,000 RSF of medical office space



### BLOCKS AWAY

from St. John's Hospital and close proximity to Ronald Reagan UCLA Medical Center



### EASILY ACCESSIBLE

from the major arteries of Santa Monica Boulevard, Olympic Boulevard, and Pico Boulevard



### NEWLY RENOVATED

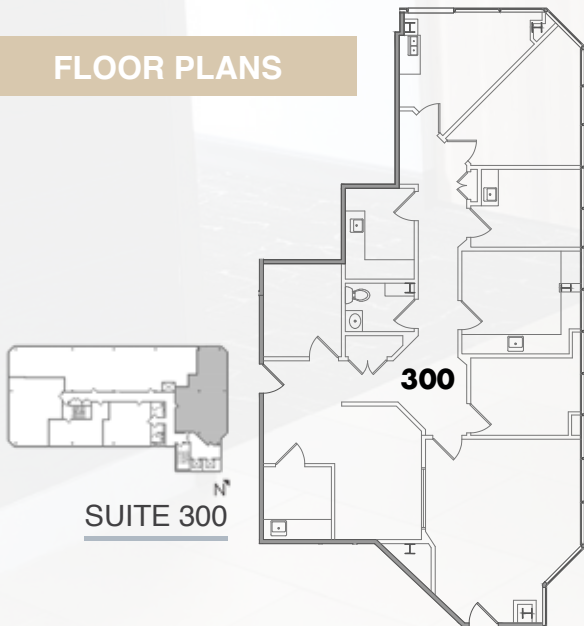
corridors, common areas, and restrooms. Lobby renovation in process

[VIEW PHOTOS](#)

# MEDICAL OFFICE SPACE AVAILABLE FOR LEASE



## FLOOR PLANS



## CONTACT

### ANGIE WEBER

Lic. 01015031

+1 (818) 502-6700

Angie.Weber@cbre.com

### DANA NIALIS

Lic. 01947265

+1 818 502 6774

Dana.Nialis@cbre.com

# CBRE