

**9153**  
**STELLAR CT.**

**±38,816 SF ON 1.86 ACRES**  
**TWO BUILDING CAMPUS**

26,500 SF Main Building, 12,316 SF Fabrication Building



9153 STELLAR COURT | CORONA CA 92883



**Brett Lockwood** | LIC # 01495872  
+1 949 930 2481 | [brett.lockwood@cushwake.com](mailto:brett.lockwood@cushwake.com)



# PROPERTY OVERVIEW

**9153**  
STELLAR CT.

## PROPERTY FEATURES

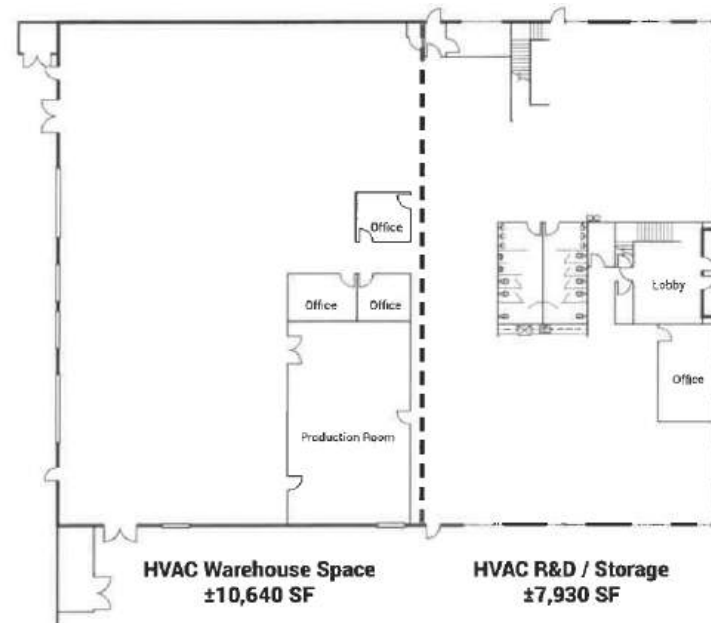
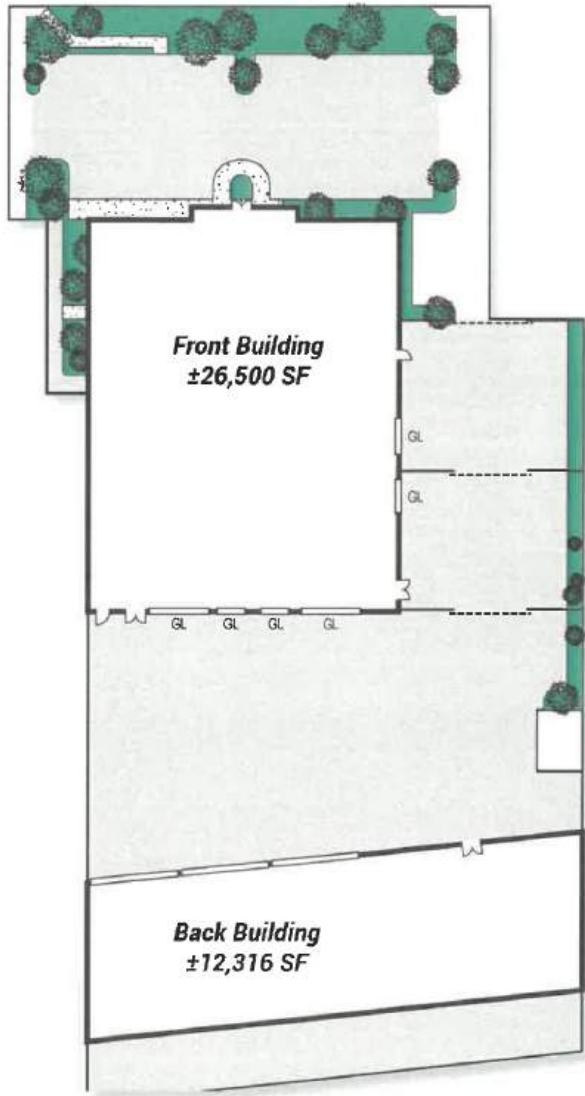
- ±38,816 Total Square Feet
- ±15,860 SF of Office/R&D Space
- 24' Warehouse Clearance
- 5 GL Loading Doors with Knockout Panels for Additional Doors
- 1200 Amps at 277/480 Volt (verify)
- Existing Crane Systems in Place
- Fully Fenced Secured Concrete Yard
- Sprinklers



9153 STELLAR COURT | CORONA CA 92883

# SITE PLAN / OFFICE PLAN (±18,570 First Floor)

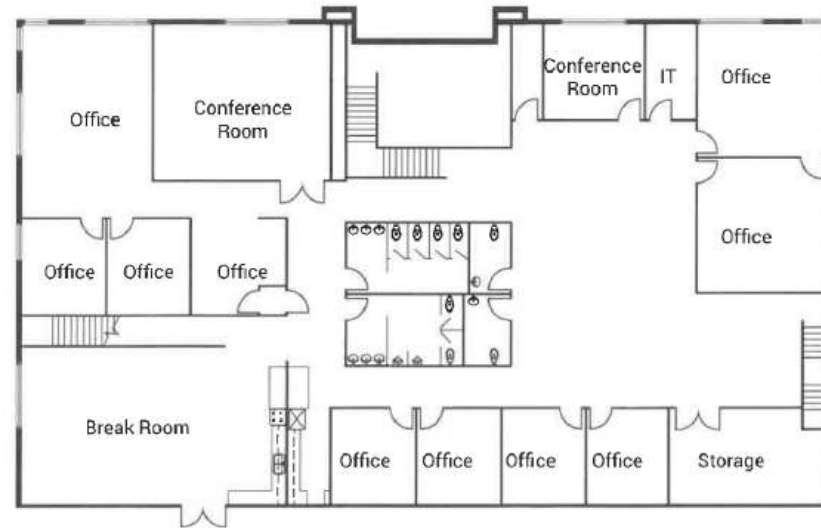
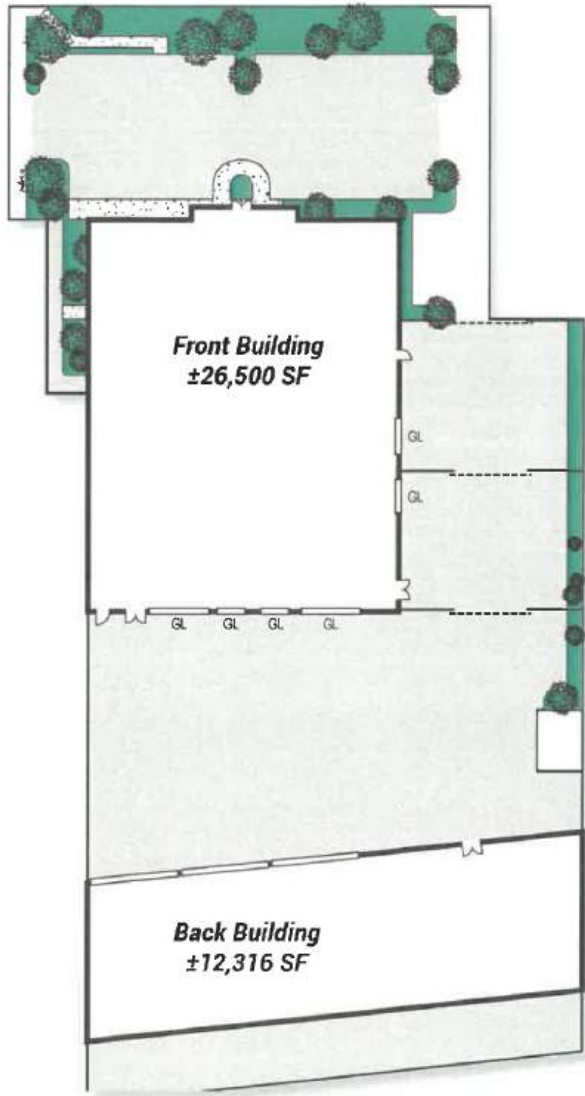
**9153**  
STELLAR CT.



9153 STELLAR COURT | CORONA CA 92883

# SITE PLAN / OFFICE PLAN (±7,930 Second Floor)

**9153**  
STELLAR CT.

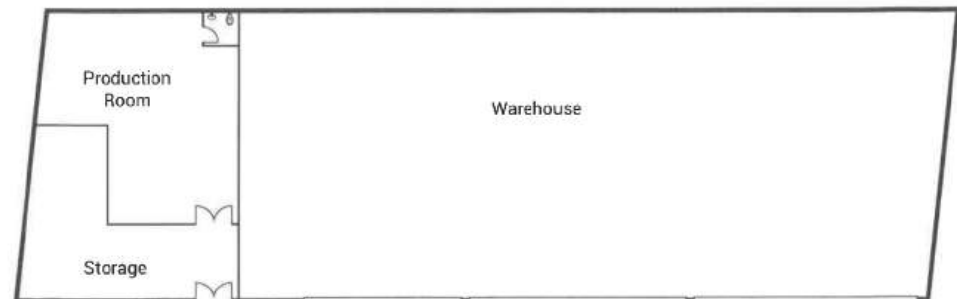
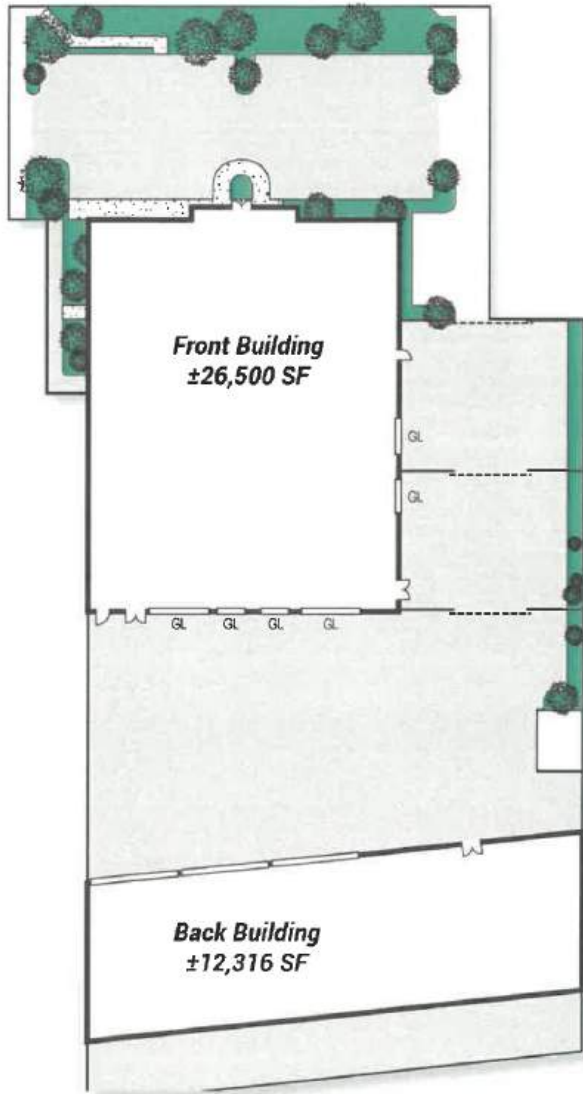


9153 STELLAR COURT | CORONA CA 92883



# SITE PLAN / OFFICE PLAN ( $\pm 12,316$ Back Building)

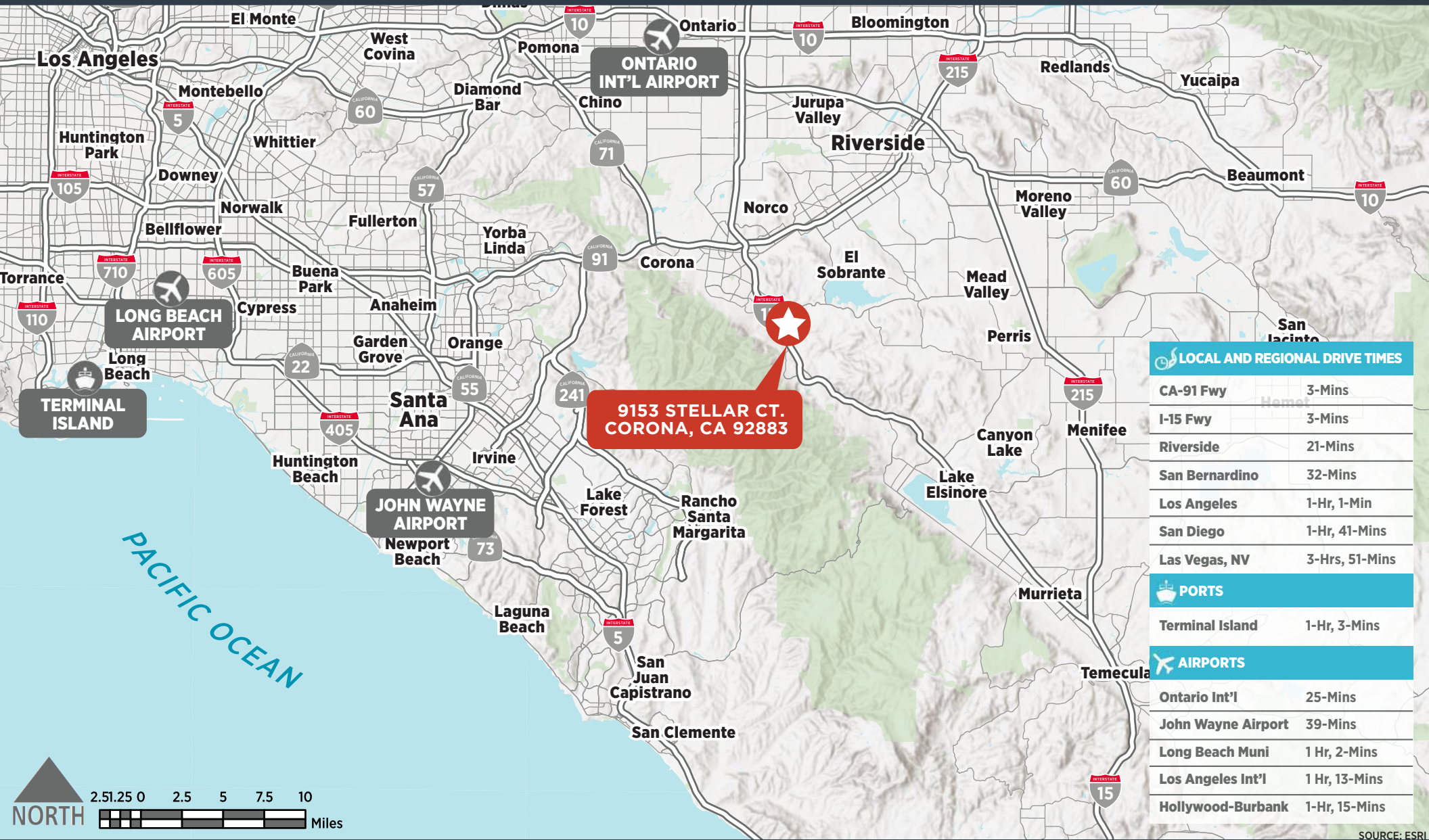
**9153**  
STELLAR CT.



9153 STELLAR COURT | CORONA CA 92883

# LOCATION

**9153**  
STELLAR CT.



SOURCE: ESRI

9153 STELLAR COURT | CORONA CA 92883



**Brett Lockwood** | LIC # 01495872  
+1 949 930 2481 | [brett.lockwood@cushwake.com](mailto:brett.lockwood@cushwake.com)



# 9153

## STELLAR CT.

9153 STELLAR CT., CORONA CA 92883



CUSHMAN &  
WAKEFIELD

**Brett Lockwood** | LIC # 01495872  
+1 949 930 2481 | [brett.lockwood@cushwake.com](mailto:brett.lockwood@cushwake.com)