



FOR LEASE

Office Suite 180

4710 Village Plaza Lp
Eugene OR 97401

DETAILS

- 940 rentable square feet
- Three private offices
- Large meeting area
- Ground floor
- On-site parking
- \$1,880 per month, fully serviced (excluding janitorial)

**Evans
Elder
Brown &
Seubert**

COMMERCIAL REAL ESTATE

Jeff Elder
jeff@eebcre.com

541.345.4860

Licensed in the State of Oregon.

Office Suite 180

4710 Village Plaza Loop
Eugene, Oregon 97401

Evans
Elder
Brown &
Seubert

COMMERCIAL REAL ESTATE

CONTACT

Jeff
Elder

jeff@eebcre.com

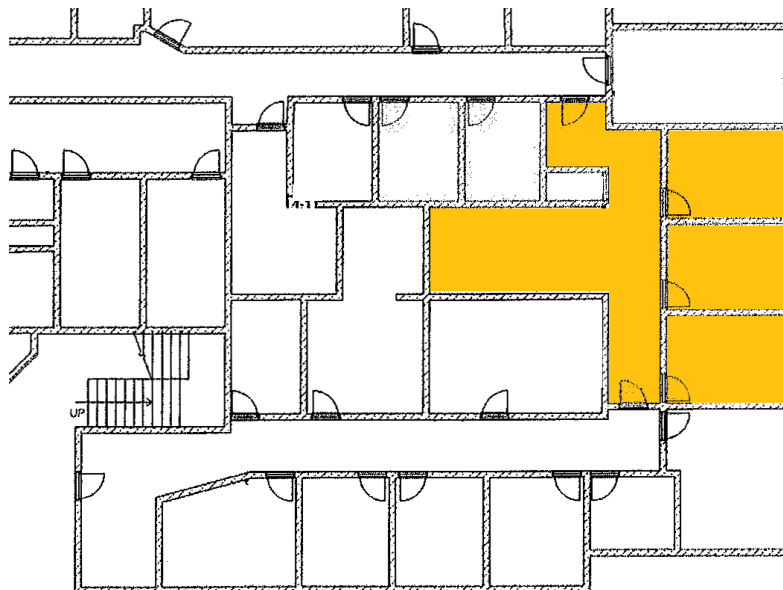
541.345.4860

101 East Broadway
Suite #101
Eugene, OR 97401

Licensed in the
State of Oregon.



SUITE 180 | 940 RSF



The information in this package was gathered from sources deemed reliable, however Evans Elder Brown & Seubert makes no representation or warranty of the accuracy of the information. Any buyer or tenant considering a purchase or lease of this property should confirm any and all information relied upon in making the decision to purchase or lease prior to finalizing the transaction and bears the risk of all inaccuracies.