



---

**367 EAST 62ND STREET**

BETWEEN 1ST AVENUE AND 2ND AVENUE  
LENOX HILL

---



# 367 EAST 62ND STREET

BETWEEN 1ST AVENUE AND 2ND AVENUE



## SIZE

GROUND FLOOR | 500 SF  
BASEMENT | 300 SF

## POSSESSION

Immediate

## COMMENTS

- Office Use Only
- Prime UES btwn 1st & 2nd Avenue
- Turn Key Ready

## ASKING RENT

Available Upon Request

## TERM

1-10 Years

## TRANSPORTATION



JOHN BRIAN

(212) 256-1443

[JBrian@REALNewYork.com](mailto:JBrian@REALNewYork.com)

CHRISTOPHER

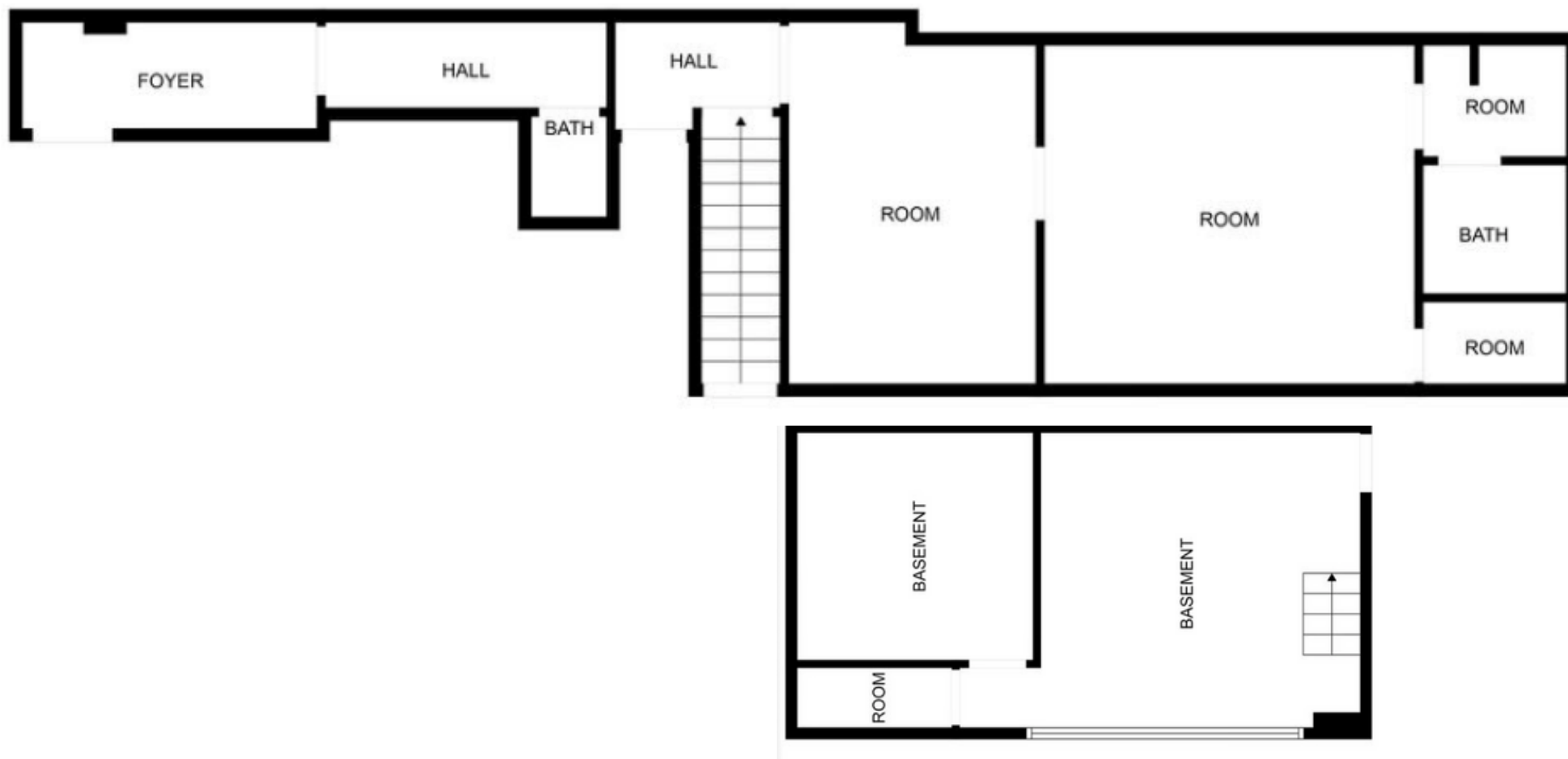
(516) 318 - 2359

[CHRISR@REALNewYork.com](mailto:CHRISR@REALNewYork.com)

**REALNY** | COMMERCIAL

# 367 EAST 62ND STREET

BETWEEN 1ST AVENUE AND 2ND AVENUE



JOHN BRIAN

(212) 256-1443

[JBrian@REALNewYork.com](mailto:JBrian@REALNewYork.com)

CHRISTOPHER

(516) 318 - 2359

[CHRISR@REALNewYork.com](mailto:CHRISR@REALNewYork.com)

**REAL<sup>NY</sup>** | COMMERCIAL