

View Virtual  
Walkthrough



View Inside

Colliers

Accelerating success.

For Lease

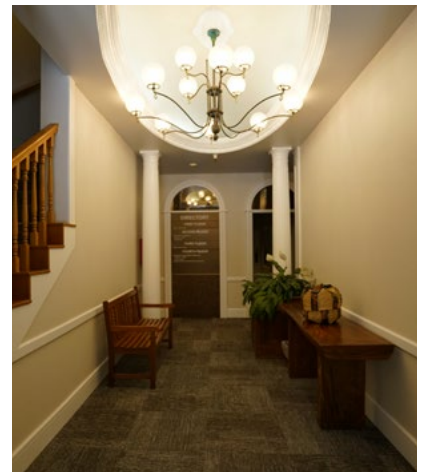
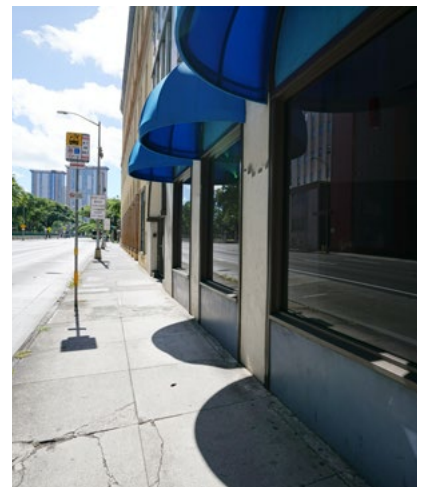
# 223 South King Street Honolulu, HI 96813

## The Austin Building

This unique space is located along South King Street, within the Central Business District of Honolulu. The space is presented well with three decent sized canopied windows and two entrances. The space consists of a large open area along with two offices and a kitchen. This location and space offer a great opportunity for any business to make a presence within the hustle and bustle of Downtown Honolulu.

### Features & Benefits

- Creative office space with high ceilings and large open space
- Ground floor office space with signage potential
- Large windows facing South King Street
- High pedestrian and vehicular visibility
- Historic building



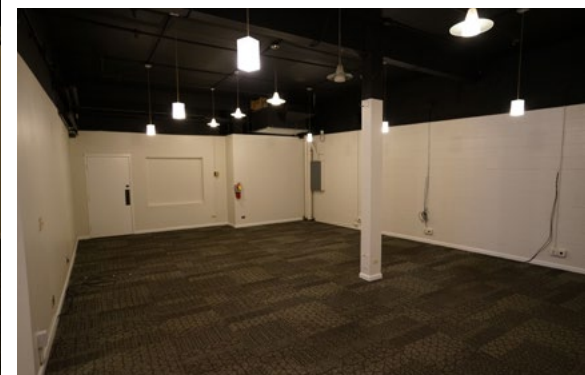
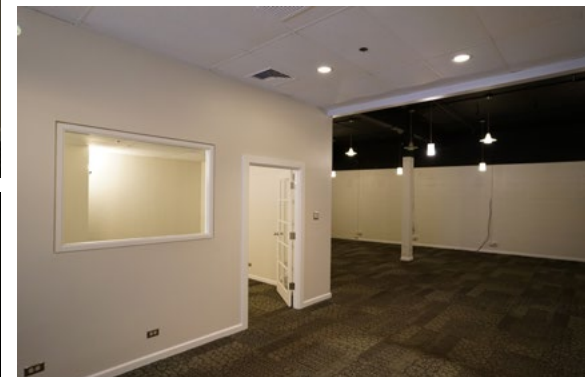
Accelerating success.



# For Lease

## Property Information

Area	Central Business District
TMK Number	(1) 2-1-16-6
Zoning	BMX-4
Space Available	Suite 100 (2,214 SF) - Ground Floor
Gross Rent	\$3.00 PSF/Mo.
Term	3+ Years





# For Lease

## Nearby Parking Garages & Rates Information



	PARKING GARAGES	RATES
1	CENTURY SQUARE	AVAILABLE CASE-BY-CASE
2	THE PANTHEON GARAGE	\$172.77-\$235.60/MONTH
3	MARKS GARAGE	HOURLY AVAILABLE
4	ALII PLACE	HOURLY AVAILABLE
5	HARBOR COURT	HOURLY AVAILABLE
6	HARBOR SQUARE	\$260 UNRESERVED. \$425 RESERVED.
7	KUKUI PLAZA	\$150/MONTH
8	ALAKEA CORPORATE TOWER	\$220/MONTH
9	ST ANDREWS CATHEDRAL	\$270/MONTH
10	TISSUE GENESIS	\$246/MONTH
11	CAPITOL PLACE	\$275/MONTH

### Contact Information:

#### Alexander Peach (S), CCIM, SIOR

Associate Vice President  
Office Services Division  
Lic# RS-76881  
808 349 6538  
alexander.peach@colliers.com

220 S. King Street, Suite 1800  
Honolulu, Hawaii 96813  
808 524 2666  
colliers.com

