

FOR SUBLEASE

1991 Ford Parkway | Saint Paul, MN

5,365 SF



Katie Trevena

Senior Vice President
(952) 525-3332
Katie.Trevena@ForteREP.com
www.ForteREP.com

Ericka Miller, CCIM

Vice President
(952) 854-8309
Ericka.Miller@ForteREP.com
www.ForteREP.com

Jim Jetland, SIOR

Principal
(952) 525-3333
Jim.Jetland@ForteREP.com
www.ForteREP.com



FORTE
REAL ESTATE PARTNERS

SUBLEASE SPACE FEATURES

1991 Ford Parkway | Saint Paul, Minnesota

Building Information

Building Size 10,712 SF

Year Built 1998

Floors 2

Sublease Terms

Rate Negotiable

Space Available 5,365 SF

Lease Available 8/1/2024

Lease Expiration 12/31/2026

Suite 200 (Entire Top Floor)



- Ample surface level parking
- Conveniently located in the Highland Park neighborhood
- On Ford Parkway between Cleveland Ave & Fairview Ave
- Easily accessible to Highway 5 and I-35E
- Space available 08/01/2024
- Lease term through 12/31/2026

Katie Trevena

Vice President
(952) 525-3332
Katie.Trevena@ForteREP.com
www.ForteREP.com

Ericka Miller, CCIM

Vice President
(952) 854-8309
Ericka.Miller@ForteREP.com
www.ForteREP.com

Jim Jetland, SIOR

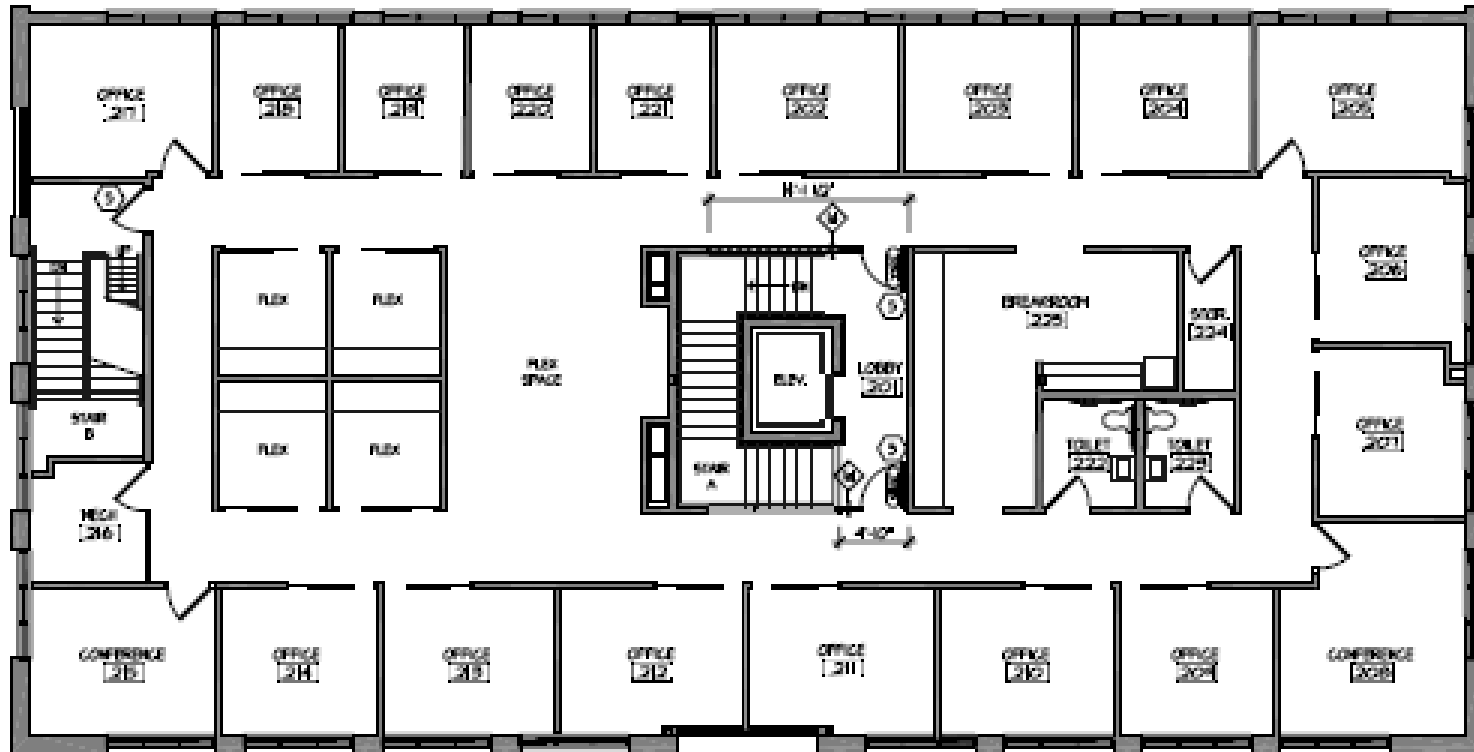
Principal
(952) 525-3333
Jim.Jetland@ForteREP.com
www.ForteREP.com



FORTE
REAL ESTATE PARTNERS

Suite 200 5,365 SF

1991 Ford Parkway | Saint Paul, Minnesota



Plan is not to scale

Katie Trevena

Vice President
(952) 525-3332
Katie.Trevena@ForteREP.com
www.ForteREP.com

Ericka Miller, CCIM

Vice President
(952) 854-8309
Ericka.Miller@ForteREP.com
www.ForteREP.com

Jim Jetland, SIOR

Principal
(952) 525-3333
Jim.Jetland@ForteREP.com
www.ForteREP.com



FORTE
REAL ESTATE PARTNERS

SUBLEASE SPACE PHOTOS

1991 Ford Parkway | Saint Paul, Minnesota



Katie Trevena
Vice President
(952) 525-3332
Katie.Trevena@ForteREP.com
www.ForteREP.com

Ericka Miller, CCIM
Vice President
(952) 854-8309
Ericka.Miller@ForteREP.com
www.ForteREP.com

Jim Jetland, SIOR
Principal
(952) 525-3333
Jim.Jetland@ForteREP.com
www.ForteREP.com



AERIAL VIEW

1991 Ford Parkway | Saint Paul, Minnesota



Katie Trevena
Vice President
(952) 525-3332
Katie.Trevena@ForteREP.com
www.ForteREP.com

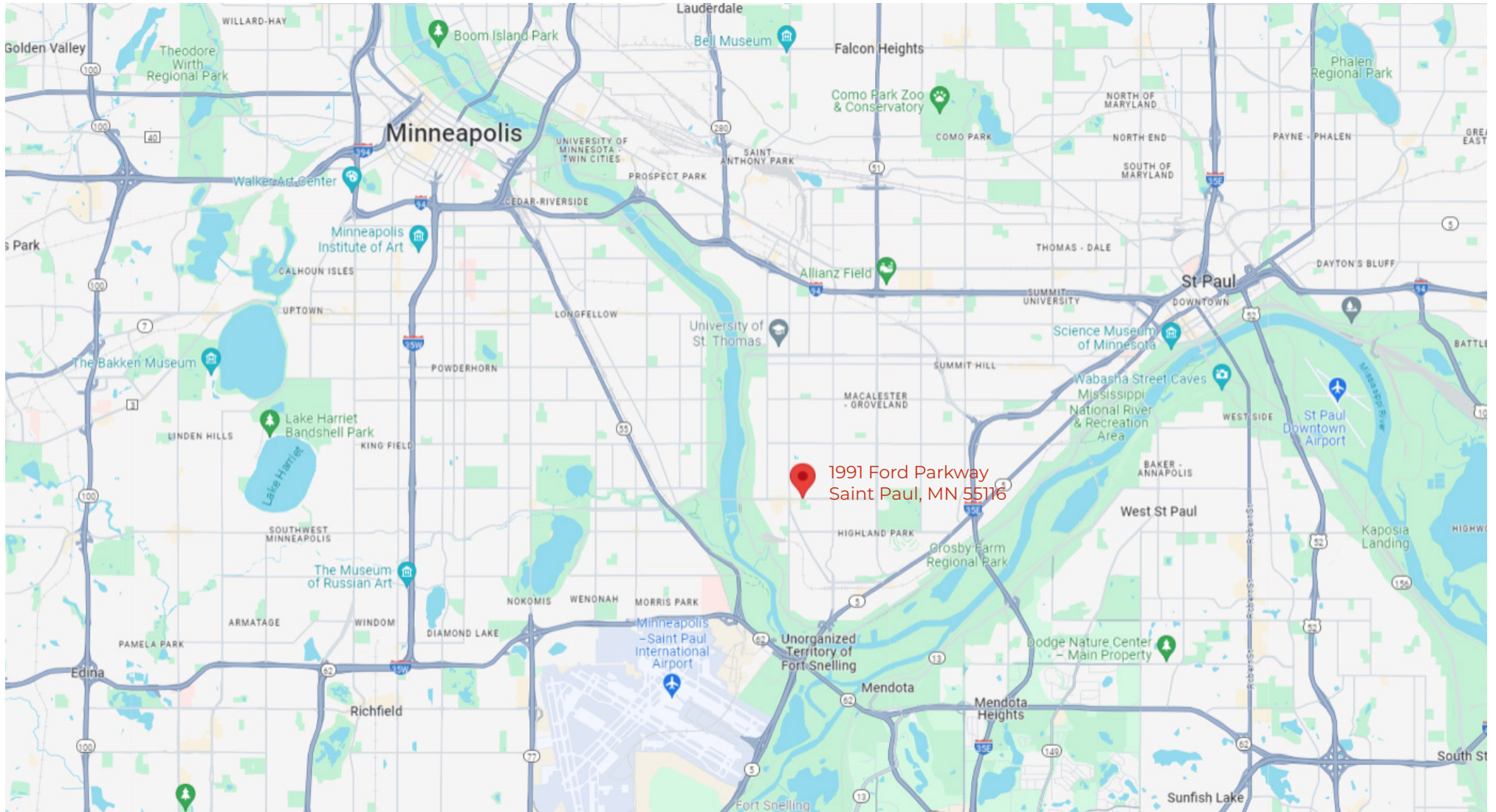
Ericka Miller, CCIM
Vice President
(952) 854-8309
Ericka.Miller@ForteREP.com
www.ForteREP.com

Jim Jetland, SIOR
Principal
(952) 525-3333
Jim.Jetland@ForteREP.com
www.ForteREP.com



MAP

1991 Ford Parkway | Saint Paul, Minnesota



Katie Trevena
Vice President
(952) 525-3332
Katie.Trevena@ForteREP.com
www.ForteREP.com

Ericka Miller, CCIM
Vice President
(952) 854-8309
Ericka.Miller@ForteREP.com
www.ForteREP.com

Jim Jetland, SIOR
Principal
(952) 525-3333
Jim.Jetland@ForteREP.com
www.ForteREP.com



DEMOGRAPHICS

1991 Ford Parkway | Saint Paul, Minnesota

Within a 5-Mile Radius



14,617

Total Businesses



276,525

Total Employees

KEY FACTS

369,631

Population

35.2

Median Age

2.3

Average Household Size

\$78,685

Median Household Income

This infographic contains data provided by Esri, Esri-Data Axle. The vintage of the data is 2024, 2029.

© 2024 Esri

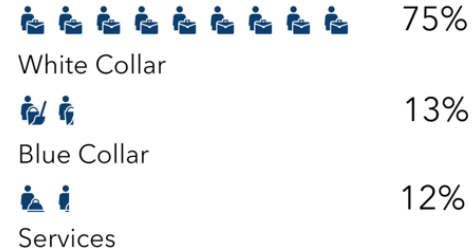
AGE PYRAMID



The largest group: 2024 Females Age 20-24
The smallest group: 2024 Males Age 85+

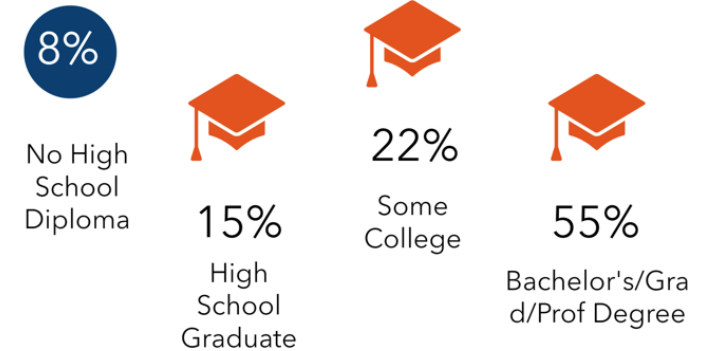
EMPLOYMENT & EDUCATION

EMPLOYMENT



4.3%
Unemployment Rate

EDUCATION



Katie Trevena
Vice President
(952) 525-3332
Katie.Trevena@ForteREP.com
www.ForteREP.com

Ericka Miller, CCIM
Vice President
(952) 854-8309
Ericka.Miller@ForteREP.com
www.ForteREP.com

Jim Jetland, SIOR
Principal
(952) 525-3333
Jim.Jetland@ForteREP.com
www.ForteREP.com

