

2740 SE 14th Street

2740 SE 14th Street
Des Moines, IA 50320
www.cbre.com/desmoines

Property Overview

This 1.473-acre property offers exceptional visibility and access along one of the city's busiest thoroughfares. The site is well suited for redevelopment for retail, office, or service-based businesses. The site is currently zoned MX3-V Mixed Use District, the lot supports a wide range of commercial uses, making it a flexible option for entrepreneurs and established businesses alike.

Lot Size

+ 1.473 Acres (64,180 SF)

Pricing

+ \$5.00/SF or \$320,900

Site Features

- + Situated on SE 14th Street - 31,800 VPD
- + Includes a 1,008 SF structure
- + Zoned: MX3-V Mixed Use District
- + Convenient ingress and egress directly from SE 14th Street.
- + Located in a growing commercial district with nearby retail, dining, and residential developments.



2740 SE 14th Street
Des Moines, IA 50320

For Sale

Site Plan

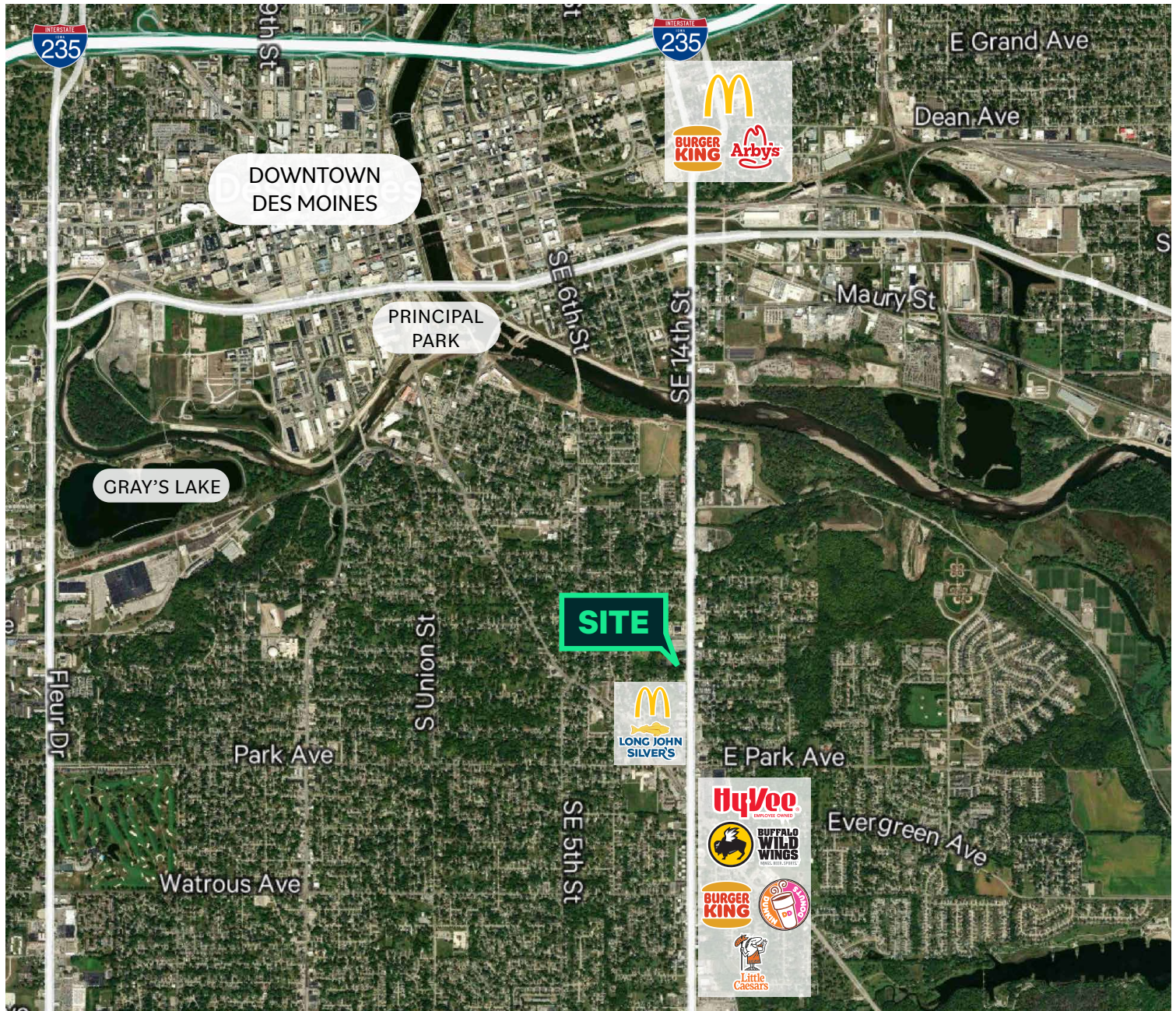


**1.473 ACRES
(64,180 SF)**

2740 SE 14th Street
Des Moines, IA 50320

For Sale

Location



Contact Us

Mike Macri III, CCIM, MRED, CRE

Vice President

+1 515 415 6120

mike.macri@cbre.com

Licensed in the State of Iowa

© 2025 CBRE, Inc. All rights reserved. This information has been obtained from sources believed reliable, but has not been verified for accuracy or completeness. You should conduct a careful, independent investigation of the property and verify all information. Any reliance on this information is solely at your own risk. CBRE and the CBRE logo are service marks of CBRE, Inc. All other marks displayed on this document are the property of their respective owners, and the use of such logos does not imply any affiliation with or endorsement of CBRE. Photos herein are the property of their respective owners. Use of these images without the express written consent of the owner is prohibited.

www.cbre.com/desmoines

CBRE