

# 2222 S. I-75 BUSINESS LOOP

GRAYLING, MI 49738

DAVID GREENE

248.352.5000

dgreene@firstcommercial.net



## OFFERING SUMMARY

Sale Price: Make an Offer

Building Size: 4,584 SF

## LOCATION OVERVIEW

This former Big Boy is positioned in the main commercial shopping district of Grayling, MI. This district includes Family Fare (only major grocery store in Crawford County), Family Dollar, McDonald's, Secretary of State office plus many more national chains. The building is positioned on the northern most portion of the Grayling Town Center. This site has great visibility and access of I-75 Business Loop (18,000 VPD). The parcel is 1.41 Acres. This site is approved for retail marijuana.

## DEMOGRAPHICS

	1 MILE	3 MILES	5 MILES
Total Households	494	1,999	2,679
Total Population	1,468	4,637	6,159
Average HH Income	\$51,572	\$58,579	\$59,756

FOR SALE



# 2222 S. I-75 BUSINESS LOOP

GRAYLING, MI 49738

DAVID GREENE

248.352.5000

dgreene@firstcommercial.net



FOR SALE



# 2222 S. I-75 BUSINESS LOOP

GRAYLING, MI 49738

DAVID GREENE

248.352.5000

dgreene@firstcommercial.net



FOR SALE

**FIRST COMMERCIAL**  
REALTY & DEVELOPMENT COMPANY, INC.



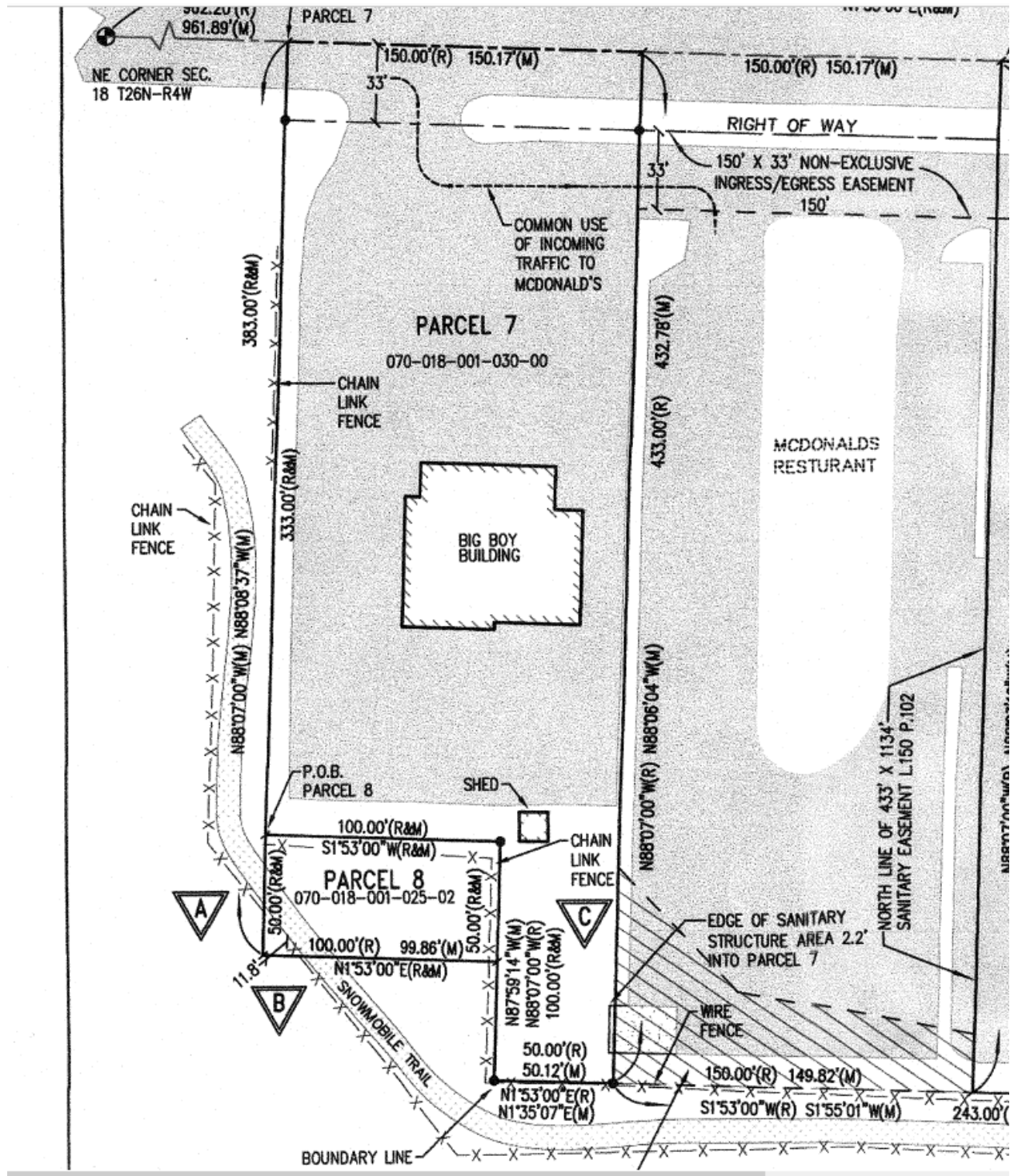
# 2222 S. I-75 BUSINESS LOOP

GRAYLING, MI 49738

DAVID GREENE

248.352.5000

dgreene@firstcommercial.net



FOR SALE



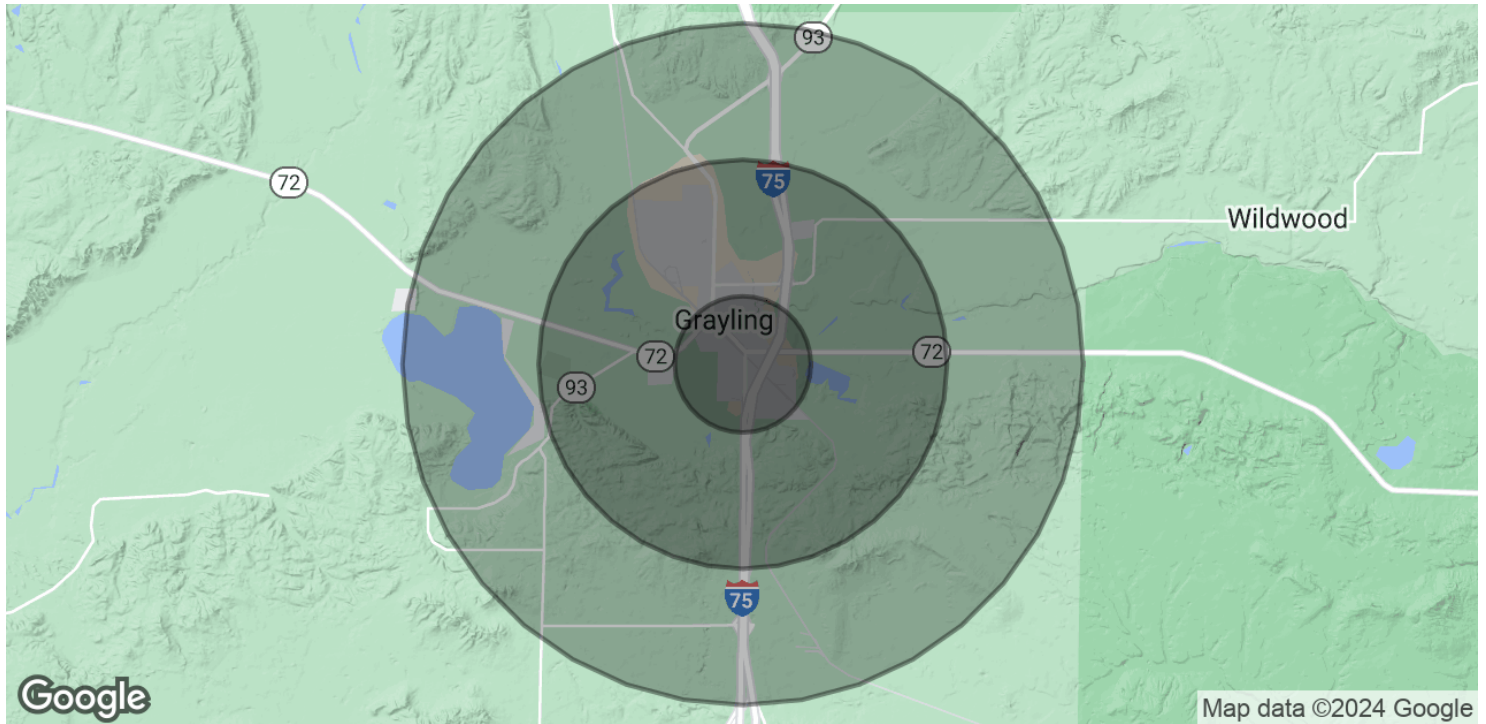
# 2222 S. I-75 BUSINESS LOOP

GRAYLING, MI 49738

DAVID GREENE

248.352.5000

dgreene@firstcommercial.net



POPULATION	1 MILE	3 MILES	5 MILES
Total Population	1,468	4,637	6,159
Average age	41.8	43.5	44.7
Average age (Male)	40.7	41.2	43.0
Average age (Female)	44.0	44.3	45.5

HOUSEHOLDS & INCOME	1 MILE	3 MILES	5 MILES
Total households	633	1,999	2,679
# of persons per HH	2.4	2.3	2.3
Average HH income	\$51,572	\$58,579	\$59,756
Average house value	\$80,429	\$93,454	\$96,992

\* Demographic data derived from 2020 ACS - US Census

FOR SALE

