

GOVERNORS PLACE

110 THOMAS JOHNSON DRIVE, FREDERICK, MD 21702



OFFERING SUMMARY

Lease Rate:	Negotiable
Building Size:	114,478 SF
Available SF:	3,200 - 17,792 SF
Lot Size:	22.43 Acres
Floors:	4
Renovated:	2019
Elevators:	Professional Business (PB)
Market:	Frederick
Market:	Frederick

PROPERTY OVERVIEW

Governors Place is a Frederick landmark property. Space availability includes ready-to-go space as well as some shell space that the Owner will fit-out. Awesome views from the fourth floor, lots of parking, convenient location and reputable landlord and management.

PROPERTY HIGHLIGHTS

- Immediately availability
- Flexible suite sizes
- Fresh new renovations
- Excellent visibility
- Maximum contiguous suite - 17,792
- Immediately available
- Amazing window lines



JUSTIN AUSHERMAN

240.578.4220
JUSTIN@AUSHCO.COM

201 Thomas Johnson Drive Suite 202 | Frederick, MD 21701 | [AUSHCO.COM](https://www.aushco.com)

GOVERNORS PLACE

110 THOMAS JOHNSON DRIVE, FREDERICK, MD 21702



JUSTIN AUSHERMAN

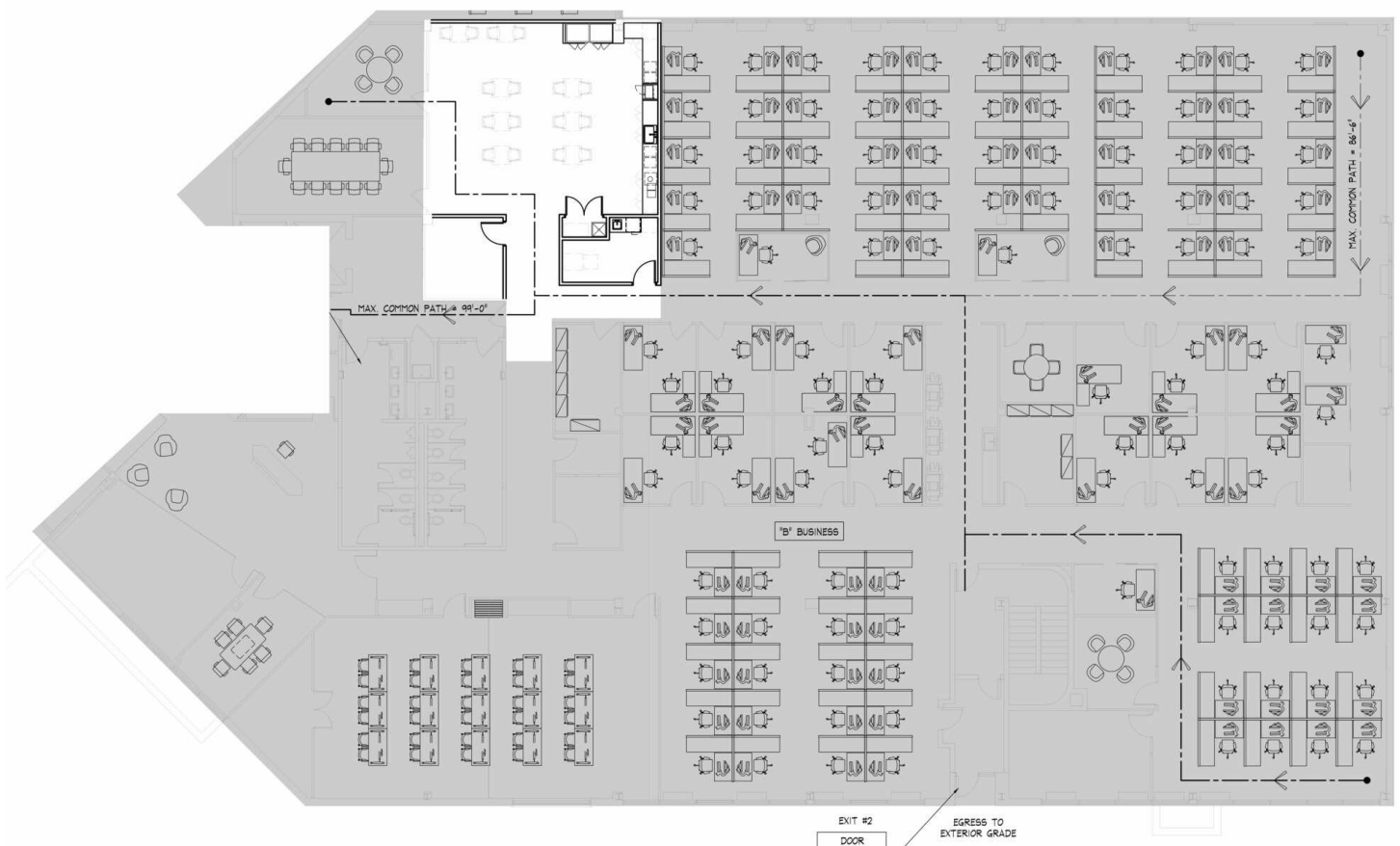
240.578.4220

JUSTIN@AUSHCO.COM

201 Thomas Johnson Drive Suite 202 | Frederick, MD 21701 | [AUSHCO.COM](https://www.aushco.com)

GOVERNORS PLACE

110 THOMAS JOHNSON DRIVE, FREDERICK, MD 21702



17,792 square feet available; demisable down to 3,200 square feet.



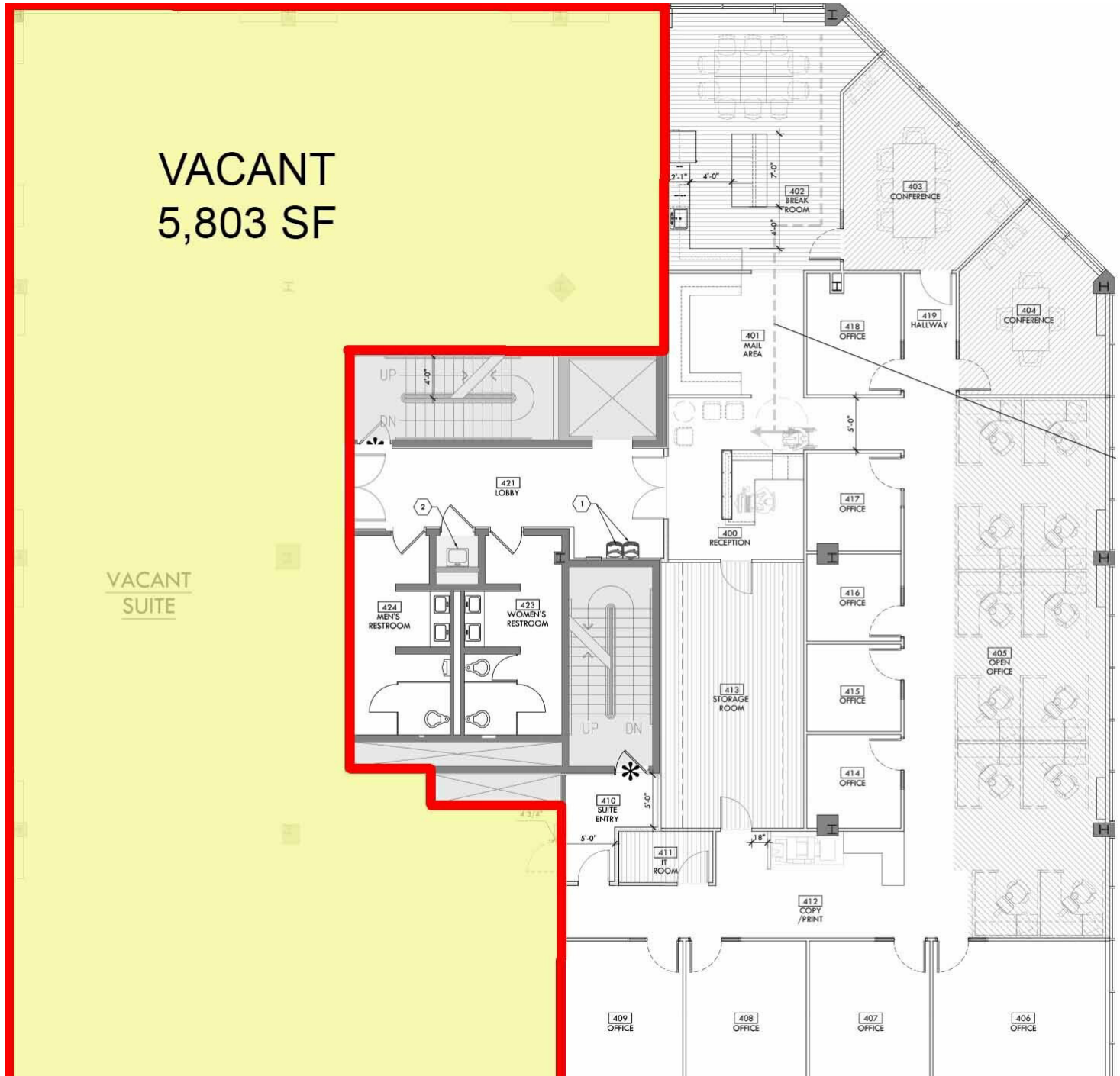
JUSTIN AUSERMAN

240.578.4220
JUSTIN@AUSHCO.COM

201 Thomas Johnson Drive Suite 202 | Frederick, MD 21701 | [AUSHCO.COM](https://www.aushco.com)

GOVERNORS PLACE

110 THOMAS JOHNSON DRIVE, FREDERICK, MD 21702



5,803 square feet. Owner will design and build new space.



JUSTIN AUSHERMAN

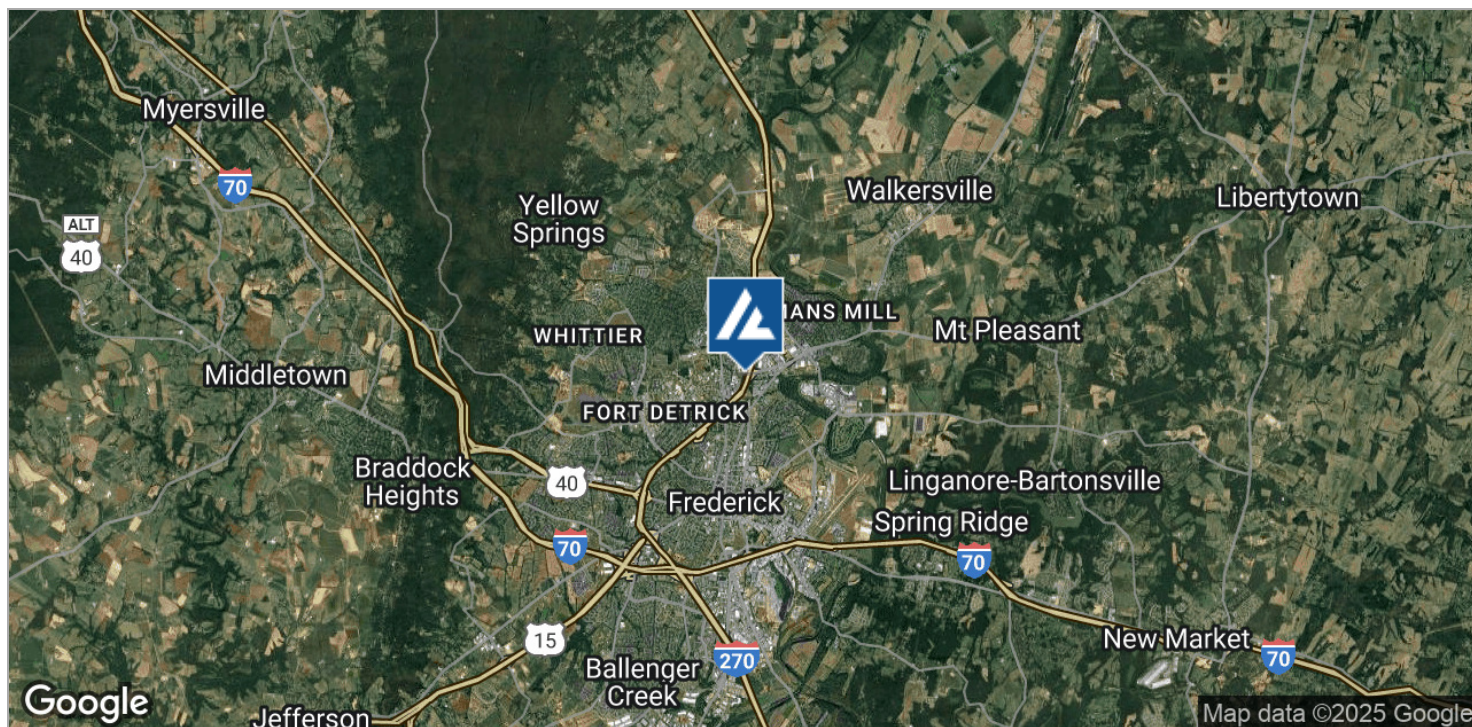
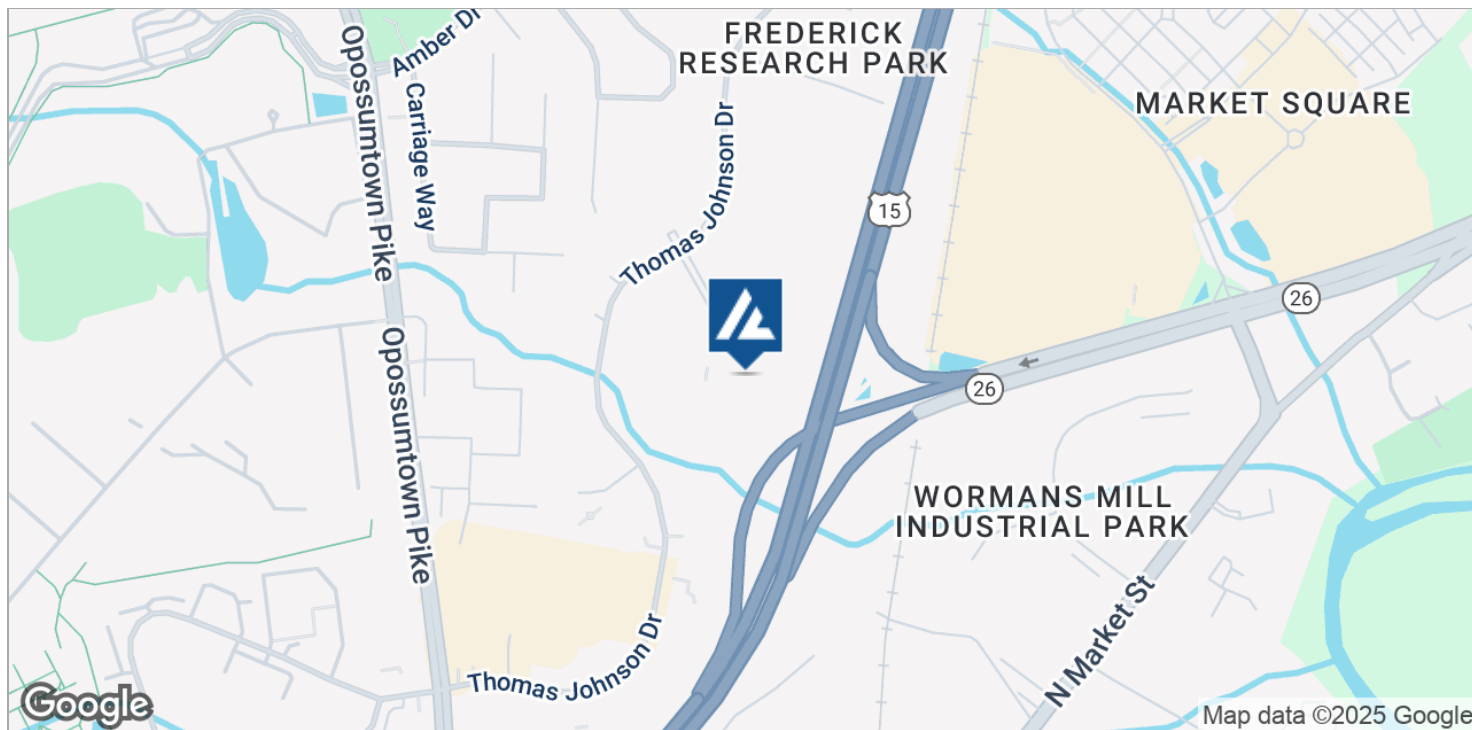
240.578.4220

JUSTIN@AUSHCO.COM

201 Thomas Johnson Drive Suite 202 | Frederick, MD 21701 | AUSHCO.COM

GOVERNORS PLACE

110 THOMAS JOHNSON DRIVE, FREDERICK, MD 21702



JUSTIN AUSHERMAN

240.578.4220

JUSTIN@AUSHCO.COM

201 Thomas Johnson Drive Suite 202 | Frederick, MD 21701 | [AUSHCO.COM](https://www.aushco.com)