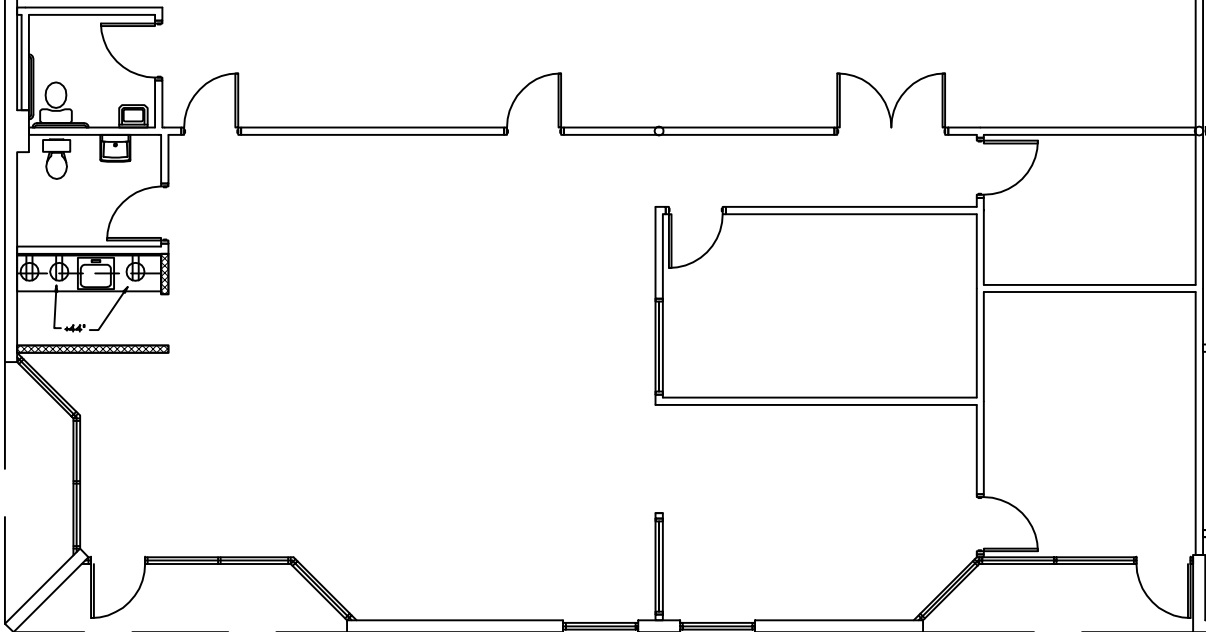


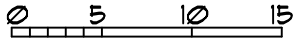
1,928 SF OFFICE
2,428 SF WAREHOUSE
4,356 SF TOTAL



SUITE A

SUITE B

7770 EAST ILIFF AVENUE



GRAPHIC SCALE

ILIFF BUSINESS PARK
EAST ILIFF AVENUE
ARAPAHOE COUNTY, COLORADO
3/32"=1'-0"

FALL RIVER INVESTMENTS (303) 752-2051