

# FOR SALE

**6921 Ray Wright Way**  
Columbus, Georgia 31820

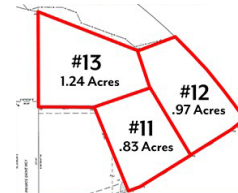
**3 Prime Out Lots**



### Available for immediate purchase

Three prime out lots fronting JR Allen Parkway in (HWY 80) and SR 85 in Midland Commons. Midland Commons an 88 acre Mixed Use Development located in East Columbus began construction in 2022 and continues to be developed today. Midland Commons is supported by a trade area of 503,124. Located on arterial route to Macon, Atlanta and East Alabama.

Lot 11	.83 acres	\$906,920
Lot 12	.97 acres	\$1,056,502
Lot 13	1.24 acres	\$1,353,375



## PROPERTY HIGHLIGHTS

- Anchored by 48,400 sf Publix
- 15,400 sf in line retail
- 65,000 sf Lifestyle Center
- 22 Loft apartments
- Zoning: PMUD
- Utilities run to the site
- Population: 200,167
- Average HH Income: \$97,466. 3 mile radius
- Traffic Count:
  - West JR Allen 34,400 vpd
  - East JR Allen 23,000 vpd
  - 85 North 23,100 vpd
- Rough graded pad
- Off site detention

For more information please contact:

**Wendy Elliott**  
706-325-3412

wendy.elliott@woodruffre.com

**Woodruff Brokerage Company**

2900 Warm Springs Road Columbus Georgia 31904  
706-323-6401