

±7,615 SF Freestanding Industrial Building  
For Sublease

**CBRE**

# 749 Old County Road San Carlos, California

## Property Highlights

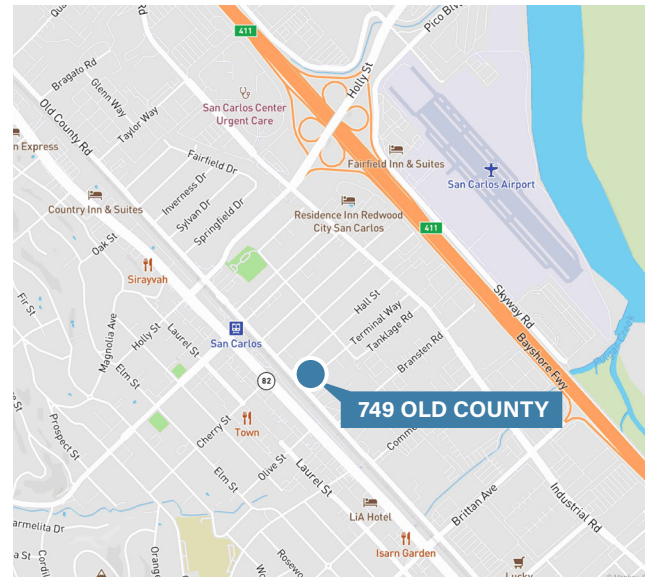
- ±7,615 SF Freestanding Industrial Building
- Newly renovated office and warehouse
- LED lighting
- Skylights
- Fully Conditioned
- (2) Restrooms
- (2) 14' grade-level doors
- Clear Height: 16'6" - 17'8"
- No sprinklers
- Billboard signage & Old County Rd frontage
- 0.2 miles from Caltrain station
- Rental Rate: \$2.00 / SF NNN
- OPEX: \$0.30 / SF
- LED: February 2028



## Contact Us

**Robert McSweeney**  
Senior Vice President  
+1 650 577 2928  
bob.mcsweeney@cbre.com  
Lic. 00934240

**Matt Murray**  
Associate  
+1 650 577 2934  
matt.murray@cbre.com  
Lic. 02083830



© 2025 CBRE, Inc. All rights reserved. This information has been obtained from sources believed reliable but has not been verified for accuracy or completeness. CBRE, Inc. makes no guarantee, representation or warranty and accepts no responsibility or liability as to the accuracy, completeness, or reliability of the information contained herein. You should conduct a careful, independent investigation of the property and verify all information. Any reliance on this information is solely at your own risk. CBRE and the CBRE logo are service marks of CBRE, Inc. All other marks displayed on this document are the property of their respective owners, and the use of such marks does not imply any affiliation with or endorsement of CBRE. Photos herein are the property of their respective owners. Use of these images without the express written consent of the owner is prohibited.

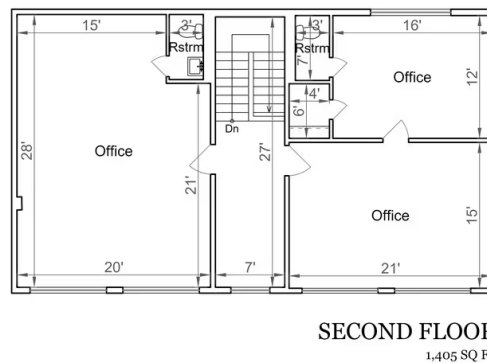
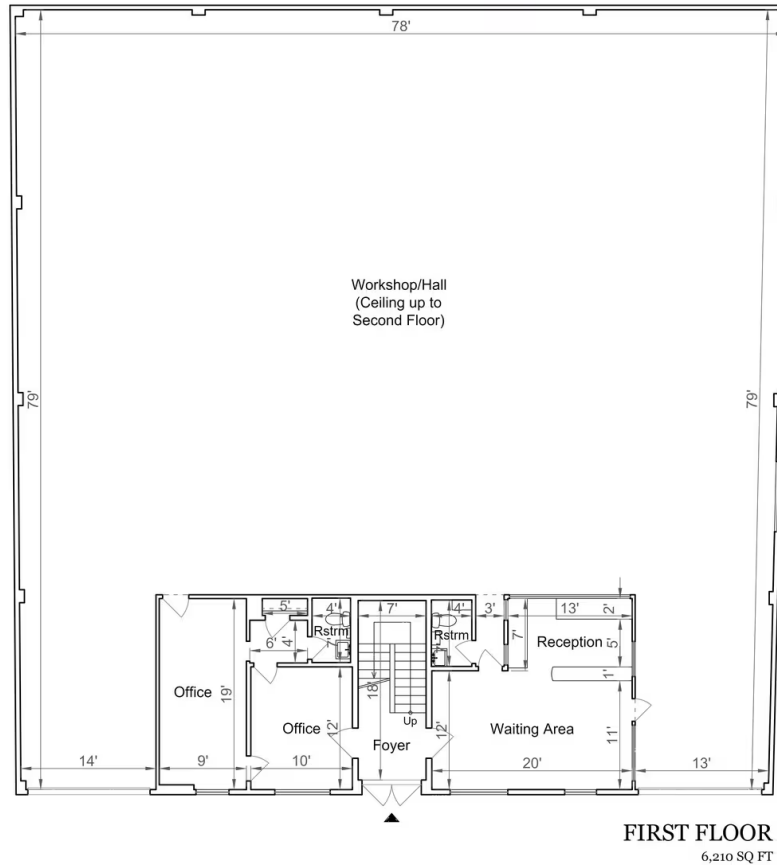
# ±7,615 SF Freestanding Industrial Building For Sublease



## Floor Plan

**749 OLD COUNTY ROAD**

SAN CARLOS, CA 94070



Estimated Total  
Square Footage: 7,615 SQ FT  
*Calculated from outside face of exterior walls.*

## Contact Us

**Robert McSweeney**  
Senior Vice President  
+1 650 577 2928  
bob.mcsweeney@cbre.com  
Lic. 00934240

**Matt Murray**  
Associate  
+1 650 577 2934  
matt.murray@cbre.com  
Lic. 02083830

749 Old County Rd  
San Carlos, California

For Sublease



## Contact Us

**Robert McSweeney**  
Senior Vice President  
+1 650 577 2928  
bob.mcsweeney@cbre.com  
Lic. 00934240

**Matt Murray**  
Associate  
+1 650 577 2934  
matt.murray@cbre.com  
Lic. 02083830

