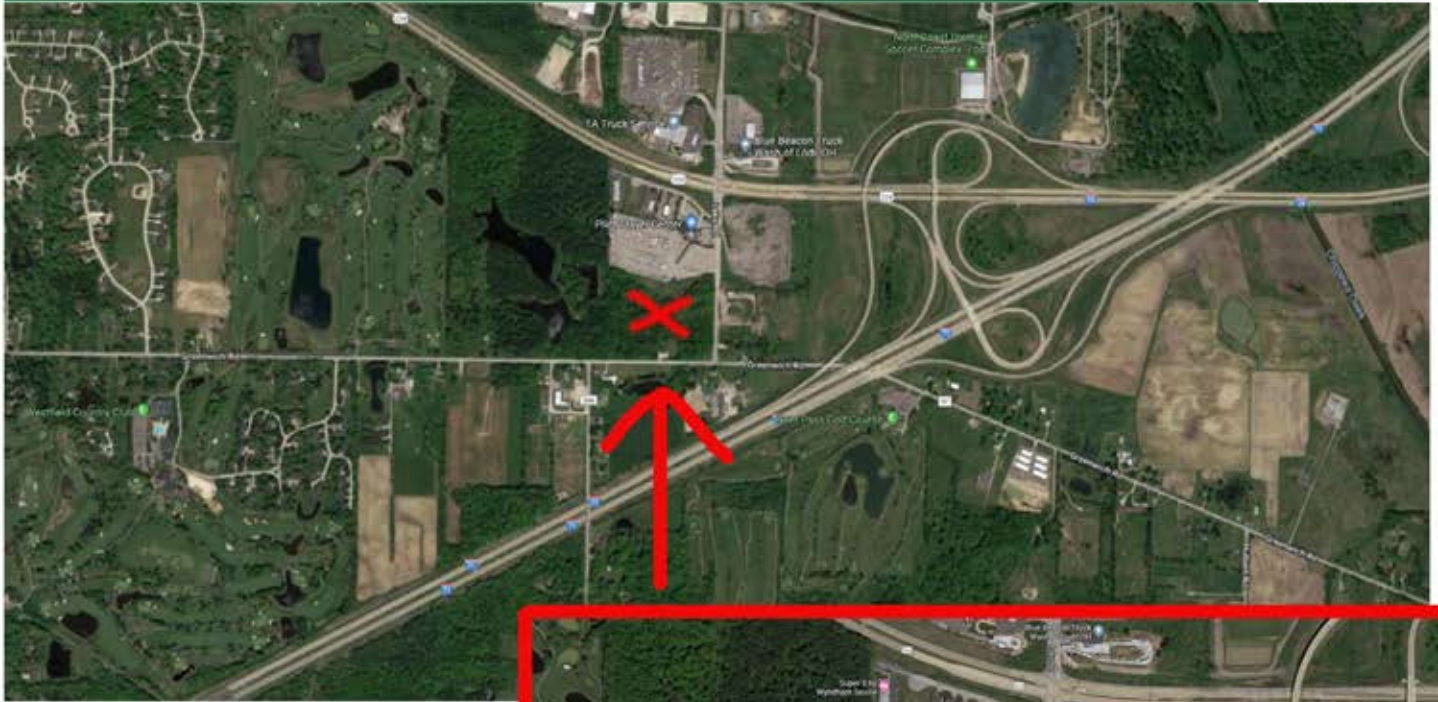


# STOUFFER REALTY, INC.



## For Sale

Junction  
Interstate 71  
Interstate 76

- > High Traffic Area
- > Adjacent High Truck Traffic
- > Extensive Sports Facilities in the area
- > Sewer, Water, Heavy Electric, Natural Gas
- > High Visibility from Major North-South Interstate and East-West Interstate
- > Perfect for Hotel/Motel and Restaurants
- > Corner Lot - Sits High and Well Drained
- > No Known Environmental Issues
- > Never Developed Ground
- > Zoned Highway Commercial
- > I-71 and I-76 Cloverleaf Exchange
- > 768' Footage on Lake Road
- > 820' Footage on Greenwich Road



\$900,000.000 Ground Lease Welcome

50,000 Cars a Day  
Interstate Visibility  
14 Plus Acres

William E. Snow Realtor 330-990-0256  
Stouffer Realty Inc 330-835-4900  
130 North Miller Road  
Fairlawn, Ohio 44333  
[wsnow@stoufferrealty.com](mailto:wsnow@stoufferrealty.com)

Lake Road and Greenwich Road Westfield Twp Medina County