



Keegan & Coppin
COMPANY, INC.

FOR SALE/LEASE

5464 SKYLANE BOULEVARD
UNIT E
SANTA ROSA, CA

OFFICE CONDO AVAILABLE IN SANTA
ROSA AIRPORT BUSINESS CENTER

Go beyond broker.

PRESENTED BY:

RHONDA DERINGER, PARTNER
LIC # 01206401 (707) 528-1400, EXT 267
RDERINGER@KEEGANCOPPIN.COM

BRIAN KEEGAN, PARTNER
LIC # 01809537 (707) 528-1400, EXT 249
BKEEGAN@KEEGANCOPPIN.COM



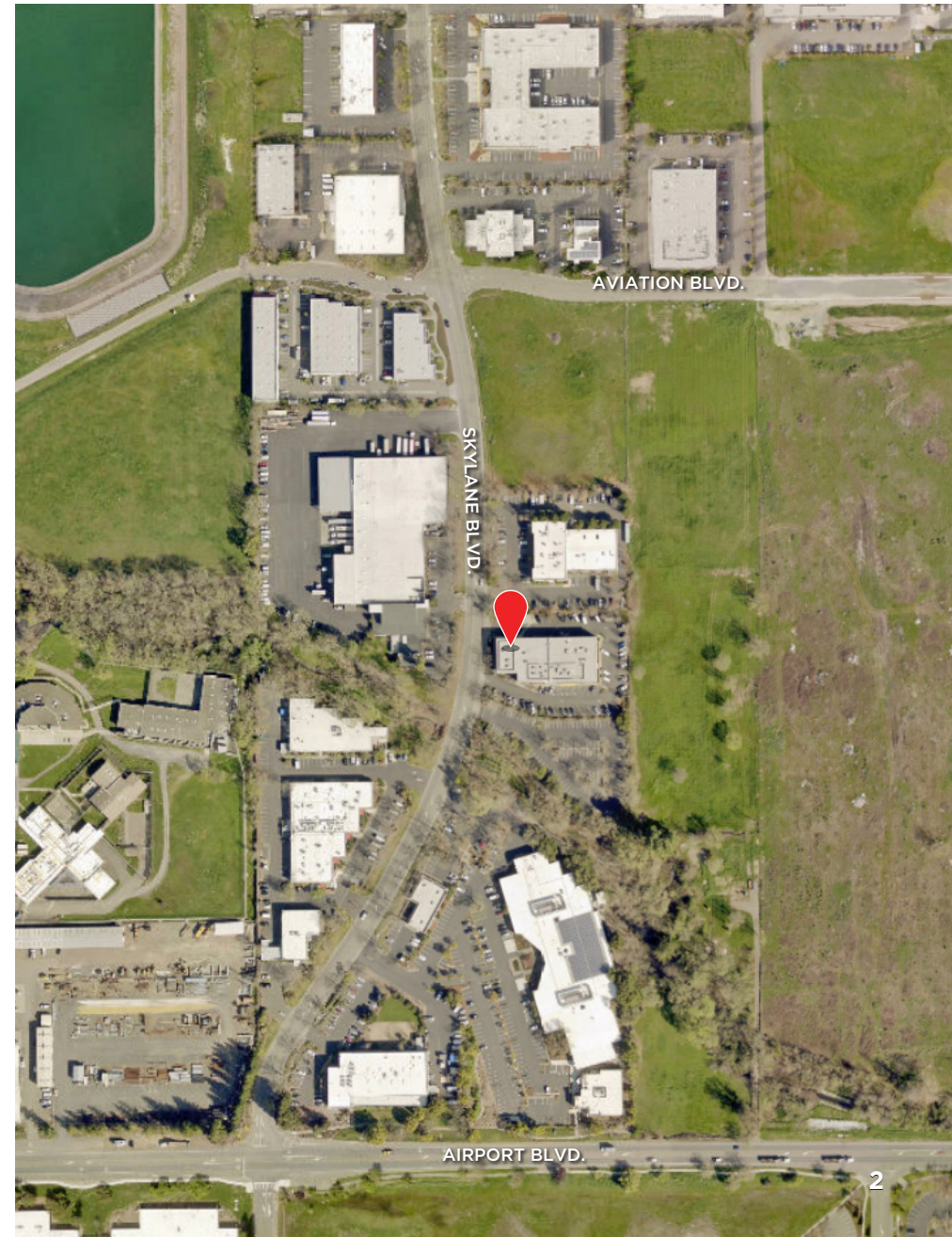
CONTENTS

EXECUTIVE SUMMARY	3
PROPERTY DESCRIPTION	4
FLOOR PLAN	5
PROPERTY PHOTOS	6
PARCEL MAP	7
AERIAL MAP	8
MARKET SUMMARY	9
ABOUT KEEGAN & COPPIN	10
DISCLAIMER	11



5464 SKYLANE BOULEVARD
UNIT E
SANTA ROSA, CA

**OFFICE CONDO
FOR SALE OR LEASE**





EXECUTIVE SUMMARY



5464 SKYLANE BOULEVARD
UNIT E
SANTA ROSA, CA

OFFICE CONDO FOR SALE OR LEASE

5464 SKYLANE BOULEVARD is ideally located in North Santa Rosa in the Airport Business Center. Just a few blocks to the Sonoma County Airport with air service provided by Alaska Airlines, Allegiant and American Airlines. It has easy access to Hwy 101 via Airport Blvd and to the West County via Slusser Road to River Road. The park has commanding views of surrounding hills and Mount St. Helena. Large redwoods and mature oak trees are nestled throughout the park. Over 50 acres of vineyards, dedicated as scenic easements, front along U.S. Highway 101.

- 1,440+/- rentable sf Office Condo on second floor
- High ceilings, concrete walls, exposed ducting, drop lighting and pendants, and jute carpeting throughout
- Great window line with views - Lots of Windows on 2 sides
- Three private offices
- Large open area
- Shared Kitchenette & Common Area Restrooms
- Monument Signage
- Business Park adjacent to Sonoma County Airport

OFFERING

Sale Price **\$320,000**
Price PSF **\$222+/-**

LEASE TERMS

Lease Rate **\$1.65**
PSFT GROSS

AIRPORT BUSINESS CENTER

Located at Sonoma County's Charles M. Schulz Airport, this first class research and development building is strategically located to provide access to the world's major research and manufacturing facilities through airport services. The airport runways are currently being lengthened to accommodate medium range jets capable of reaching most western cities.

The Airport Business Center park is located within the Sonoma County Airport Industrial Area Specific Plan area, which will ultimately accommodate 603 acres of industrial development (412 acres of industrial park and 191 acres of heavy industrial), 5 acres of retail commercial, and 140 acres of agricultural and open space.

Airport Business Center is headquarters for several leading companies, which were attracted to its excellent facilities for corporate offices, research and development, manufacturing and distribution. ABC is about five miles north of downtown Santa Rosa with easy access to U.S. Highway 101.

The Airport Business Center is the hub of medical/scientific activity in northern Sonoma County and includes such companies as Medtronic, TriVascular, Redwood Toxicology laboratory, Neilmed Pharmaceuticals, and Sonoma Orthopedic Products.

PRESENTED BY:

RHONDA DERINGER, PARTNER
KEEGAN & COPPIN CO., INC.
LIC # 01206401 (707) 528-1400, EXT 267
RDERINGER@KEEGANCOPPIN.COM

BRIAN KEEGAN, PARTNER
KEEGAN & COPPIN CO., INC.
LIC # 01809537 (707) 528-1400, EXT 249
BKEEGAN@KEEGANCOPPIN.COM

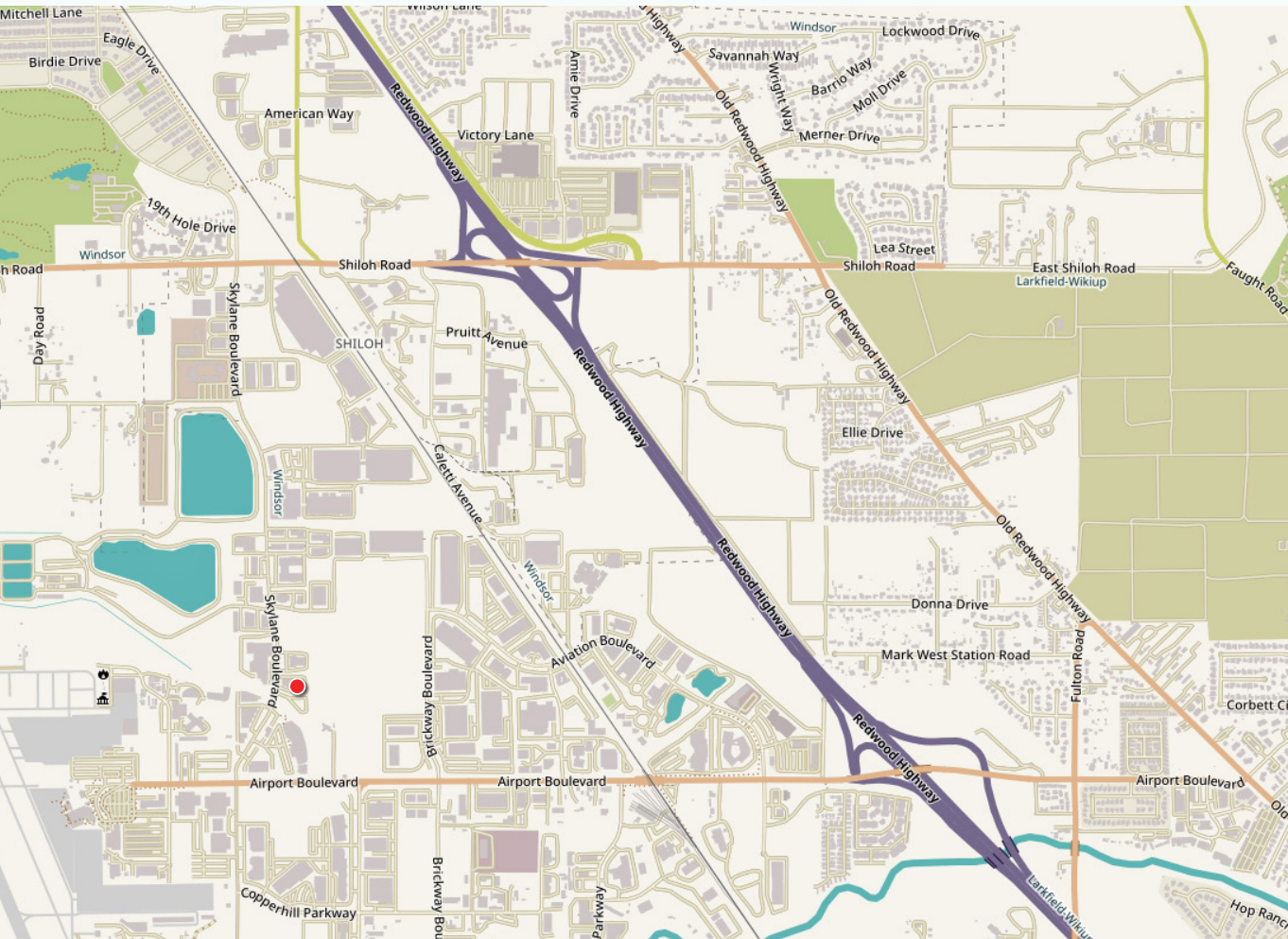


PROPERTY DESCRIPTION



5464 SKYLANE BOULEVARD
UNIT E
SANTA ROSA, CA

**OFFICE CONDO
FOR SALE OR LEASE**



TOTAL BUILDING SIZE
13,400+/- SF

UNIT SIZE
1,440+/- SF

ZONING
MP (Industrial Park)

PARKING
5+/- On-Site Parking Spaces

DESCRIPTION OF AREA
Blocks from the Smart Train Terminal. Just a short distance from main terminal of Sonoma County Charles Schulz Airport. Easy access to Highway 101.

PRESENTED BY:

RHONDA DERINGER, PARTNER
KEEGAN & COPPIN CO., INC.
LIC # 01206401 (707) 528-1400, EXT 267
RDERINGER@KEEGANCOPPIN.COM

BRIAN KEEGAN, PARTNER
KEEGAN & COPPIN CO., INC.
LIC # 01809537 (707) 528-1400, EXT 249
BKEEGAN@KEEGANCOPPIN.COM

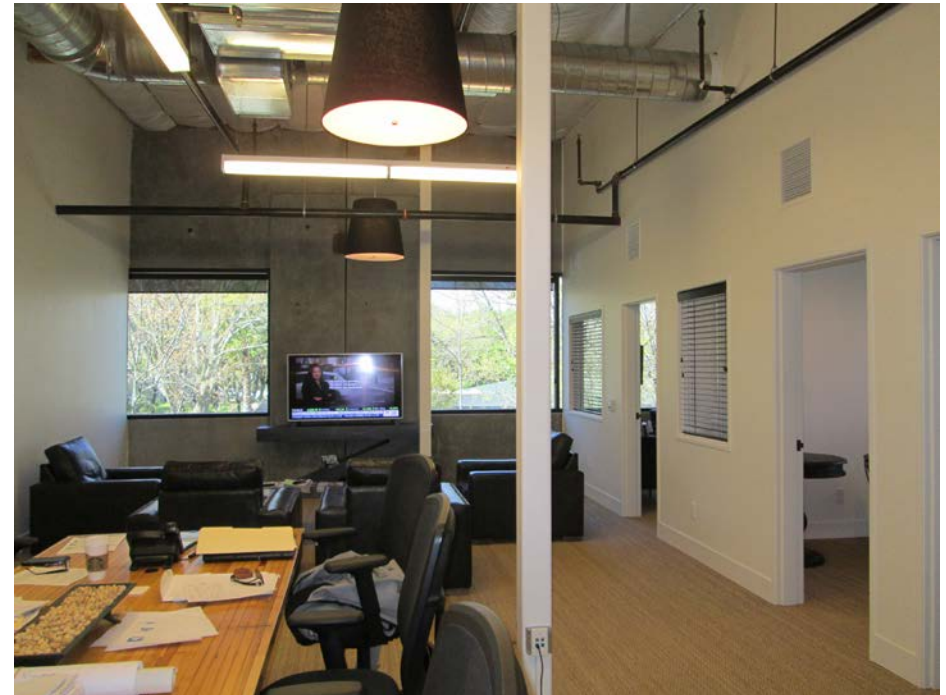
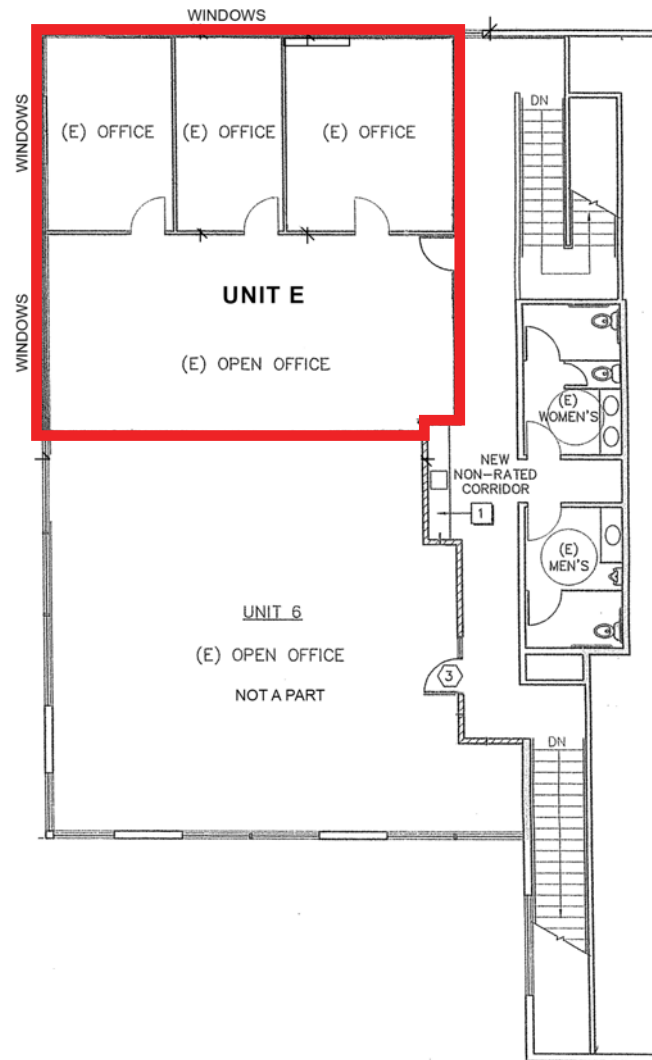


FLOOR PLAN



5464 SKYLANE BOULEVARD
UNIT E
SANTA ROSA, CA

OFFICE CONDO
FOR SALE OR LEASE



PRESENTED BY:

RHONDA DERINGER, PARTNER
KEEGAN & COPPIN CO., INC.
LIC # 01206401 (707) 528-1400, EXT 267
RDERINGER@KEEGANCOPPIN.COM

BRIAN KEEGAN, PARTNER
KEEGAN & COPPIN CO., INC.
LIC # 01809537 (707) 528-1400, EXT 249
BKEEGAN@KEEGANCOPPIN.COM



PROPERTY PHOTOS



5464 SKYLINE BOULEVARD
UNIT E
SANTA ROSA, CA

OFFICE CONDO
FOR SALE OR LEASE



PRESENTED BY:

RHONDA DERINGER, PARTNER
KEEGAN & COPPIN CO., INC.
LIC # 01206401 (707) 528-1400, EXT 267
RDERINGER@KEEGANCOPPIN.COM

BRIAN KEEGAN, PARTNER
KEEGAN & COPPIN CO., INC.
LIC # 01809537 (707) 528-1400, EXT 249
BKEEGAN@KEEGANCOPPIN.COM

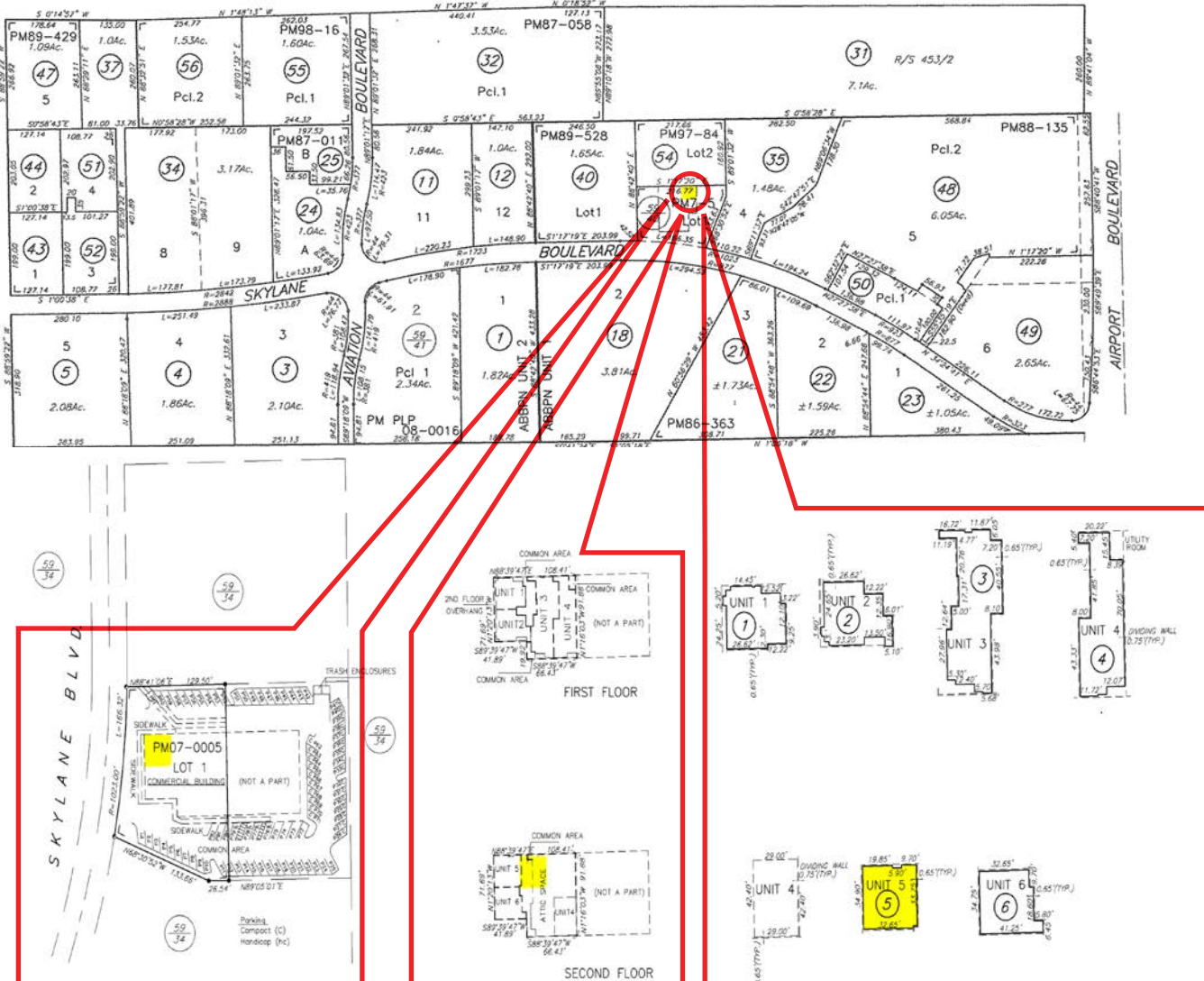


PARCEL MAP & LOT MAP



5464 SKYLANE BOULEVARD
UNIT E
SANTA ROSA, CA

OFFICE CONDO
FOR SALE OR LEASE



PRESENTED BY:

RHONDA DERINGER, PARTNER
KEEGAN & COPPIN CO., INC.
LIC # 01206401 (707) 528-1400, EXT 267
RDERINGER@KEEGANCOPPIN.COM

BRIAN KEEGAN, PARTNER
KEEGAN & COPPIN CO., INC.
LIC # 01809537 (707) 528-1400, EXT 249
BKEEGAN@KEEGANCOPPIN.COM



AERIAL MAP



5464 SKYLANE BOULEVARD
UNIT E
SANTA ROSA, CA

OFFICE CONDO
FOR SALE OR LEASE



PRESENTED BY:

RHONDA DERINGER, PARTNER
KEEGAN & COPPIN CO., INC.
LIC # 01206401 (707) 528-1400, EXT 267
RDERINGER@KEEGANCOPPIN.COM

BRIAN KEEGAN, PARTNER
KEEGAN & COPPIN CO., INC.
LIC # 01809537 (707) 528-1400, EXT 249
BKEEGAN@KEEGANCOPPIN.COM

The above information, while not guaranteed, has been secured from sources we believe to be reliable. Submitted subject to error, change or withdrawal. An interested party should verify the status of the property and the information herein.

Map created using ArcGIS® software by Esri. ArcGIS® is the intellectual property of Esri and is used herein under license. Copyright © Esri.



MARKET SUMMARY



5464 SKYLANE BOULEVARD
UNIT E
SANTA ROSA, CA

OFFICE CONDO FOR SALE OR LEASE



SANTA ROSA SUMMARY

Santa Rosa, California is the county seat of Sonoma County. It is the largest city in the North Bay Area and all of California's Wine Country. The city of Santa Rosa is the North Bay's premier location and as a business and service hub, Santa Rosa is the economic engine that drives the region.

As the largest city between Portland and San Francisco, Santa Rosa serves a four county region as the hub for technology and entrepreneurial businesses, retail, banking and employment. Santa Rosa has a dynamic and well-balanced economy, anchored by strengths in tourism, high-tech manufacturing and retail. Residents enjoy a superb quality of life while employers benefit from a skilled workforce. Santa Rosans have a deep appreciation for the arts, education, conscientious business development and quality living.

The city of Santa Rosa offers a one-stop permitting process, easy access to Economic Development program staff and Community Development staff, collaborative partnerships with key business players; from our local chambers of commerce, the higher education institutes, brokers, benchmark industries, and community organizations to a global venture community, just to name a few.

The city of Santa Rosa is conveniently located just 55 miles north of San Francisco via the Golden Gate Bridge. Santa Rosa is a main shopping hub for the

surrounding neighborhoods near and along the 101 corridor, such as Petaluma, Rohnert Park, Windsor, Sonoma, Healdsburg, and Sebastopol. Santa Rosa has several prominent shopping districts, including Downtown, Santa Rosa Avenue, and Montgomery Village, offering a variety of general retail, boutique shops, dining, and entertainment. There are two regional shopping malls, Coddington Mall and Santa Rosa Plaza.

Home to approx. 500,000 people, Sonoma County is a prime location for tourism as well as residence. Just a short drive from the San Francisco Bay Area, there are nine incorporated cities in the county, in addition to seventeen unincorporated areas. The city of Santa Rosa is the most populous area, home to approximately one-third of the county's population and was recently named as one of the nation's "most livable communities" by Partners for Livable Communities.

Sonoma County's unemployment rate is one of the lowest in California and the county continues to show long-term job growth in the health care, hospitality and business service sectors. For the leisure, hospitality, educational and health services, which includes trade schools, social workers and health care professionals, has seen employment growth improve on a year-over-year basis. And business and professional services jobs have increased from a year earlier. In addition, new housing continues to increase throughout the county, while job growth and taxable sales also continue to rise.

PRESENTED BY:

RHONDA DERINGER, PARTNER
KEEGAN & COPPIN CO., INC.
LIC # 01206401 (707) 528-1400, EXT 267
RDERINGER@KEEGANCOPPIN.COM

BRIAN KEEGAN, PARTNER
KEEGAN & COPPIN CO., INC.
LIC # 01809537 (707) 528-1400, EXT 249
BKEEGAN@KEEGANCOPPIN.COM

Keegan & Coppin Company, Inc.
The above information, while not guaranteed, has been secured from sources we believe to be reliable. Submitted subject to error, change or withdrawal. An interested party should verify the status of the property and the information herein.



ABOUT KEEGAN & COPPIN



5464 SKYLANE BOULEVARD
UNIT E
SANTA ROSA, CA

OFFICE CONDO
FOR SALE OR LEASE



Your partner in commercial real estate in the North Bay & beyond since 1976.

Keegan & Coppin Company, Inc. has served our communities in the North Bay for well over 40 years. But our unmatched local experience is only part of what makes us the area's most trusted name in commercial real estate. At Keegan & Coppin, we bring together a range of services that go beyond traditional brokerage. That depth of knowledge and diverse skillset allows us to clarify and streamline all aspects of your transaction, giving you the confidence of knowing that we can help with anything that comes up through all phases of a project.

Keegan & Coppin Company, Inc.

The above information, while not guaranteed, has been secured from sources we believe to be reliable. Submitted subject to error, change or withdrawal. An interested party should verify the status of the property and the information herein.



DISCLAIMER



5464 SKYLANE BOULEVARD
UNIT E
SANTA ROSA, CA

OFFICE CONDO
FOR SALE OR LEASE

DISCLAIMER

This property is being offered on an as-is basis. While the Broker believes the information in this brochure to be accurate, no warranty or representation is made as to its accuracy or completeness. Interested parties should conduct independent investigations and reach conclusions without reliance on materials contained in this brochure.

This property owner requests that you do not disturb the Tenants, as the property will only be shown in coordination with the Listing Agent.

This brochure is presented under the terms and conditions of the Confidentiality Agreement. As such, the material contained in this brochure is confidential and is provided solely for the purpose of considering the purchase of the property described herein. Offers should be presented to the agent for the property owner. Prospective buyers are encouraged to provide buyer's background, source of funds and any other information that would indicate their ability to complete the transaction smoothly.

Keegan & Coppin Co., Inc.
1355 N Dutton Ave.
Santa Rosa, CA 95401
www.keegancoppin.com
(707) 528-1400

The above information, while not guaranteed, has been secured from sources we believe to be reliable. Submitted subject to error, change or withdrawal. An interested party should verify the status of the property and the information herein.

PRESENTED BY:

RHONDA DERINGER, PARTNER
LIC # 01206401 (707) 528-1400, EXT 267
RDERINGER@KEEGANCOPPIN.COM

BRIAN KEEGAN, PARTNER
LIC # 01809537 (707) 528-1400, EXT 249
BKEEGAN@KEEGANCOPPIN.COM