

# MOUNTAIN PARK PLAZA

11830 SW Kerr Parkway | Lake Oswego OR 97035

FOR LEASE



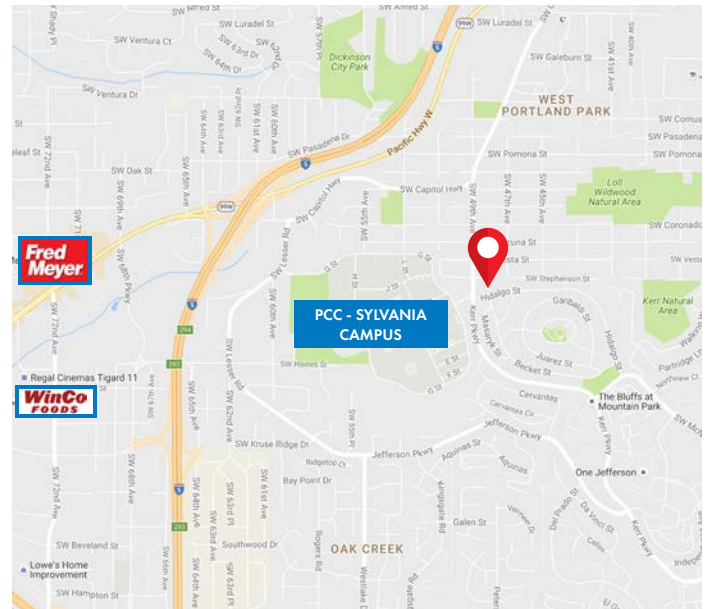
## RETAIL/OFFICE SPACE AVAILABLE FOR LEASE

### DETAILS

- Lease rate: \$17.25 PSF Full Service
- Rentable area: ± 900 - 2,724 SF
- Rare retail vacancies: ± 2,100 and 1,380 SF

### FEATURES

- Ample free parking
- Elevator served
- Local ownership
- Home to Walter Mitty's Restaurant
- Located across from PCC Sylvania
- Along frequent TriMet bus lines
- Close to I-5 and SW Barbur Blvd.
- East of Tigard Triangle
- Lake Oswego zip code



04.26.2024

For more information or a property tour, please contact:

**DOUG CARTER**

503.225.8499

DougC@norris-stevens.com



*Information contained herein has been obtained from others and considered to be reliable; however, a prospective purchaser or lessee is expected to verify all information to their own satisfaction.*

## Norris & Stevens

INVESTMENT REAL ESTATE SERVICES

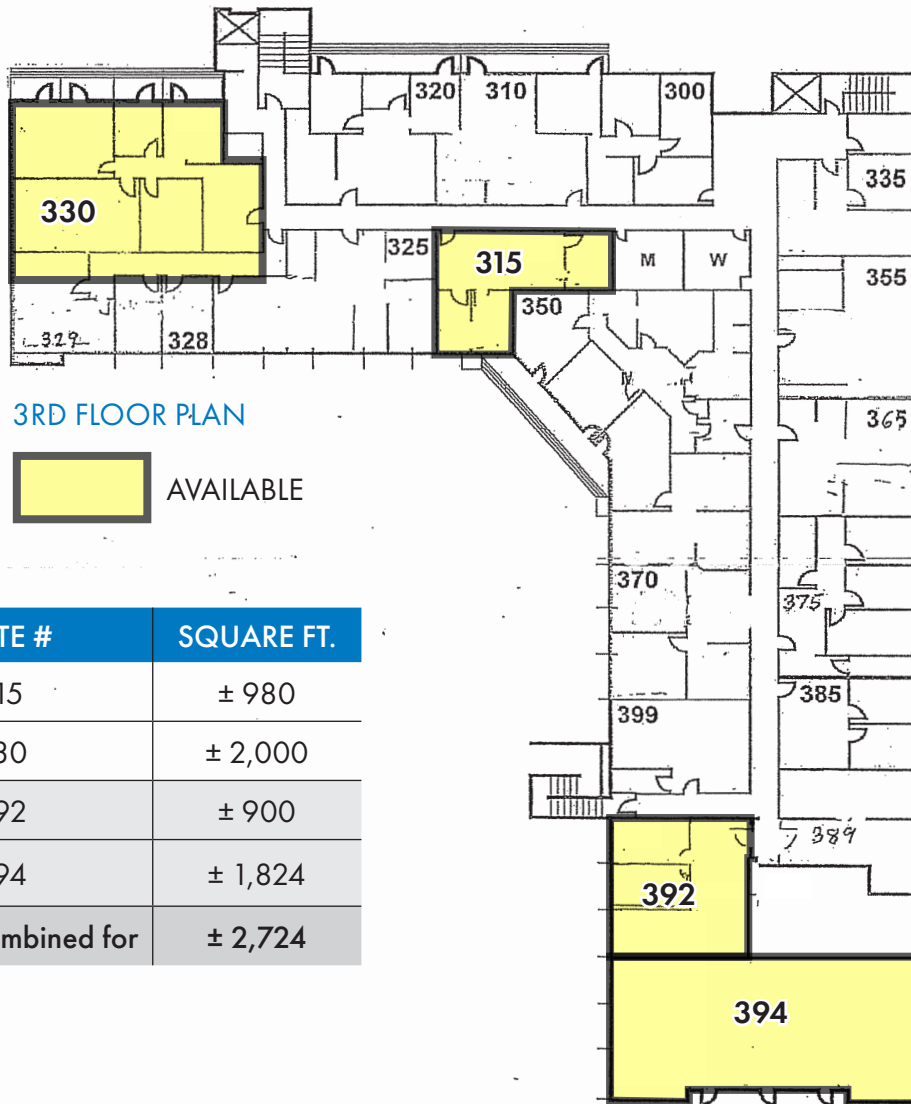
900 SW 5th Avenue • 17th Floor • Portland, OR 97204  
503.223.3171 • norris-stevens.com

# MOUNTAIN PARK PLAZA

11830 SW Kerr Parkway | Lake Oswego OR 97035

FOR LEASE

PHOTOS / FLOOR PLAN



SUITE #	SQUARE FT.
315	± 980
330	± 2,000
392	± 900
394	± 1,824
Can be Combined for	± 2,724

For more information or a property tour, please contact:

**DOUG CARTER**  
 503.225.8499  
 DougC@norris-stevens.com

**Norris & Stevens**

INVESTMENT REAL ESTATE SERVICES



Information contained herein has been obtained from others and considered to be reliable; however, a prospective purchaser or lessee is expected to verify all information to their own satisfaction.

900 SW 5th Avenue • 17th Floor • Portland, OR 97204  
 503.223.3171 • norris-stevens.com