

Car Wash Land for Sale

11105 Bloomfield Drive, Orlando, Florida

Shadow outparcel site by UCF, State Road 408, and Waterford Lakes



Location Information:

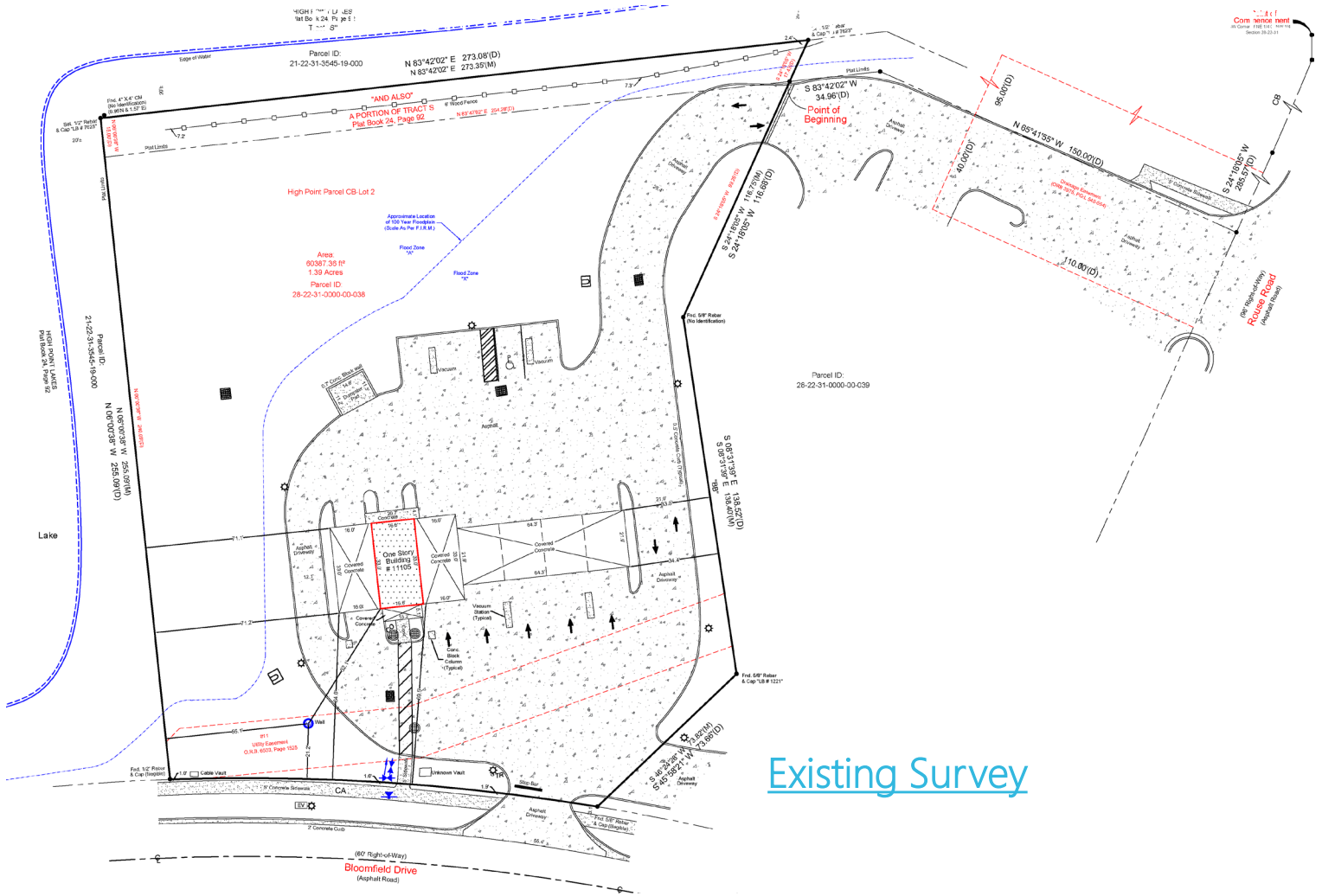
- Second Generation land use on 1.38 acre site
- Located adjacent to busy Circle K gas station with cross access at lighted intersection
- All impact fees paid and credited for current self-service car wash use
- Current P-D zoning with allowable modification to any C-1 commercial zoning uses, Orange County
- Near busy University of Central Florida campus
- Visibility from northbound Rouse Road and Bloomfield Drive at corner intersection
- 2.4 miles from State Road 417 and State Road 408 Interchange, 10 miles to Downtown Orlando
- Nearby State Road 408 full interchange onto Rouse Road

Average Daily Traffic Counts:

ROUSE ROAD: 18,000 VPD

STATE ROAD 408:

2nd Generation Retail Land for Sale



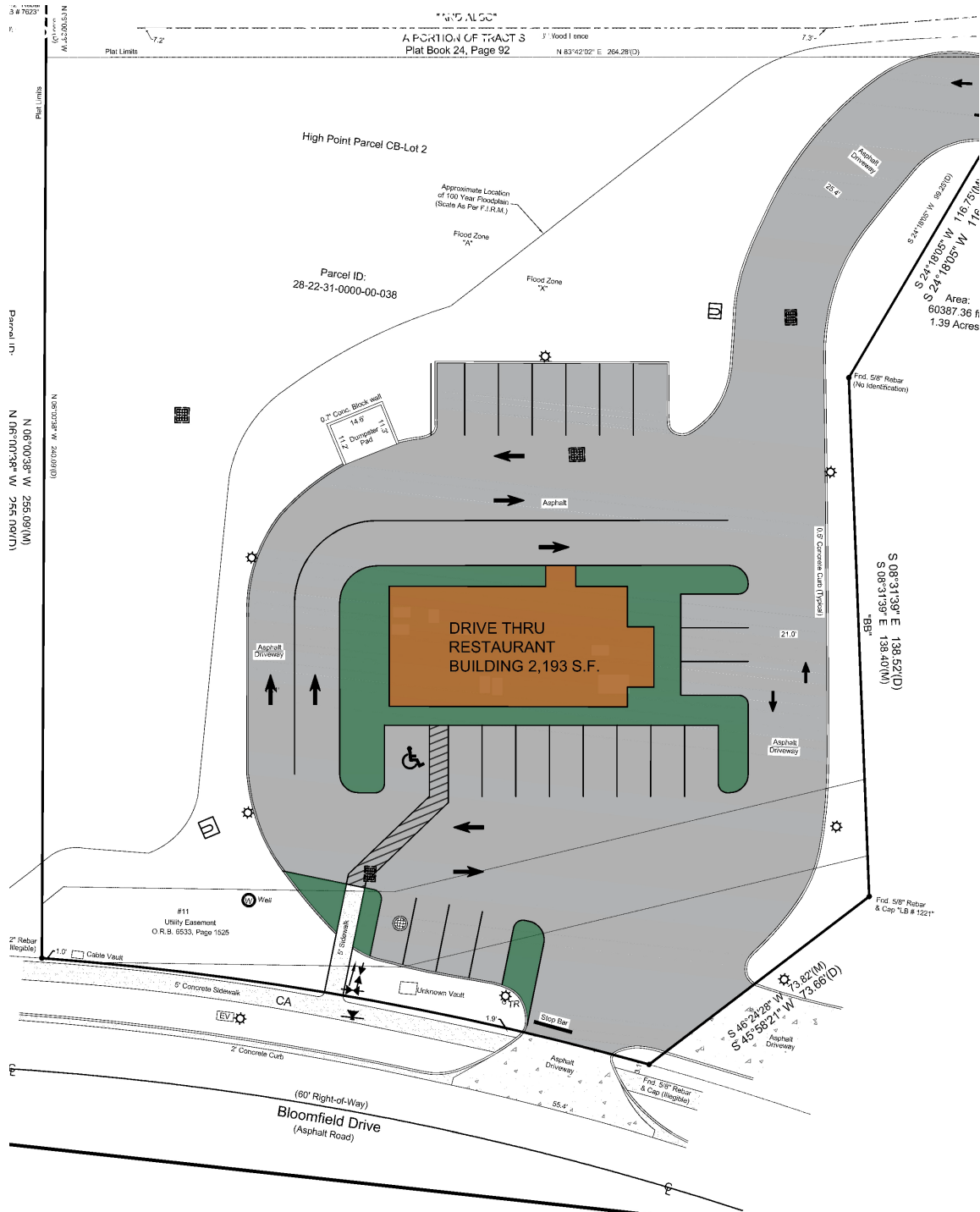
Existing Survey

Site Information:

- 1.38 acres
- Retention pond in place
- Impact Fees Paid for carwash use
- 2,717 square foot existing building
- Access driveways to Bloomfield Drive and connected to Rouse Road thru gas station
- Existing water separator
- Water, sewer and electric utilities in place



2nd Generation Retail Land for Sale



Conceptual Redevelopment Site Plan

- Site is prime for any C-1 use to shadow busy gas station
- Potential coffee, fast-food or automotive uses serving large neighboring community with excellent demographics
- Development cost lower than virgin land sites due to existing infrastructure

Second Generation Land for Sale

11105 Bloomfield Drive, Orlando, Florida

Shadow outparcel site by UCF, State Road 408, and Waterford Lakes



Sale information:

- \$1,500,000 asking sale price

Demographics

	<u>1-MILES</u>	<u>3-MILES</u>	<u>5-MILES</u>
Total Population	18,317	158,919	347,701
Five-Year Increase	3.2%	2.9%	2.1%
Avg Age	35.9	29.7	32.9
Total Households	4,309	19,358	78,749
Daytime Employees	15,590	135,972	291,845