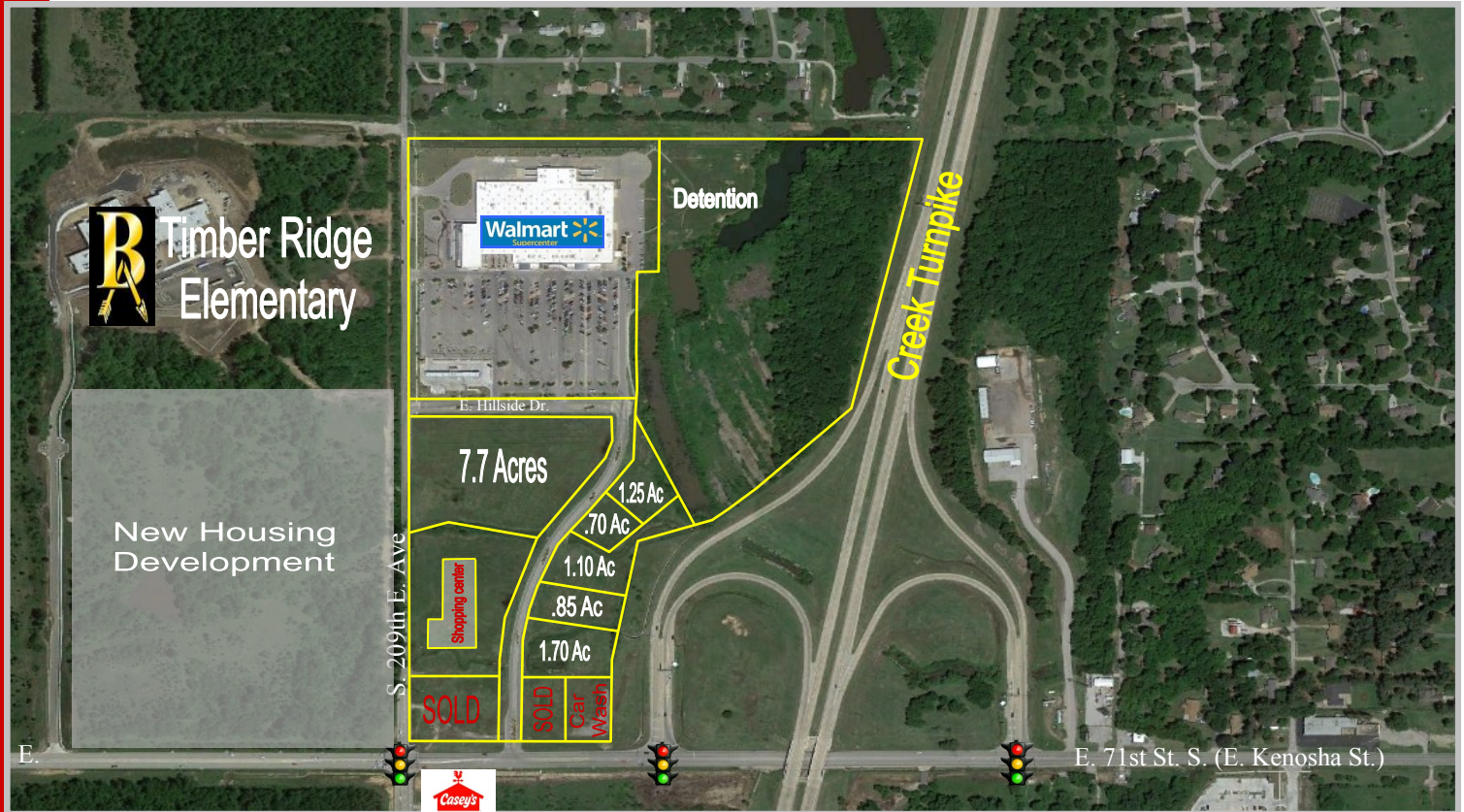


Northeast Crossroads

S. 209th E. Ave. & E. Kenosha St., Broken Arrow, OK

918-481-8888

LAND FOR SALE



MIXED-USE DEVELOPMENT

- Great visibility from Creek Turnpike and Kenosha St.
- Potential to combine lots for larger development tracts
- High growth area for both retail and residential
- Multiple lot sizes available
- Possible sites available for Restaurant, Office, Medical, Hotel etc.

“Broken Arrow is recognized as one of the most affordable, safest and best towns for families by national media outlets.”

DEMOGRAPHICS

MILE RADIUS	3	5
Population:	34,978	93,225
Households:	12,881	33,735
Avg. H.H. Income:	\$79,413	\$81,089
Traffic Counts*:	E. Kenosha St. - 18,662 VPD S. 209th E. Ave. - 8,096 VPD	
	Creek Turnpike - 17,911 VPD	



7060 S. Yale Ave.
Suite 900
Tulsa, OK 74136
Tel: 918.481.8888
Fax: 918.481.8866

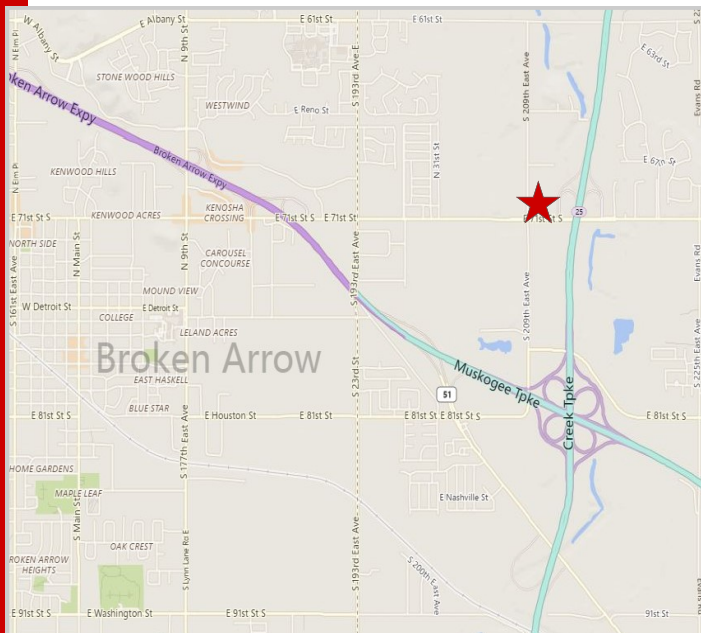
All statements herein are for informational purposes only and are believed to be reliable; however, no warranty or representation is made to the accuracy thereof and the same is submitted subject to errors, omissions, change of price, terms, conditions and prior sale or lease.

Northeast Crossroads

S. 209th E. Ave. & E. Kenosha St., Broken Arrow, OK

918-481-8888

LAND FOR SALE



- Blk 2, Lt 1A - 7.7 Acres
- Blk 3, Lt 3 - 1.70 Acres
- Blk 3, Lt 4 - .85 Acres
- Blk 3, Lt 5 - 1.10 Acres
- Blk 3, Lt 6 - .70 Acres
- Blk 3, Lt 7 - 1.25 Acres

The Broken Arrow Chamber actively works to maintain a high quality of life and create an environment where business innovation, excellence, and entrepreneurship can thrive.



7060 S. Yale Ave.
Suite 900
Tulsa, OK 74136
Tel: 918.481.8888
Fax: 918.481.8866

All statements herein are for informational purposes only and are believed to be reliable; however, no warranty or representation is made to the accuracy thereof and the same is submitted subject to errors, omissions, change of price, terms, conditions and prior sale or lease.